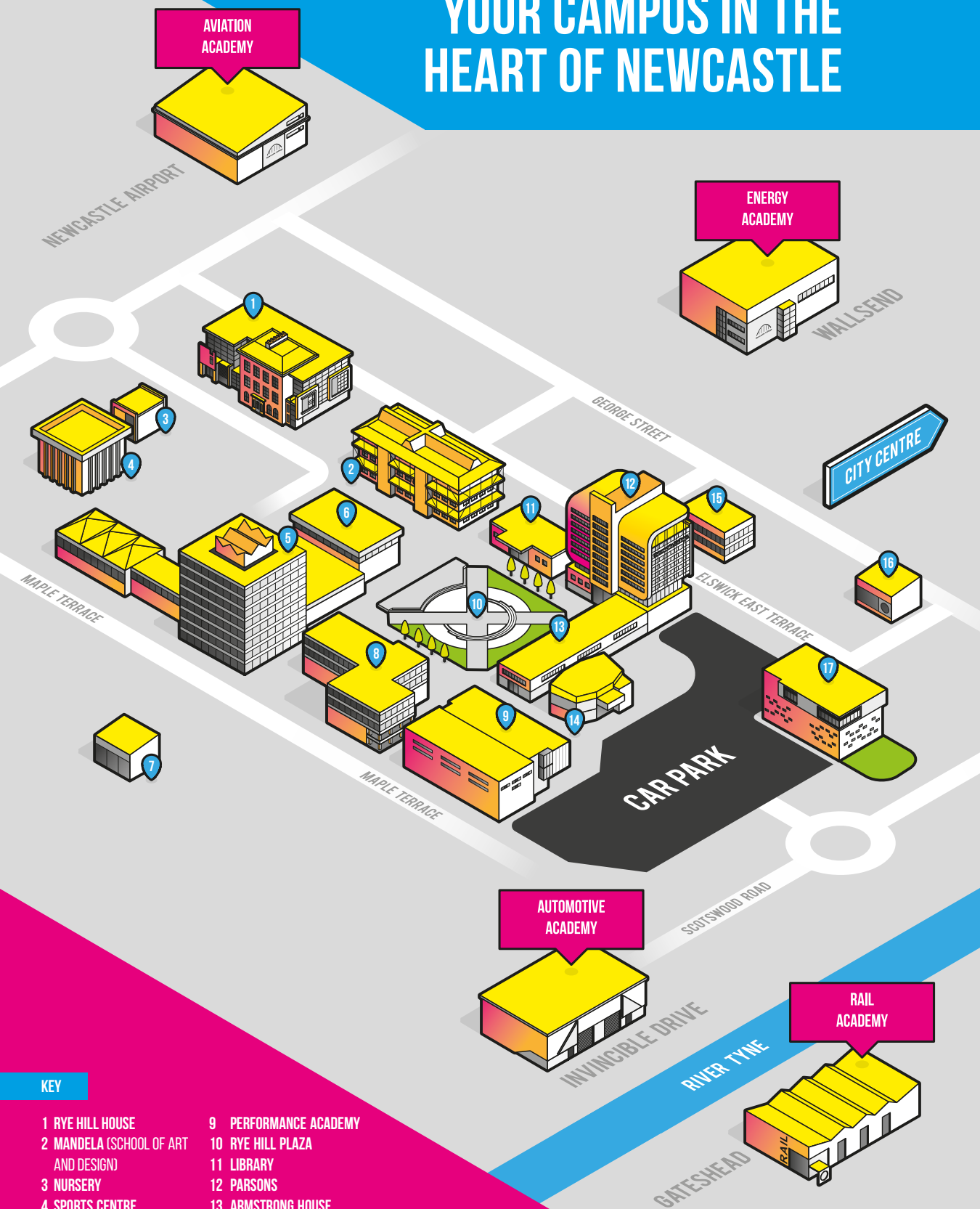


FULL-TIME COURSE GUIDE 2023



YOUR CAMPUS IN THE HEART OF NEWCASTLE



KEY

- | | |
|--------------------------------------|--------------------------------|
| 1 RYE HILL HOUSE | 9 PERFORMANCE ACADEMY |
| 2 MANDELA (SCHOOL OF ART AND DESIGN) | 10 RYE HILL PLAZA |
| 3 NURSERY | 11 LIBRARY |
| 4 SPORTS CENTRE | 12 PARSONS |
| 5 TREVELYAN | 13 ARMSTRONG HOUSE |
| 6 CONSTRUCTION ACADEMY | 14 HE HUB |
| 7 RIVERSIDE DENE | 15 ESTATES |
| 8 RUTHERFORD | 16 TEACHING DEVELOPMENT CENTRE |
| | 17 LIFESTYLE ACADEMY |

EVENTS

Choosing a college is a really important decision, and we know you'll probably have lots of questions before applying to study a course at Newcastle College. We run events throughout the year to help give you as much information as possible about all we have to offer.

Monthly Open Events

Visit one of our Open Events and get a feel for what it's like to study with us! We'll help to find the right course for you!

What happens at an Open Event?

Join us to see our fantastic facilities, meet staff and:

- speak to tutors about the courses you're interested in.
- find out what support services are available to you whilst you study.
- chat to our Student Services Team about financial support you may be eligible for.
- see our campus for yourself
- get support with making an application.

Virtual events

As well as our on-campus events we'll also be running virtual events throughout the year. Look out for details on the events page of our website including how to sign up.

Please note: dates and venue are subject to change, please visit www.ncl-coll.ac.uk/events for full details.

Open Event Dates

WED	OCT 05 4.45PM – 7PM	WED	NOV 02 4.45PM – 7PM
WED	DEC 07 4.45PM – 7PM	WED	JAN 11 4.45PM – 7PM
WED	FEB 01 4.45PM – 7PM	WED	MAR 01 4.45PM – 7PM
WED	MAR 29 4.45PM – 7PM	WED	MAY 03 4.45PM – 7PM
WED	JUN 07 4.45PM – 7PM	WED	JUL 05 4.45PM – 7PM

Principal's welcome



Welcome to Newcastle College.

Thinking about your future can be daunting as you're faced with lots of big decisions, but it's an exciting time too. This next step is your opportunity to really start chasing after your dreams and I hope you choose Newcastle College to help you achieve them.

If you do choose us, you'll become a big part of our diverse and vibrant student community. I am proud to lead a college that is open, welcoming and offers everyone a safe space to be themselves and follow their passion.

As a student here, you'll benefit from hands-on lessons in first-class facilities, learn from tutors with real industry experience and be given lots of opportunities to work with employers and industry experts.

We are all about preparing you for your future here, but we have all faced lots of challenges together over the past few years. That's why your wellbeing will always come first and you'll be supported throughout your studies by a Personal Tutor and an award-winning Student Support Team who is on hand to help you get the best out of your time here.

My advice is to follow your passions and we will help give you the skills and experience you need to succeed. We'll support you to achieve your goals and we'll give you every chance to progress. If you choose to, you could follow in the footsteps of our successful graduates from Newcastle College University Centre, which offers you degree options all the way to Masters Degree.

If you've got any questions or concerns, get in touch with our friendly Student Services Team or join us at an Open Event, where you can meet tutors face-to-face and find the right course for you.

I hope that Newcastle College will be the next step on your journey and that I'll be welcoming you onto campus very soon.

Scott Bullock
Principal, Newcastle College



Student

Principal's welcome	2
Our guide is interactive	4
Being a student at Newcastle College	6
Student life	8
Get the career you want	10
Links to employers	11
Inspirational facilities	12
Help with costs	19
Travel to and from college	20
Student support	22
Student Services	24
Course levels	26
English and maths	27
How to apply	28
Progression opportunities at Newcastle College	30
A degree with a difference	32
Information for parents and guardians	34
T-Levels	36
Courses	
Foundation Learning	50
Apprenticeships	52
Art and Design	54
Automotive	56
Aviation	58
Business	60
Childcare	62
Computing	64
Construction	66
Digital Arts	68
Engineering	70
Hair, Beauty and Make-Up	72
Health and Care	74
Hospitality and Catering	76
Law, Policing and Protective Services	78
Learning Development	80
Music	82
Performing Arts	84
Rail and Civil Engineering	86
Renewable and Subsea Engineering	88
Science	90
Sport	92
Travel and Tourism	94
How to find us	96

OUR GUIDE IS INTERACTIVE

We've introduced some interactive features within this guide to help you get a real insight into what it's like to be a student at Newcastle College and see what you'll get to experience when you study with us.

QR Codes

When you see a QR code simply scan with your phone (most cameras scan QR codes or use a QR code reader) and click the link that appears at the top of your screen. This will display content so you can see for yourself what awaits you at Newcastle College!

Don't have a QR code reader?

You can still access all our videos by visiting the Newcastle College YouTube channel:



[youtube.com/newcastlecollege](https://www.youtube.com/newcastlecollege)

click here

I'll take you to the Newcastle College website!



being a student at Newcastle college

Choose to study with us and we'll do everything we can to make sure you're on course for success. We'll support you throughout your studies to realise your potential and really enjoy the best days of your student life. By studying at Newcastle College, you're taking that next step into independent learning and you'll be treated as an adult. We're here for you and in return, you will also have responsibilities as a Newcastle College student.

Attendance

It's important you turn up to your lessons – after all, you can't learn if you're not here! Missing lessons impacts on your learning and your classmates too. We understand there may be times when you're unwell and when this happens you must report your absence. You'll be given details of how to do this when you enrol.

English and maths

If you're 16 -18 years old and don't quite achieve a grade 4 at GCSE then you'll continue to have lessons in these areas. English and maths are an important part of any career. In order to pass your course you'll need to undertake GCSE resits or Functional Skills qualifications. We'll provide you with everything you need, it's then up to you to work hard and get the grades you need!

Deadlines

Your coursework and projects are really important. They are a key part of your course and how we track your progress and assess your learning. It's important you learn how to manage your time and meet deadlines for your coursework.

Safety first

When you complete your enrolment and are given a lanyard, you're officially a Newcastle College student. This is your ID and every student and staff member is required to wear it at all times. This is to keep everyone on our campus safe.

Be respectful

Our campus is a diverse and welcoming place and it's important that every single one of our students and staff feels safe and comfortable when they're here. That includes you! So we ask that you keep our campus clean and tidy and treat everybody you meet with respect. There is zero tolerance for violence, bullying or threatening behaviour.

student life

students' union

You automatically become a member of Newcastle College Students' Union when you become a student at the College. Once you've enrolled, you can purchase an **NUS TOTUM** card which will give you a variety of **discounts and offers**. The Students' Union (SU) offers advice, campaigns on your behalf and works across the College to ensure you have a fantastic student experience whilst you progress through your studies. They also have a social programme running throughout the year including trips, events, volunteering and opportunities to start and become members of clubs and societies.

click
here



Grab a
glimpse of life
on campus.

Trips and visits

Student awards ceremonies

Exhibitions and theatre shows

Costa Coffee

A range of food outlets



Newcastle College



Travel and Tourism students in Malta, on their placements. These placements include working in the Tourism industry, gaining the skills they need to be successful in the industry and get a real taste of the careers available to them. Plus - they get to live their best life in the 26°C sunshine!



Newcastle College



We are SO incredibly grateful and happy to be able to learn, laugh and have fun in sun together again.



Newcastle College



Forget Navarro Cheer... our Music and Performing Arts students are the new cheerleaders for [@newcastleeagles](https://twitter.com/newcastleeagles)



Newcastle College



Business Level 3 team building day at [@kingswoodcentres](https://twitter.com/kingswoodcentres). There were a lot of laughs, screams, and laughing at screams involved.

Tell us why you're excited to study with us...

Tag us and use our hashtag **#ImInNCL** to be in with a chance of winning prizes



[@newcastlecollege](https://www.instagram.com/newcastlecollege)



[@nclcollege](https://twitter.com/nclcollege)

get the career you want

Our courses are designed to give you every opportunity to pursue your dream career.

This programme is made up of:

Career-focused

Our aim at Newcastle College is to help you develop the skills and knowledge and gain meaningful life experiences to be able to follow your passion into your chosen career.

Throughout your time with us we'll work with you so that you're confident about your career route and we'll give you every opportunity to achieve your aspirations.

What makes up my course?

When you begin studying a full-time course with us you'll be placed on a Programme of Study.



1

Chosen subject

The subject area you've chosen to study.

2

English and maths

You will study this alongside your subject if you don't achieve a grade 4 at GCSE.*

3

Work experience and placements

As a student at Newcastle College, you will have the opportunity to take part in a work placement. Work placements will give you:

- experience of real working environments
- increase your industry knowledge
- build and develop your range of skills
- improve your confidence
- help you to develop essential skills to progress in your future career.

Your placement will also give you an insight into working life in your chosen industry and the expectations of employers.

4

Additional activities

To help you develop as a person and increase your confidence.

* THIS ONLY APPLIES IF YOU ARE 16-18 YEARS OLD.

links to employers

When you study with us you'll benefit from our exceptional links to employers. We work with local, national and international employers, giving you the chance to hear first-hand about the careers and opportunities available to you.

Employers support our courses in a number of ways:

- mock interviews
- guest lectures
- masterclasses
- live projects and briefs
- donating high-quality equipment
- providing real work experience
- sponsoring awards ceremonies
- donating prizes for student work.

Here are some of the employers that support our courses:



inspirational facilities >>>

We've invested in our facilities to give you the best learning experience possible. Our real-working environments allow you to get a taste of what it's like to work in your chosen industry.

See our
subject area
pages for
more info!



Parsons

Our health and care, childcare and science students benefit from this amazing facility with real-working environments to help develop skills whilst they learn.



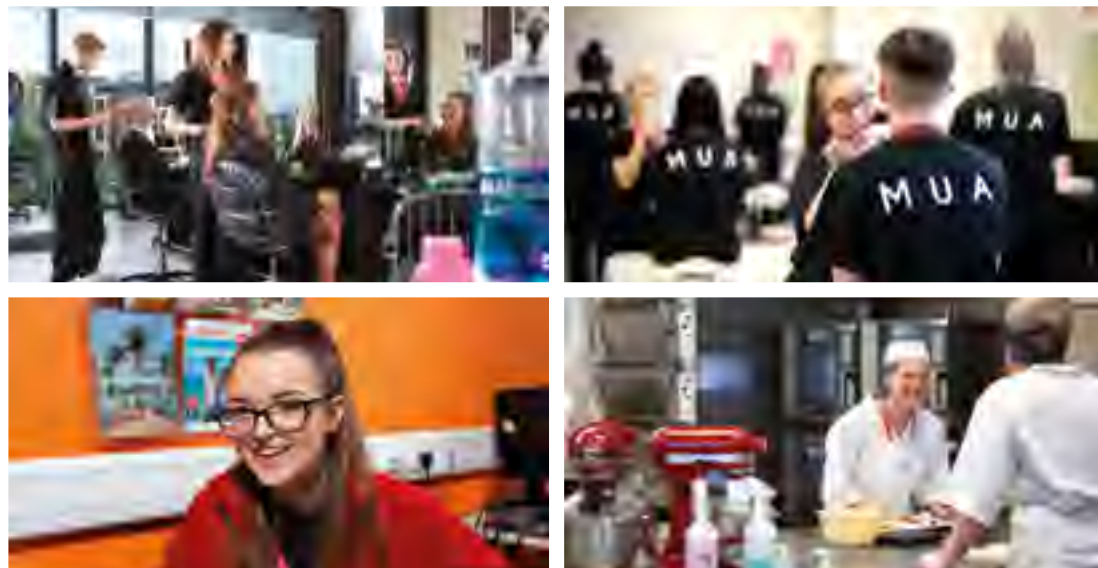
Construction Academy

This is the place to learn bricklaying, plastering, roofing, painting and decorating, carpentry and joinery, plumbing and electrical installation.



Lifestyle Academy

Specialist facilities can be found in our Lifestyle Academy; home to students studying hair, beauty and make-up, travel and hospitality.



Trevelyan

We have dedicated spaces and learning zones for our business, computing, sport and law, policing and protective services students within Trevelyan building.



Rutherford

Rutherford is where our engineering students learn and have access to a range of specialist facilities and industry-standard equipment.



Mandela (School of Art and Design)

Our dedicated Art School is based in Mandela and is our creative hub for art, design and digital arts students to develop their craft.



Performance Academy

This Academy is home to students studying music and performing arts with facilities just like those you'd find in industry.



Aviation Academy

Located just off the runway at Newcastle International Airport, this impressive facility is where our aviation students develop their skills for industry.



Automotive Academy

Our Automotive Academy is a specialist facility, close to our Rye Hill campus, purpose-built for our automotive students to learn skills for their future.



Energy Academy

Based in Wallsend, this facility is a hub for specialist engineers wishing to work in subsea and renewable energy engineering technologies.



Rail and Civil Engineering Academy

Our rail and civil students benefit from this purpose-built academy in Gateshead developed to cater for all aspects of rail and civil engineering.



HELP WITH COSTS

IF YOUR HOUSEHOLD INCOME IS LESS THAN £30,000* YOU MAY QUALIFY FOR:

FREE meals

You may be entitled to a meal on the days that you are timetabled to attend college. This is allocated to your student number and is accessible via the cashless system, making it easy for you to claim your free meal in one of our many food outlets throughout the College.

FREE equipment and trips

As part of your course, you may benefit from equipment and trips to help with your learning.

For some courses there may be associated costs and depending on your circumstances you may be entitled to help towards these.

For full details contact our Student Services Team on 0191 200 4000 or visit www.ncl-coll.ac.uk/financial-support

* SUBJECT TO CERTAIN CRITERIA. TO FIND OUT IF YOU ARE ELIGIBLE, PLEASE SPEAK TO OUR STUDENT SERVICES TEAM.

PLEASE NOTE: FINANCIAL SUPPORT IS BASED ON ACADEMIC YEAR 2022/23 AND IS SUBJECT TO CHANGE FOR 2023/24.



› Travel to and from College

FREE TRAVEL PASS

WORTH UP TO £1,500

If you are eligible, this pass will cover you for the whole academic year. The College works closely with Go North East, Nexus, Stagecoach and Arriva to ensure you benefit from a travel package, which is best suited to your location. To qualify you must meet one of the following criteria:

- | | |
|---|--|
| <p>1 living at home with a household income of under £30,000, subject to certain criteria.</p> | <p>3 receiving Income Support, or Universal Credit because you are financially supporting yourself or financially supporting yourself and someone who is dependent on you and living with you such as a child or partner.</p> |
| <p>2 in care or a care leaver.</p> | <p>4 receiving Disability Living Allowance or Personal Independence Payments in your own right as well as Employment and Support Allowance or Universal Credit in your own right.</p> |

Your route to college

Many of our students do a trial run of their journey to college. Why not try it out to see which route would be best for you?

The nearest station to Newcastle College is Central Station. Here you can catch a bus, Metro or train.

Central Station is a short walk to the College, just head to the Life Science Centre, cut through Times Square, pass the National Express Coach Station, cross the road and head straight on. This is a well-lit area and lots of our students and staff walk this way to and from the College.

If you're unsure how you would get to college, check out Traveline's journey planner by visiting:

traveline.info

More information on how to find us can be found on page 96.

scan me

How to get to college from Central Station.



student support

When you study with us you can access a range of support to help you succeed. Our award-winning Central Support Service (CSS) is here to provide advice and support to all students.

Learning Support

Our support services are here to offer you disability specific advice, guidance and signposting when you need it. We are committed to putting reasonable adjustments in place to remove barriers to learning and to ensure you have full access to your chosen curriculum. The team can provide a range of support including Communication Support Workers, Learning Support Assistants, help with personal care, access plans and much more.

Assistive Technology

The Assistive Technology Team can provide you with equipment, software and training should you have any additional support needs. The team is also home to the Transcription Service which can provide you with expert conversion of course materials, exam papers and other documents into a variety of different formats such as Braille, large print and audio.

Pastoral Support

The Pastoral Support Team will have contact with you at some point during your time at college. We aim to develop and maintain mentoring relationships which contribute to your emotional and physical wellbeing. The team work with you in a number of ways including providing drop-in sessions, group work, one-to-one support and cover areas such as health and wellbeing, employability skills, academic study skills, personal safety and literacy and numeracy.

Library and Learning Spaces

The Library and Learning Spaces Team aim to promote independent learning and provide a productive and vibrant environment for you to work, study and research in. The team supports the main library and independent learning spaces around campus, where we are on hand to offer you individual help with research, study, referencing and access to thousands of resources.

Mental Health and Wellbeing

We all have worries and anxieties and sometimes these can increase and become more frequent than usual. Good mental health and wellbeing is important to Newcastle College. That's why we have Youth Mental Health First Aiders and other staff to support our learners.

We are also partnered with the Fika Mental Fitness app, which is free for all of our students to access. On the app you can complete short mental fitness exercises that can improve your confidence, motivation and focus.

Our aim is to ensure we support and respond to your mental health, emotional and social needs whilst you are studying your course with us. We will work with you to put the most appropriate support together and ensure reasonable adjustments are available and in place whilst you are at college.

GET IN TOUCH

Talk to our Central Support Service Team on

0191 200 4189

or email

css@ncl-coll.ac.uk

to discuss your support needs
and how we can help.

student services

Starting your new journey at college can be a big step, but we're here to help you along the way. Whether you need support with travel costs or want to find out which course is right for you, our Student Services Team is here for you.

Our centre is open Monday, Tuesday and Thursday 8.30am to 4.30pm and Wednesday and Friday 9.30am to 4.30pm.

Course information and advice

If you are looking for course information, impartial advice and guidance on your career choice and next steps, you can drop-in or make a one-to-one appointment with our team. We work with each individual to develop a unique learner journey to help you reach your full potential.

Careers advice

We are able to offer career advice, helping you make the right choice when choosing a course at Newcastle College. For further careers advice, we can refer you to either the National Careers Service (for those aged 19 and over) or Connexions (for those under 19).

Finance information and advice

This includes:

- childcare, travel and accommodation costs.
- assessments for college support funds and bursaries.
- higher education financial support, course fees (if applicable), study costs and college financial support (such as college meal entitlement or travel costs and bursaries).
- signposting you to agencies who can support with benefit advice and debt management.
- student finance applications and queries.

Wellbeing

We have an excellent college Central Support Team who we can refer you to. Our team offers a wide range of services including learning support, mentoring support, advice on sexual health and counselling.

Contact our team

Email: enquiries@ncl-coll.ac.uk

Phone: 0191 200 4000

We are **option 4** on switch board when calling.



COURSE LEVELS

It can be hard to know which course and what level to start on. We have a course for everyone, regardless of your current grades, ability or ambitions. Once you have made an application to study with us, we'll review your application and work with you to ensure you start on a course that is best suited to you. Once you successfully complete that course you can progress onto the next level with us.

Full-time courses

The courses within this guide are studied full-time, requiring you to be in college most days. You'll focus on one core subject, and English and maths if relevant, learn in a hands-on way and be assessed in different ways. See **page 10** for what makes up your programme of study.

Apprenticeships

Why not consider an apprenticeship? With an apprenticeship you'll be in full-time employment which you'll combine with off-the-job training either in college or in the workplace. Check out **page 52** for further information.

Which level should I choose?

The level you'll study at usually depends on the grades that you achieve at GCSE. If you don't get the grades you'd hoped for, there's no need to worry. No matter what level you start at, if you successfully complete your course you can then progress to the next level.

★ When you apply please provide us with your predicted GCSE grades.

Level you'll typically begin studying at	Number of GCSEs required to study	Still unsure which level is right for you?
Level 3	5 GCSEs at grade 4 or above (to typically include English and maths)	If you are still unsure which level to apply for come along to one of our Open Events to speak to our tutors or student advisors.
Level 1 or 2	4 GCSEs at grade 3 or below	Alternatively, call Student Services on 0191 200 4000

PLEASE NOTE THAT SOME COURSES MAY REQUIRE GCSE GRADES IN SPECIFIC SUBJECT AREAS E.G. MATHS, ENGLISH AND SCIENCE, WHILE OTHERS WILL REQUIRE YOU TO START AT LEVEL 1 TO LEARN THE TECHNICAL CRAFT OF YOUR CHOSEN SUBJECT.

Course levels within this guide are indicated as follows:

L1 → **LEVEL 1**

L2 → **LEVEL 2**

L3 → **LEVEL 3**

DID YOU KNOW?

When you successfully complete your Level 3 course with us in a relevant subject, you'll be automatically offered a place at Newcastle College University Centre on one of our degree courses!

The importance of English + maths

Good levels of English and maths at grade 4 GCSE or higher are essential for all job roles. At Newcastle College we place English and maths development at the heart of your Programme of Study and highlight the relevance of these throughout your time on the course. You will continue to develop these skills so you are confident and competent in achieving the required level to progress.

If you don't already have a grade 4 or above in these subjects, your timetable will include English and maths lessons and you must attend these in order for you to successfully complete your course.

All job roles use English and maths skills:

- ★ Car mechanics need to provide quotes and raise invoices.
- ★ Hairdressers need to be able to calculate prices and order stock.
- ★ Chefs need to be able to measure out ingredients and price up menus.
- ★ All workers need to be able to communicate effectively both verbally and in writing.

how to apply

Once you have an idea of what you'd like to study we recommend you make your application as soon as possible to secure your place. We'll then send you all the information you need about the course and all the exciting things you can look forward to when studying with us. This will help you prepare for when you start your course with us.

1 Discover your options

- Visit ncl-coll.ac.uk
- Visit an Open Event (held monthly)
- Contact us on our social media (Facebook, Twitter or Instagram)
- Call us on **0191 200 4000**
- Email enquiries@ncl-coll.ac.uk

2 Make your application

You can search for your course and apply online via our website; it only takes around ten minutes to complete.

3 With you every step of the way

Once you've made your application we will be in touch to keep you updated with your application, as well as news, competitions and things you can look forward to.

Looking for advice?

- Join an **Open Event** to speak directly to tutors and get course information.
- Speak to our Student Services Team on **0191 200 4000**. We are **option 4** on switch board when calling.
- Email us at enquiries@ncl-coll.ac.uk for any career advice you need.

Ready to apply?

If you need help completing the online application form, our Student Services Team are on hand to provide support. You can come along to our centre or attend a Newcastle College Open Event held every month at our Rye Hill campus.

It is important you provide as much information as possible on your application, especially with your current and predicted grades. This is to help us direct you to the right course for you.

If you need support making an application from home contact our Student Services Team at enquiries@ncl-coll.ac.uk or call **0191 200 4000**.

Once you have made an application

Our Student Services Team will process your application responsibly and efficiently, keeping you informed along the way. We will contact you via email (this includes if we need to contact you about any missing information), so please ensure you use a personal, current and valid email address. If you are currently at school, please do not use a school email address as this may become unavailable when you leave. Don't forget to check your inbox for updates on the progress of your application.

PROGRESSION OPPORTUNITIES

AT NEWCASTLE COLLEGE UNIVERSITY CENTRE

Your journey with us does not have to end after you complete your studies. We guarantee a place at Newcastle College University Centre when you successfully complete your Level 3 course.

As a further education student, you might not be thinking about moving to the next step just yet. However, it is always good to know what your future could bring and, with Newcastle College, we can help you take that next step into higher education.

Many of our students choose to Step Up to a degree at Newcastle College University Centre. Once they successfully complete their Level 3 course, they choose to progress their studies to gain enhanced skills and knowledge before they pursue their chosen career.

We have over 60 degree courses to choose from with excellent student support and industry-standard facilities.

You can find out more about Steppin' Up at Newcastle College at www.ncl-coll.ac.uk/apply-now/steppin-up



NEWCASTLE
COLLEGE
UNIVERSITY
CENTRE

STEPPIN' UP

“ PHILLIP'S STORY

Phillip progressed from a Level 3 hospitality course to a Foundation Degree in Culinary Arts.

“Studying my degree at Newcastle College University Centre means I've got great qualifications to back up the skills I've developed, the knowledge I've gained and the experiences I've had along the way, as well as having a top-notch CV for when I start applying for jobs.”



Take a sneak peek into student life at our University Centre.



A DEGREE WITH A DIFFERENCE

You might not be thinking about your future just yet, but at Newcastle College you don't have to finish your studies when your Level 3 course is over. You can stay at our University Centre to study a degree!

Investing in You

Newcastle College University Centre has been awarded over £2million from the Office for Students (OfS) to spend on bringing our students the latest equipment, to support them in their learning and prepare them for entering the workplace.

Students in aviation, digital, energy and engineering will benefit from leading-edge teaching facilities from new electric vehicles, wind turbine nacelles, drones, robots, VR and XR software and even a new jet. Investing in fantastic facilities is really important to us. We are committed to making sure our students graduate with industry-experience, be it through our links to employers, learning with the very best equipment or from our industry-standard tutors.

Our University Centre offers you a real alternative to university where you can study university-level degree courses that have been designed in collaboration with employers. You'll be taught in smaller class sizes in specialist teaching facilities, and have opportunities to work with employers to develop your professional skills.

What can I study?

We offer degrees in most of the subject areas in which you can study a Level 3 course. From art and design to business, computing, engineering and sport, our degrees will take you to that next level. You'll get to study in fantastic facilities and learn from our industry-experienced tutors.

What types of degrees are on offer?

You can study a CertHE (Level 4), Foundation Degree (Level 5), Honours Degree and Honours Degree (Top-Up) (Level 6) at Newcastle College University Centre. We offer Degree Apprenticeships too!

Facilities just for you

When you study a degree at the University Centre you'll get to access the exclusive facilities that are just for our higher education students! This includes the HE Hub which has a bar serving hot food and drinks, as well as having plenty of social space for hanging out with friends or tackling that group project.

You'll also get to use Parsons floor 10 where you will find your own break-out area and computer suite with the latest specialist software. Relax, unwind and take in the stunning views across Newcastle!

Student Life

At Newcastle College University Centre, we think it is really important that our degree students get to experience all aspects of student life. There are plenty of ways for you to get involved in activities on campus when you study a degree!

Students' Union

When you enrol onto a degree course at Newcastle College University Centre, you automatically become a member of Newcastle College University Centre Students' Union, an affiliated member of the National Union of Students (NUS). You can apply for an NUS Totum card entitling you to a number of fantastic discounts in shops, restaurants and services nationwide.

The Students' Union has a range of officer roles available to you as a student. These officers help with the running of the Students' Union as a fair and exciting organisation and represent you around LGBT+ issues, disabilities, higher education and welfare.

Student Leaders

Our Student Leaders Programme gives our degree students the opportunity to undertake research or similar activities within your discipline and across the University Centre. It also means you are able to make a positive impact on the student experience and contribute to the student community, all whilst gaining valuable employability skills and often a generous bursary.

Support for degree students

Fika

We have partnered with mental fitness app Fika, which is a tool you can use to stay motivated, productive, focused and connected as a student. This free app is available for all students at Newcastle College University Centre.

Learning Mentors

Our Learning Mentors can provide you with one-to-one support for your mental health and wellbeing and can also signpost you to other services like counselling. We pride ourselves on providing our students with exceptional support throughout their studies.

Higher Education Disability Support Team (DST)

Our Higher Education Disability Support Team (DST) provides support, advice and guidance for students with a wide range of learning needs. We want to make sure you have the best possible experience whilst you're a student with us, and DST is here to help.



INFORMATION FOR PARENTS AND GUARDIANS

If your child, or someone you care for, is considering their next steps with Newcastle College, you can rest assured that we're the right choice. Our priority is helping every one of our students to aim high, achieve their goals and progress beyond them.



A Levels and vocational study – what's the difference?

College programmes (including BTECs and T-Levels) are broadly equivalent to A Levels, it's just a different route. They focus more on hands-on and practical skills rather than written assessments, which can be really beneficial when it comes to gaining experience and finding employment. They also train students up in specialist areas, so they can focus on the area that really interests them. In fact, the government are keen to develop even more vocational courses, recognising the benefits of hands-on learning. They are still awarded UCAS points, so students can still progress to university if they succeed on their course.

If you are interested in studying A Levels, Newcastle Sixth Form College is a dedicated A Level provider situated within our Rye Hill campus. Visit www.newcastlesixthformcollege.ac.uk to learn more.

Any questions?

Join an Open Event to speak to tutors, get course information and see what the campus has to offer.

The College's first-class facilities, experienced tutors and relationships with employers across the region are at the core of everything we do. They are the foundation for providing the right support and skills for our students to excel. Our campus in the heart of the city is open and welcoming and provides a brilliant student experience. We're delighted that we could be the next step in your young person's journey, and we think that as a parent, guardian or carer, you're a big part of this, so you'll be with us every step of the way.

Your involvement

Coming to college is an exciting step into the real world. A new campus, a new course and new friends. We like to think we help all of our students gain their independence while they're with us. We expect them to turn up, be on time, work hard and strive to be their best every day.

We also know that you share our goals of wanting our students to succeed. We promise to keep you informed and up-to-date on progress and concerns, but we trust our students to do the work to obtain their goals.

Keeping track of progress

All of our students are assigned a Personal Tutor, who will help them to develop individual targets and progression plans. We encourage our students to take responsibility for their own success and to focus on progressing to the next step. We'll support them in any way we can and they'll meet regularly with their Personal Tutor to help keep them on track.

You can support them too. You'll have access to the online Student Progress Tracker, as well as direct contact with Personal Tutors if you want to discuss any concerns.



T-LEVELS

NEWCASTLE COLLEGE NOW OFFERS NEW AND EXCITING T-LEVEL QUALIFICATIONS* IN CONSTRUCTION, DIGITAL, EDUCATION, CHILDCARE, HEALTH AND SCIENCE. YOU CAN APPLY NOW TO STUDY A T-LEVEL WITH US IN SEPTEMBER 2023.

What are T-Levels?

T-Levels are two-year courses that combine college learning with a work placement. These qualifications are for students who have just completed GCSEs and want to develop the knowledge and skills that will help them go straight into employment, an apprenticeship or higher education.

T-Levels are the equivalent to three A Levels and you'll spend 80% of your time in college and 20% on a 45-day placement with an employer.

What are the benefits of T-Levels?

- **Created with businesses**
More than 250 businesses have helped design T-Levels meaning they give you the skills that employers are really looking for.

• Combine work and study

You spend most of your time learning in college, but the other 20% you'll spend on work placement with an employer, where you will gain real work experience.

• Progression opportunities

Whether you want to go into higher education, an apprenticeship or straight into work, a T-Level will give you a nationally recognised qualification to help you do just that.

• UCAS points

T-Levels are worth UCAS points and a T-Level Distinction* is worth the same as 3 A levels at A*.

How are T-Levels different to A Levels, apprenticeships or other courses I can study at college?

T-Levels are vocational courses. This means they focus on teaching you the practical skills and knowledge you'll need for your future career.

A Levels focus on theory and you spend all of your time in the classroom, studying three or four subjects of your choice.

T-Levels focus on the practical side of learning, so you'll spend 80% of your time in the classroom learning both theory and hands-on skills, and the remaining 20% of your time you'll spend gaining work experience with a real employer putting those skills into practice.



With a T-Level, you study one subject with different pathways, in order to gain in depth knowledge and skills in your chosen area.

This is different from an **apprenticeship**, where the focus is more on workplace training. On an apprenticeship, you spend 80% of your time in a real, full-time job, with 20% of the time spent in a classroom being supported.

We offer a wide range of other **vocational courses** across our different subject areas, and all of them are designed to give you the hands-on skills you need. They differ to T-Levels in the amount of time you spend with an employer.

One T-Level is equivalent to three A Levels, just like many of our other vocational courses are. Whether you choose an A Level,

a T-Level or another Level 3 vocational course, you'll still be awarded UCAS points which you will need if you wish to progress to degree level study.

Entry Requirements

Entry requirements will differ depending on the T-Level you choose. Please visit our T-Levels webpage at www.ncl-coll.ac.uk/tlevels for more information on our courses and specific entry requirements. Students may also need to participate in an assessment to ensure suitability ahead of enrolment.

For further information on T-Levels, please visit tlevels.gov.uk

** T-Level courses are currently pending approval and Newcastle College will take all reasonable steps to provide the courses as described in this guide. In the event that we are unable to deliver specific T-Level pathways, we will communicate to applicants and work to find alternative and suitable programmes.*

CONSTRUCTION: BUILDING SERVICES ENGINEERING

ELECTROTECHNICAL ENGINEERING – LEVEL 3* LENGTH: 2 YEARS

**Qualification gained: City & Guilds Level 3
T-Level in Construction: Building Services
Engineering – Electrotechnical Engineering**

On this two-year course you'll spend most of your time in college learning the theoretical and practical skills you will need, studying a range of topics from health and safety to the principles of construction design and sustainability to systems and components. You will complete the course with the ability to install, maintain and decommission electrotechnical systems, along with a solid understanding of the industry.

You will be taught by tutors who have years of experience working in the industry and undertake an industry placement with an employer for a minimum of 45 days throughout your course, giving you the chance to put your new skills into practice and be prepared to thrive in the workplace.

- Construction commercial/business principles
- Building services
- Engineering systems
- Maintenance principles
- Tools equipment and materials.

You will also take the following specialist units:

- Electrotechnical engineering
- Install electrotechnical systems
- Commission electrotechnical systems
- Maintain electrotechnical systems
- De-commission electrotechnical systems.



WORK EXPERIENCE OPPORTUNITIES

Work experience is an important part of your T-Level. You will undertake a substantial industry placement with an employer for a minimum of 45 days during your course to help you prepare for your next steps. You will also undertake an employer-set project as part of the course.

For more information on this course including entry requirements, occupational specialism modules and progression opportunities, head to www.ncl-coll.ac.uk/tlevels

T-LEVELS
THE NEXT LEVEL QUALIFICATION



*subject to approval



DIGITAL BUSINESS SERVICES

DATA TECHNICIAN – LEVEL 3* LENGTH: 2 YEARS

**Qualification gained: NFCE Level 3 T-Level
Qualification in Digital Business Services –
Data Technician**

As a student on this two-year full-time course you will gain all the skills you need to be a Data Technician, learning in our fantastic facilities alongside our industry-experienced tutors. During this exciting new course, you will study a range of topics and focus on areas such as digital analysis, planning, legislation and security. You will also take specialisms in interpreting data and legal, ethical and professional principles.

You will undertake an employer industry placement for a minimum of 45 days throughout your course, giving you the opportunity to put your new skills into practice and thrive in the workplace.



WORK EXPERIENCE OPPORTUNITIES

Work experience and industry placements are an important part of your T-Level. Students must complete a minimum of 45 days of work experience to achieve their overall grade for their T-Level programme.

For more information on this course including entry requirements, occupational specialism modules and progression opportunities, head to www.ncl-coll.ac.uk/tlevels

T-LEVELS
THE NEXT LEVEL QUALIFICATION



WHAT WILL I LEARN?

You will study the following core modules:

- Business context
- Culture
- Data
- Digital analysis
- Digital environments
- Diversity and inclusion
- Learning
- Legislation
- Planning
- Security
- Testing
- Tools.

You will also complete an occupational specialism component (Data Technician).

*subject to approval

DIGITAL PRODUCTION, DESIGN AND DEVELOPMENT

DIGITAL PRODUCTION, DESIGN AND DEVELOPMENT – LEVEL 3* LENGTH: 2 YEARS

**Qualification gained: Pearson Level 3 T-Level
Qualification in Digital Production, Design
and Development**

This two-year full-time T-Level course will provide you with all the skills and industry-experience you need to kick-start your career. Learning from industry-experienced tutors whilst gaining invaluable experience through a work placement, you will learn digital skills such as programming and emerging issues and impact of digital as well as legislation and regulatory requirements and security.

You will undertake an employer industry placement for a minimum of 45 days throughout your course, giving you the opportunity to put your new skills into practice and thrive in the workplace.



WORK EXPERIENCE OPPORTUNITIES

Work experience and industry placements are an important part of your T-Level. Students must complete a minimum of 45 days of work experience to achieve their overall grade for their T-Level programme.

For more information on this course including entry requirements, occupational specialism modules and progression opportunities, head to www.ncl-coll.ac.uk/tlevels

T-LEVELS
THE NEXT LEVEL QUALIFICATION



WHAT WILL I LEARN?

You will study the following core modules:

- Problem solving
- Introduction to programming
- Emerging issues and impact of digital
- Legislation and regulatory requirements
- Business context
- Data
- Digital environments
- Security.

You will also complete an occupational specialism component (Digital Production, Design and Development).

*subject to approval

DIGITAL SUPPORT SERVICES

DIGITAL INFRASTRUCTURE – LEVEL 3* LENGTH: 2 YEARS

Qualification gained: NFCE Level 3 T-Level in Digital Support Services – Digital Infrastructure

Are you excited by the digital sector and want to develop the skills and knowledge you need to succeed? Do you want to specialise in digital infrastructure and learn how to install, test and manage both physical and virtual infrastructure? If so, this Digital Infrastructure T-Level, which has been designed in collaboration with employers, could be the course for you.

As part of this course you will study topics such as data, digital environments and security and learn how to apply procedures and controls to maintain the digital security of an organisation and its data. You'll develop key skills such as problem solving and decision making, communication and teamwork to help prepare you for your next step. What's more, you'll undertake an industry placement for a minimum of 45 days with an employer to help put what you've learnt on your course into practice.

- Planning
- Security
- Testing
- Tools
- Careers within the digital support services sector
- Communication in digital support services
- Fault analysis and problem resolution.

You will also complete an occupational specialism component (Digital Infrastructure).



WORK EXPERIENCE OPPORTUNITIES

Work experience is an important part of your T-Level. You will undertake a substantial industry placement with an employer for a minimum of 45 days during your course to help you prepare for your next steps. You will also undertake an employer-set project as part of the course.

For more information on this course including entry requirements, occupational specialism modules and progression opportunities, head to www.ncl-coll.ac.uk/tlevels

T-LEVELS
THE NEXT LEVEL QUALIFICATION



*subject to approval

DIGITAL SUPPORT SERVICES

DIGITAL SUPPORT – LEVEL 3* LENGTH: 2 YEARS

Qualification gained: NFCE Level 3 T-Level in Digital Support Services – Digital Support

Are you passionate about the digital sector and want to work in this fast-paced and ever-developing industry? Do you want to learn more about how to install, set up and support software applications and operating systems? Are you interested in learning how to maintain the digital security of an organisation and its data? This exciting Digital Support T-Level, which has been designed in collaboration with employers, could be just what you are looking for to take the next step in your career.

As part of this course you'll study topics such as digital analysis, data and planning, as well as legislation and security. You'll develop your technical knowledge and skills such as communication, problem solving and your ability to work independently and as a team. An industry placement for a minimum of 45 days with an employer will help you apply the theory to a real-work environment.

- Planning
- Security
- Testing
- Tools
- Careers within the digital support services sector
- Communication in digital support services
- Fault analysis and problem resolution.

You will also complete an occupational specialism component (Digital Support).



WORK EXPERIENCE OPPORTUNITIES

Work experience is an important part of your T-Level. You will undertake a substantial industry placement with an employer for a minimum of 45 days during your course to help you prepare for your next steps. You will also undertake an employer-set project as part of the course.

For more information on this course including entry requirements, occupational specialism modules and progression opportunities, head to www.ncl-coll.ac.uk/tlevels

T-LEVELS
THE NEXT LEVEL QUALIFICATION



*subject to approval

EDUCATION AND CHILDCARE

EARLY YEARS EDUCATOR – LEVEL 3* LENGTH: 2 YEARS

Qualification gained: NCFE Level 3 T-Level in Education and Childcare – Early Years Educator

During your studies you will build your experience in the childcare and early years sector, developing specialist knowledge and skills as you go. You will learn theory and best practice from industry-experienced tutors in our specialist on-campus childcare facilities which simulate conditions within a working nursery.

You will study a range of vital topics, including behaviour, child development and special educational needs and disabilities. You will complete the course with the knowledge and practical skills you need to build an exciting career in education and childcare.

As part of the Early Years Educator T-Level, you will spend a minimum of 750 hours on an employer placement in a childcare setting, helping you to develop your specialist skills and experience. The time you dedicate to this placement will help you put your skills into practice in a real educational setting.

- Working with others
- Child development
- Observation and assessment
- Reflective practice
- Equality and diversity
- Special educational needs and disability
- English as an additional language.

You will also complete an occupational specialism component (Early Years Educator).



WORK EXPERIENCE OPPORTUNITIES

Work experience is an important part of your T-Level. You will undertake a substantial work placement with an employer for a minimum of 750 hours during your course to help you prepare for your next steps. You will also undertake an employer-set project as part of the course.

For more information on this course including entry requirements, occupational specialism modules and progression opportunities, head to www.ncl-coll.ac.uk/tlevels

T-LEVELS
THE NEXT LEVEL QUALIFICATION



*subject to approval



HEALTH

SUPPORTING THE ADULT NURSING TEAM – LEVEL 3* LENGTH: 2 YEARS

Qualification gained: NCFE Level 3 T-Level Qualification in Health – Supporting the Adult Nursing Team

On this two-year course you will benefit from learning in our industry-standard facilities that replicate real hospital wards and health suites. Learning from industry-experienced tutors you will study a range of important topics such as health and safety regulations, scientific and clinical practice, and infection prevention, as well as theoretical studies of biology, chemistry and physics. You will complete the course with the scientific knowledge and practical experience you need to make a real difference as an important contributor to the adult health industry.

You will also undertake an employer industry placement for a minimum of 45 days throughout your course, giving you the opportunity to put your new skills into practice and thrive in the workplace.

- Providing person-centred care
- Health and wellbeing
- Infection prevention and control in health specific settings
- Safeguarding
- Core science concepts
- Further science concepts.

You will also complete an occupational specialism component (Supporting the Adult Nursing Team).



WORK EXPERIENCE OPPORTUNITIES

Work experience is an important part of your T-Level. You will undertake a substantial industry placement with an employer for a minimum of 45 days during your course to help you prepare for your next steps. You will also undertake an employer-set project as part of the course.

For more information on this course including entry requirements, occupational specialism modules and progression opportunities, head to www.ncl-coll.ac.uk/tlevels

T-LEVELS
THE NEXT LEVEL QUALIFICATION



*subject to approval

HEALTH

SUPPORTING THE MENTAL HEALTH TEAM – LEVEL 3* LENGTH: 2 YEARS

Qualification gained: NCFE Level 3 T-Level in Health – Supporting the Mental Health Team

As a Health student, you will benefit from learning in industry-standard facilities that replicate a real healthcare setting and will learn from tutors with years of experience within the sector.

You will study a range of important topics including health and safety regulations, scientific and clinical practice, and infection prevention, as well as theoretical studies of biology, chemistry and physics. You will complete the course with the scientific knowledge and practical experience you need to play a variety of vital supporting roles in the health industry.

You will also undertake an employer industry placement for a minimum of 45 days throughout your course, giving you the opportunity to put your new skills into practice and thrive in the workplace.

- Providing person-centred care
- Health and wellbeing
- Infection prevention and control in health specific settings
- Safeguarding
- Core science concepts
- Further science concepts.

You will also complete an occupational specialism component (Supporting the Mental Health Team).



WORK EXPERIENCE OPPORTUNITIES

Work experience is an important part of your T-Level. You will undertake a substantial industry placement with an employer for a minimum of 45 days during your course to help you prepare for your next steps. You will also undertake an employer-set project as part of the course.

For more information on this course including entry requirements, occupational specialism modules and progression opportunities, head to www.ncl-coll.ac.uk/tlevels

T-LEVELS
THE NEXT LEVEL QUALIFICATION



*subject to approval

HEALTHCARE SCIENCE

ASSISTING WITH HEALTHCARE SCIENCE – LEVEL 3* LENGTH: 2 YEARS

**Qualification gained: NCFE Level 3 T-Level
in Healthcare Science – Assisting with
Healthcare Science**

As a student on the T-Level in Assisting with Healthcare Science you will build your knowledge in areas including principles of person-centred care, infection prevention and good scientific and clinical practice, alongside theoretical studies of biology, chemistry and physics.

Learning in our industry-standard facilities from tutors with real experience, you will complete the course with the scientific knowledge and practical experience to pursue a variety of roles in the healthcare science industry.

You will also undertake an employer industry placement for a minimum of 45 days throughout your course, allowing you to gain hands-on experience and put what you've learned into practice.

- Managing information and data within the health and science sector
- Managing information and data
- Good scientific and clinical practice
- Good scientific practice
- Core science concepts
- Further science concepts.

You will also complete an occupational specialism component (Assisting with Healthcare Science).



WORK EXPERIENCE OPPORTUNITIES

Work experience is an important part of your T-Level. You will undertake a substantial industry placement with an employer for a minimum of 45 days during your course to help you prepare for your next steps. You will also undertake an employer-set project as part of the course.

For more information on this course including entry requirements, occupational specialism modules and progression opportunities, head to www.ncl-coll.ac.uk/tlevels

T-LEVELS
THE NEXT LEVEL QUALIFICATION



*subject to approval

SCIENCE

LABORATORY SCIENCES – LEVEL 3* LENGTH: 2 YEARS

**Qualification gained: NCFE Level 3 T-Level
in Science – Laboratory Sciences**

Science is one of the most exciting industries around. If you're looking to start a career in laboratory sciences, build your skills and gain real-world experience, all whilst learning from our industry-experienced tutors, this T-Level could be for you.

You will learn in our fantastic facilities, while exploring topics such as regulations in the health and science sector, data handling and scientific ethics, alongside theoretical studies of biology, chemistry and physics. You will complete the course with the scientific knowledge and practical experience to kick-start your career in industry in a laboratory setting.

You will also undertake an employer industry placement for a minimum of 45 days throughout your course, giving you the chance to put your new skills into practice and be able to thrive in the workplace.

- Data handling and processing
- Ethics
- Good scientific and clinical practice
- Scientific methodology
- Experimental equipment and techniques
- Core science concepts
- Further science concepts.

You will also complete an occupational specialism component (Laboratory Sciences).



WORK EXPERIENCE OPPORTUNITIES

Work experience is an important part of your T-Level. You will undertake a substantial industry placement with an employer for a minimum of 45 days during your course to help you prepare for your next steps. You will also undertake an employer-set project as part of the course.

For more information on this course including entry requirements, occupational specialism modules and progression opportunities, head to www.ncl-coll.ac.uk/tlevels

T-LEVELS
THE NEXT LEVEL QUALIFICATION



WHAT WILL I LEARN?

You will study the following core modules:

- Working within the health and science sector
- The science sector
- Health, safety and environmental regulations in the health and science sector
- Application of safety, health and environmental practices in the workplace
- Managing information and data within the health and science sector

*subject to approval

FOUNDATION LEARNING

Foundation learning courses at Newcastle College offer you a route into the vocational area of your choice. As part of the course, you will have the opportunity to study a vocational subject one day per week. This will help you develop an understanding of the vocational areas you are planning to access in the future. As part of the programme, you will have the opportunity to further develop your English and maths skills alongside your vocational studies. These are ideal entry level courses to set you up for further study at Newcastle College.



This is a progression-focused course which concentrates on the development of English and maths skills, whilst boosting your confidence and self-esteem. As part of the course, you will have the opportunity to study a vocational subject one day per week. This will help and support you develop your English and maths skills further.

The programme offers you the choice of courses in art, construction, childcare, health and care, digital and more.

The Foundation Learning Progression Pledge will support learners who successfully complete their vocational studies, successfully achieve Functional Skills Level 1 in both English and maths, whilst also having an attendance record of 95% or above to progress onto the next vocational level within Newcastle College.

Access to ESOL

(English for speakers of other languages)

If English is not your first language, the ESOL fast-track course will help you to improve your reading, writing, speaking and listening in English. Improving your English will help with your progression onto further study at Newcastle College.

ON COURSE FOR THE NEXT STEP.

On completion of your course, your Personal Tutor will support you to make future course choices. There are plenty of vocational courses for you to choose from, depending on your area of interest.



for information on foundation learning courses.



APPRENTICESHIPS

Apprenticeships are a great way to get yourself into the world of work whilst studying for a qualification. It means you can earn while you learn. Here at Newcastle College we know that the next step might seem daunting, but our experienced team is here to guide you along the way.



Where will I study?

During an apprenticeship you will be employed within a business doing a real job, whilst being supported through nationally accredited training delivered by Newcastle College. Our apprenticeships will support you with building a range of skills you can develop throughout your career.

Which level will I study?

Apprenticeships are available to anyone aged 16 and over and are offered at different levels. You'll start on a level relevant to your experience and skill level. Apprenticeships take a minimum of 12 months to complete and you'll split your time between industry and being at college.

What areas can I do an apprenticeship in?

Automotive

Motor Vehicle Service and Maintenance Technician

Business

Business Administrator
Customer Service Practitioner
Team Leader

Construction

Advanced Carpentry and Joinery
Bricklayer
Carpentry and Joinery
Installation Electrician/Maintenance Electrician
Painter and Decorator
Plasterer
Plumbing and Domestic Heating Technician
Roofer

Digital

Creative Digital Design Professional
Digital Marketer
Digital and Technology Solutions
Information Communications Technician

Energy

Metal Fabricator
Plate Welder

Engineering

Engineering Fitter
Maintenance and Operations Engineering Technician

Hair Professional

Hair Professional

Hospitality

Commis Chef

Rail

Rail Engineering Technician

top tips

Here are Ben Caisley's top tips for studying an Apprenticeship:

- 1 Make sure you put the work in – you only get out what you put in.
- 2 Never be afraid to ask questions – if someone else knows more about a topic than you, learn from them.
- 3 Be sociable – it doesn't just help you make friends, but also helps you build strong relationships with your teachers.
- 4 Always try to apply what you learn – the best way to use the knowledge you pick up in classes is to apply it with the skills you'll pick up from your apprenticeship.
- 5 Try to have fun – juggling work and classes can be intense sometimes, but there's always a chance to have a laugh with people too. So be serious about your work, but don't be overly serious in your attitude.

click here 

for information on apprenticeships.



ART AND DESIGN

Our exciting courses will put your creativity to the test to prepare you for your future career. They will combine practical work, theory and work-related projects to give you the expertise you need to succeed. Benefit from a range of opportunities to showcase your work through live projects and exhibitions and build a portfolio of work to help you progress into further study or employment.

courses

Art and Design	L1 L2 L3
Fashion, Business and Retail	L3
Fashion and Textiles	L3
Foundation Diploma (UAL) Art and Design	L3
Interior and Architectural Fundamentals	L3
Subsidiary Diploma in Visual Arts (UAL)	L3

Many of our art and design courses require you to hold a qualification in an art-based subject and be able to provide a portfolio of work which demonstrates your skills. When you apply you'll be invited in to meet course tutors and to show your artwork.



Which level will I study?

We have a course for everyone, regardless of your qualifications. Take a look at **page 26** for details on entry requirements and the level you'll begin at.



What's next?

Once you have completed your Level 3 course you can stay at Newcastle College to study a degree at the University Centre! We've got a range of degrees to choose from in art and design, including Fine Art, Fashion, Interior Design, Textiles, Surface Design and Product Development.

you'll learn in amazing facilities

Based within our School of Art in Mandela you'll have access to fully-equipped design studios, art studios and Mac suites. There is also wood and ceramic workshops with CNC and laser cutting facilities, a first-class screen-printing studio with fabric-printing facilities and modern workshops, plus a gallery space.



for information on art and design courses.



on course to be...

- ★ an Architect
- ★ a Curator
- ★ an Entrepreneur
- ★ a Fashion Buyer
- ★ a Fashion Designer
- ★ a Fine Artist
- ★ an Illustrator
- ★ an Interior Designer
- ★ a Surface/Pattern Designer
- ★ a Tattoo Artist
- ★ a Textile Designer
- ★ a Teacher
- ★ a Visual Artist
- ★ a Visual Merchandiser.

AUTOMOTIVE

If you have a passion for cars and want to learn about how they work, our automotive courses will put you in the driving seat for a career in the automotive industry. You'll learn from industry experienced tutors and gain hands-on experience in our Automotive Academy, to get the skills you need to work in garages, dealerships or workshops.



courses

Automotive Maintenance and Repair **L1 L2 L3**

Vehicle Accident Repair (Multi-Skilled) **L1 L2 L3**

Typically you'll begin studying at Level 1 or Level 2 and progress up to Level 3. If you already hold an automotive qualification from another school or college you may be able to enter directly onto a Level 3 course.



for information
on automotive
courses.



Which level will I study?

We have a course for everyone, regardless of your qualifications. Take a look at **page 26** for details on entry requirements and the level you'll begin at.



you'll learn in amazing facilities

Our dedicated Automotive Academy includes electronic diagnostic test equipment (Snap-On), computerised paint mixing and spray painting booth (Junair). The facility also boasts MIG and TIG welding sets, computerised vehicle measuring and straightening jigs (Car-o-Liner), mobile air conditioning rigs and a Hunter HawkEye Wheel Alignment. Some theory sessions will take place at our main campus, a short walk from the Automotive Academy.



on course to be...

- ★ an Apprentice in the sector
- ★ an Automotive Technician
- ★ a Body Repair Technician
- ★ an Entry-Level Automotive role
- ★ a Paint Repair Technician
- ★ a Refinisher
- ★ a Service Manager.

In other news...

Newcastle College has partnered with Autotech Academy to give newly qualified automotive students the best chance of employment and to secure internship opportunities. Scan to find out more.



AVIATION

As an aviation student, you'll be based at our award-winning Aviation Academy and have a learning experience like no other. Work alongside industry professionals and gain work experience whilst learning the skills you need for a high-flying career in the aviation engineering sector.



courses

Aeronautical Engineering

L3

Study requirements

When you apply to study at Level 3 at the Aviation Academy you'll begin on a Subsidiary Diploma and in your second year progress onto the full Diploma.

Which level will I study?

We have a course for everyone, regardless of your qualifications. Take a look at **page 26** for details on entry requirements and the level you'll begin at.

What's next?

Once you have completed your Level 3 course you can stay at Newcastle College to study a degree at the University Centre, such as Aircraft Maintenance Engineering.

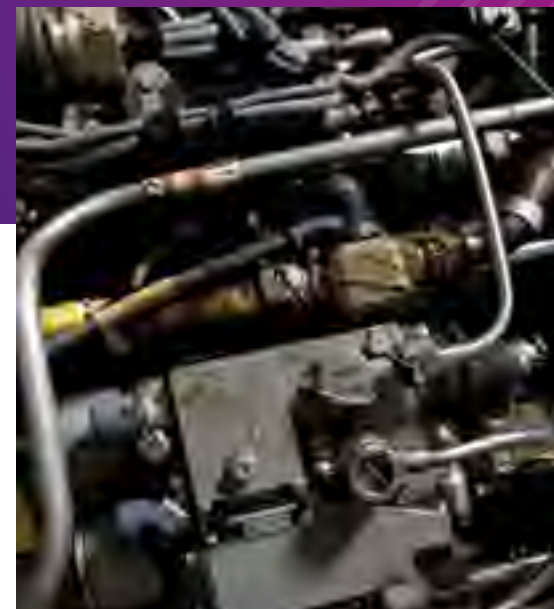


for information on aviation courses.



you'll learn in amazing facilities

Our Aviation Academy, based at Newcastle International Airport, includes a 12,000m², aircraft hangar, multiple training aircraft including a BAE Jetstream 31, Piper Aztec and a Boeing 737. You'll also have access to an avionics laboratory, an electronics training suite and an aerospace, mechanical and airframe repair workshop.



on course to be...

- ★ an Aircraft Designer
- ★ an Aircraft Maintenance Engineer.



to find out what our student say.



BUSINESS

Our business courses will allow you to explore all of the key areas which make a business run smoothly, from HR to finance, marketing to retail and project management to business change. You'll also develop your entrepreneurial skills, perfect if you'd like to set up your own business in the future. You'll learn from tutors who have worked in industry and you'll work with local employers supporting them on real projects to gain real experience.

courses

Business L3

Business Enterprise L2

Skills for Business L2

When you study our Level 3 in business you'll begin on either a Diploma or an Extended Diploma, depending on the grades you achieve at GCSE.



for information
on business
courses.



Which level will I study?

We have a course for everyone, regardless of your qualifications. Take a look at **page 26** for details on entry requirements and the level you'll begin at.



What's next?

Once you have completed your Level 3 course you can stay at Newcastle College to study a degree at the University Centre, such as Business Management.

you'll learn in amazing facilities

You'll be based in our Trevelyan building and learn in fully equipped classrooms and have access to dedicated learning zones to help develop your professional skills.



on course to be...

- ★ an Accountant
- ★ a Business Administrator
- ★ a Customer Service Coordinator
- ★ a Finance Manager
- ★ a Human Resources Executive
- ★ a Marketing Executive
- ★ an Operations Manager
- ★ a Personal Assistant
- ★ a Project Manager
- ★ a Retail Manager
- ★ a Secretary.

CHILDCARE

If you want a career encouraging children and young people to learn and develop through play, then childcare is for you. You'll gain practical experience in Early Years settings, learning how to look after children safely. You'll also help them to learn and develop using activities and interactions with others, which will start you on your journey towards a rewarding career.



courses

Caring for Children

L2

Childcare and Education

L3

Early Years Practitioner

L2

Our childcare courses require DBS clearance. When you apply you'll be given details on how to make this application.



for information
on childcare
courses.



Which level will I study?

We have a course for everyone, regardless of your qualifications. Take a look at **page 26** for details on entry requirements and the level you'll begin at.



What's next?

Once you have completed your Level 3 course you can stay at Newcastle College to study a degree at the University Centre! We offer a Foundation Degree in Children and Young People that can take your career in childcare to the next level.

you'll learn in amazing facilities

You'll be based in our Parsons building and will benefit from real-work environment simulation rooms for babies and toddlers including baby care area, play facilities and a multi-sensory room for students learning to work with children with supported care needs.



T-LEVELS AVAILABLE IN CHILDCARE

Find out more on page 36



on course to be...

- ★ a Childminder
- ★ a Crèche Assistant
- ★ an Early Years Educator
- ★ a Family Support Worker
- ★ a Nanny
- ★ a Nursery Assistant
- ★ a Primary School Teacher
- ★ a Social Worker.

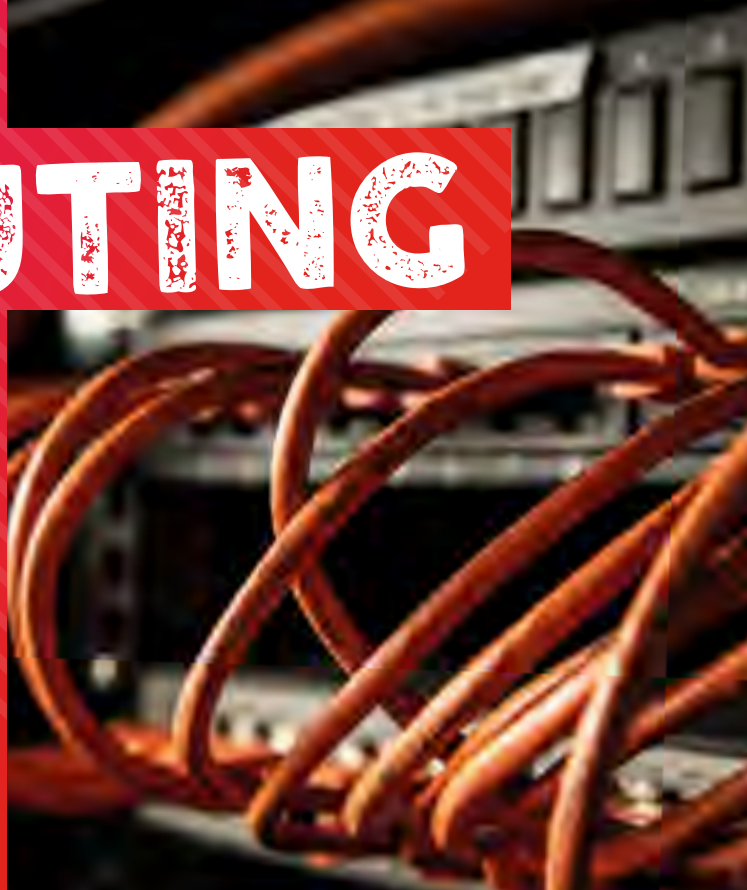
Our Student Experience...

Our childcare students have taken part in activities with different local schools, such as:

- organising parties for local nurseries.
- visiting Seven Stories to learn about reading books to children.
- working with schools and an Adventure Playground to develop understanding of outdoor learning.

COMPUTING

Our computing courses focus on hands-on learning to equip you with the skills and understanding to enter the fast-paced and ever-growing digital tech industry. You'll benefit from great facilities and get to grips with a range of programmes and hardware to enhance your knowledge. Plus, you'll gain practical experience with digital employers and collaborate with students and businesses on exciting projects. Whether you want to specialise in cyber security, web design or gaming, there's a course to help you succeed.



courses

Digital Games Design and Development

L3

Esports

L2 L3

Information Technology

L2 L3

You will begin studying on either a Level 2 or Level 3 course depending on your grades. Once you successfully complete your course you can progress to the next level in computing.



for information
on computing
courses.



Which level will I study?

We have a course for everyone, regardless of your qualifications. Take a look at **page 26** for details on entry requirements and the level you'll begin at.

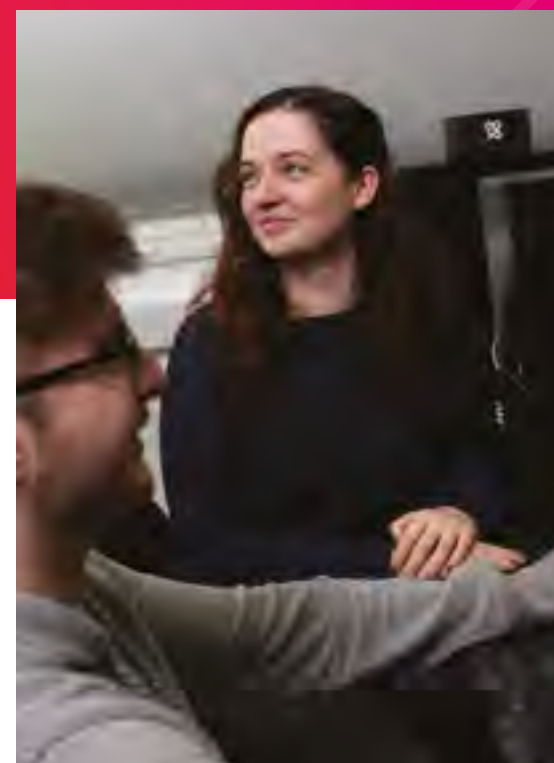


What's next?

Once you have completed your Level 3 course you can stay at Newcastle College to study a degree at the University Centre! We've got a range of degrees to choose from within computing, including Games Technologies and Cyber Security.

you'll learn in amazing facilities

You'll be based in our Trevelyan building and have access to a dedicated IT suite for game rendering and graphics production, network labs with Cisco and Microsoft technologies, IT pods and areas for vendor qualification training, plus much more.



on course to be...

- ★ an IT Technician
- ★ an Operations Manager
- ★ a Network Administrator
- ★ a Project Manager
- ★ a Software or Games Developer
- ★ a Systems Development Manager
- ★ a Security Analyst
- ★ a Security Engineer
- ★ a Web Designer.

T-LEVELS AVAILABLE IN COMPUTING

Find out more on page 36

CONSTRUCTION

If you love hands-on learning and want to develop skills that will always be in high demand, a career in construction could be for you. From plumbing, plastering, and painting to carpentry and joinery, electrical installation or bricklaying, a construction course at Newcastle College can help you craft your future.



courses

Bricklaying	L1 L2
Carpentry and Joinery	L1 L2
Construction Skills	L1
Electrical Installation	L1 L2 L3
Painting and Decorating	L1 L2
Plastering	L1 L2
Plumbing	L1 L2

Typically you will begin studying on a Level 1 course and once you successfully complete your course you can progress to the next level in construction.

Which level will I study?

For most of our construction courses, you'll begin studying at Level 1 and progress to Level 2. If you already hold a construction qualification from another school or college, you can enter directly onto a Level 2 course. For Electrical Installation, you may begin on a Level 2 course, subject to your GCSEs and skills assessment, and progress onto a Level 3 Advanced Technical Diploma.



you'll learn in amazing facilities

You'll be based in the Construction Academy at our Rye Hill campus. This facility is the place to learn bricklaying, plastering, painting and decorating, carpentry and joinery, plumbing and electrical installation. It houses large workshops which replicate different construction sites and real-working environments to help you get to grips with the construction world.



T-LEVELS AVAILABLE IN CONSTRUCTION

Find out more on page 36



for information
on construction
courses.



on course to be...

- ★ a Bricklayer
- ★ a Carpenter
- ★ an Electrician
- ★ a Joiner
- ★ a Painter and Decorator
- ★ a Plumber.

In other news...

Our construction students have gained new specialist skills and qualifications thanks to a partnership with the ABC Assessment Centre. Find out more here:



DIGITAL ARTS

Our digital arts courses help you explore and develop your creativity with practical projects and briefs from employers. This hands-on approach ensures you have every opportunity to demonstrate your creative talent through collaboration, exhibitions, employer projects and workshops, setting you up for your future career in the creative industries. You'll learn from experienced artists and designers using state-of-the-art equipment to help you perfect your technique.

courses

Animation and Illustration

L3

Creative Media Production

L3

Digital Arts

L1 L2

Graphic Design

L3

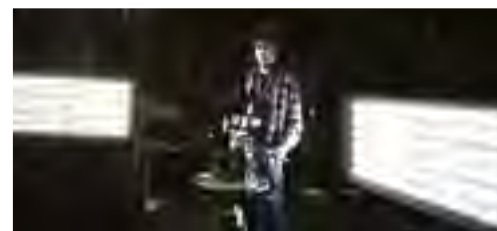
Photography

L3

Many of our digital arts courses require you to provide a portfolio and demonstrate your skills. When you apply you'll be invited in to meet course tutors and show your work.

Which level will I study?

We have a course for everyone, regardless of your qualifications. Take a look at **page 26** for details on entry requirements and the level you'll begin at.



What's next?

Once you have completed your Level 3 course you can stay at Newcastle College to study a degree at the University Centre! We've got a range of degrees to choose from including Photography, Graphic Communication and Creative Video Content.

you'll learn in amazing facilities

You'll be based in our Mandela building with access to a large industry standard photography studio, including tethered capture and darkrooms. There are also screen print studios, Mac suites, an animation, games and visual FX workshop with rendering farm and a TV studio with Black Magic 4k cameras and green screen facilities.



for information on digital arts courses.



on course to be...

- ★ a 2D and 3D Animator
- ★ a Graphic Designer
- ★ a Photographer
- ★ a Producer or Director
- ★ a Scriptwriter
- ★ a Video Producer
- ★ a Web Designer.



ENGINEERING

Engineering courses at Newcastle College focus on giving you hands-on, practical experience and a sound understanding of the theory and principles behind everything you do. You'll join a group of curious and creative minds to spend time researching, designing, building and testing new technologies and products. Learning from expert tutors, you'll develop your skills using specialist equipment in our industry-standard workshops.



you'll learn in amazing facilities

You'll study in our Rutherford building and have access to equipment including a fabrication shop, CNC area including 5 axis CNC mill, 3D printing and design software. We also house a PLC laboratory with Siemens systems and a PLC target training system.



courses

Engineering **L2**

Engineering (Academic) **L3**

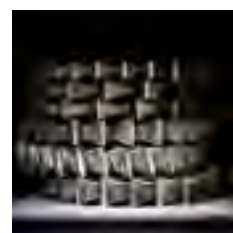
Engineering (Craft Engineering) **L3**

You will begin studying on either a Level 2 or a Level 3 course depending on your grades. Once you successfully complete your course, you can progress to the next level in engineering.



Which level will I study?

We have a course for everyone, regardless of your qualifications. Take a look at **page 26** for details on entry requirements and the level you'll begin at.



What's next?

Once you have completed your Level 3 course, you can stay at Newcastle College to study a degree at the University Centre! We offer degrees in engineering, including Mechanical Manufacturing Engineering, which will kick-start your career in industry.

**click
here**

for information
on engineering
courses.



on course to be...

- ★ an Electrical Engineer
- ★ an Engineering Technician
- ★ a Manufacturing Engineer
- ★ a Mechanical Engineer
- ★ a Military Engineer
- ★ a Quality Engineer.

In other news...

Find out how Newcastle College engineering staff have helped inspire a new generation of students for International Women in Engineering Day.



HAIR, BEAUTY AND MAKE-UP

If you enjoy helping others to look and feel great, a career in the hair, beauty and media make-up industry might just be for you. You'll learn from qualified practitioners and develop your practical skills using industry-standard products and tools within our commercial hair and beauty salon, The Retreat. Work placements offer you the chance to gain real work experience and learn more about what it's like to work in the industry.

courses

Beauty Therapy

L1 L2 L3

Hairdressing

L1 L2 L3

Make-Up and Media Make-Up

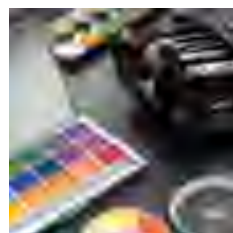
L2 L3

For the majority of our hair, beauty and make-up courses you will begin studying at Level 1 or Level 2 and progress up to Level 3. If you already hold a Level 2 qualification from another school or college you may be able to begin at Level 3.



Which level will I study?

We have a course for everyone, regardless of your qualifications. Take a look at **page 26** for details on entry requirements and the level you'll begin at.



What's next?

Once you have completed your Level 3 course, you can stay at Newcastle College to study a degree at the University Centre! We've got a range of degrees to choose from including Aesthetic Practice and Spa Management and Media and Semi-Permanent Make-Up.

you'll learn in amazing facilities

You'll be based in the Lifestyle Academy at our Rye Hill campus where you will benefit from working in The Retreat, our commercial hair and beauty salon and nail bar. Plus, you'll have access to our beauty and holistic therapy training floor using industry-standard facilities and equipment such as Energist VPL CACI machines.



for information on hair, beauty and make-up courses.



on course to be...

- ★ a Beauty Receptionist
- ★ a Beauty Therapist
- ★ a Colour Technician
- ★ a Hairdresser
- ★ a Make-Up Artist
- ★ a Make-Up Designer
- ★ a Media Make-Up Artist
- ★ a Theatrical Make-Up Artist
- ★ a Salon or Spa Manager
- ★ a Spa Therapist.

In other news...

Find out how our hair and beauty learners won big at a regional hair and beauty therapy competition and how they progressed onto the national finals!



HEALTH AND CARE

Our health and care courses focus on giving you the practical experience and understanding of what it takes to work in the health sector. Learning from experienced tutors, you'll develop your practical skills in our dedicated healthcare facilities, including simulated hospital wards. Work placements will help you develop your understanding of current social issues as well as gain the skills and knowledge you need to work in care, social care or within a medical profession.

courses

Health Academy

L3

Health and Social Care

L1 L2 L3

Typically you'll begin studying at Level 1 or Level 2 and progress up to Level 3. If you already hold a health and care qualification from another school or college you may be able to enter directly onto a Level 3 course.



for information
on health and
care courses.



Which level will I study?

We have a course for everyone, regardless of your qualifications. Take a look at **page 26** for details on entry requirements and the level you'll begin at.



What's next?

Once you have completed your Level 3 course you can stay at Newcastle College to study a degree at the University Centre! We've got a range of degrees to choose from in health and care, including Counselling, Healthcare Practice and Public Health.

you'll learn in amazing facilities

You'll be based within our Parsons building and will benefit from a floor of dedicated facilities including two fully functioning hospital simulation wards, operational hospital reception, intensive care unit, paediatric ward and scrub room, plus much more.



on course to be...

- ★ a Carer
- ★ a Counsellor
- ★ a Family Support Worker
- ★ a Midwife
- ★ a Nurse
- ★ a Paramedic
- ★ a Social Worker
- ★ a Youth Worker.

T-LEVELS AVAILABLE IN HEALTH AND CARE

Find out more on page 36

HOSPITALITY AND CATERING

If you have a passion for food and hospitality, our courses will help you perfect your skills to become a top chef or deliver exceptional front-of-house service. Learn from an expert team in industry-standard kitchens and put your skills to the test in our student-run bistro and fine-dining restaurant, The Chefs' Academy. You may also take part in masterclasses, work placements in restaurants or even national competitions.

courses

Introduction to Hospitality Industry **L1**

Introduction to Professional Cookery **L1**

Professional Cookery **L1 L2 L3**

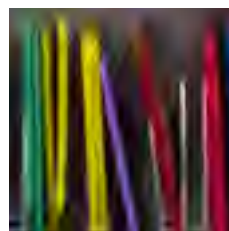
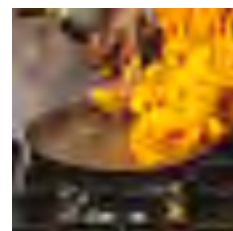
Professional Patisserie and Confectionery **L2 L3**

You'll begin on either a Level 1 or 2. In your second year you'll have the opportunity to progress to the next level, up to a Level 3 in Hospitality, Cookery or Patisserie and Confectionery.



Which level will I study?

We have a course for everyone, regardless of your qualifications. Take a look at **page 26** for details on entry requirements and the level you'll begin at.



What's next?

Once you have completed your Level 3 course, you can stay at Newcastle College to study a degree at the University Centre! We've got a range of degrees to choose from in Hospitality and Catering, including Culinary Arts.

you'll learn in amazing facilities

Newcastle College's hospitality facilities hold Gold Centre of Excellence status for Food and Beverage and Patisserie and Confectionery. You'll learn in professional training kitchens and restaurant, The Chefs' Academy designed to set you up for a fantastic career.



**click
here**

for information
on hospitality and
catering courses.



on course to be...

- ★ a Barista
- ★ a Caterer
- ★ a Chef
- ★ a Front of House Assistant
- ★ a General Manager
- ★ a Restaurant Manager.

In other news...

Find out about how our catering students won the national Seafood Chefs of the Year competition!



LAW, POLICING AND PROTECTIVE SERVICES

Law, policing and protective services courses are the perfect preparation for the challenge of the police and wider criminal justice sector, armed forces and fire service. Supported by industry, they focus on gaining practical experience in your area of interest and you'll benefit from experienced tutors and employer partnerships.

courses

Entry to the Uniformed Public Services **L3**

Policing, Law and Criminology **L3**

Policing **L3**

Protective Services **L1 L2**

When you study our Level 3 in law, policing and protective services you'll begin on either a Diploma or an Extended Diploma, depending on the grades you achieve at GCSE.



for information
on LPPS
courses.



Which level will I study?

We have a course for everyone, regardless of your qualifications. Take a look at **page 26** for details on entry requirements and the level you'll begin at.



What's next?

Once you have completed your Level 3 course you can stay at Newcastle College to study a degree at the University Centre! We've got a range of degrees to choose from in law, policing and protective services, including Professional Policing.

you'll learn in amazing facilities

You'll be based in our Trevelyan building and will have the chance to learn from professionals in dedicated study spaces as well as go behind the scenes to explore careers in the police, the criminal justice system, fire and rescue or the armed forces.



on course to be...

- ★ a Criminologist
- ★ a Firefighter
- ★ an Immigration Officer
- ★ a Military Personnel
- ★ a Police Officer
- ★ a Security Officer
- ★ a Solicitor.



LEARNING DEVELOPMENT

Learning development study programmes at Newcastle College are created to enable those aged 16-24 years who are living with a disability and/or learning difficulty to progress and prepare for employment, make friends and learn to live more independently. Our personalised approach to education and learning will help you to develop a person-centred learning plan across a range of vocational areas.



for information
on learning for
life courses.



Where will I study?

The learning development programme is individual to you. You will be based at our Rye Hill campus in the heart of Newcastle and, if you choose to develop your vocational skills, you'll be placed in one of our real-working environments on campus. Progression onto supported internship placements will be sourced by experienced staff working closely with external employers.

Your experience

Learning development provides group or individual specialist support across a range of vocational areas with excellent facilities and small classes. Your programme will be uniquely tailored to you and may also include travel training, personal and social development and employability skills. When combined with our internal and external work placements, wide range of enrichment activities and dedicated staff, our learners have consistently achieved outstanding achievement rates in nationally recognised qualifications in our core vocational area of retail.

COURSES ON OFFER

Life Skills Year 1 (Award in Personal Progress)

This course is ideal if you're a SEND learner and want to develop your independent living skills. The course will focus on helping you to develop as a person. You could be working on areas such as independent travel, social development, independent living skills and English and maths.

Life Skills Year 2 (Certificate in Personal Progress)

As part of this course, you will have the opportunity to further develop your skills, knowledge and behaviours to help you work towards being as independent as possible in your future. The course will include social development, independent living skills, character and employability skills and English and maths.

Vocational Options

This course gives you the chance to develop your independence and employability skills in a customer-focused setting. The course combines both theory and practical work, a placement in our real-working environment at the College and enrichment activities designed to support your personal and social skills.

Developing Vocational Skills

You will be able to build on your understanding of employment and develop the skills needed to seek employment in your chosen area. You will work with your Personal Tutor to develop your individual learning plan and set realistic learning goals. A placement is an essential part of this course where you will have the opportunity to apply your practical skills and join in with enrichment activities designed to develop your personal and social skills.

Supported Internship

If you have learning difficulties/disabilities but want to gain meaningful experience in a real-working environment outside of the College, then this course is for you. You will access the College one day a week to further develop your maths and English skills. The remainder of the week you will spend time at your external work placement. Your job coach will work with you and support you and your employer to fulfil your training needs.

on
course
to
be...

- ★ an independent person
- ★ a more confident person
- ★ who you want to be.



MUSIC

Our music courses will help you develop your technical, performance and creative skills as a musician, preparing you for a career in the industry. You'll have the chance to produce original music for possible release through our fully functioning record label. You'll also benefit from fantastic facilities and work experience opportunities and be able to collaborate with other students.

courses

Music Industry Skills

L2

Music Performance

L3

Music Production (Electronic Music)

L3

Music Production (Studio and Live Sound)

L3

Our music courses require you to demonstrate your talent through an audition. When you apply you'll be given further details on this.

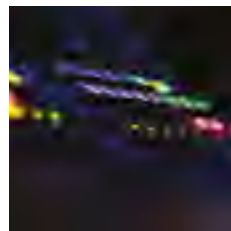
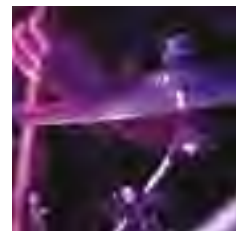


for information
on music
courses.



Which level will I study?

We have a course for everyone, regardless of your qualifications. Take a look at **page 26** for details on entry requirements and the level you'll begin at.



What's next?

Once you have completed your Level 3 course you can stay at Newcastle College to study a degree at the University Centre! We've got a range of degrees to choose from in music, including Music Production and Popular Music Performance.

you'll learn in amazing facilities

You'll study at our renowned Performance Academy, which houses an industry-standard music venue, recording studios, dedicated DJ and electronic music booth and rehearsal rooms. We also have a fully operational record label, with international distribution designed to showcase your original music.



on course to be...

- ★ a Composer
- ★ a DJ
- ★ a Music Manager
- ★ a Music Journalist
- ★ a Music Producer
- ★ a Musician
- ★ a Songwriter
- ★ a Sound Engineer
- ★ a Writer/Composer.

PERFORMING ARTS

Whether you're interested in acting, dance or musical theatre, our performing arts courses will help you to develop your technical and performance skills as well as your industry knowledge. You will learn from industry-experienced tutors in fantastic facilities, including our purpose-built studios and theatre. Your learning will be supported by guest lectures and workshops from leading industry professionals, as well as trips to local and national theatres.

courses

Acting	L3
Dance	L3
Musical Theatre	L3
Performing and Production Arts	L2

Our performing arts courses require you to demonstrate your talent through an audition. When you apply you'll be given further details on this.



Which level will I study?

We have a course for everyone, regardless of your qualifications. Take a look at **page 26** for details on entry requirements and the level you'll begin at.



What's next?

Once you have completed your Level 3 course, you can stay at Newcastle College to study a degree at the University Centre! We've got a range of degrees to choose from in performance and production arts, including Dance, Musical Theatre, and Acting for Stage and Screen.

you'll learn in amazing facilities

You'll study at our nationally renowned Performance Academy, which houses a 200-seat theatre with fly-tower, a studio theatre, nine studios with sprung floors, bars and mirrors and an experimental theatre hub.



on course to be...

- ★ an Actor
- ★ a Choreographer
- ★ a Dancer
- ★ a Director
- ★ an Entertainer
- ★ a Freelance Practitioner
- ★ a Musical Director
- ★ a Musical Theatre Performer
- ★ a Playwright
- ★ a Rehearsal Director
- ★ a Screenwriter
- ★ a Teacher.

click here

for information on performing arts courses.



RAIL AND CIVIL ENGINEERING

Hands-on experience and industry support are at the centre of your learning when you study rail and civil engineering with us. You'll be based at our Rail and Civil Engineering Academy, the only training facility of its kind in the North East, and have opportunities to undertake work experience with local employers. All of this is to help develop the skills and knowledge you need to succeed in the industry.

courses

Civil Engineering

L3

Introduction to the Rail Industry

L2

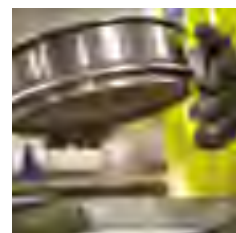
Rail Engineering

L3

You will begin studying on either a Level 2 or Level 3 course depending on your grades. Once you successfully complete your course, you can progress onto the next level in rail and civil engineering.

Which level will I study?

We have a course for everyone, regardless of your qualifications. Take a look at **page 26** for details on entry requirements and the level you'll begin at.



What's next?

Once you have completed your Level 3 course, you can stay at Newcastle College to study a degree at the University Centre! We offer a Foundation degree in Rail Engineering which will help to kick-start your career in industry.

you'll learn in amazing facilities

Our Rail and Civil Engineering Academy in Gateshead boasts overhead line equipment, multiple permanent way set-ups, signalling and mechanical workshops. It also has fully-operating and interlocked switches and crossings, level crossing barriers and signalling equipment, plus much more!



for information on rail and civil engineering courses.



on course to be...

- ★ an Architect
- ★ a Civil Engineer
- ★ a Rail Engineer
- ★ a Site Manager
- ★ a Surveyor
- ★ a Technician.

In other news...

Find out more about how North East industry leaders are getting involved in supporting job creation for our rail and civil engineering learners!



RENEWABLE AND SUBSEA ENGINEERING

Our offshore renewables, subsea and welding courses have been developed with employers and offer exciting career opportunities within the wind energy, subsea, offshore, manufacturing or construction sectors. You'll benefit from links to employers, industry experienced tutors as well as develop your skills in specialist facilities, all to help prepare you for a career in one of the fastest growing industries in the North East.

courses

Engineering and Welding	L1
Engineering for Subsea and Renewable Energy	L3
Engineering (Renewable and Subsea Craft Technician)	L2
Offshore Renewables and Subsea Engineering	L3
Welding Fabrication	L2 L3

Your grades will determine which course level you start on. Once you successfully complete your course you can progress to the next level in renewable and subsea engineering.

Which level will I study?

We have a course for everyone, regardless of your qualifications. Take a look at **page 26** for details on entry requirements and the level you'll begin at.



What's next?

Once you have completed your Level 3 course, you can stay at Newcastle College to study a degree at the University Centre! We offer degrees in Energy Engineering that will help launch your career in the energy industry.

you'll learn in amazing facilities

Depending on your chosen course, you will either be based at our Energy Academy in Wallsend or at the Port of Blyth. You'll access welding and fabrication facilities, wind turbine and solar panel testing plus the world's most advanced Engineering for Subsea and immersive Hybrid Reality System.



on course to be...

- ★ an Energy Engineer
- ★ a Health and Safety Installation Manager
- ★ an Operations Supervisor
- ★ a Project Manager
- ★ a Site Manager
- ★ a Subsea Engineer
- ★ a Wind Turbine Technician.

click
here

for information
on renewable
and subsea
engineering courses.



SCIENCE

If you have a practical mind with a keen interest in the innovative and exciting world of science, then one of our science courses might just be for you. Our courses are career focused, with a strong emphasis on practical and vocational projects to help you develop your skills. You'll benefit from work experience opportunities with a range of local employers and be taught by industry experienced tutors to give you an insight into what it's like to work in the sector.

courses

Applied Science (Biomedical/
Analytical/Physical)

L3

Environmental Science

L3

Forensic and Behavioural Science

L3

Life and Earth Science

L2

Stepping into Science

L1

You will begin studying on either a Level 2 or Level 3 course depending on your grades. Once you successfully complete your course, you can progress to the next level in science.



Which level will I study?

We have a course for everyone, regardless of your qualifications. Take a look at **page 26** for details on entry requirements and the level you'll begin at.



you'll learn in amazing facilities

You'll be based in our Parsons building and you'll have access to an instrumentation centre, fully equipped modern science labs, microbiology analysis labs and an automated process control room. We also house facilities for industrial chemical analysis equipment and a 'class 10,000' clean room.



T-LEVELS AVAILABLE IN SCIENCE

Find out more on page 36



for information
on science
courses.



on course to be...

- ★ an Analytical Chemist
- ★ a Biomedical Scientist
- ★ an Ecologist
- ★ an Environmental Scientist
- ★ an Environmental Technician
- ★ a Forensic Scientist
- ★ a Marine Biologist
- ★ a Pharmacist
- ★ a Psychologist
- ★ a Veterinarian.

SPORT

Study a sport course with us and you'll learn from world-class athletes and industry experienced tutors to develop skills in coaching, fitness and personal development. You will benefit from our strong industry links and work with local sports teams including Newcastle United Foundation, Newcastle Falcons and Newcastle Eagles and have the opportunity to train in their specialist facilities, all to enhance your learning experience.

courses

Sport

L1 L2

Sport and Exercise Science

L3

Sports Coaching and Development

L3

Sports Fitness and Personal Training

L3

Students studying sport can be part of The Newcastle United Foundation Football Development Programme and Durham Ladies Football Development Programme.

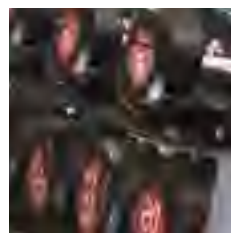


for information
on sport
courses.



Which level will I study?

We have a course for everyone, regardless of your qualifications. Take a look at **page 26** for details on entry requirements and the level you'll begin at.



What's next?

Once you have completed your Level 3 course you can stay at Newcastle College to study a degree at the University Centre! We've got a range of degrees to choose from in sport, including Sport and Exercise Rehabilitation and Physical Education and Sports Coaching.

you'll learn in amazing facilities

You'll be based in our Trevelyan building and you'll have access to fully equipped gyms, a sports hall, sports injury clinic, fitness studio, climbing wall and extensive IT suites along with access to Newcastle Eagles Community Arena with eight court basketball hall, gym and classrooms. You'll also have access to NUCASTLE, Kingston Park and a biomechanics and physiology laboratory with motion analysis.



on course to be...

- ★ a Performance Coach
- ★ a Personal Trainer
- ★ a Physical Education Teacher
- ★ a Physiotherapist
- ★ a Sports Coach.

TRAVEL AND AVIATION OPERATIONS

If you're looking for a course that will broaden your horizons, our travel and aviation operations courses will help take you there. Designed with employers, you'll develop skills in customer service, retail, transport and airline operations to prepare you for working in the travel industry. We have strong links with local travel agencies, hotels and attractions and you'll have the opportunity to gain work experience, as well as undertake industry trips, to give a real taste of what it takes to succeed in the sector.



courses

Aviation Operations (including Cabin Crew) **L2**

Aviation Operations **L2 L3**

Travel and Tourism **L1 L2 L3**

You will begin studying on either a Level 1, Level 2 or Level 3 course depending on your grades. Once you successfully complete your course, you can progress to the next level in travel and aviation operations.

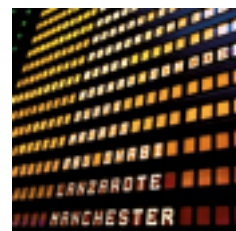


for information on travel and aviation operations courses.



Which level will I study?

We have a course for everyone, regardless of your qualifications. Take a look at **page 26** for details on entry requirements and the level you'll begin at.



What's next?

Once you have completed your Level 3 course, you can stay at Newcastle College to study a degree at the University Centre! We've got a range of degrees to choose from in travel and aviation operations, including Tourism and Events Management and Airline and Airport Management.

you'll learn in amazing facilities

As a travel and tourism student you'll be based at our Lifestyle Academy and learn within our dedicated facilities. For aviation operations, you will learn in our Aviation Academy based at Newcastle International Airport, where you will have access to commercial aircrafts for cabin crew training. You'll also gain experience outside of the classroom through employer partnerships, giving you invaluable opportunities to enhance your CV and prepare yourself for employment.



on course to be...

- ★ an Airport Check-In
- ★ Airport Security
- ★ a Baggage Handler
- ★ a Cabin Crew Member
- ★ a Holiday Resort Representative
- ★ a Hotel Manager
- ★ a Resort Entertainer
- ★ a Travel Agent
- ★ a Tourist Information Adviser.

In other news...

Our travel and hospitality learners recently took over the Copthorne Hotel in Newcastle to gain real-working experience. Find out more:



HOW TO FIND US

By train or Metro

You can take a train or Metro to Central Station which is only a five to ten-minute walk away from our Rye Hill campus. Just turn left out of Central Station and pass Centre for Life. Continue past the Discovery Museum until you come to our campus. A recommended walking route is available from our website. Visit www.ncl-coll.ac.uk/how-to-find-us

By car from the North or South

Take the A1 and follow directions to Newcastle and then pick up the A189 over the Redheugh Bridge. As you cross the Redheugh Bridge, move into the left hand lane and turn left immediately after you have crossed the bridge. At the first roundabout turn right into the Rye Hill campus car park. Parking is free.

By car from Newcastle City Centre

Follow signs to Central Station, or Blaydon A695. Once past the station, bear left at the traffic lights beside the Centre for Life, go straight on at the next traffic lights and turn right at the next traffic lights into Railway Street. Pass under the Redheugh Bridge approach road, bend right with the road and then go straight on at the first roundabout on Scotswood Road into the College car park. Parking is free.

Once on campus

For general enquiries, make your way to Student Services.

Newcastle College
Armstrong House
Rye Hill Campus
Scotswood Road
Newcastle upon Tyne
NE4 7SA

0191 200 4000

enquiries@ncl-coll.ac.uk
www.ncl-coll.ac.uk

Further Newcastle College campuses can be found at:

Automotive Academy
Unit 36 Invincible Drive
Armstrong Industrial Park
Newcastle upon Tyne
NE4 7HX

Aviation Academy
Newcastle International Airport
Woolsington
Newcastle upon Tyne
NE13 8BT

Energy Academy
Hadrian Road
Wallsend
NE28 6HH

Rail and Civil Engineering Academy
William Street
Felling
Gateshead
NE10 0JP



This guide and other course information is available in alternative formats and large print. Call 0191 200 4000.

Safeguarding

We are committed to Safeguarding and ensuring all learners experience a secure, safe and welcoming environment in which they can fulfil their potential. Specific policies and procedures are in place to safeguard young people and vulnerable adults; these are robust and are reviewed regularly. Procedures are in place to take all reasonable measures to ensure risk is minimised and appropriate action is taken to address any welfare concerns.

Newcastle College welcomes diversity in its student population – valuing differences in race, gender, sexual orientation, disability, religion or belief, class and age. We actively oppose discrimination, aim to remove all conditions that put people at a disadvantage, strive to improve access and to provide outstanding support. We are committed to providing an inclusive learning environment. We have produced a Single Equality Scheme which sets out our response to statutory obligations and our approach to the active promotion of equality and diversity. Please discuss your support needs with us and we will make every reasonable effort to make adjustments to help you succeed.

Disclaimer

Newcastle College will take all reasonable steps to provide the educational services and courses as described in this prospectus and in further documents. However, it does not guarantee the provision of such services. The provision of courses is dependent on there being sufficient demand to make their operation viable. At the time of publication (September 2022) all course titles and information were correct.

NCG Guarantee

Newcastle College is proud to be part of NCG, one of the country's leading college groups.

We are one of seven colleges across the country that make up NCG, meaning we're a key part of providing education and training to learners, apprentices and employers across the UK.

Together, we share expertise, support each other to grow, help each other to innovate and accomplish real change for individuals, communities and economies across the country.

Student benefits

Students studying at any of our colleges benefit from the **NCG Guarantee**. This guarantee gives all our students access to a range of tools and initiatives centred around a core set of principles. Our courses, additional support services and enrichment activities will equip you with a wider set of skills, all of which aim to make you more employable.

Put simply, the NCG Guarantee gives students access to additional activities, resources and initiatives to help you achieve your ambitions and career goals.

The NCG Guarantee is centred around:

- Employability
- Community
- Enterprise
- Mental Fitness
- Digital

Throughout your time with us you will be involved in a range of projects and initiatives focused on these principles. Coupled with excellent teaching and learning, you will complete your course with a unique set of skills which help set you up for your future.



**ON
COURSE
FOR
SUCCESS.**

Newcastle College
Rye Hill Campus
Scotswood Road
Newcastle upon Tyne
NE4 7SA

0191 200 4000
enquiries@ncl-coll.ac.uk
www.ncl-coll.ac.uk

