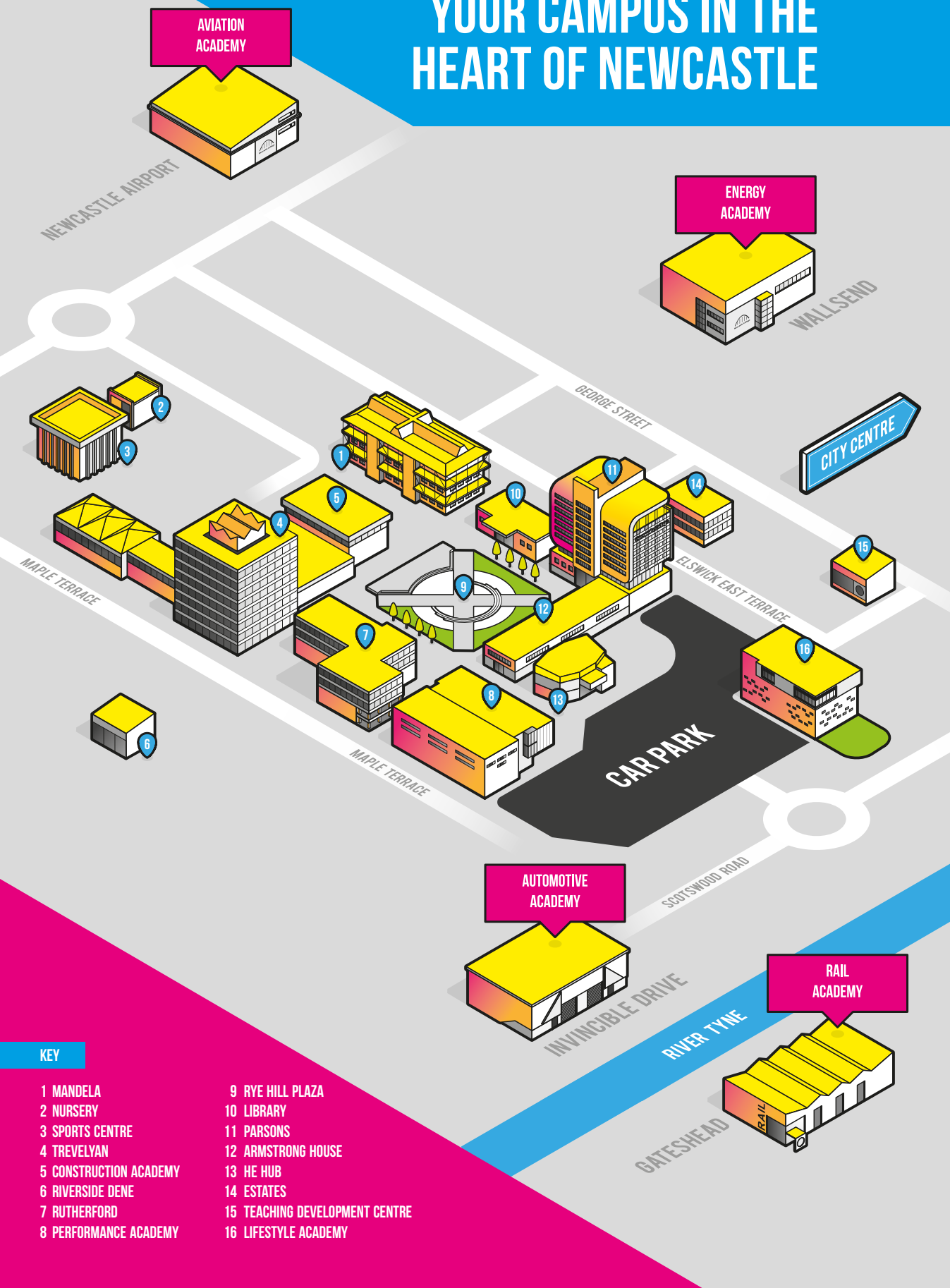


ON COURSE FOR SUCCESS.



full-time
course guide

YOUR CAMPUS IN THE HEART OF NEWCASTLE



KEY

- | | |
|------------------------|--------------------------------|
| 1 MANDELA | 9 RYE HILL PLAZA |
| 2 NURSERY | 10 LIBRARY |
| 3 SPORTS CENTRE | 11 PARSONS |
| 4 TREVELYAN | 12 ARMSTRONG HOUSE |
| 5 CONSTRUCTION ACADEMY | 13 HE HUB |
| 6 RIVERSIDE DENE | 14 ESTATES |
| 7 RUTHERFORD | 15 TEACHING DEVELOPMENT CENTRE |
| 8 PERFORMANCE ACADEMY | 16 LIFESTYLE ACADEMY |

MONTHLY OPEN EVENTS

We're currently holding our Open Events virtually so you can still get a feel for what it's like to study with us and find the right course for you.

What happens at a Virtual Open Event?

- Explore our subject areas on offer by visiting their booths.
- Speak to tutors about the courses you're interested in within dedicated chat rooms.
- Find out about what support services are available to you whilst you study.
- Chat to our Student Services Team about financial support you may be eligible for.
- Take a look at our facilities through our virtual tours.

AT OUR EVENTS WE'LL
HELP YOU MAKE YOUR
APPLICATION!

Please note: dates and venue are subject to change, please visit ncl-coll.ac.uk/events for full details.

Virtual Open Event Dates

WED	OCT 07 4.30PM – 7PM	WED	NOV 04 4.30PM – 7PM
WED	DEC 02 4.30PM – 7PM	WED	JAN 06 4.30PM – 7PM
WED	FEB 03 4.30PM – 7PM	WED	MAR 03 4.30PM – 7PM
THU	APR 01 4.30PM – 7PM		

Future Open Event Dates

WED	MAY 05 4.30PM – 7PM	WED	JUN 09 4.30PM – 7PM
SAT	JUN 26 9.30AM – 12.30PM	WED	JUL 07 4.30PM – 7PM

Principal's welcome

Now is an exciting time for you, as you decide the next steps on your journey. I'm so pleased that you're considering taking them with us.

I remember being in your position, preparing to start at my own college and the feelings of excitement and uncertainty that it brought. I remember it as a time of opportunity, but as with any new experience, I wasn't quite sure what would be expected of me once I got there. Now, as Principal of Newcastle College, I try to remember these feelings and make the student experience one of our top priorities.

Here at Newcastle College, we have a diverse and vibrant student community. By choosing us, you'll become a big part of that. Our campus is an open, welcoming and safe space where everybody has the opportunity to learn, no matter who you are.

As a Newcastle College student, you'll benefit from first-class facilities, tutors with real industry experience and opportunities to work with employers and industry experts. We'll support you to achieve your goals and we'll give you every chance to progress. If you choose to, you could follow in the footsteps of our successful graduates from Newcastle College University Centre, which offers you degree level options all the way to Masters degree.

Our award-winning Student Support Team is also on hand to help you get the best out of your time here if you need them and I'm confident we can provide you with the right support and skills for you to excel.

If you've got any questions or concerns, get in touch with our friendly Student Services Team, or join us at an Open Event, where you can chat to tutors and find the right course for you.

Remember that you'll not be taking these next steps alone. You will start your college journey as part of our community and alongside others in exactly the same position as you. Plus, there is plenty of support available to you if you need it.

I hope that Newcastle College will be the next step on your journey and that I'll be welcoming you onto campus very soon.

Scott Bullock
Principal, Newcastle College



student

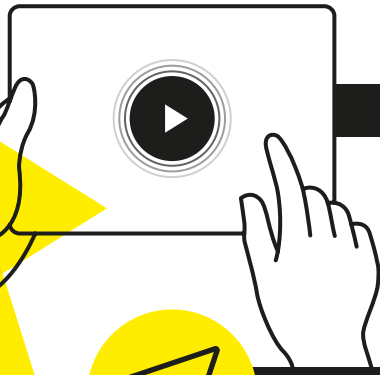
Principal's welcome	2
Our guide is interactive	4
Being a student at Newcastle College	6
Student life	8
Get the career you want	10
Links to employers	11
Inspirational facilities	12
Help with costs	24
Travel to and from college	26
Student support	28
Course levels	30
English and maths	31
How to apply	32
Progression opportunities at Newcastle College	34
Information for parents and guardians	36

Courses

Foundation Learning	38
Apprenticeships	40
Art and Design	42
Automotive	44
Aviation	46
Business	48
Childcare	50
Computing	52
Construction	54
Digital Arts	56
Hair and Beauty	58
Health and Care	60
Hospitality and Catering	62
Law, Policing and Protective Services	64
Learning Development	66
Manufacturing Engineering	68
Music	70
Performance and Production Arts	72
Rail and Civil Engineering	74
Renewable and Subsea Engineering	76
Science	78
Sport	80
Travel and Tourism	82
How to find us	84

OUR GUIDE IS INTERACTIVE

We've introduced some interactive features within this guide to help you get a real insight into what it's like to be a student at Newcastle College and see what you'll get to experience when you study with us.



Videos

When you see a video icon (above), click the play button and a video will display on screen so you can see for yourself what awaits you at Newcastle College!



Web links

We've added web links throughout the guide so you can quickly access information about any areas you're interested in.

Quick links

We've added quick links to our contents page so you don't have to scroll through the guide to get to where you want to be. Simply click on the page number link you want to find out more about and away you go!



being a student at Newcastle college

Choose to study with us and we'll do everything we can to make sure you're on course for success. We'll support you throughout your studies to realise your potential and really enjoy the best days of student life. By studying at Newcastle College, you're taking that next step into independent learning and you'll be treated as an adult. We're here for you, and in return, you will also have responsibilities as a Newcastle College student.

Attendance

It's important you turn up to your lessons – after all, you can't learn if you're not here! Missing lessons impacts on your learning and your classmates too. We understand there may be times when you're unwell and when this happens you must report your absence. You'll be given details of how to do this when you enrol.

English and maths

If you're 16 -18 years old and don't quite achieve a grade 4 at GCSE then you'll continue to have lessons in these areas. English and maths are an important part of any career and in order to pass your course you'll need to undertake GCSE resits. We'll provide you with everything you need, it's then up to you to work hard and get the grades you need!

Deadlines

Your coursework and projects are really important, they are a key part of your course and how we track your progress and assess your learning. It's important you learn how to manage your time and meet deadlines for your coursework.

Safety first

When you complete your enrolment and are given a lanyard, you're officially a student. This is your ID and every student and staff member is required to wear it at all times. This is to keep everyone on our campus safe.

Be respectful

Our campus is a diverse and welcoming place and it's important that every single one of our students and staff feels safe and comfortable when they're here. That includes you! So we ask that you keep our campus clean and tidy and treat everybody you meet with respect. There is zero tolerance for violence, bullying or threatening behaviour.



student life

Students' Union

You automatically become a member of Newcastle College Students' Union when you become a student at the College. Once you've enrolled, you can purchase an **NUS TOTUM** card which will give you a variety of **discounts and offers**. The Students' Union (SU) offers advice, campaigns on your behalf and works across the College to ensure you have a fantastic student experience whilst you progress through your studies. They also have a social programme running throughout the year including trips, events, volunteering and opportunities to start and become members of clubs and societies.

ncl-coll.ac.uk/studentsunion

At Newcastle College we want you to enjoy your time with us. We aim to give you as many opportunities as possible to have fun and make memories alongside your studies.

what our students say...

Trips and visits

Student awards ceremonies

Exhibitions and theatre shows

Costa Coffee

A range of food outlets



Newcastle College



Was great to speak at @NCLCollege today to photography students about my work and forging a career in photography. Thanks so much for having me.



Newcastle College



Congratulations to three Hair and Beauty students who have made it through to the AHT Final. Craig Warnes, Beatriz Perez-Diaz and Elle Poole all placed second in the regional heat last week and will compete in the final in Blackpool.



Newcastle College



Love these pictures back from @surfermike42 @NCL_Lifestyle of our students visiting Bernachon Paris @bernachonchoc for a tour of their facilities and guest lectures from master chocolatiers.



Newcastle College



#SUPPORT "We're running pop-up bake sales across campus to raise money for Australian wildlife. We heard that many of the rescued animals are still suffering from with serious injuries alongside psychological trauma and we want to help in any way that we can!" Nicole, Childcare

Tell us why you're excited to study with us...

Tag us and use our hashtag **#ImInNCL** to be in with a chance of winning prizes



@newcastlecoll

Get the career you want

Our courses are designed to give you every opportunity to pursue your dream career.

Career focused

Our aim at Newcastle College is to help you develop the skills and knowledge and gain meaningful life experiences to be able to follow your passion into your chosen career.

Throughout your time with us we'll work with you so that you're confident about your career route and we'll give you every opportunity to achieve your aspirations.

Focused around your career

You'll be given countless opportunities to help you get on the right career path for you.

Study with us and benefit from:

- projects with employers.
- work placements.
- drop-in careers advice.
- talks from employers.
- progression opportunities when you complete your course.

What makes up my course?

When you begin studying a full-time course with us you'll be placed on a Programme of Study.

This programme is made up of:

1

Chosen subject

The subject area you've chosen to study.

2

English and maths

You will study this alongside your subject if you don't achieve a grade 4 at GCSE*.

3

Work experience

Links to employers are built into your time at college to give you the chance to apply your new skills.

4

Additional activities

To help you develop as a person and increase your confidence.

* THIS ONLY APPLIES IF YOU ARE 16-18 YEARS OLD.

Links to employers

When you study with us you'll benefit from our exceptional links to employers. We work with local, national and international employers, giving you the chance to hear first-hand about the careers and opportunities available to you.

Employers support our courses in a number of ways:

- Mock interviews
- Guest lectures
- Masterclasses
- Live projects and briefs
- Donating high-quality equipment
- Providing real work experience
- Sponsoring awards ceremonies
- Donating prizes for student work.

Here are some of the employers that support our courses:



Inspirational facilities >>>

We've invested in our facilities to give you the best learning experience possible. Our real-working environments allow you to get a taste of what it's like to work in your chosen industry.



Parsons

Healthcare, childcare and science students benefit from this amazing facility with ten floors. Within Parsons you'll find a paediatric training ward, two hospital wards, clinical stores and a domiciliary care house, a nursery and school training classrooms and industry standard laboratories.

See our [Health and Care](#) courses >

See our [Childcare](#) courses >

See our [Science](#) courses >



Mandela

Our creative hub for art, design and digital arts students, Mandela has drawing, painting and sculpture studios, Mac suites, a 3D design workshop, fashion and textiles workshops, a digital photography suite and animation wing. The building also boasts an impressive gallery where students can showcase their work through public exhibitions.

See our [Art and Design](#) courses >

See our [Digital Arts](#) courses >



Energy Academy

Based in Wallsend, this facility is a hub for specialist engineers wishing to work in subsea and renewable energy engineering technologies. Students studying here can take advantage of welding and fabrication facilities, industry standard CAD software (SolidWorks and Autodesk), and the world's most immersive Hybrid Reality system.

See our [Subsea and Renewable Energy](#) courses



Aviation Academy

Located just off the runway at Newcastle International Airport, this amazing facility consists of an impressive 12,000m² aircraft hangar. Aerospace engineering students train on real aircraft such as a BAE Jetstream 31, Piper Aztec and BAC 1-11 Jet Provosts. Aviation operations students are also based here, learning essential cabin crew skills on our Boeing 737.

See our [Aviation](#) courses >



The highlight of studying at Newcastle College is the friends you make and the tutors. You know your confidence is going to grow being around people who support and want the best for you.

Olivia Williams
Aviation Operations student



Trevelyan

Business, digital technologies, sport and law, policing and protective services students are based here. Students can take advantage of refurbished classrooms and dedicated facilities. There is also a canteen and social space on the ground floor.

See our [Business](#) courses >

See our [Digital Technologies](#) courses >

See our [Sport](#) and [LPPS](#) courses >

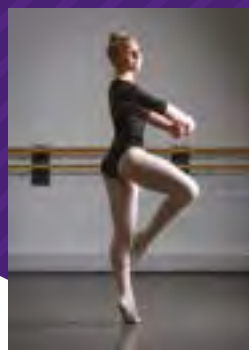


Performance Academy

One of the best facilities in the North East for those who have a passion for music, performance and production arts. Housed within the building is a 200 seat theatre, 10 recording studios with both digital and analogue facilities, dance studios, performance venues, TV studio and editing suite, radio station and record label.

See our [Performance and Production Arts](#) courses >

See our [Music](#) courses >



Rail and Civil Engineering Academy

The Academy in Gateshead has been developed to cater for all aspects of rail and civil engineering. Rail students benefit from electronic signalling systems, overhead line systems and infrastructure maintenance. Civil engineering students have access to a range of dedicated classrooms, facilities and instruments including total stations specific to civil engineering.

See our [Rail](#) courses >

See our [Civil Engineering](#) courses >



ON
COURSE
FOR
SUCCESS.

I was glad of the change Newcastle College brought to my education. The environment suits me better and I enjoy coming to college.

Tait McKenna
Rail Student



Automotive Academy

Our Automotive Academy boasts a light vehicle maintenance facility with electronic diagnostic test equipment (Snap-On), tyre and exhaust replacement bays, computerised paint mixing (water based) and spray painting booth (Junair). Vehicle body repair equipment includes MIG and TIG welding sets, computerised vehicle measuring and straightening jigs (Car-o-Liner), mobile air conditioning rigs and a Hunter HawkEye Wheel Alignment system.

See our [Automotive](#) courses >



Rutherford

Rutherford is home to our manufacturing engineering courses. This is the place to develop your engineering skills across a range of disciplines. The building includes extensive engineering workshops, Computer Aided Design suites and 5-axis CNC milling machine, the largest in any education establishment in the UK.

See our [Engineering](#) courses >



Lifestyle Academy

This Academy is home to students studying hair and beauty, travel and hospitality. Students can develop their skills in our commercial facilities such as The Retreat – our on-site hair and beauty salon and The Chefs' Academy – our 'Highly Commended' AA College Rosette restaurant.

See our [Hair and Beauty](#) courses >

See our [Hospitality and Catering](#) courses >

See our [Travel and Tourism](#) courses >



Construction Academy

This is the place to learn bricklaying, plastering, roofing, painting and decorating, carpentry and joinery, plumbing and electrical installation. The Academy offers large workshops where construction students can hone their skills in an environment which replicates a construction site.

See our [Construction](#) courses >



HELP WITH COSTS

IF YOUR HOUSEHOLD INCOME
IS LESS THAN £28,000
YOU MAY QUALIFY FOR:

FREE meals

You may be entitled to a meal on the days that you are timetabled to attend college. This is allocated to your student number and is accessible via the cashless system, making it easy for you to claim your free meal in one of our many food outlets throughout the College.

FREE equipment and trips

As part of your course, you may benefit from equipment and trips to help with your learning.

For some courses there may be associated costs and depending on your circumstances you may be entitled to help towards these.

For full details contact our team
on 0191 200 4000 or visit
ncl-coll.ac.uk/financial-support

PLEASE NOTE: FINANCIAL SUPPORT IS BASED ON ACADEMIC YEAR 2020/21
AND IS SUBJECT TO CHANGE FOR 2021/22



› Travel to and from College

FREE TRAVEL PASS

WORTH UP TO £1,500

If you are eligible, this pass will cover you for the whole academic year. The College works closely with Go North East, Nexus, Stagecoach and Arriva to ensure you benefit from a travel package, which is best suited to your location. To qualify you must meet one of the following criteria:

- 1** living at home with a household income of under £28,000.
- 2** in care or a care leaver.
- 3** receiving Income Support, or Universal Credit because you are financially supporting yourself or financially supporting yourself and someone who is dependent on you and living with you such as a child or partner.
- 4** receiving Disability Living Allowance or Personal Independence Payments in your own right as well as Employment and Support Allowance or Universal Credit in your own right.

Your route to College

Did you know?

Many of our students do a trial run of their journey to college. Why not try it out to see which route would be best for you?

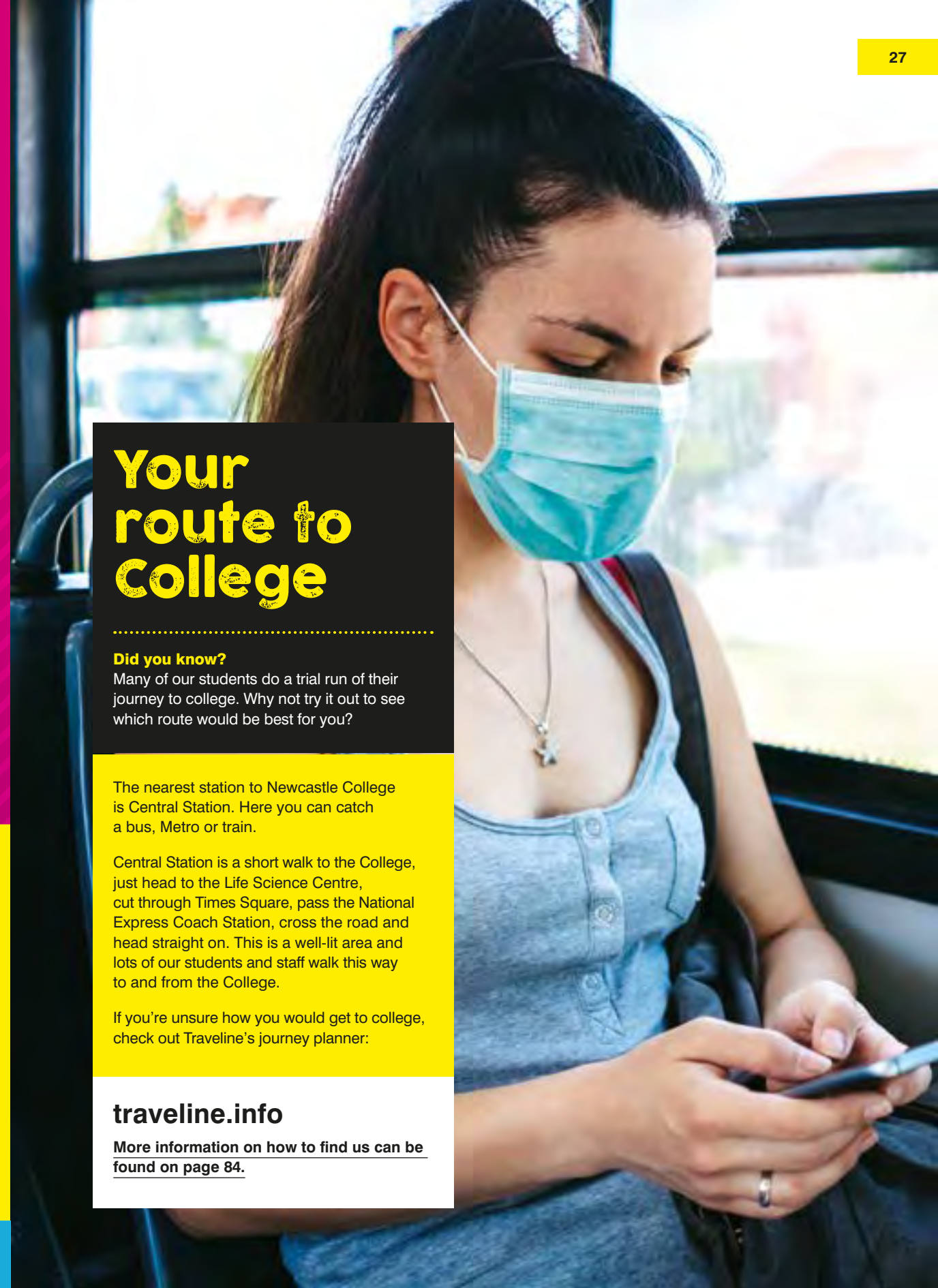
The nearest station to Newcastle College is Central Station. Here you can catch a bus, Metro or train.

Central Station is a short walk to the College, just head to the Life Science Centre, cut through Times Square, pass the National Express Coach Station, cross the road and head straight on. This is a well-lit area and lots of our students and staff walk this way to and from the College.

If you're unsure how you would get to college, check out Traveline's journey planner:

traveline.info

More information on how to find us can be found on page 84.



student support



When you study with us you can access a range of support to help you succeed. Our award-winning Central Support Service is here to provide advice and support to all students.

Learning Support

Our support services are here to offer you disability specific advice, guidance and signposting when you need it. We are committed to putting reasonable adjustments in place to remove barriers to learning and to ensure you have full access to your chosen curriculum. The team can provide a range of support including Communication Support Workers, Learning Support Assistants, help with personal care, additional tuition and much more.

Assistive Technology

The Assistive Technology Team can provide you with equipment, software and training should you have any additional support needs. The team is also home to the Transcription Service which can provide you with expert conversion of course materials, exam papers and other documents into a variety of different formats such as Braille, large print and audio.

Pastoral Support

The Pastoral Support Team will have contact with you at some point during your time at college. We aim to develop and maintain mentoring relationships which contribute to your emotional and physical wellbeing. The team work with you in a number of ways including providing drop-in sessions, group work, one-to-one support and cover areas such as health and wellbeing, employability skills, academic study skills, personal safety and literacy and numeracy.

Library and Learning Spaces

The Library and Learning Spaces Team aim to promote independent learning and provide a secure environment for you to work, study and research in. The team supports the main library and several independent learning spaces around campus, where we are on hand to offer you individual help with research, study, referencing and access to thousands of resources.

Mental Health and Wellbeing

Mental health and wellbeing is important to Newcastle College. That's why we have dedicated teams to support our learners. As individuals we all have worries and anxieties and sometimes these can increase and become more frequent than usual.

Our aim is to ensure we support and respond to your mental health, emotional and social needs whilst you are studying your course with us. We will work with you to put the most appropriate support together and ensure reasonable adjustments are available and in place whilst you are at college.

GET IN TOUCH

Talk to our Central Support Service on

0191 200 4189

or email

css@ncl-coll.ac.uk

to discuss your support needs and how we can help.

COURSE LEVELS

It can be hard to know which course and what level to start on. We have a course for everyone, regardless of your current grades, ability or ambitions. Once you have made an application to study with us, we'll review your application and work with you to ensure you start on a course that is best suited to you. Once you successfully complete that course you can progress onto the next level with us.

Full-time courses

All our courses within this guide are studied full-time, which means you'll be in college most days. You'll focus on one subject, learn in a hands-on way and be assessed through project and practical work. See [page 10](#) for what makes your programme of study.

Apprenticeships

If full-time study isn't for you, why not consider an apprenticeship? With an apprenticeship you'll be in full-time employment which you'll combine with off-the-job training either in college or in the workplace. Check out [page 40](#) for further information.

Which level should I choose?

The level you'll study at usually depends on the grades that you achieve at GCSE. If you don't get the grades you'd hoped for, there's no need to worry. No matter what level you start at, if you successfully complete your course you can then progress to the next level.

★ When you apply please provide us with your predicted GCSE grades.

Level you'll typically begin studying at	Number of GCSEs you'll need to study	Still unsure which level is right for you?
Level 3	5 GCSEs at grade 4 or above	If you are still unsure which level to apply for come along to one of our Open Events to speak to our tutors or student services. Alternatively, call Student Services on 0191 200 4000
Level 1 or 2	4 GCSEs at grade 3 or below	

PLEASE NOTE THAT SOME COURSES MAY REQUIRE GCSE GRADES IN SPECIFIC SUBJECT AREAS E.G. MATHS, ENGLISH AND SCIENCE, WHILE OTHERS WILL REQUIRE YOU TO START AT LEVEL 1 TO LEARN THE TECHNICAL CRAFT OF YOUR CHOSEN SUBJECT.

Course levels within this guide are indicated as follows:

L1 → LEVEL 1
L2 → LEVEL 2
L3 → LEVEL 3

DID YOU KNOW?

When you successfully complete your Level 3 course with us you'll be automatically offered a place at Newcastle College University Centre on one of our degree courses!

The importance of English + maths

Good levels of English and maths at grade 4 GCSE or higher are essential for all job roles. At Newcastle College we place English and maths development at the heart of your Programme of Study and highlight the relevance of these throughout your time on the course. You will continue to develop these skills so you are confident and competent in achieving the required level to progress.

Your timetable will include English and maths lessons and you **must attend** these in order for you to **successfully complete your course.**

All job roles use English and maths skills:

- ★ Car mechanics need to provide quotes and raise invoices.
- ★ Hairdressers need to be able to calculate prices and order stock.
- ★ Chefs need to be able to measure out ingredients and price up menus.
- ★ All workers need to be able to communicate effectively both verbally and in writing.

How to apply

Once you have an idea of what you'd like to study we recommend you make your application as soon as possible to secure your place. We'll then send you all the information you need about the course and all the exciting things you can look forward to when studying with us. This will help you prepare for when you start your course with us.

1 Discover your options

- Visit ncl-coll.ac.uk
- Visit an Open Event (held monthly)
- Contact us on Facebook or Twitter
- Call us on **0191 200 4000**

2 Make your application

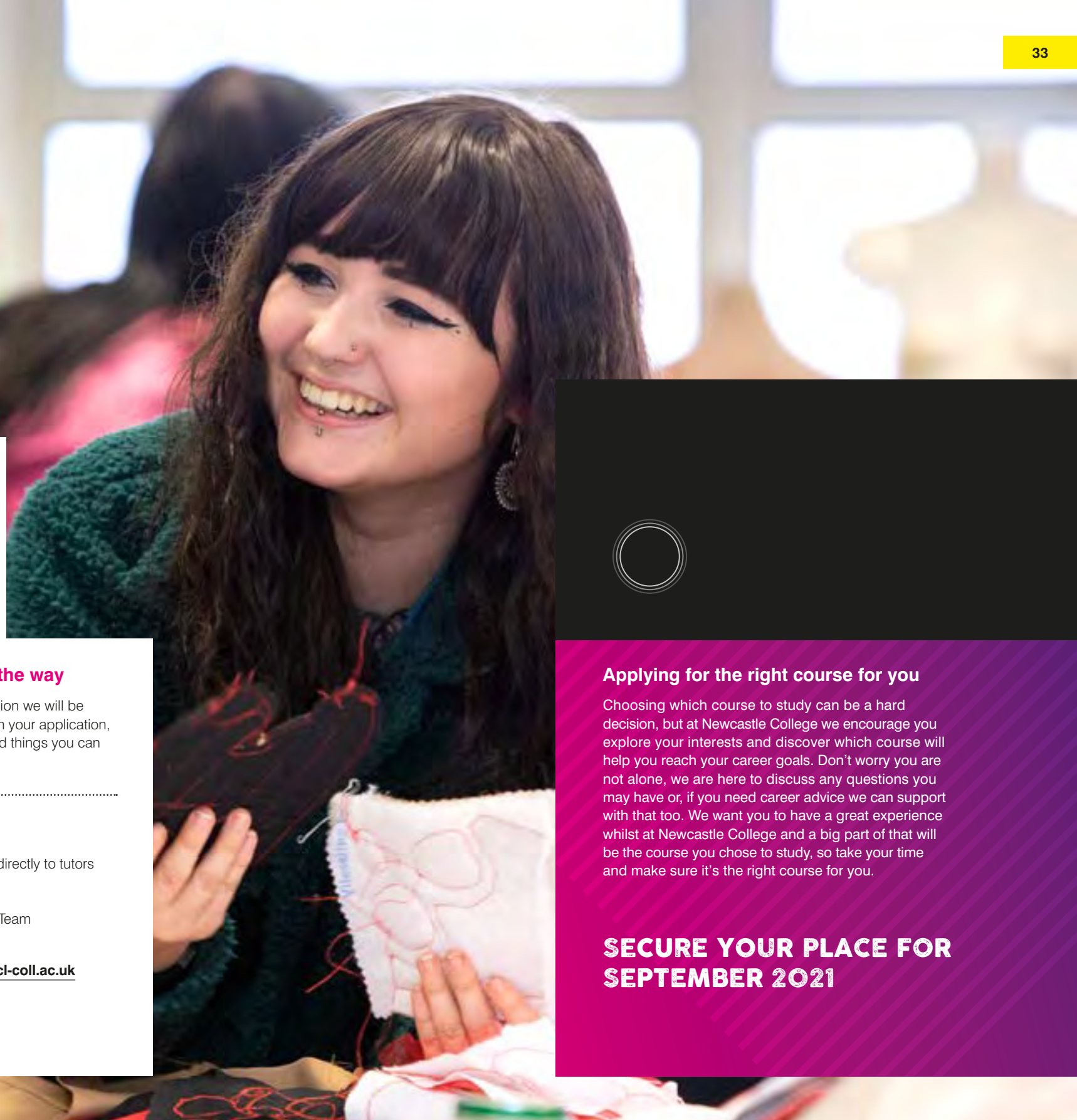
You can search for your course and apply online via our website, it only takes around ten minutes to complete. If you need help completing your application you can join an Open Event or speak to our Student Services Team who can support you through it.

3 With you every step of the way

Once you've made your application we will be in touch to keep you updated with your application, as well as news, competitions and things you can look forward to.

Looking for advice?

- Join an **Open Event** to speak directly to tutors and get course information.
- Speak to our Student Services Team on **0191 200 4000**
- or email them at enquiries@ncl-coll.ac.uk for any career advice you need.



Applying for the right course for you

Choosing which course to study can be a hard decision, but at Newcastle College we encourage you explore your interests and discover which course will help you reach your career goals. Don't worry you are not alone, we are here to discuss any questions you may have or, if you need career advice we can support with that too. We want you to have a great experience whilst at Newcastle College and a big part of that will be the course you chose to study, so take your time and make sure it's the right course for you.

**SECURE YOUR PLACE FOR
SEPTEMBER 2021**

PROGRESSION OPPORTUNITIES

AT NEWCASTLE COLLEGE

Your journey with us does not have to end after you complete your studies. We guarantee a place at Newcastle College University Centre when you successfully complete your Level 3 course.

As a further education student, you might not be thinking about moving to the next step just yet. However, it is always good to know what your future could bring and with Newcastle College, we can help you take that next step into higher education.

Many of our students choose to Step Up to a degree at Newcastle College University Centre. Once they complete their Level 3 course, they choose to progress their studies to gain enhanced skills and knowledge before they pursue their chosen career.

We have over 70 degree courses to choose from with excellent student support and industry-standard facilities.

You can find out more about Steppin' Up at Newcastle College at ncl-coll.ac.uk/steppin-up



STEPPIN' UP

“ KYLE'S STORY

Kyle McMorn progressed from Level 3 Sport to a Foundation Degree in Sports Coaching and Development.

Kyle said: "I've always wanted to become a PE teacher.

"I had many options when it came to studying a degree. University was a big decision but after seeing the facilities on offer at the University Centre there was no other choice.

"For me, Newcastle College University Centre is better than university. It is far more of a relaxed space, less people and so many places to chill. University was too busy for me with too many people around.

"If you are wanting to progress, my tip would be to weigh up all your options. At Newcastle College University Centre you get the exact same degree as you do at any university; that was something I did not know and that changed my mind. Secondly, speak to your tutors. They know more than you and they are there to offer support."



**NEWCASTLE
COLLEGE**
UNIVERSITY
CENTRE

INFORMATION FOR PARENTS AND GUARDIANS

If your son, daughter, or someone you care for, is considering their next steps with Newcastle College, you can rest assured that we're the right choice. Our priority is helping every one of our students to aim high, achieve their goals and progress beyond them.



The College's first-class facilities, experienced tutors and relationships with employers across the region are at the core of everything we do. They are the foundation for providing the right support and skills for our students to excel. Our campus in the heart of the city is open and welcoming and provides a brilliant student experience. We're delighted that we could be the next step in your young person's journey and we think that as a parent or guardian, or carer, you're a huge part of this, so you'll be with us every step of the way.

Your involvement

Coming to college is a huge and exciting step into the real world. A new campus, a new course and new friends. We like to think we help all of our students gain their independence while they're with us. We expect them to turn up, be on time, work hard and strive to be their best.

We also know that you share our goals of wanting our students to succeed and we try to strike a healthy balance. We promise to keep you informed and up-to-date on progress and concerns, but we trust our students to do the rest!



Keeping track of progress

All of our students are assigned a Personal Tutor, who will help them to develop individual targets and progression plans. We encourage our students to take responsibility for their own success and to focus on progressing to the next step. We'll support them in any way we can and they'll meet regularly with their Personal Tutor to help keep them on track.

You can support them too, by having access to the online Student Progress Tracker, as well as direct contact with Personal Tutors if you want to discuss any concerns.

Parents' Evenings

We hold two Parents' Evenings per academic year, which are a great opportunity to discuss progression and success in detail and ask any questions you may have.



A Levels and vocational study – what's the difference?

College programmes are broadly equivalent to A Levels, it's just a different route. They focus more on hands-on and practical skills rather than written assessments, which can be really beneficial when it comes to gaining experience and finding employment. They also train students up in specialist areas, so they can focus on the area that really interests them. In fact, the government are keen to develop even more vocational courses, recognising the benefits of hands-on learning. They are still awarded UCAS points, so students can still progress to university if they succeed on their course.

Any questions?

Join an Open Event to speak to tutors, get course information and see what the campus has to offer.

ncl-coll.ac.uk/events

FOUNDATION LEARNING

Foundation Learning courses at Newcastle College offer you a route to the career of your choice. Our courses help raise confidence, improve study skills and improve your ability in English, maths and many other areas. These are ideal entry level courses to set you up for further study at Newcastle College.



This is a progression-focused course which focuses on the development of English and maths with the aim to boost confidence and self-esteem. As part of the course you will have the opportunity to study a vocational subject one day per week which will help in the application of English and maths. You are able to choose from art, construction, childcare, health care, music and more.

The intent of these courses is to prepare you for further study. Our progression pledge is that learners who successfully complete their vocational Diploma, Level 1 English and maths alongside 95% attendance will progress onto the next vocational level within Newcastle College.

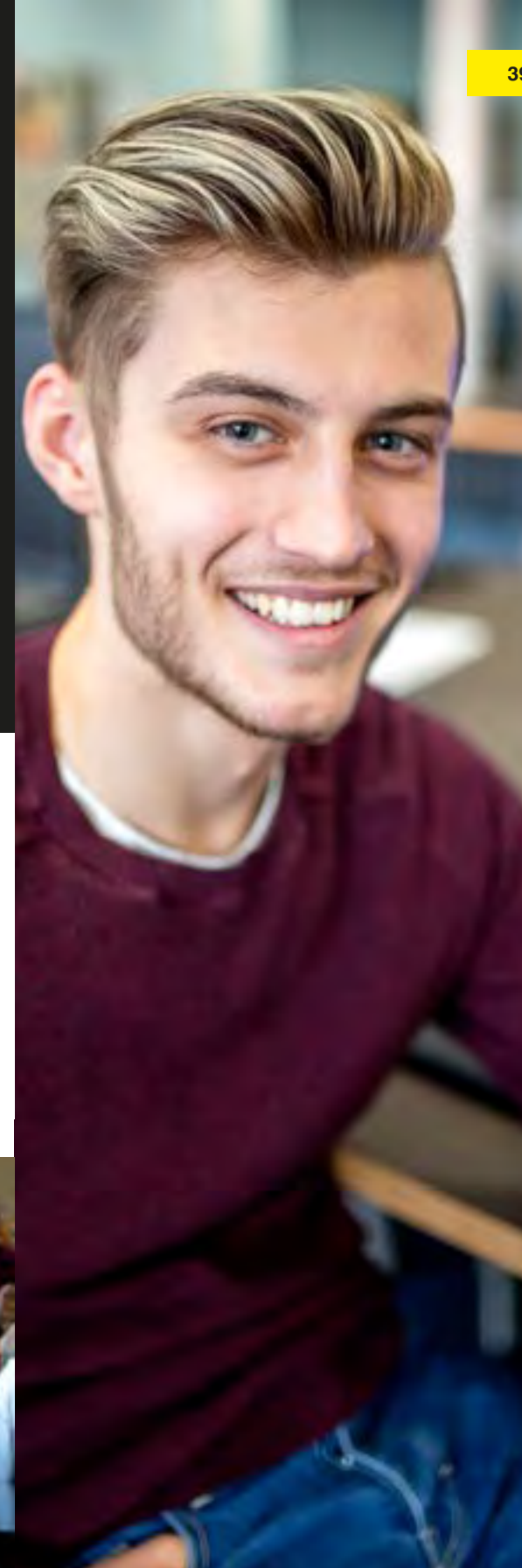
Access to ESOL (English for speakers of other languages)

If English is not your first language, the ESOL fast-track course will help you to improve your reading, writing, listening and speaking in English. Improving your English will make it easier to progress with further study and achieve further qualifications at Newcastle College.

ON COURSE FOR THE NEXT STEP.

On completion of your course, your Personal Tutor will work with you to help you with your future choices. There are plenty of vocational courses for you to choose from, depending on your area of interest.

For more information on our foundation learning courses visit ncl-coll.ac.uk/foundationlearning



APPRENTICESHIPS

Apprenticeships are a great way to get yourself into the world of work whilst studying for a qualification. It means you can earn while you learn. Here at Newcastle College we know that the next step might seem daunting, but our experienced team is here to guide you along the way.



Where will I study?

During an apprenticeship you will be employed within a business doing a real job, whilst being supported through nationally accredited training delivered by Newcastle College. Our apprenticeships will support you with building a variety of transferable skills you can develop throughout your career.

Which level will I study?

Apprenticeships are available to anyone aged 16 and over and are offered at different levels. You'll start on a level relevant to your experience and skill level. Apprenticeships take a minimum of 12 months to complete and you'll split your time between industry and being at college.

What areas can I do an apprenticeship in?

Automotive and Engineering

Automotive
Engineering
Civil Engineering
Manufacturing Operations
Rail Technician

Construction

Bricklaying
Decorating
Fabrication and Welding
Joinery
Plastering
Plumbing and Heating

Business

Accounting
Business Administration
Customer Service
Management
Social and Digital Media
Team Leading

Public Services

Dental Nursing
Science Laboratory
Teaching Assistant

Hospitality, Fitness, Hair and Beauty

Catering
Exercise and Fitness
Hairdressing
Hospitality

IT and Technology

Digital Industries
Infrastructure Technician
Information Technology
Network Engineer
Software Development
Unified Communications

TOP TIP

Get interview-ready by making an appointment with our Learner Engagement Team who can give you interview techniques. Call us today on **0191 200 4781** or email apprenticeships@ncl-coll.ac.uk



For more information on our apprenticeships visit ncl-coll.ac.uk/apprenticeships

Be part of our annual Apprenticeship Awards

ART AND DESIGN

Our exciting courses will put your creativity to the test to prepare you for your future career. They'll combine practical work, theory and work-related projects to give you the expertise you need to succeed. Benefit from opportunities to showcase your work through live-briefs and exhibitions and build a portfolio of work to help you progress into further study or employment.



Where will I study?

You'll have access to fully-equipped design studios, inspiring drawing, painting, sculpture studios and Mac suites. Our dedicated Mandela Building boasts wood and metal workshops with CNC and laser cutting facilities, a first-class screen printing studio with fabric printing facilities and modern fashion, sewing and textile workshops, plus a gallery space.

Which level will I study?

We have a course for everyone, regardless of your qualifications. Take a look at **page 30** for details on entry requirements and the level you'll begin at.

courses

Art and Design	L1 L2 L3
Art and Design Subsidiary Diploma	L3
Fashion, Business and Retail	L3
Fashion and Textiles	L3
Foundation Diploma (UAL) Art and Design	L3
Interior and Architectural Fundamentals	L3

Many of our art and design courses require you to hold a qualification in an art-based subject and be able to provide a portfolio of work which demonstrates your skills. When you apply you'll be invited in to meet course tutors and to show your artwork.

For more information on our art and design courses visit ncl-coll.ac.uk/art-and-design



on course to be...

- ★ an Architect
- ★ a Curator
- ★ a Fashion Buyer
- ★ a Fashion Designer
- ★ a Fine Artist
- ★ an Illustrator
- ★ an Interior Designer
- ★ a Textile Designer
- ★ a Visual Merchandiser.

AUTOMOTIVE

If you have a passion for cars and want to learn about how they work, our automotive courses will put you in the driving seat for a career in the automotive industry. You'll learn from industry experienced tutors and gain hands-on experience in our Automotive Academy, to get the skills you need to work in garages, dealerships or workshops.



Where will I study?

Our dedicated Automotive Academy includes electronic diagnostic test equipment (Snap-On), computerised paint mixing and spray painting booth (Junair). Other equipment includes MIG and TIG welding sets, computerised vehicle measuring and straightening jigs (Car-o-Liner), mobile air conditioning rigs and a Hunter HawkEye Wheel Alignment. Some theory sessions will take place at our main campus, a short walk from the Automotive Academy.

Which level will I study?

We have a course for everyone, regardless of your qualifications. Take a look at [page 30](#) for details on entry requirements and the level you'll begin at.

courses

Light Vehicle Maintenance Repair Principles **L2**

Vehicle Accident Repair (Multi-Skilled) **L1 L2**

Vehicle Systems Maintenance **L1**

Typically you'll begin studying at Level 1 or Level 2 and progress up to Level 3. If you already hold an automotive qualification from another school or college you may be able to enter directly onto a Level 3 course.

For more information on our automotive courses visit ncl-coll.ac.uk/automotive



on course to be...

- ★ an Automotive Technician
- ★ a Body Repair Technician
- ★ a Paint Repair Technician
- ★ a Refinisher
- ★ a Service Manager.



AVIATION

As an aviation student, you'll be based at our award-winning Aviation Academy and have a learning experience like no other. Work alongside industry professionals and gain work experience whilst learning the skills you need for a high-flying career in the sector, whether you want to be an aircraft engineer, member of cabin crew, or working in a variety of aviation operational roles on the ground.



Where will I study?

Our Aviation Academy, which is based at Newcastle International Airport, includes a 12,000m² aircraft hangar, multiple training aircraft including a BAE Jetstream 31, Piper Aztec, Boeing 737 and commercial aircraft for cabin crew training. You'll also have access to an avionics laboratory, an electronics training suite and an aerospace, mechanical and airframe repair workshop.

Which level will I study?

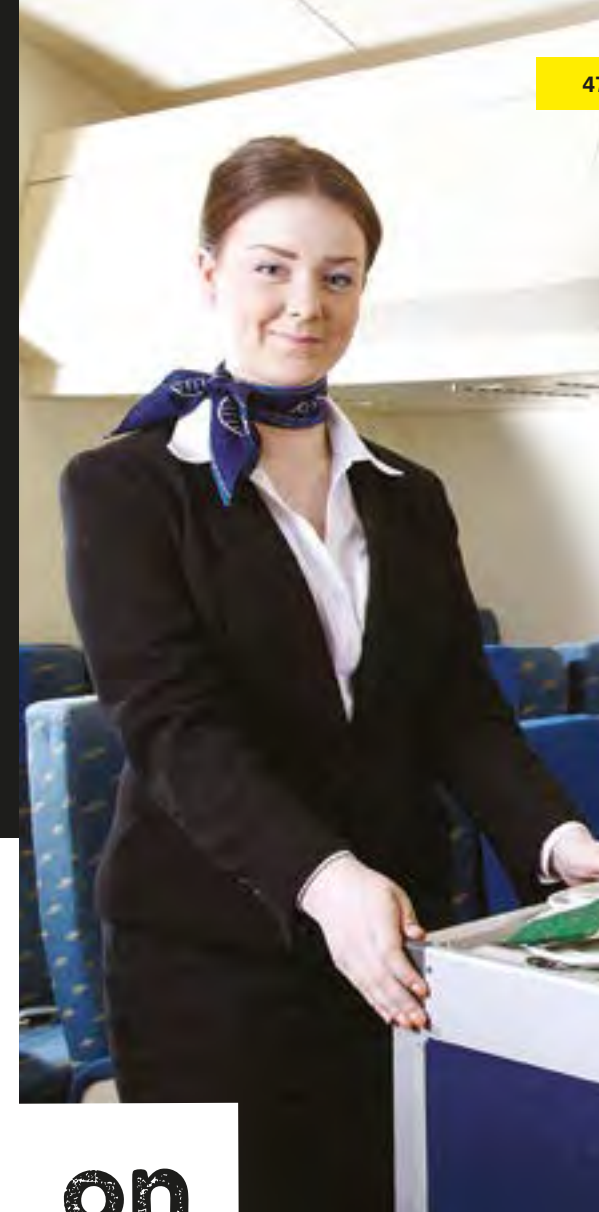
We have a course for everyone, regardless of your qualifications. Take a look at [page 30](#) for details on entry requirements and the level you'll begin at.

courses

Aviation (Operations and Cabin Crew)	L2
Aviation Operations	L3
Aeronautical Engineering	L3

When you apply to study at Level 3 at the Aviation Academy you'll begin on a Subsidiary Diploma and in your second year progress on to the full Diploma.

For more information on our aviation courses visit ncl-coll.ac.uk/aviation



on course to be...

- ★ an Aircraft Designer
- ★ an Aircraft Maintenance Engineer
- ★ an Airline or Airport Manager
- ★ an Airport Security Officer
- ★ a Cabin Crew Member
- ★ a Ground Handling Officer.

BUSINESS

Our business courses will allow you to explore all of the key areas which make a business run smoothly, from HR to finance, marketing to retail and project management to business change. You'll also develop your entrepreneurial skills, perfect if you'd like to set up your own business in the future. You'll learn from tutors who have worked in industry and you'll work with local employers supporting them on real projects to gain real experience.



Where will I study?

You'll be based in our Trevelyan building at our Rye Hill Campus, just at the edge of Newcastle City Centre. There are dedicated learning zones and pop-up shops on campus for you to use to help develop your entrepreneurial skills.

Which level will I study?

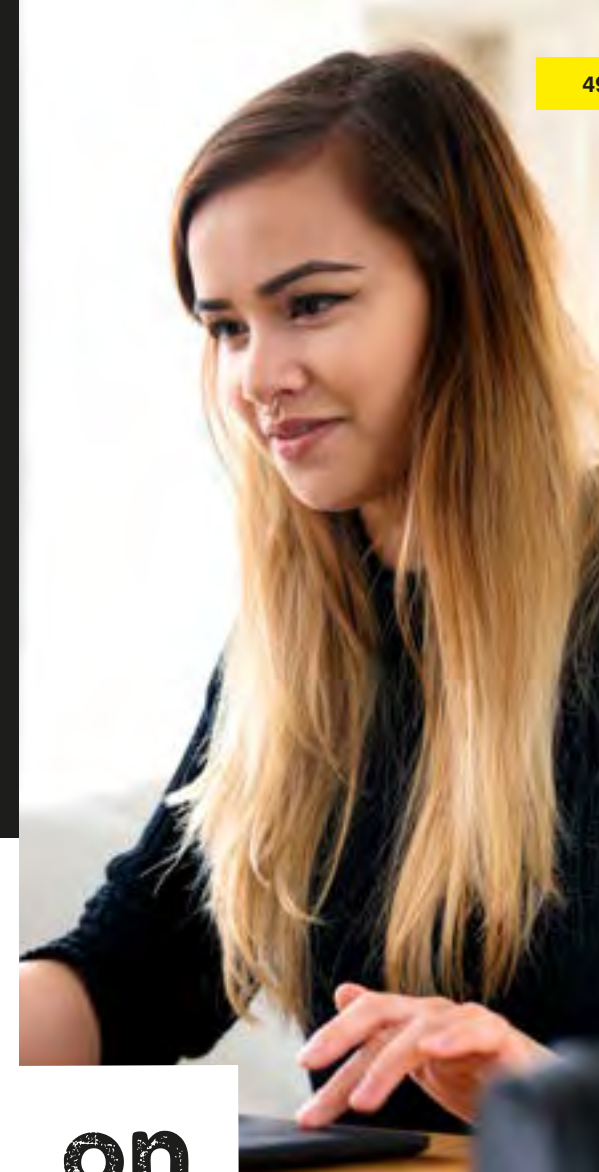
We have a course for everyone, regardless of your qualifications. Take a look at **page 30** for details on entry requirements and the level you'll begin at.

courses

Business	L3
Retail	L2
Skills for Business	L2

When you study our Level 3 in Business you'll begin on either a Diploma or an Extended Diploma, depending on the grades you achieve at GCSE.

For more information on our business courses visit
ncl-coll.ac.uk/business



on course to be...

- ★ an Accountant
- ★ a Business Administrator
- ★ a Customer Service Coordinator
- ★ a Finance Manager
- ★ a Marketing Executive
- ★ a Personal Assistant
- ★ a Project Manager
- ★ a Retail Manager
- ★ a Secretary
- ★ a Visual Merchandiser.

CHILDCARE

If you want a career encouraging children and young people to learn and develop through play, then childcare is for you. You'll gain practical experience in Early Years settings, learning how to look after children safely. You'll also help them to learn and develop using activities and interactions with others, which will start you on your journey towards a rewarding career.



Where will I study?

You'll be based at our Rye Hill Campus in the heart of Newcastle and will benefit from three real-work environment simulation rooms for babies, toddlers and reception children, including baby care area, play facilities and kitchen areas, as well as a multi-sensory room for students learning to work with children with supported care needs.

Which level will I study?

We have a course for everyone, regardless of your qualifications. Take a look at **page 30** for details on entry requirements and the level you'll begin at.

courses

Caring for Children	L2
Childcare and Education	L3
Early Years Practitioner	L2

Our childcare courses require DBS clearance. When you apply you'll be given details on how to make this application.

For more information on our childcare courses visit ncl-coll.ac.uk/childcare



on course to be...

- ★ a Childminder
- ★ a Crèche Assistant
- ★ an Early Years Educator
- ★ a Family Support Worker
- ★ a Nanny
- ★ a Nursery Assistant
- ★ a Primary School Teacher
- ★ a Social Worker.

COMPUTING

Our computing courses focus on hands-on learning to equip you with the skills and understanding to enter the fast-paced and ever-growing digital-tech industry. You'll benefit from great facilities and get to grips with a range of programmes and hardware to enhance your knowledge. Plus, you'll gain practical experience with digital employers and collaborate with students and businesses on exciting projects. Whether you want to specialise in cyber security, digital marketing, web design or gaming, there's a course to help you succeed.



Where will I study?

You'll be based at our Rye Hill Campus and have access to a dedicated IT suite for game rendering and graphics production, network labs with Cisco and Microsoft technologies, IT pods and areas for vendor qualification training. You'll also benefit from specialist software and hardware to support applications and mobile apps development, computer forensics and cyber security.

Which level will I study?

We have a course for everyone, regardless of your qualifications. Take a look at [page 30](#) for details on entry requirements and the level you'll begin at.



courses

Digital Games Design and Development **L3**

Digital Marketing **L3**

Information Technology **L2 L3**

You will begin studying on either a level 2 or level 3 course depending on your grades. Once you successfully complete your course you can progress to the next level in computing.

For more information on our computing courses visit ncl-coll.ac.uk/computing



on course to be...

- ★ an IT Technician
- ★ an Operations Manager
- ★ a Network Administrator
- ★ a Project Manager
- ★ a Software or Games Developer
- ★ a Systems Development Manager
- ★ a Security Analyst
- ★ a Security Engineer
- ★ a Web Designer.

ncl-coll.ac.uk/computing



CONSTRUCTION

If you love hands-on learning and want to develop skills that will always be in high-demand, a career in construction could be for you. From plumbing, plastering, painting, to carpentry and joinery, electrical installation, bricklaying and roofing, a construction course at Newcastle College can help you craft your future.



Where will I study?

You'll be based in the Construction Technical Academy at our Rye Hill Campus. This facility is the place to learn bricklaying, plastering, roofing, painting and decorating, carpentry and joinery, plumbing and electrical installation. It houses large workshops which replicate different construction sites and real-working environments to help you get to grips with the construction world.

Which level will I study?

For most of our construction courses you'll begin studying at Level 1 and progress to Level 2. If you already hold a construction qualification from another school or college you can enter directly onto a Level 2 course. For Electrical Installations, you may begin on a Level 2 course, subject to your GCSEs and skills assessment, and progress onto Level 3 Advanced Technical Diploma.

courses

Bricklaying	L1
Carpentry and Joinery	L1
Electrical Installations	L1 L2
Painting and Decorating	L1
Plastering	L1
Plumbing	L1 L2
Roofing	L2

Typically you will begin studying on a level 1 course and once you successfully complete your course you can progress to the next level in construction.

For more information on our construction courses visit ncl-coll.ac.uk/construction



ON
COURSE
FOR
SUCCESS.

When I started at the College I felt happy and nervous as I didn't know what to expect. There is a friendly atmosphere at the College and my confidence has grown dramatically since starting my course. I have a travel pass to support with getting to and from college and free college meals, this help has been great, it means I don't have to worry about how much it's going to cost.

Paige Ainsley
Construction Student

on course to be...

- ★ a Bricklayer
- ★ a Carpenter
- ★ an Electrician
- ★ a Joiner
- ★ a Painter and Decorator
- ★ a Plumber
- ★ a Roofer.

DIGITAL ARTS

Our digital arts courses help you explore and develop your creativity, putting it to the test with practical projects and briefs from employers. This hands-on approach ensures you have every opportunity to demonstrate your creative talent through student collaboration, exhibitions, employer projects and workshops, setting you up for your future career in the creative industries. You'll learn from experienced artists and designers using state-of-the-art equipment to help you perfect your technique and reach your potential.



Where will I study?

You'll be based at our Rye Hill Campus, with access to a large industry standard photography studio, including tethered capture and darkrooms. There are also screen print studios, Mac suites, an animation, games and visual FX workshop with rendering farm and a TV studio with Black Magic 4k cameras and green screen facilities.

Which level will I study?

We have a course for everyone, regardless of your qualifications. Take a look at **page 30** for details on entry requirements and the level you'll begin at.

courses

Animation and Illustration	L3
Creative Media Production	L3
Digital Design and Media	L1 L2
Graphic Design	L3
Photography	L3

Many of our digital arts courses require you to provide a portfolio and demonstrate your skills. When you apply you'll be invited in to meet course tutors and show your work.

For more information on our digital arts courses visit ncl-coll.ac.uk/digital-arts



“
ON
COURSE
FOR
SUCCESS.”

I chose to study at the College as I don't like exams and felt more hands-on learning and coursework was better for me. The course is helping me become more confident. Tutors and peers are helping me to not be afraid to show different sides of myself and not to question my personality. I have met people that I share common interests with and I have made friends for life.

Jessica Cornforth
Digital Arts Student

on course to be...

- ★ a 2D and 3D Animator
- ★ a Graphic Designer
- ★ a Photographer
- ★ a Producer or Director
- ★ a Scriptwriter
- ★ a Video Producer
- ★ a Web Designer.

HAIR AND BEAUTY

If you enjoy helping others to look and feel great, a career in the hair and beauty industry might just be for you. You'll learn from qualified practitioners and develop your practical skills using industry-standard products and tools within our commercial hair and beauty salon, The Retreat. Work placements offer you the chance to gain real-work experience and learn more about what it's like to work in the industry.



Where will I study?

You'll be based in the Lifestyle Academy at our Rye Hill Campus where you will benefit from working in The Retreat, our commercial hair and beauty salon and nail bar which is open to the public. Plus, you'll have access to our beauty and holistic therapy training floor, a Centre for Excellence for the International Institute for Anti-Ageing.

Which level will I study?

We have a course for everyone, regardless of your qualifications. Take a look at **page 30** for details on entry requirements and the level you'll begin at.

courses

Beauty	L1	L2
Hairdressing	L1	L2
Make-Up		L2

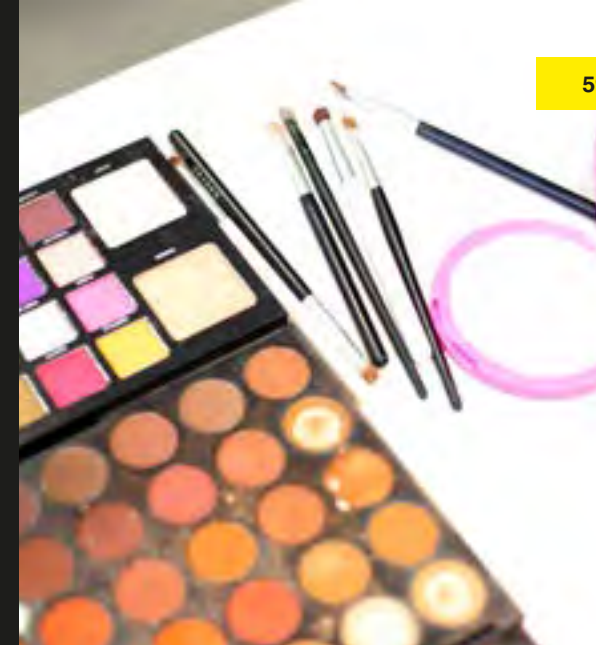
For the majority of our hair and beauty courses you will begin studying at Level 1 or Level 2 and progress up to Level 3. If you already hold a Level 2 qualification from another school or college you may be able to begin at Level 3.

For more information on our hair and beauty courses visit

ncl-coll.ac.uk/hair-and-beauty



You'll have the opportunity to take part in hair and beauty shows



Beauty students pay tribute to the NHS whilst studying from home

on course to be...

- ★ a Beauty Receptionist
- ★ a Beauty Therapist
- ★ a Colour Technician
- ★ a Hairdresser
- ★ a Make-Up Artist
- ★ a Salon or Spa Manager
- ★ a Spa Therapist.

HEALTH AND CARE

Our health and care courses focus on giving you the practical experience and understanding of what it takes to work in the health sector. Learning from experienced tutors, you'll develop your practical skills in our dedicated health care facilities, including simulated hospital wards and science labs. Work placements will help you develop knowledge of current social issues as well as gain the skills and knowledge you need to work in care, social care or within a medical profession.



Where will I study?

You'll be based at our Rye Hill Campus and will benefit from a floor of dedicated facilities, including two fully functioning hospital simulation wards, operational hospital reception, intensive care unit, paediatric ward and scrub room. A two-floor flat houses a working kitchen, bedroom and bathroom with hoist, to help you understand requirements for domiciliary care.

Which level will I study?

We have a course for everyone, regardless of your qualifications. Take a look at **page 30** for details on entry requirements and the level you'll begin at.

courses

Health and Social Care

L1 L2 L3

Our health and care courses require DBS clearance. When you apply you'll be given details on how to make this application.

For more information on our health and care courses visit ncl-coll.ac.uk/health-and-care



on course to be...

- ★ a Carer
- ★ a Counsellor
- ★ a Family Support Worker
- ★ a Midwife
- ★ a Nurse
- ★ a Paramedic
- ★ a Social Worker
- ★ a Youth Worker.

HOSPITALITY AND CATERING

If you have a passion for food and hospitality, our courses will help you perfect your skills to become a top chef or deliver exceptional front-of-house service. Learn from an expert catering team in industry-standard kitchens and put your skills to the test in our student run bistro and fine-dining restaurant, The Chefs' Academy. Outside of the classroom, you could take part in masterclasses with renowned chefs, undertake a work placement in a local restaurant, or even take part in national competitions.



Where will I study?

You'll be based in the Lifestyle Academy at our Rye Hill Campus and will benefit from five professional training kitchens with industry standard equipment. You'll develop your skills working in our healthy eating bistro or à-la-carte restaurant, The Chefs' Academy, a 'Highly Commended' AA College Rosette facility open to the public.

Which level will I study?

We have a course for everyone, regardless of your qualifications. Take a look at **page 30** for details on entry requirements and the level you'll begin at.

courses

Professional Cookery

L1 L2

Professional Patisserie and Confectionery

L3

You'll begin on either a Level 1 or 2. In your second year you'll have the opportunity to progress to the next level, up to a Level 3 in Hospitality, Professional Cookery or Professional Patisserie.

For more information on our hospitality courses visit ncl-coll.ac.uk/hospitality-and-catering



on course to be...

- ★ a Barista
- ★ a Caterer
- ★ a Chef
- ★ a Front of House Assistant
- ★ a General Manager
- ★ a Restaurant Manager.

LAW, POLICING AND PROTECTIVE SERVICES

Law, Policing and Protective Services courses are the perfect preparation for the challenge of the police and wider criminal justice sector, armed forces and fire service. Supported by industry, they focus on gaining practical experience in your area of interest and you'll benefit from experienced tutors and employer partnerships.



Where will I study?

Most courses are based at our Rye Hill campus in Newcastle. The Newcastle Falcons programme is based at Kingston Park. You will benefit from working alongside industry experts and take enrichment opportunities including becoming an army reservist.

Which level will I study?

We have a course for everyone, regardless of your qualifications. Take a look at **page 30** for details on entry requirements and the level you'll begin at.

courses

Entry to the Uniformed Public Services	L3
Policing, Law and Criminology	L3
Policing	L3
Protective Services	L1 L2

Your grades will determine which course level you start on. Once you successfully complete your course you can progress to the next level in law, policing and protective services.

For more information on our LPPS courses visit ncl-coll.ac.uk/LPPS



on course to be...

- ★ a Criminologist
- ★ a Firefighter
- ★ an Immigration Officer
- ★ a Military Personnel
- ★ a Police Officer
- ★ a Security Officer
- ★ a Solicitor.



LEARNING DEVELOPMENT

Learning Development study programmes at Newcastle College are created to enable those, aged 16-24, living with a disability and/or learning difficulty to progress and prepare for employment, make friends and learn to live more independently. Our personalised approach to education and learning will help you to develop a person-centred learning plan across a range of vocational areas.



Where will I study?

The Learning Development programme is individual to you, the places you study in will depend on your own plan. Generally you will be based at our Rye Hill Campus in the heart of Newcastle and if you choose to develop your vocational skills, you'll be placed in one of our real-working environments on campus. Internships will be based at your place of work.

Your experience

Learning Development provides group or specialist support across a range of vocational areas with excellent facilities and small classes. Your programme will be individual to you and may also include travel training, personal and social development and employability skills. When combined with our internal and external work placements, wide range of enrichment activities and dedicated staff, our learners have consistently achieved outstanding achievement rates in nationally recognised qualifications in our core vocational area of retail.

COURSES ON OFFER

Life Skills Year 1 (Award in Personal Progress)

This course is ideal if you're a SEND learner and want to develop your independent living skills. The course will focus on helping you to develop as a person. You could be working on areas such as independent travel, social development, independent living skills and English and maths.

Life Skills Year 2 (Certificate in Personal Progress)

As part of this course, you will have the opportunity to further develop your skills, knowledge and behaviours to help you work towards being as independent as possible in your future. The course will include social development, independent living skills, character and employability skills and English and maths.

Vocational Options

This course gives you the chance to develop your independence and employability skills in a retail setting. You may also have the opportunity to experience a vocational taster in an area such as Childcare, Beauty, Construction or Automotive. The course combines both theory and practical work, a placement in our real-working environment at the College and enrichment activities designed to support your personal and social skills.

Developing Vocational Skills

You will be able to build on your understanding of employment and develop the skills needed to seek employment in your chosen area. You will work with your Personal Tutor to develop your individual learning plan and set realistic learning goals. A placement is an essential part of this course where you will have the opportunity to apply your practical skills and join in with enrichment activities designed to develop your personal and social skills.

Supported Internship

If you have learning difficulties/disabilities but want to gain meaningful experience in a real-working environment outside of the College, then this course is for you. You will access the College one day a week but spend the majority of your time at your work placement. Your job coach will work with you and support you and your employer to fulfil your training needs.

LLDD Customer Service Apprenticeship

This course is ideal if you're looking to progress into paid employment. You will have the opportunity to develop skills and knowledge in the workplace whilst earning a wage and working towards a Level 2 qualification in customer service.

For more information on our learning for life courses visit ncl-coll.ac.uk/learning-development



on course to be...

- ★ an independent person
- ★ a more confident person
- ★ who you want to be.

MANUFACTURING ENGINEERING

Engineering courses at Newcastle College focus on giving you hands-on, practical experience and a sound understanding of the theory and principles behind everything you do. You'll join a group of curious and creative minds to spend time researching, designing, building and testing new technologies and products. Learning from expert tutors, you'll develop your skills using specialist equipment in our industry-standard workshops.



Where will I study?

You'll study at our Rye Hill Campus with access to manufacturing equipment, including a full fabrication shop, manual machine shop, CNC area including 5 axis CNC mill, 3D printing and design software. We also house a PLC laboratory with Siemens systems and a PLC target training system as well as an instrumentation and control facility, electronics training facility and a process plant.

Which level will I study?

We have a course for everyone, regardless of your qualifications. Take a look at [page 30](#) for details on entry requirements and the level you'll begin at.

courses

Engineering	L2
Engineering (Academic)	L3
Engineering (Craft Engineering)	L3

You will begin studying on either a level 2 or level 3 course depending on your grades. Once you successfully complete your course you can progress to the next level in engineering.

For more information on our manufacturing engineering courses visit ncl-coll.ac.uk/manufacturing-engineering



ON
COURSE
FOR
SUCCESS.

The financial support available at the College is great. You can apply for bursaries for uniforms and I have benefited from the free travel to college scheme, college meals and help towards childcare costs. This has really helped me as it's taken away the financial barriers for me, meaning I don't have to worry about how I am going to afford to come to college.

Amber Mathie
Engineering Student

on course to be...

- ★ an Electrical Engineer
- ★ a Manufacturing Engineer
- ★ a Mechanical Engineer
- ★ a Military Engineer.

MUSIC

Our music courses will help you develop your technical, performance and creative skills as a musician, preparing you for a career in the industry. You'll have the chance to produce original music for possible release through our fully functioning record label. You'll also benefit from fantastic facilities, work experience opportunities and be able to collaborate with other students.



Where will I study?

You'll study at our renowned Performance Academy, which houses an industry-standard music venue, recording studios, dedicated DJ and electronic music booth and rehearsal rooms. We also have a fully operational record label, with international distribution designed to showcase your original music.

Which level will I study?

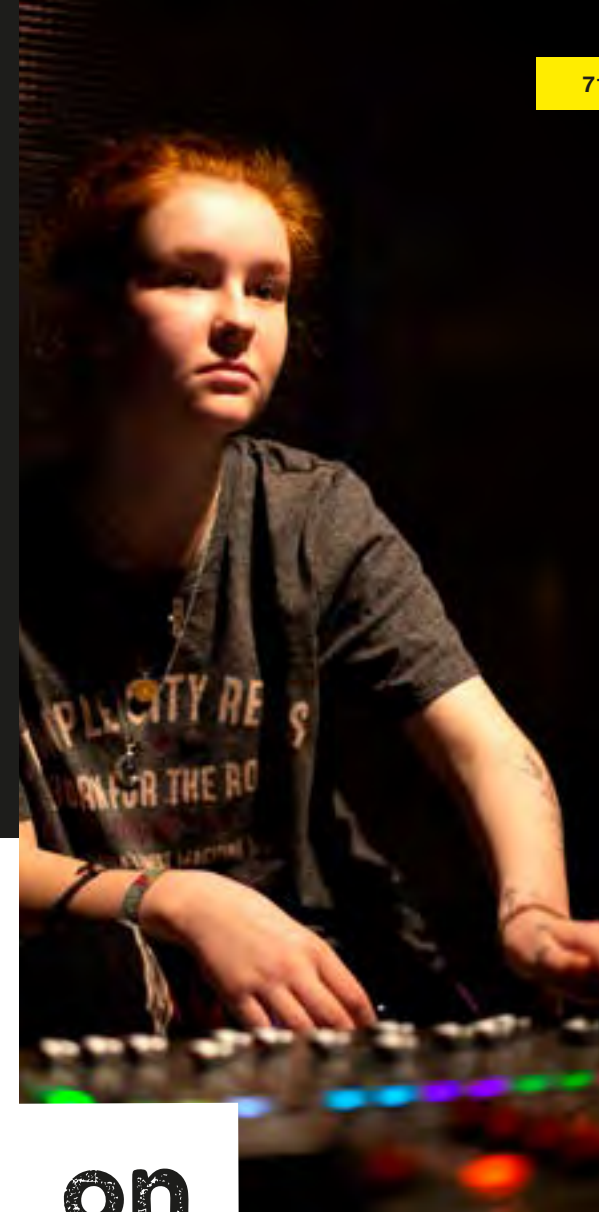
We have a course for everyone, regardless of your qualifications. Take a look at **page 30** for details on entry requirements and the level you'll begin at.

courses

Music Practitioners	L2
Music Practitioners Performance	L3
Music Practitioners DJ and Electronic	L3
Music Practitioner Music Technology	L3

Our music courses require you to demonstrate your talent through an audition. When you apply you'll be given further details on this.

For more information on our music courses visit ncl-coll.ac.uk/music

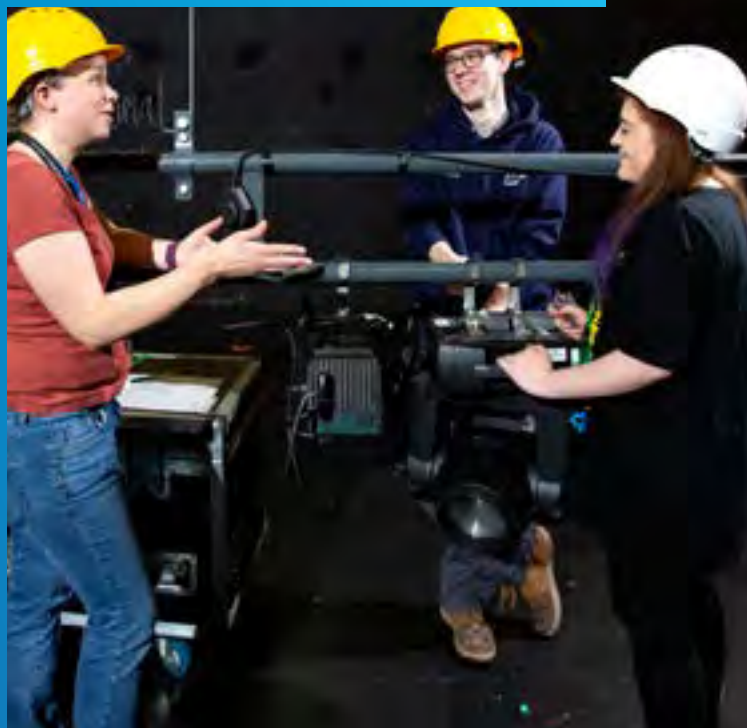


on course to be...

- ★ a Composer
- ★ a DJ
- ★ a Music Producer
- ★ a Musician
- ★ a Songwriter
- ★ a Sound Engineer.

PERFORMANCE AND PRODUCTION ARTS

Whether you're an actor, singer, dancer or musical theatre specialist our performance and production arts courses will help you to develop your technical abilities. You'll learn from industry experienced tutors in fantastic facilities to help set you up for a career in the entertainment industry. You'll benefit from work experience opportunities and guest lectures from leading industry professionals. You will also have the chance to collaborate with students across college.



Where will I study?

You'll study at our nationally-renowned Performance Academy, which houses a 200-seat theatre with fly-tower, a studio theatre, nine studios with sprung floors, barres and mirrors and an experimental theatre hub.

Which level will I study?

We have a course for everyone, regardless of your qualifications. Take a look at **page 30** for details on entry requirements and the level you'll begin at.

courses

Acting	L3
Dance	L3
Musical Theatre	L3
Performing and Production Arts	L2

The majority of our performance and production arts courses require you to demonstrate your talent through an audition. When you apply you'll be given further details on this.

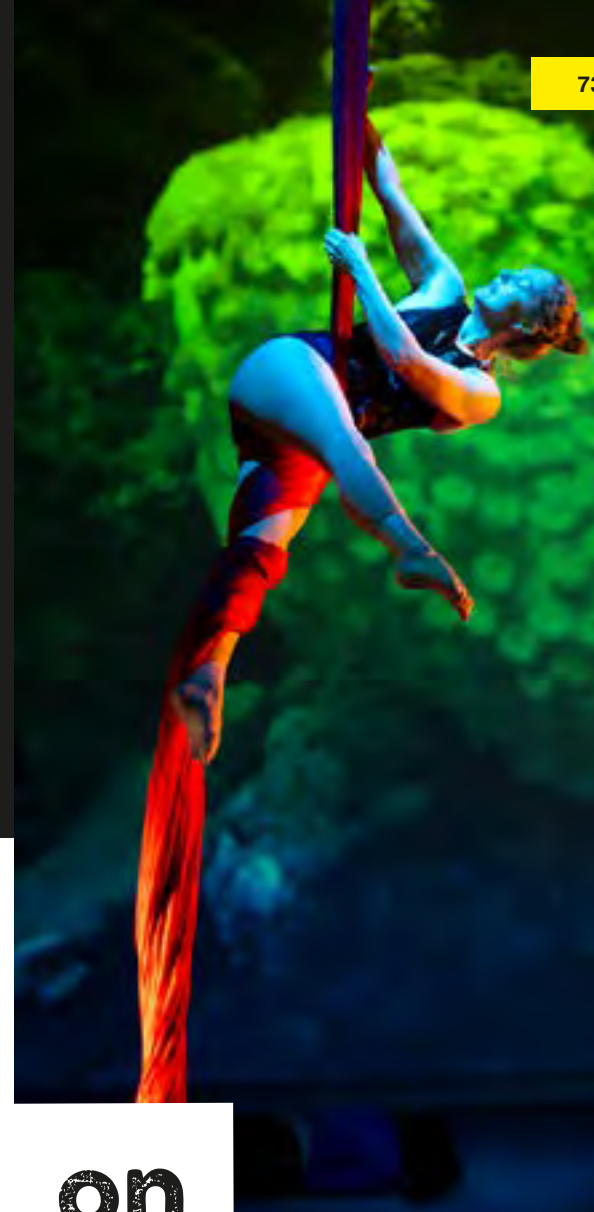
For more information on our performance and production arts courses

ncl-coll.ac.uk/performance-and-production-arts



on course to be...

- ★ an Actor
- ★ a Dancer
- ★ an Entertainer
- ★ a Performer
- ★ a Production Manager
- ★ a Stage Manager
- ★ a Stage Producer.



RAIL AND CIVIL ENGINEERING

Hands-on experience and industry support are at the centre of your learning when you study rail and civil engineering with us. You'll be based at our Rail and Civil Engineering Academy, the only training facility of its kind in the North East and have opportunities to undertake work experience with local employers. All of this is to help develop the skills and knowledge you need to succeed in the industry.



Where will I study?

You'll be based at our specialist Rail and Civil Engineering Academy in Gateshead, which boasts overhead line equipment, multiple permanent way set-ups, signalling and mechanical workshops. It also has fully operating and interlocked switches and crossings, level crossing barriers and signalling equipment, as well as electronic and PLC testing and monitoring equipment. Civil engineering students have access to a soils laboratory, dedicated classrooms, surveying platform and facilities utilising surveying instruments including total stations.

Which level will I study?

We have a course for everyone, regardless of your qualifications. Take a look at **page 30** for details on entry requirements and the level you'll begin at.

courses

Construction and the Built Environment	L2
Introduction to the Rail Industry	L2
Civil Engineering	L3
Rail Engineering	L3

You will begin studying on either a level 2 or level 3 course depending on your grades. Once you successfully complete your course you can progress to the next level in rail and civil engineering.

For more information on our rail and civil engineering courses visit ncl-coll.ac.uk/rail-civil-engineering



ON COURSE FOR SUCCESS.

I enjoy the social side of the course. Everyone here helps each other. The course is closely mirrored to industry so you get a taste of what working in the environment would be like. I know what I have gained from coming to the College is what employers look for and it has set me up really well for a degree. After college my plan is to go to university. Anyone looking at the engineering industry as a career I would say if you enjoy how things work and why then this course is for you.

Olav Johnsen
Built Environment Student

on course to be...

- ★ an Architect
- ★ a Civil Engineer
- ★ a Rail Engineer
- ★ a Site Manager
- ★ a Surveyor
- ★ a Technician.

RENEWABLE AND SUBSEA ENGINEERING

Our offshore renewables, subsea and welding courses have been developed with employers and offer exciting career opportunities within the wind energy, subsea, offshore, manufacturing or construction sectors. You'll benefit from links to employers, industry experienced tutors as well as develop your skills in specialist facilities, all to help prepare you for a career in one of the fastest growing industries in the North East.



Where will I study?

Depending on your chosen course you will either be based at our Energy Academy in Wallsend or at the Port of Blyth. The Energy Academy provides a dedicated space to train for a career in the sector. Take advantage of welding and fabrication facilities, industry standard software, wind turbine and solar panel testing, plus the world's most advanced Engineering for Subsea and immersive Hybrid Reality system.

Which level will I study?

We have a course for everyone, regardless of your qualifications. Take a look at [page 30](#) for details on entry requirements and the level you'll begin at.



courses

Engineering for Subsea and Renewable Energy

L2 L3

Offshore Renewables and Subsea Engineering

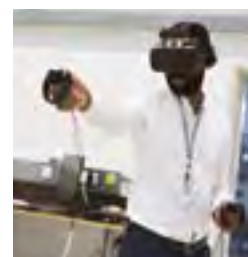
L3

Welding Fabrication

L1 L2 L3

Your grades will determine which course level you start on. Once you successfully complete your course you can progress to the next level in renewable and subsea engineering.

For more information on our renewable and subsea engineering courses visit ncl-coll.ac.uk/renewable-and-subsea



It's easy being green – become part of the initiative too!



on course to be...

- ★ an Energy Engineer
- ★ a Health and Safety Installation Manager
- ★ an Operations Supervisor
- ★ a Project Manager
- ★ a Site Manager
- ★ a Subsea Engineer
- ★ a Wind Turbine Technician.

SCIENCE

If you have a practical mind with a keen interest in the innovative and exciting world of science, then one of our science courses might just be for you. Our courses are career focused, with a strong emphasis on practical and vocational projects to help you develop your skills. You'll benefit from work experience opportunities with a range of local employers and be taught by industry experienced tutors to give you an insight into what it's like to work in the sector.



Where will I study?

You'll be based at our Rye Hill Campus in the heart of Newcastle. You'll have access to an instrumentation centre, fully equipped modern science labs, microbiology analysis labs and an automated process control room. We also house facilities for industrial chemical analysis equipment and a 'class 10,000' clean room.

Which level will I study?

We have a course for everyone, regardless of your qualifications. Take a look at **page 30** for details on entry requirements and the level you'll begin at.

courses

Applied Science

L2 L3

Criminal Investigation with Psychology

L3

You will begin studying on either a level 2 or level 3 course depending on your grades. Once you successfully complete your course you can progress to the next level in science.

For more information on our science courses visit ncl-coll.ac.uk/science



courses



ON
COURSE
FOR
SUCCESS.

I knew someone who was coming here so that helped me make my decision. I have made a lot of friends not just in my class but across the College. The tutors are always there if you need help. The teaching here is very different to Italy, here the teaching environment is more comfortable and teachers are very approachable.

Ivana Odobo
Science Student

on
course
to
be...

- ★ an Analytical Chemist
- ★ a Biomedical Scientist
- ★ a Forensic Scientist
- ★ a Pharmacist
- ★ a Psychologist
- ★ a Veterinarian.

ncl-coll.ac.uk/science

SPORT

Study a sport course with us and you'll learn from world-class athletes and industry-experienced tutors to develop skills in coaching, fitness and personal development. You will benefit from our strong industry links and work with local sports teams including Newcastle United Foundation, Newcastle Falcons and Newcastle Eagles and have the opportunity to train in their specialist facilities, all to enhance your learning experience.



Where will I study?

You'll be based at our Rye Hill Campus in the heart of Newcastle. You'll have access to fully equipped gyms, a sports hall, sports injury clinic, fitness studio, climbing wall and extensive IT suites along with access to Newcastle Eagles Community Arena with eight court basketball hall, gym and classrooms. You'll also have access to a biomechanics and physiology laboratory with motion analysis.

Which level will I study?

We have a course for everyone, regardless of your qualifications. Take a look at [page 30](#) for details on entry requirements and the level you'll begin at.

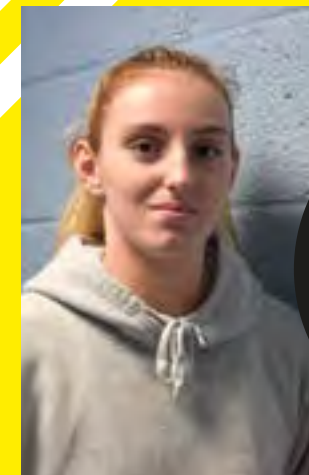
courses

Sport	L1 L2
Sports Coaching and Development	L3
Sports Fitness and Personal Training	L3

Students studying sport can be part of The Newcastle United Foundation Football Development Programme and Durham Ladies Football Development Programme.*

* To be confirmed.

For more information on our sport courses visit ncl-coll.ac.uk/sport



ON
COURSE
FOR
SUCCESS.

When I was looking at what college to go to I came to Newcastle College's Open Event to find out more about the courses on offer. It was good to chat to tutors and get all the information about the courses. I enjoy the theory side of coaching and learning how to put this into practice, the tutors are great at supporting you with this.

Erin McIntosh
Sport student

on course to be...

- ★ a Performance Coach
- ★ a Personal Trainer
- ★ a Physical Education Teacher
- ★ a Physiotherapist
- ★ a Sports Coach.

TRAVEL AND TOURISM

If you're looking for a course that will broaden your horizons, our travel and tourism courses will help take you there. Designed with employers, you'll develop skills in customer service, hospitality and running your own business to prepare you for working in the travel industry. We have strong links with local travel agencies, hotels and attractions and you'll have the opportunity to gain work experience as well as undertake industry trips, to give you a real taste of what it takes to succeed in the sector.



Where will I study?

You'll be based at our Rye Hill Campus in the heart of Newcastle and work within our dedicated facilities which replicate real-working environments. You'll also gain experience outside of the classroom through employer partnerships, giving you invaluable opportunities to enhance your CV and prepare yourself for employment.

Which level will I study?

We have a course for everyone, regardless of your qualifications. Take a look at **page 30** for details on entry requirements and the level you'll begin at.

courses

Travel and Tourism

L2 L3

You will begin studying on either a level 2 or level 3 course depending on your grades. Once you successfully complete your course you can progress to the next level in travel and tourism.

For more information on our travel and tourism courses visit ncl-coll.ac.uk/travel-and-tourism



ON COURSE FOR SUCCESS.

I researched what qualifications my career looked for and Level 3 Travel and Tourism was one of them. I saw the College offered this course so I came to an Open Day. I enjoyed the Open Day it was very informative. I met the course tutor and the information she gave me about the course was very appealing. I also spoke to Student Services they were helpful and provided me with financial information.

Courtney Dean
Travel student

on course to be...

- ★ a Holiday Resort Representative
- ★ a Hotel Manager
- ★ a Resort Entertainer
- ★ a Travel Agent
- ★ a Travel Consultant
- ★ a Tour Manager
- ★ a Tourist Information Adviser.

HOW TO FIND US

By train or Metro

You can take a train or Metro to Central Station which is only a five to ten-minute walk away from our Rye Hill Campus. Just turn left out of Central Station and pass Centre for Life. Continue past the Discovery Museum until you come to our campus. A **recommended walking route** is available from our website.

By car from the North or South

Take the A1 and follow directions to Newcastle and then pick up the A189 over the Redheugh Bridge. As you cross the Redheugh Bridge, move into the left hand lane and turn left immediately after you have crossed the bridge. At the first roundabout turn right into the Rye Hill Campus car park. Parking is free.

By car from Newcastle City Centre

Follow signs to Central Station, or Blaydon A695. Once past the station, bear left at the traffic lights beside the Centre for Life, go straight on at the next traffic lights and turn right at the next traffic lights into Railway Street. Pass under the Redheugh Bridge approach road, bend right with the road and then go straight on at the first roundabout on Scotswood Road into the College car park. Parking is free.

Once on campus

For general enquiries, make your way to Student Services.

Newcastle College
Armstrong House
Rye Hill Campus
Scotswood Road
Newcastle upon Tyne
NE4 7SA

0191 200 4000
enquiries@ncl-coll.ac.uk
ncl-coll.ac.uk

Further Newcastle College campuses can be found at:

Automotive Academy
Unit 36 Invincible Drive
Armstrong Industrial Park
Newcastle upon Tyne
NE4 7HX

Aviation Academy
Newcastle International Airport
Woolsington
Newcastle upon Tyne
NE13 8BT

Energy Academy
Hadrian Road
Wallsend
NE28 6HH

Rail Academy
William Street
Felling
Gateshead
NE10 0JP



This guide and other course information is available in alternative formats and large print. Call 0191 200 4000.

Safeguarding

We are committed to Safeguarding and ensuring all learners experience a secure, safe and welcoming environment in which they can fulfil their potential. Specific policies and procedures are in place to safeguard young people and vulnerable adults; these are robust and are reviewed regularly. Procedures are in place to take all reasonable measures to ensure risk is minimised and appropriate action is taken to address any welfare concerns.

Newcastle College welcomes diversity in its student population – valuing differences in race, gender, sexual orientation, disability, religion or belief, class and age. We actively oppose discrimination, aim to remove all conditions that put people at a disadvantage, strive to improve access and to provide outstanding support. We are committed to providing an inclusive learning environment. We have produced a Single Equality Scheme which sets out our response to statutory obligations and our approach to the active promotion of equality and diversity. Please discuss your support needs with us and we will make every reasonable effort to make adjustments to help you succeed.

Disclaimer

Newcastle College will take all reasonable steps to provide the educational services and courses as described in this prospectus and in further documents. However, it does not guarantee the provision of such services. The provision of courses is dependent on there being sufficient demand to make their operation viable. At the time of publication (November 2020) all course titles and information were correct.

NCG Guarantee

Newcastle College is proud to be part of NCG, one of the country's leading college groups.

We are one of seven colleges across the country that make up NCG, meaning we're a key part of providing education and training to learners, apprentices and employers across the UK.

Together, we share expertise, support each other to grow, help each other to innovate and accomplish real change for individuals, communities and economies across the country.

Student benefits

Students studying at any of our colleges benefit from the **NCG Guarantee**. This guarantee gives all our students, whatever their age or study level, a unique set of employability skills. Our courses, additional support services and enrichment activities will equip you with a wider set of skills, all of which aim to make you more employable.

The NCG Guarantee is centred around a core set of principles:

- Enterprise
- Employability
- Engagement
- Digital
- Mental Fitness

Throughout your time with us you will be involved in a range of projects and initiatives focused on these principles. Coupled with excellent teaching and learning, you will complete your course with a unique set of skills which help set you up for your future.



Newcastle College
Rye Hill Campus
Scotswood Road
Newcastle upon Tyne
NE4 7SA

0191 200 4000
enquiries@ncl-coll.ac.uk
ncl-coll.ac.uk

