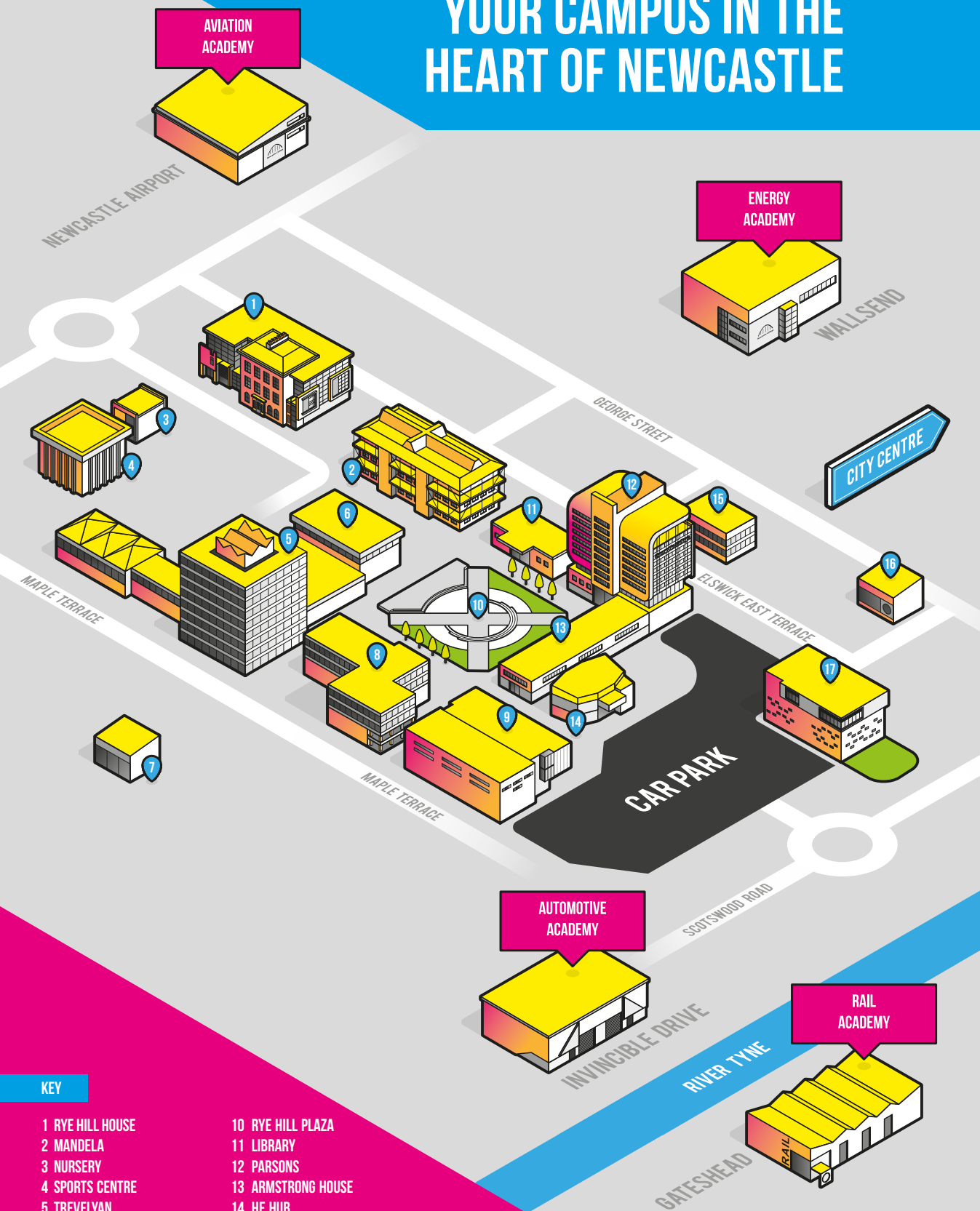


**FULL-
TIME
COURSE
GUIDE**

**ON
COURSE
FOR
SUCCESS.**

YOUR CAMPUS IN THE HEART OF NEWCASTLE



KEY

- | | |
|------------------------|--------------------------------|
| 1 RYE HILL HOUSE | 10 RYE HILL PLAZA |
| 2 MANDELA | 11 LIBRARY |
| 3 NURSERY | 12 PARSONS |
| 4 SPORTS CENTRE | 13 ARMSTRONG HOUSE |
| 5 TREVELYAN | 14 HE HUB |
| 6 CONSTRUCTION ACADEMY | 15 ESTATES |
| 7 RIVERSIDE DENE | 16 TEACHING DEVELOPMENT CENTRE |
| 8 RUTHERFORD | 17 LIFESTYLE ACADEMY |
| 9 PERFORMANCE ACADEMY | |

EVENTS

Choosing a college is a really important decision, and we know our applicants have lots of questions before applying and starting their chosen course at Newcastle College. We run events throughout the year to help give you as much information about all we have to offer.

Monthly Open Events

Visit one of our Open Events and get a feel for what it's like to study with us! We'll help to find the right course for you.

What happens at an Open Event?

Our Open Events are back on campus. Join us to see our fantastic facilities, meet staff and:

- speak to tutors about the courses you're interested in.
- find out what support services are available to you whilst you study.
- chat to our Student Services Team about financial support you may be eligible for.
- see our campus for yourself.

Virtual events

As well as our on-campus events we'll also be running virtual events throughout the year. From subject-specific events to sessions for parents and guardians, our events will help get you prepared for college life. Look out for details on the events page of our website including how to sign up.

At our events we'll help you make your application!

Please note: dates and venue are subject to change, please visit www.ncl-coll.ac.uk/events for full details.

Open Event Dates

WED	OCT 06 4.30PM – 7PM	WED	NOV 03 4.30PM – 7PM
WED	DEC 01 4.30PM – 7PM	THUR	JAN 06 4.30PM – 7PM
WED	FEB 02 4.30PM – 7PM	WED	MAR 02 4.30PM – 7PM
WED	APR 06 4.30PM – 7PM	WED	MAY 04 4.30PM – 7PM
WED	JUN 08 4.30PM – 7PM	SAT	JUN 25 9.30AM – 12.30PM
WED	JUL 06 4.30PM – 7PM		

Principal's welcome

Welcome to Newcastle College. Now is an exciting time for you, as you decide the next steps on your journey. Thinking about your future can be daunting as you're faced with lots of big, but exciting decisions about your future. I'm so pleased that you're considering taking them with us.

I am proud to lead a College that is open, welcoming and offers our diverse and vibrant student community a safe space to be themselves and follow their dreams.

If you choose Newcastle College, you'll become a big part of our community. As a Newcastle College student, you'll benefit from practical lessons in first-class facilities, tutors with real industry experience and opportunities to work with employers and industry experts.

My advice is to follow your passions and we will help give you the skills and experience you need to succeed. We'll support you to achieve your goals and we'll give you every chance to progress. If you choose to, you could follow in the footsteps of our successful graduates from Newcastle College University Centre, which offers you degree options all the way to Masters Degrees.

We are all about preparing you for your future here, but we have all faced lots of challenges together over the past few years. That's why your wellbeing will always come first and you'll be supported throughout your studies by a Personal Tutor and an award-winning student support team who are on hand to help you get the best out of your time here if you need them.

If you've got any questions or concerns, get in touch with our friendly Student Services Team, or join us at an Open Event, where you can meet tutors face-to-face and find the right course for you.

Remember that you'll not be taking these next steps alone. You will start your college journey as part of our community and alongside others in exactly the same position as you. Plus, there is plenty of support available to you if you need it.

I hope that Newcastle College will be the next step on your journey and that I'll be welcoming you on to campus very soon.

Scott Bullock, Principal, Newcastle College



Student

Principal's welcome	2
Our guide is interactive	4
Being a student at Newcastle College	6
Student life	8
Get the career you want	10
Links to employers	11
Inspirational facilities	12
Help with costs	24
Travel to and from college	26
Student support	28
Course levels	30
English and maths	31
How to apply	32
Progression opportunities at Newcastle College	34
A degree with a difference	36
Information for parents and guardians	38
Courses	
Foundation Learning	40
Apprenticeships	42
Art and Design	44
Automotive	46
Aviation	48
Business	50
Childcare	52
Computing	54
Construction	56
Digital Arts	58
Hair and Beauty	60
Health and Care	62
Hospitality and Catering	64
Law, Policing and Protective Services	66
Learning Development	68
Manufacturing Engineering	70
Music	72
Performance and Production Arts	74
Rail and Civil Engineering	76
Renewable and Subsea Engineering	78
Science	80
Sport	82
Travel and Tourism	84
Coming soon! T Levels	86
How to find us	88

OUR GUIDE IS INTERACTIVE

We've introduced some interactive features within this guide to help you get a real insight into what it's like to be a student at Newcastle College and see what you'll get to experience when you study with us.

scan me



QR Codes

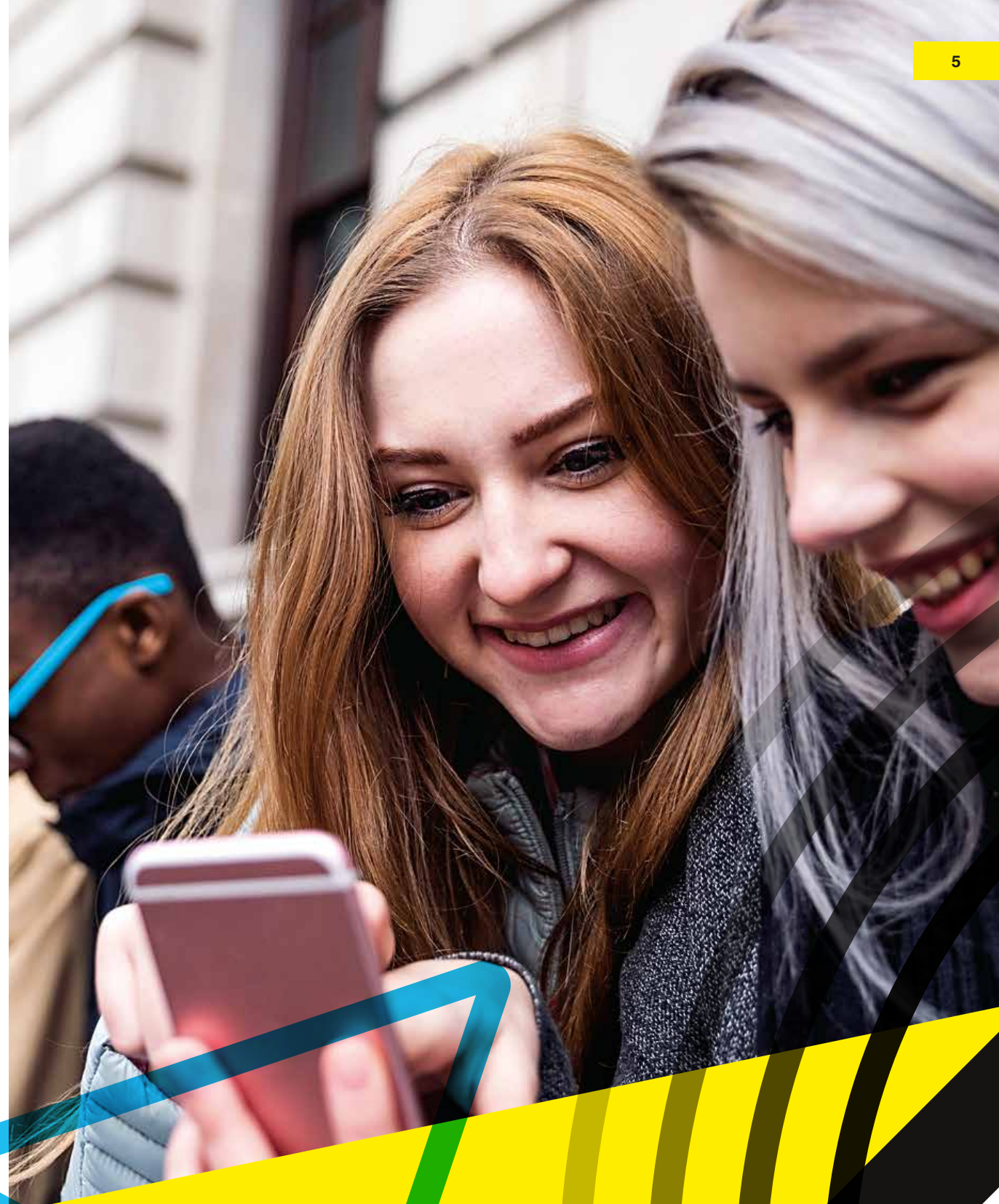
When you see a QR code simply scan with your phone (most cameras scan QR codes or use a QR code reader) and click the link that appears at the top of your screen. This will display content so you can see for yourself what awaits you at Newcastle College!

Don't have a QR code reader?

You can still access all our videos by visiting the Newcastle College YouTube channel:



[youtube.com/newcastlecollege](https://www.youtube.com/newcastlecollege)



being a student at Newcastle college

Choose to study with us and we'll do everything we can to make sure you're on course for success. We'll support you throughout your studies to realise your potential and really enjoy the best days of student life. By studying at Newcastle College, you're taking that next step into independent learning and you'll be treated as an adult. We're here for you, and in return, you will also have responsibilities as a Newcastle College student.

Attendance

It's important you turn up to your lessons – after all, you can't learn if you're not here! Missing lessons impacts on your learning and your classmates too. We understand there may be times when you're unwell and when this happens you must report your absence. You'll be given details of how to do this when you enrol.

English and maths

If you're 16 -18 years old and don't quite achieve a grade 4 at GCSE then you'll continue to have lessons in these areas. English and maths are an important part of any career. In order to pass your course you'll need to undertake GCSE resits or Functional Skills qualifications. We'll provide you with everything you need, it's then up to you to work hard and get the grades you need!

Deadlines

Your coursework and projects are really important. They are a key part of your course and how we track your progress and assess your learning. It's important you learn how to manage your time and meet deadlines for your coursework.

Safety first

When you complete your enrolment and are given a lanyard, you're officially a student. This is your ID and every student and staff member is required to wear it at all times. This is to keep everyone on our campus safe.

Be respectful

Our campus is a diverse and welcoming place and it's important that every single one of our students and staff feels safe and comfortable when they're here. That includes you! So we ask that you keep our campus clean and tidy and treat everybody you meet with respect. There is zero tolerance for violence, bullying or threatening behaviour.



student life

Students' Union

You automatically become a member of Newcastle College Students' Union when you become a student at the College. Once you've enrolled, you can purchase an **NUS TOTUM** card which will give you a variety of **discounts and offers**. The Students' Union (SU) offers advice, campaigns on your behalf and works across the College to ensure you have a fantastic student experience whilst you progress through your studies. They also have a social programme running throughout the year including trips, events, volunteering and opportunities to start and become members of clubs and societies.

scan
me



Grab a
glimpse of life
on campus.

Trips and visits

Student awards ceremonies

Exhibitions and theatre shows

Costa Coffee

A range of food outlets



Newcastle College



The friends you make at college could be the friends you make for life!

We LOVE these photos of our students having fun and loving life together. Happy International Day of Friendship everyone!



Newcastle College



Great to see some of our Sport students and lecturers enjoying a spot of kayaking on their trip to Hadrian's Walk today!



Newcastle College



We're so proud of Rebecca, one of our blind and partially-sighted learners who made and sold pom-pom keyrings to raise money to sponsor a guide dog and help other blind people within her community!



Newcastle College



Amazing work on show from our hospitality students as part of NCG's first Annual Skills Competition!

Tell us why you're excited to study with us...

Tag us and use our hashtag **#ImInNCL** to be in with a chance of winning prizes



Get the career you want

Our courses are designed to give you every opportunity to pursue your dream career.

Career focused

Our aim at Newcastle College is to help you develop the skills and knowledge and gain meaningful life experiences to be able to follow your passion into your chosen career.

Throughout your time with us we'll work with you so that you're confident about your career route and we'll give you every opportunity to achieve your aspirations.

Focused around your career

You'll be given countless opportunities to help you get on the right career path for you.

Study with us and benefit from:

- projects with employers
- work placements
- drop-in careers advice
- talks from employers
- progression opportunities when you complete your course.

What makes up my course?

When you begin studying a full-time course with us you'll be placed on a Programme of Study.

This programme is made up of:

1

Chosen subject

The subject area you've chosen to study.

2

English and maths

You will study this alongside your subject if you don't achieve a grade 4 at GCSE*.

3

Work experience

Links to employers are built into your time at college to give you the chance to apply your new skills.

4

Additional activities

To help you develop as a person and increase your confidence.

* THIS ONLY APPLIES IF YOU ARE 16-18 YEARS OLD.

Links to employers

When you study with us you'll benefit from our exceptional links to employers. We work with local, national and international employers, giving you the chance to hear first-hand about the careers and opportunities available to you.

Employers support our courses in a number of ways:

- Mock interviews
- Guest lectures
- Masterclasses
- Live projects and briefs
- Donating high-quality equipment
- Providing real work experience
- Sponsoring awards ceremonies
- Donating prizes for student work.

Here are some of the employers that support our courses:



Inspirational facilities >>>

We've invested in our facilities to give you the best learning experience possible. Our real-working environments allow you to get a taste of what it's like to work in your chosen industry.



Parsons

Health and care, childcare and science students benefit from this amazing facility with ten floors. Within Parsons you'll find a paediatric training ward, two hospital wards, clinical stores and a domiciliary care house, a nursery and school training classrooms and industry standard laboratories.



Take a tour of Parsons.



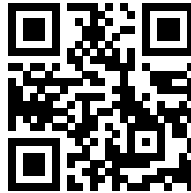
My course in 30 seconds.



Mandela

Our creative hub for art, design and digital arts students, Mandela has drawing, painting and sculpture studios, Mac suites, a 3D design workshop, fashion and textiles workshops, a digital photography suite and animation wing. The building also boasts an impressive gallery where students can showcase their work through public exhibitions.

scan
me



Take a tour of
Mandela.

Life as an
animation
student.



Energy Academy

Based in Wallsend, this facility is a hub for specialist engineers wishing to work in subsea and renewable energy engineering technologies. Students studying here can take advantage of welding and fabrication facilities, industry standard CAD software (SolidWorks and Autodesk), and the world's most immersive Hybrid Reality Wind Turbine training system.

scan
me



Take a tour
of the Energy
Academy.



Aviation Academy

Located just off the runway at Newcastle International Airport, this amazing facility consists of an impressive 12,000m² aircraft hangar. Aerospace engineering students train on real aircraft such as a BAE Jetstream 31, Piper Aztec and BAC 1-11 Jet Provosts. Aviation operations students are also based here, learning essential cabin crew skills on our Boeing 737.



The highlight of studying at Newcastle College is the friends you make and the tutors. You know your confidence is going to grow being around people who support and want the best for you.

Olivia Williams
Aviation Operations student



Trevelyan

Business, digital technologies, sport and law, policing and protective services students are based here. Students can take advantage of refurbished classrooms and dedicated facilities. There is also a canteen and social space on the ground floor.

scan
me



More than just
a course!



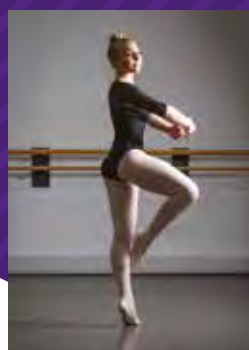
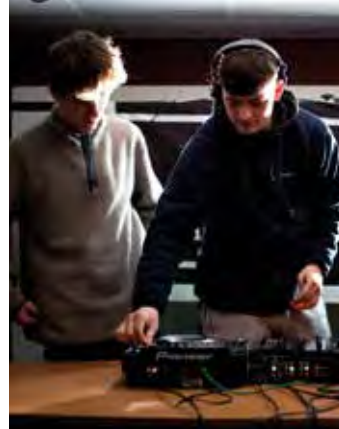
Performance Academy

One of the best facilities in the North East for those who have a passion for music, performance and production arts. Housed within the building is a 200 seat theatre, 10 recording studios with both digital and analogue facilities, dance studios, performance venues, TV studio and editing suite, radio station and record label.

scan
me



Take a tour of
the Performance
Academy.



Rail and Civil Engineering Academy

The Academy in Gateshead has been developed to cater for all aspects of rail and civil engineering. Rail students benefit from electronic signalling systems, overhead line systems and infrastructure maintenance. Civil engineering students have access to a range of dedicated classrooms, facilities and instruments including total stations specific to civil engineering.



ON
COURSE
FOR
SUCCESS.

I was glad of the change Newcastle College brought to my education. The environment suits me better and I enjoy coming to college.

Tait McKenna
Rail Student



Automotive Academy

Our Automotive Academy boasts a light vehicle maintenance facility with electronic diagnostic test equipment (Snap-On), tyre and exhaust replacement bays, computerised paint mixing (water-based) and spray painting booth (Junair). Vehicle body repair equipment includes MIG and TIG welding sets, computerised vehicle measuring and straightening jigs (Car-o-Liner), mobile air conditioning rigs and a Hunter HawkEye Wheel Alignment system.



See inside the Automotive Academy.



Life as an automotive student.



Rutherford

Rutherford is home to our manufacturing engineering courses. This is the place to develop your engineering skills across a range of disciplines. The building includes extensive engineering workshops, Computer Aided Design suites and 5-axis CNC milling machine, the largest in any education establishment in the UK.



Life as an engineering student.



Lifestyle Academy

This Academy is home to students studying hair and beauty, travel and hospitality. Students can develop their skills in our commercial facilities such as The Retreat – our on-site hair and beauty salon and The Chefs' Academy – our 'Highly Commended' AA College Rosette restaurant.



Take a tour of Lifestyle Academy.



Be part of shows and competitions.

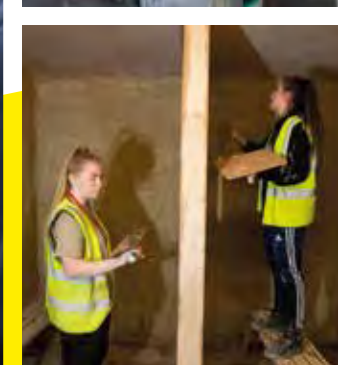


Construction Academy

This is the place to learn bricklaying, plastering, roofing, painting and decorating, carpentry and joinery, plumbing and electrical installation. The Academy offers large workshops where construction students can hone their skills in an environment which replicates a construction site.



Life as a construction student.



HELP WITH COSTS

IF YOUR HOUSEHOLD INCOME
IS LESS THAN £30,000*
YOU MAY QUALIFY FOR:

FREE meals

You may be entitled to a meal on the days that you are timetabled to attend college. This is allocated to your student number and is accessible via the cashless system, making it easy for you to claim your free meal in one of our many food outlets throughout the College.

FREE equipment and trips

As part of your course, you may benefit from equipment and trips to help with your learning.

For some courses there may be associated costs and depending on your circumstances you may be entitled to help towards these.

For full details contact our team
on 0191 200 4000 or visit
www.ncl-coll.ac.uk/financial-support

* SUBJECT TO CERTAIN CRITERIA. TO FIND OUT IF YOU ARE ELIGIBLE, PLEASE SPEAK TO OUR STUDENT SERVICES TEAM.

PLEASE NOTE: FINANCIAL SUPPORT IS BASED ON ACADEMIC YEAR 2021/22 AND IS SUBJECT TO CHANGE FOR 2022/23



› Travel to and from College

FREE TRAVEL PASS

WORTH UP TO £1,500

If you are eligible, this pass will cover you for the whole academic year. The College works closely with Go North East, Nexus, Stagecoach and Arriva to ensure you benefit from a travel package, which is best suited to your location. To qualify you must meet one of the following criteria:

- 1** living at home with a household income of under £30,000, subject to certain criteria.
- 2** in care or a care leaver.
- 3** receiving Income Support, or Universal Credit because you are financially supporting yourself or financially supporting yourself and someone who is dependent on you and living with you such as a child or partner.
- 4** receiving Disability Living Allowance or Personal Independence Payments in your own right as well as Employment and Support Allowance or Universal Credit in your own right.

Your route to College

Did you know?

Many of our students do a trial run of their journey to college. Why not try it out to see which route would be best for you?

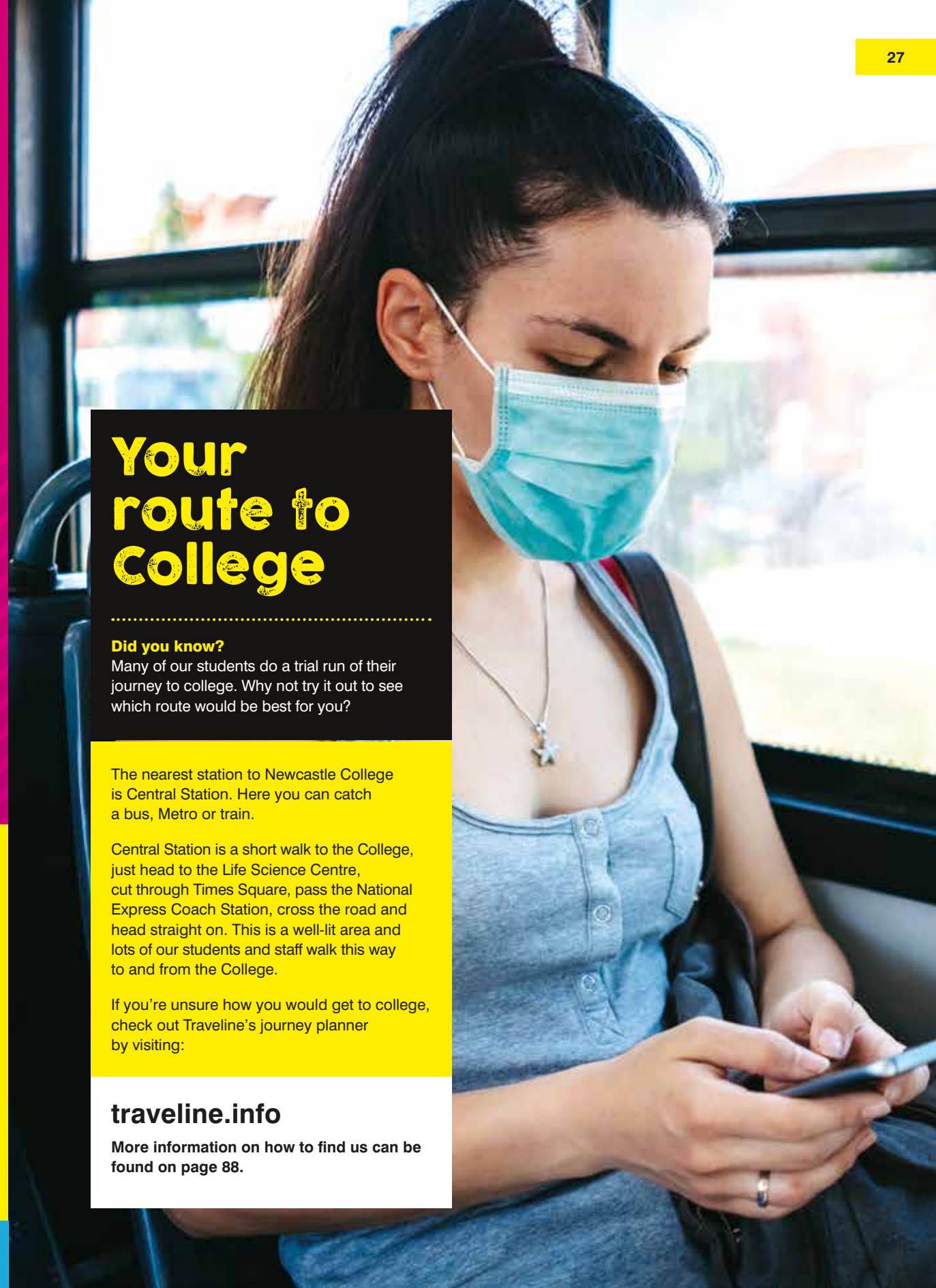
The nearest station to Newcastle College is Central Station. Here you can catch a bus, Metro or train.

Central Station is a short walk to the College, just head to the Life Science Centre, cut through Times Square, pass the National Express Coach Station, cross the road and head straight on. This is a well-lit area and lots of our students and staff walk this way to and from the College.

If you're unsure how you would get to college, check out Traveline's journey planner by visiting:

traveline.info

More information on how to find us can be found on page 88.



student support



When you study with us you can access a range of support to help you succeed. Our award-winning Central Support Service is here to provide advice and support to all students.

Learning Support

Our support services are here to offer you disability specific advice, guidance and signposting when you need it. We are committed to putting reasonable adjustments in place to remove barriers to learning and to ensure you have full access to your chosen curriculum. The team can provide a range of support including Communication Support Workers, Learning Support Assistants, help with personal care, access plans and much more.

Assistive Technology

The Assistive Technology Team can provide you with equipment, software and training should you have any additional support needs. The team is also home to the Transcription Service which can provide you with expert conversion of course materials, exam papers and other documents into a variety of different formats such as Braille, large print and audio.

Pastoral Support

The Pastoral Support Team will have contact with you at some point during your time at college. We aim to develop and maintain mentoring relationships which contribute to your emotional and physical wellbeing. The team work with you in a number of ways including providing drop-in sessions, group work, one-to-one support and cover areas such as health and wellbeing, employability skills, academic study skills, personal safety and literacy and numeracy.

Library and Learning Spaces

The Library and Learning Spaces Team aim to promote independent learning and provide a productive and vibrant environment for you to work, study and research in. The team supports the main library and independent learning spaces around campus, where we are on hand to offer you individual help with research, study, referencing and access to thousands of resources.

Mental Health and Wellbeing

As individuals we all have worries and anxieties and sometimes these can increase and become more frequent than usual. Good mental health and wellbeing is important to Newcastle College. That's why we have Youth Mental Health First Aiders and other staff to support our learners.

We are also partnered with the Fika Mental Fitness app, which is free for all of our students to access. On the app you can complete short mental fitness exercises that can improve your confidence, motivation and focus.

Our aim is to ensure we support and respond to your mental health, emotional and social needs whilst you are studying your course with us. We will work with you to put the most appropriate support together and ensure reasonable adjustments are available and in place whilst you are at college.

GET IN TOUCH

Talk to our Central Support Service on

0191 200 4189

or email

css@ncl-coll.ac.uk

to discuss your support needs
and how we can help.

COURSE LEVELS

It can be hard to know which course and what level to start on. We have a course for everyone, regardless of your current grades, ability or ambitions. Once you have made an application to study with us, we'll review your application and work with you to ensure you start on a course that is best suited to you. Once you successfully complete that course you can progress onto the next level with us.

Full-time courses

The courses within this guide are studied full-time, requiring you to be in college most days. You'll focus on one core subject, and English and maths if relevant, learn in a hands-on way and be assessed in different ways. See **page 10** for what makes up your programme of study.

Apprenticeships

Why not consider an apprenticeship? With an apprenticeship you'll be in full-time employment which you'll combine with off-the-job training either in college or in the workplace. Check out **page 42** for further information.

Which level should I choose?

The level you'll study at usually depends on the grades that you achieve at GCSE. If you don't get the grades you'd hoped for, there's no need to worry. No matter what level you start at, if you successfully complete your course you can then progress to the next level.

★ When you apply please provide us with your predicted GCSE grades.

Level you'll typically begin studying at	Number of GCSEs required to study	Still unsure which level is right for you?
Level 3	5 GCSEs at grade 4 or above	If you are still unsure which level to apply for come along to one of our Open Events to speak to our tutors or student advisors. Alternatively, call Student Services on 0191 200 4000
Level 1 or 2	4 GCSEs at grade 3 or below	

PLEASE NOTE THAT SOME COURSES MAY REQUIRE GCSE GRADES IN SPECIFIC SUBJECT AREAS E.G. MATHS, ENGLISH AND SCIENCE, WHILE OTHERS WILL REQUIRE YOU TO START AT LEVEL 1 TO LEARN THE TECHNICAL CRAFT OF YOUR CHOSEN SUBJECT.

Course levels within this guide are indicated as follows:

L1 → **LEVEL 1**

L2 → **LEVEL 2**

L3 → **LEVEL 3**

DID YOU KNOW?

When you successfully complete your Level 3 course with us you'll be automatically offered a place at Newcastle College University Centre on one of our degree courses!

The importance of English + maths

Good levels of English and maths at grade 4 GCSE or higher are essential for all job roles. At Newcastle College we place English and maths development at the heart of your Programme of Study and highlight the relevance of these throughout your time on the course. You will continue to develop these skills so you are confident and competent in achieving the required level to progress.

If you don't already have a grade 4 or above in these subjects, your timetable will include English and maths lessons and you must attend these in order for you to successfully complete your course.

All job roles use English and maths skills:

- ★ Car mechanics need to provide quotes and raise invoices.
- ★ Hairdressers need to be able to calculate prices and order stock.
- ★ Chefs need to be able to measure out ingredients and price up menus.
- ★ All workers need to be able to communicate effectively both verbally and in writing.

How to apply

Once you have an idea of what you'd like to study we recommend you make your application as soon as possible to secure your place. We'll then send you all the information you need about the course and all the exciting things you can look forward to when studying with us. This will help you prepare for when you start your course with us.



1 Discover your options

- Visit www.ncl-coll.ac.uk
- Visit an Open Event (held monthly)
- Contact us on Facebook or Twitter
- Call us on **0191 200 4000**

2 Make your application

You can search for your course and apply online via our website, it only takes around ten minutes to complete. If you need help completing your application you can join an Open Event or speak to our Student Services Team who can support you through it.

3 With you every step of the way

Once you've made your application we will be in touch to keep you updated with your application, as well as news, competitions and things you can look forward to.

Looking for advice?

- Join an **Open Event** to speak directly to tutors and get course information.
- Speak to our Student Services Team on **0191 200 4000**
- or email them at enquiries@ncl-coll.ac.uk for any career advice you need.

Applying for the right course for you

Choosing which course to study can be a hard decision, but at Newcastle College we encourage you to explore your interests and discover which course will help you to reach your career goals. Don't worry; you are not alone. We are here to discuss any questions you may have or, if you need career advice, we can support with that too. We want you to have a great experience whilst at Newcastle College and a big part of that will be the course you choose to study, so take your time and make sure it's the right course for you.

**SECURE YOUR PLACE FOR
SEPTEMBER 2022**

PROGRESSION OPPORTUNITIES

AT NEWCASTLE COLLEGE

Your journey with us does not have to end after you complete your studies. We guarantee a place at Newcastle College University Centre when you successfully complete your Level 3 course.

As a further education student, you might not be thinking about moving to the next step just yet. However, it is always good to know what your future could bring and, with Newcastle College, we can help you take that next step into higher education.

Many of our students choose to Step Up to a degree at Newcastle College University Centre. Once they successfully complete their Level 3 course, they choose to progress their studies to gain enhanced skills and knowledge before they pursue their chosen career.

We have over 60 degree courses to choose from with excellent student support and industry-standard facilities.

You can find out more about Steppin' Up at Newcastle College at www.ncl-coll.ac.uk/apply-now/steppin-up



STEPPIN' UP

“ SCOTT'S STORY

Scott Dickinson progressed from Level 3 Access to HE to Level 6 Sport and Exercise Rehabilitation.

"I'd studied an Access to HE course at Newcastle College and during that I saw that the standard of teaching was really good and I didn't want to move away or study anywhere else.

"The teaching and learning here is really focused because of smaller classes so if you have any issues or problems there's a tutor there to support you."



Take a sneak peek into student life at our University Centre.



**NEWCASTLE
COLLEGE**
UNIVERSITY
CENTRE

A DEGREE WITH A DIFFERENCE

You might not be thinking about your future just yet, but at Newcastle College you don't have to finish your studies when your Level 3 course is over. You can stay at our University Centre to study a degree!



Our University Centre offers you a real alternative to university where you can study university-level degree courses that have been designed in collaboration with employers. You'll be taught in smaller class sizes in specialist teaching facilities, and have opportunities to work with employers to develop your professional skills.

What can I study?

We offer degrees in most of the subject areas in which you can study a Level 3 course. From Art and Design to Business, Computing, Engineering and Sport, our degrees will take you to that next level. You'll get to study in fantastic facilities and learn from our industry-experienced tutors.

What types of degrees are on offer?

You can study a CertHE (Level 4), Foundation Degree (Level 5), Honours Degree and Honours Degree (Top-Up) (Level 6) at Newcastle College University Centre. We offer Degree Apprenticeships too!

Facilities just for you

When you study a degree at the University Centre you'll get to access the exclusive facilities that are just for our higher education students! This includes the HE Hub which has a bar serving hot food and drinks, as well as having plenty of social space for hanging out with friends or tackling that group project.

You'll also get to use Parsons floor 10 where you will find your own break-out area and computer suite with the latest specialist software. Relax, unwind and take in the stunning views across Newcastle!

Student Life

At Newcastle College University Centre, we think it is really important that our degree students get to experience all aspects of student life. There are plenty of ways for you to get involved in activities on campus when you study a degree!

Students' Union

When you enrol onto a degree course at Newcastle College University Centre, you automatically become a member of Newcastle College University Centre Students' Union, an affiliated member of the National Union of Students (NUS). You can apply for an NUS Totum card entitling you to a number of fantastic discounts in shops, restaurants and services nationwide. The Students' Union has a range of officer roles available to you as a student. These officers help with the running of the Students' Union as a fair and exciting organisation and represent you around LGBT+ issues, disabilities, higher education and welfare.

Student Leaders

Our Student Leaders Programme gives our degree students the opportunity to undertake research or similar activities within your discipline and across the University Centre. It also means you are able to make a positive impact on the student experience and contribute to the student community, all whilst gaining valuable employability skills and often a generous bursary.

Support for degree students

Fika

We have partnered with mental fitness app Fika, which is a tool you can use to stay motivated, productive, focused and connected as a student. This free app is available for all students at Newcastle College University Centre.

Learning Mentors

Our Learning Mentors can provide you with one-to-one support for your mental health and wellbeing and can also signpost you to other services like counselling. We pride ourselves on providing our students with exceptional support throughout their studies.

Higher Education Support Team (HEST)

Our Higher Education Support Team (HEST) provides support, advice and guidance for students with a wide range of learning needs. We want to make sure you have the best possible experience whilst you're a student with us, and HEST is here to help.



INFORMATION FOR PARENTS AND GUARDIANS

If your son, daughter, or someone you care for, is considering their next steps with Newcastle College, you can rest assured that we're the right choice. Our priority is helping every one of our students to aim high, achieve their goals and progress beyond them.



The College's first-class facilities, experienced tutors and relationships with employers across the region are at the core of everything we do. They are the foundation for providing the right support and skills for our students to excel. Our campus in the heart of the city is open and welcoming and provides a brilliant student experience. We're delighted that we could be the next step in your young person's journey, and we think that as a parent, guardian or carer, you're a big part of this, so you'll be with us every step of the way.

Your involvement

Coming to college is an exciting step into the real world. A new campus, a new course and new friends. We like to think we help all of our students gain their independence while they're with us. We expect them to turn up, be on time, work hard and strive to be their best every day.

We also know that you share our goals of wanting our students to succeed. We promise to keep you informed and up-to-date on progress and concerns, but we trust our students to do the work to obtain their goals.

Keeping track of progress

All of our students are assigned a Personal Tutor, who will help them to develop individual targets and progression plans. We encourage our students to take responsibility for their own success and to focus on progressing to the next step. We'll support them in any way we can and they'll meet regularly with their Personal Tutor to help keep them on track.

You can support them too, by having access to the online Student Progress Tracker, as well as direct contact with Personal Tutors if you want to discuss any concerns.



A Levels and vocational study – what's the difference?

College programmes are broadly equivalent to A Levels, it's just a different route. They focus more on hands-on and practical skills rather than written assessments, which can be really beneficial when it comes to gaining experience and finding employment. They also train students up in specialist areas, so they can focus on the area that really interests them. In fact, the government are keen to develop even more vocational courses, recognising the benefits of hands-on learning. They are still awarded UCAS points, so students can still progress to university if they succeed on their course.

If you are interested in studying A Levels, Newcastle Sixth Form College is a dedicated A Level provider situated within our Rye Hill campus. Visit www.newcastlesixthformcollege.ac.uk to learn more.

Any questions?

Join an Open Event to speak to tutors, get course information and see what the campus has to offer.

www.ncl-coll.ac.uk/events



FOUNDATION LEARNING

Foundation Learning courses at Newcastle College offer you a route to the career of your choice. As part of the course you will have the opportunity to study a vocational subject one day per week which will help in the development of English and maths. These are ideal entry level courses to set you up for further study at Newcastle College.



This is a progression-focused course which focuses on the development of English and maths with the aim to boost confidence and self-esteem. As part of the course you will have the opportunity to study a vocational subject one day per week which will help in the application of English and maths. You are able to choose from art, construction, childcare, health and care, music and more.

The intent of these courses is to prepare you for further study. Our progression pledge is that learners who successfully complete their vocational Diploma, Level 1 English and maths alongside 95% attendance will progress onto the next vocational level within Newcastle College.

Access to ESOL (English for speakers of other languages)

If English is not your first language, the ESOL fast-track course will help you to improve your reading, writing, listening and speaking in English. Improving your English will make it easier to progress with further study and achieve further qualifications at Newcastle College.

ON COURSE FOR THE NEXT STEP.

On completion of your course, your Personal Tutor will work with you to help you with your future choices. There are plenty of vocational courses for you to choose from, depending on your area of interest.

scan
me



for information
on foundation
learning courses.



APPRENTICESHIPS

Apprenticeships are a great way to get yourself into the world of work whilst studying for a qualification. It means you can earn while you learn. Here at Newcastle College we know that the next step might seem daunting, but our experienced team is here to guide you along the way.



Where will I study?

During an apprenticeship you will be employed within a business doing a real job, whilst being supported through nationally accredited training delivered by Newcastle College. Our apprenticeships will support you with building a range of skills you can develop throughout your career.

Which level will I study?

Apprenticeships are available to anyone aged 16 and over and are offered at different levels. You'll start on a level relevant to your experience and skill level. Apprenticeships take a minimum of 12 months to complete and you'll split your time between industry and being at college.

What areas can I do an apprenticeship in?

Automotive

Motor Vehicle Service and Maintenance Technician
Vehicle Damage Paint Technician
Vehicle Damage Panel Technician
Autocare Technician

Business

Assistant Accountant
Accounts/Finance Assistant
Customer Service Practitioner
HR Support
Team Leader/Supervisor
Chartered Management Degree Apprenticeship
Business Administrator

Digital

Digital and Technology Solutions

Construction

Bricklaying
Painter and Decorator
Plumbing and Domestic Heating Technician
Plasterer
Roofing
Carpentry and Joinery

Hair

Hair Professionals
Barbering

Hospitality

Commis Chef
Chef de Partie

Engineering

Maintenance and Operations Engineering Technician
Plate Welder
Rail Engineering

Health

Dental Nurse

Science

Laboratory Technician
Laboratory Scientist

TOP TIP

Get interview-ready by making an appointment with our Learner Engagement Team who can give you tips, advice and interview techniques. Call us today on **0191 200 4781** or email apprenticeships@ncl-coll.ac.uk

scan
me



for information on apprenticeships.

Be part of our annual Apprenticeship Awards.



Apprentice aims high after winning Apprentice of the Year.

ART AND DESIGN

Our exciting courses will put your creativity to the test to prepare you for your future career. They'll combine practical work, theory and work-related projects to give you the expertise you need to succeed. Benefit from opportunities to showcase your work through live-briefs and exhibitions and build a portfolio of work to help you progress into further study or employment.

courses

Art and Design	L1 L2 L3
Art and Design Subsidiary Diploma	L3
Fashion, Business and Retail (UAL)	L3
Fashion and Textiles	L3
Foundation Diploma (UAL) Art and Design	L3
Interior and Architectural Fundamentals	L3

Many of our art and design courses require you to hold a qualification in an art-based subject and be able to provide a portfolio of work which demonstrates your skills. When you apply you'll be invited in to meet course tutors and to show your artwork.

What's next?

Once you have completed your Level 3 course you can stay at Newcastle College to study a degree at the University Centre! We've got a range of degrees to choose from in Art and Design, including Fine Art, Fashion, Interior Design, Textiles and Product Development.



Where will I study?

You'll have access to fully-equipped design studios, inspiring drawing, painting, sculpture studios and Mac suites. Our dedicated Art School in Mandela Building boasts wood and metal workshops with CNC and laser cutting facilities, a first-class screen-printing studio with fabric printing facilities and modern fashion, sewing and textile workshops, plus a gallery space.

Which level will I study?

We have a course for everyone, regardless of your qualifications. Take a look at **page 30** for details on entry requirements and the level you'll begin at.



scan
me

for information on
art and design
courses.



on course to be...

- ★ an Architect
- ★ a Curator
- ★ a Fashion Buyer
- ★ a Fashion Designer
- ★ a Fine Artist
- ★ an Illustrator
- ★ an Interior Designer
- ★ a Textile Designer
- ★ a Teacher
- ★ a Visual Artist
- ★ a Visual Merchandiser.

AUTOMOTIVE

If you have a passion for cars and want to learn about how they work, our automotive courses will put you in the driving seat for a career in the automotive industry. You'll learn from industry experienced tutors and gain hands-on experience in our Automotive Academy, to get the skills you need to work in garages, dealerships or workshops.

courses

Light Vehicle Maintenance and Repair Principles

L2 L3

Vehicle Accident Repair (Multi-Skilled)

L1 L2

Vehicle Systems Maintenance and Repair

L1 L2

Typically you'll begin studying at Level 1 or Level 2 and progress up to Level 3. If you already hold an automotive qualification from another school or college you may be able to enter directly onto a Level 3 course.



Where will I study?

Our dedicated Automotive Academy includes electronic diagnostic test equipment (Snap-On), computerised paint mixing and spray painting booth (Junair). Other equipment includes MIG and TIG welding sets, computerised vehicle measuring and straightening jigs (Car-o-Liner), mobile air conditioning rigs and a Hunter HawkEye Wheel Alignment. Some theory sessions will take place at our main campus, a short walk from the Automotive Academy.

Which level will I study?

We have a course for everyone, regardless of your qualifications. Take a look at **page 30** for details on entry requirements and the level you'll begin at.



scan
me



for information
on automotive
courses.



ON
COURSE
FOR
SUCCESS.

I had the choice between A Levels or college but I was so impressed with the Automotive Academy at Newcastle College I knew I had to come here. College gives you the freedom of choosing how you learn so I get to study in a way that helps me to get the best out of my learning.

Rebecca Gibson

L3 Vehicle Accident Repair (Multi-Skilled)

on course to be...

- ★ an Automotive Technician
- ★ a Body Repair Technician
- ★ a Paint Repair Technician
- ★ a Refinisher
- ★ a Service Manager.

AVIATION

As an aviation student, you'll be based at our award-winning Aviation Academy and have a learning experience like no other. Work alongside industry professionals and gain work experience whilst learning the skills you need for a high-flying career in the sector, whether you want to be an aircraft engineer, member of cabin crew, or working in a variety of aviation operational roles on the ground.

courses

Aviation (Operations and Cabin Crew)

L2

Aviation Operations

L3

Aeronautical Engineering

L3

When you apply to study at Level 3 at the Aviation Academy you'll begin on a Subsidiary Diploma and in your second year progress on to the full Diploma.

What's next?

Once you have completed your Level 3 course you can stay at Newcastle College to study a degree at the University Centre! We've got a range of degrees to choose from in Aviation, including Aircraft Maintenance Engineering and Airline and Airport Management.



Where will I study?

Our Aviation Academy, which is based at Newcastle International Airport, includes a 12,000m² aircraft hangar, multiple training aircraft including a BAE Jetstream 31, Piper Aztec, Boeing 737 and commercial aircraft for cabin crew training. You'll also have access to an avionics laboratory, an electronics training suite and an aerospace, mechanical and airframe repair workshop.

Which level will I study?

We have a course for everyone, regardless of your qualifications. Take a look at **page 30** for details on entry requirements and the level you'll begin at.



scan
me

for information
on aviation
courses.



on course to be...

- ★ an Aircraft Designer
- ★ an Aircraft Maintenance Engineer
- ★ an Airline or Airport Manager
- ★ an Airport Security Officer
- ★ a Cabin Crew Member
- ★ a Ground Handling Officer.

BUSINESS

Our business courses will allow you to explore all of the key areas which make a business run smoothly, from HR to finance, marketing to retail and project management to business change. You'll also develop your entrepreneurial skills, perfect if you'd like to set up your own business in the future. You'll learn from tutors who have worked in industry and you'll work with local employers supporting them on real projects to gain real experience.

courses

Business Enterprise

L2

Skills for Business

L2

Business

L3

When you study our Level 3 in Business you'll begin on either a Diploma or an Extended Diploma, depending on the grades you achieve at GCSE.

What's next?

Once you have completed your Level 3 course you can stay at Newcastle College to study a degree at the University Centre! We've got a range of degrees to choose from in Business, including Business Management.



Where will I study?

You'll be based in our Trevelyan building at our Rye Hill Campus, just at the edge of Newcastle City Centre. There are dedicated learning zones and pop-up shops on campus for you to use to help develop your entrepreneurial skills.

Which level will I study?

We have a course for everyone, regardless of your qualifications. Take a look at **page 30** for details on entry requirements and the level you'll begin at.



scan
me

for information
on business
courses.



As a business
student you will
take part in our
annual Industry
Week!



on course to be...

- ★ an Accountant
- ★ a Business Administrator
- ★ a Customer Service Coordinator
- ★ a Finance Manager
- ★ a Marketing Executive
- ★ a Personal Assistant
- ★ a Project Manager
- ★ a Retail Manager
- ★ a Secretary
- ★ a Visual Merchandiser.

CHILDCARE

If you want a career encouraging children and young people to learn and develop through play, then childcare is for you. You'll gain practical experience in Early Years settings, learning how to look after children safely. You'll also help them to learn and develop using activities and interactions with others, which will start you on your journey towards a rewarding career.

courses

Caring for Children

L2

Childcare and Education

L3

Early Years Practitioner

L2

Our childcare courses require DBS clearance. When you apply you'll be given details on how to make this application.

What's next?

Once you have completed your Level 3 course you can stay at Newcastle College to study a degree at the University Centre! We've got a range of degrees to choose from in Childcare, including Children and Young People.



Where will I study?

You'll be based at our Rye Hill Campus in the heart of Newcastle and will benefit from three real-work environment simulation rooms for babies, toddlers and reception children, including baby care area, play facilities and kitchen areas, as well as a multi-sensory room for students learning to work with children with supported care needs.

Which level will I study?

We have a course for everyone, regardless of your qualifications. Take a look at **page 30** for details on entry requirements and the level you'll begin at.



scan
me

for information
on childcare
courses.



on course to be...

- ★ a Childminder
- ★ a Crèche Assistant
- ★ an Early Years Educator
- ★ a Family Support Worker
- ★ a Nanny
- ★ a Nursery Assistant
- ★ a Primary School Teacher
- ★ a Social Worker.

COMPUTING

Our computing courses focus on hands-on learning to equip you with the skills and understanding to enter the fast-paced and ever-growing digital tech industry. You'll benefit from great facilities and get to grips with a range of programmes and hardware to enhance your knowledge. Plus, you'll gain practical experience with digital employers and collaborate with students and businesses on exciting projects. Whether you want to specialise in cyber security, web design or gaming, there's a course to help you succeed.

courses

Digital Games Design and Development **L3**

Esports **L2 L3**

Information Technology **L2 L3**

You will begin studying on either a level 2 or level 3 course depending on your grades. Once you successfully complete your course you can progress to the next level in computing.

What's next?

Once you have completed your Level 3 course you can stay at Newcastle College to study a degree at the University Centre! We've got a range of degrees to choose from in Computing, including Games Technologies, Software Engineering and Networking and Cyber Security.



Where will I study?

Where will I study? You'll be based at our Rye Hill Campus and have access to a dedicated IT suite for game rendering and graphics production, network labs with Cisco and Microsoft technologies, IT pods and areas for vendor qualification training. You'll benefit from recent investment into audio visual facilities, specialist software and hardware to support applications and mobile apps development, computer forensics and cyber security.

Which level will I study?

We have a course for everyone, regardless of your qualifications. Take a look at **page 30** for details on entry requirements and the level you'll begin at.



**scan
me**

for information
on computing
courses.



Learn about
our brand
new Esports
course.



on course to be...

- ★ an IT Technician
- ★ an Operations Manager
- ★ a Network Administrator
- ★ a Project Manager
- ★ a Software or Games Developer
- ★ a Systems Development Manager
- ★ a Security Analyst
- ★ a Security Engineer
- ★ a Web Designer.

CONSTRUCTION

If you love hands-on learning and want to develop skills that will always be in high-demand, a career in construction could be for you. From plumbing, plastering, painting, to carpentry and joinery, electrical installation, bricklaying and roofing, a construction course at Newcastle College can help you craft your future.

courses

Bricklaying	L1	L2	
Carpentry and Joinery	L1	L2	
Electrical Installation	L1	L2	L3
Painting and Decorating	L1	L2	
Plastering	L1	L2	
Plumbing	L1	L2	
Roof Slating and Tiling	L2		
Site Supervision	L3		

Typically you will begin studying on a level 1 course and once you successfully complete your course you can progress to the next level in construction.



Where will I study?

You'll be based in the Construction Technical Academy at our Rye Hill Campus. This facility is the place to learn bricklaying, plastering, roofing, painting and decorating, carpentry and joinery, plumbing and electrical installation. It houses large workshops which replicate different construction sites and real-working environments to help you get to grips with the construction world.

Which level will I study?

For most of our construction courses you'll begin studying at Level 1 and progress to Level 2. If you already hold a construction qualification from another school or college you can enter directly onto a Level 2 course. For Electrical Installations, you may begin on a Level 2 course, subject to your GCSEs and skills assessment, and progress onto Level 3 Advanced Technical Diploma.



scan me
for information
on construction
courses.



**ON
COURSE
FOR
SUCCESS.**

When I started at the College I felt happy and nervous as I didn't know what to expect. There is a friendly atmosphere at the College and my confidence has grown dramatically since starting my course. I have a travel pass to support with getting to and from college and free college meals. This help has been great as it means I don't have to worry about these costs.

Paige Ainsley
Construction Student

on course to be...

- ★ a Bricklayer
- ★ a Carpenter
- ★ an Electrician
- ★ a Joiner
- ★ a Painter and Decorator
- ★ a Plumber
- ★ a Roofer.

DIGITAL ARTS

Our digital arts courses help you explore and develop your creativity, putting it to the test with practical projects and briefs from employers. This hands-on approach ensures you have every opportunity to demonstrate your creative talent through student collaboration, exhibitions, employer projects and workshops, setting you up for your future career in the creative industries. You'll learn from experienced artists and designers using state-of-the-art equipment to help you perfect your technique and reach your potential.

courses

Animation and Illustration **L3**

Creative Media Production **L3**

Digital Arts **L1 L2**

Graphic Design **L3**

Photography **L3**

Many of our digital arts courses require you to provide a portfolio and demonstrate your skills. When you apply you'll be invited in to meet course tutors and show your work.

What's next?

Once you have completed your Level 3 course you can stay at Newcastle College to study a degree at the University Centre! We've got a range of degrees to choose from in Digital Arts, including Animation, Illustration, Photography and Creative Video Content.



Where will I study?

You'll be based at our Rye Hill Campus, with access to a large industry standard photography studio, including tethered capture and darkrooms. There are also screen print studios, Mac suites, an animation, games and visual FX workshop with rendering farm and a TV studio with Black Magic 4k cameras and green screen facilities.

Which level will I study?

We have a course for everyone, regardless of your qualifications. Take a look at **page 30** for details on entry requirements and the level you'll begin at.

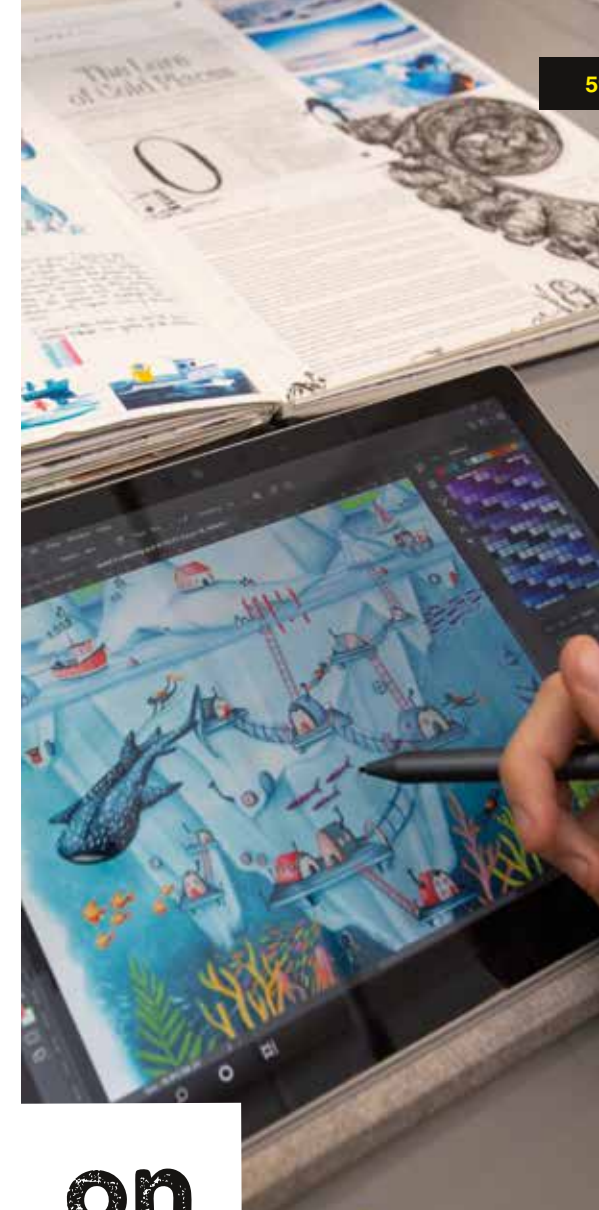


scan me

for information on digital arts courses.



Students enter prestigious annual competitions.



on course to be...

- ★ a 2D and 3D Animator
- ★ a Graphic Designer
- ★ a Photographer
- ★ a Producer or Director
- ★ a Scriptwriter
- ★ a Video Producer
- ★ a Web Designer.

HAIR AND BEAUTY

If you enjoy helping others to look and feel great, a career in the hair and beauty industry might just be for you. You'll learn from qualified practitioners and develop your practical skills using industry-standard products and tools within our commercial hair and beauty salon, The Retreat. Work placements offer you the chance to gain real-work experience and learn more about what it's like to work in the industry.

courses

Barbering	L3
Beauty	L1 L2 L3
Colour Technicians	L3
Hairdressing	L1 L2 L3
Hair Techniques	L2
Makeup (Fashion and Media)	L2 L3

For the majority of our hair and beauty courses you will begin studying at Level 1 or Level 2 and progress up to Level 3. If you already hold a Level 2 qualification from another school or college you may be able to begin at Level 3.

What's next?

Once you have completed your Level 3 course you can stay at Newcastle College to study a degree at the University Centre! We've got a range of degrees to choose from in Hair and Beauty, including Advanced Skin Techniques, Make-Up and Spa Management.



Where will I study?

You'll be based in the Lifestyle Academy at our Rye Hill Campus where you will benefit from working in The Retreat, our commercial hair and beauty salon and nail bar which is open to the public. Plus, you'll have access to our beauty and holistic therapy training floor, a Centre for Excellence for the International Institute for Anti-Ageing.

Which level will I study?

We have a course for everyone, regardless of your qualifications. Take a look at **page 30** for details on entry requirements and the level you'll begin at.

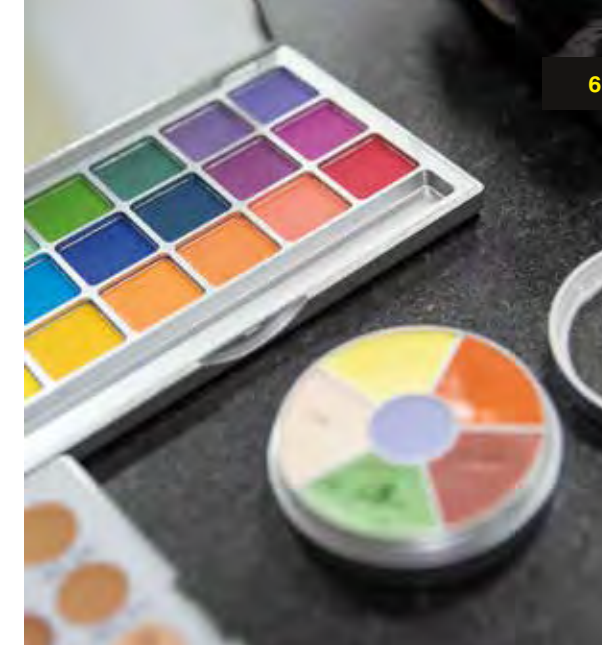


scan me

for information on hair and beauty courses.



You'll have the opportunity to take part in hair and beauty shows.



scan me

Students pay tribute to NHS.



on course to be...

- ★ a Beauty Receptionist
- ★ a Beauty Therapist
- ★ a Colour Technician
- ★ a Hairdresser
- ★ a Make-Up Artist
- ★ a Salon or Spa Manager
- ★ a Spa Therapist.

HEALTH AND CARE

Our health and care courses focus on giving you the practical experience and understanding of what it takes to work in the health sector. Learning from experienced tutors, you'll develop your practical skills in our dedicated health care facilities, including simulated hospital wards and science labs. Work placements will help you develop your understanding of current social issues as well as gain the skills and knowledge you need to work in care, social care or within a medical profession.

courses

Health Academy L3

Health and Social Care L1 L3

Health Studies L2

Our health and care courses require DBS clearance. When you apply you'll be given details on how to make this application.

What's next?

Once you have completed your Level 3 course you can stay at Newcastle College to study a degree at the University Centre! We've got a range of degrees to choose from in Health and Care, including Counselling, Healthcare Practice and Public Health.



Where will I study?

You'll be based at our Rye Hill Campus and will benefit from a floor of dedicated facilities, including two fully functioning hospital simulation wards, operational hospital reception, intensive care unit, paediatric ward and scrub room. A two-floor flat houses a working kitchen, bedroom and bathroom with hoist, to help you understand requirements for domiciliary care.

Which level will I study?

We have a course for everyone, regardless of your qualifications. Take a look at **page 30** for details on entry requirements and the level you'll begin at.



scan me

for information on health and care courses.



Life as a health and care student.



on course to be...

- ★ a Carer
- ★ a Counsellor
- ★ a Family Support Worker
- ★ a Midwife
- ★ a Nurse
- ★ a Paramedic
- ★ a Social Worker
- ★ a Youth Worker.

HOSPITALITY AND CATERING

If you have a passion for food and hospitality, our courses will help you perfect your skills to become a top chef or deliver exceptional front-of-house service. Learn from an expert catering team in industry-standard kitchens and put your skills to the test in our student run bistro and fine-dining restaurant, The Chefs' Academy. Outside of the classroom, you could take part in masterclasses with renowned chefs, undertake a work placement in a local restaurant, or even take part in national competitions.

courses

Introduction to Hospitality Industry

L1

Professional Cookery

L1 L2 L3

Professional Patisserie and Confectionery

L2 L3

You'll begin on either a Level 1 or 2. In your second year you'll have the opportunity to progress to the next level, up to a Level 3 in Hospitality, Cookery or Patisserie and Confectionery.

What's next?

Once you have completed your Level 3 course you can stay at Newcastle College to study a degree at the University Centre! We've got a range of degrees to choose from in Hospitality and Catering, including Culinary Arts and Hospitality Management.



Where will I study?

You'll be based in the Lifestyle Academy at our Rye Hill Campus and will benefit from five professional training kitchens with industry standard equipment. You'll develop your skills working in our healthy eating bistro or à-la-carte restaurant, The Chefs' Academy, a 'Highly Commended' AA College Rosette facility open to the public.

Which level will I study?

We have a course for everyone, regardless of your qualifications. Take a look at **page 30** for details on entry requirements and the level you'll begin at.

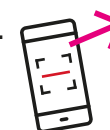


scan me

for information on hospitality and catering courses.



Students get hands-on experience.



on course to be...

- ★ a Barista
- ★ a Caterer
- ★ a Chef
- ★ a Front of House Assistant
- ★ a General Manager
- ★ a Restaurant Manager.

LAW, POLICING AND PROTECTIVE SERVICES

Law, Policing and Protective Services courses are the perfect preparation for the challenge of the police and wider criminal justice sector, armed forces and fire service. Supported by industry, they focus on gaining practical experience in your area of interest and you'll benefit from experienced tutors and employer partnerships.

courses

Entry to the Uniformed Public Services	L3
Law and Legal Work	L2
Policing, Law and Criminology	L3
Policing	L3
Protective Services	L1 L2

Your grades will determine which course level you start on. Once you successfully complete your course you can progress to the next level in law, policing and protective services.

What's next?

Once you have completed your Level 3 course you can stay at Newcastle College to study a degree at the University Centre! We've got a range of degrees to choose from in Law, Policing and Protective Services, including Professional Policing.



Where will I study?

Most courses are based at our Rye Hill campus in Newcastle. The Newcastle Falcons programme is based at Kingston Park. You will benefit from working alongside industry experts and take enrichment opportunities including becoming an army reservist.

Which level will I study?

We have a course for everyone, regardless of your qualifications. Take a look at **page 30** for details on entry requirements and the level you'll begin at.



scan
me

for information
on LPPS
courses.



on course to be...

- ★ a Criminologist
- ★ a Firefighter
- ★ an Immigration Officer
- ★ a Military Personnel
- ★ a Police Officer
- ★ a Security Officer
- ★ a Solicitor.

LEARNING DEVELOPMENT

Learning Development study programmes at Newcastle College are created to enable those, aged 16-24, living with a disability and/or learning difficulty to progress and prepare for employment, make friends and learn to live more independently. Our personalised approach to education and learning will help you to develop a person-centred learning plan across a range of vocational areas.



Where will I study?

The Learning Development programme is individual to you, the places you study in will depend on your own plan. Generally you will be based at our Rye Hill Campus in the heart of Newcastle and if you choose to develop your vocational skills, you'll be placed in one of our real-working environments on campus. Internships will be based at your place of work.

Your experience

Learning Development provides group or individual specialist support across a range of vocational areas with excellent facilities and small classes. Your programme will be uniquely tailored to you and may also include travel training, personal and social development and employability skills. When combined with our internal and external work placements, wide range of enrichment activities and dedicated staff, our learners have consistently achieved outstanding achievement rates in nationally recognised qualifications in our core vocational area of retail.

COURSES ON OFFER

Life Skills Year 1 (Award in Personal Progress)

This course is ideal if you're a SEND learner and want to develop your independent living skills. The course will focus on helping you to develop as a person. You could be working on areas such as independent travel, social development, independent living skills and English and maths.

Life Skills Year 2 (Certificate in Personal Progress)

As part of this course, you will have the opportunity to further develop your skills, knowledge and behaviours to help you work towards being as independent as possible in your future. The course will include social development, independent living skills, character and employability skills and English and maths.

Vocational Options

This course gives you the chance to develop your independence and employability skills in a retail setting. You may also have the opportunity to experience a vocational taster in an area such as Childcare, Beauty, Construction or Automotive. The course combines both theory and practical work, a placement in our real-working environment at the College and enrichment activities designed to support your personal and social skills.

Developing Vocational Skills

You will be able to build on your understanding of employment and develop the skills needed to seek employment in your chosen area. You will work with your Personal Tutor to develop your individual learning plan and set realistic learning goals. A placement is an essential part of this course where you will have the opportunity to apply your practical skills and join in with enrichment activities designed to develop your personal and social skills.

Supported Internship

If you have learning difficulties/disabilities but want to gain meaningful experience in a real-working environment outside of the College, then this course is for you. You will access the College one day a week but spend the majority of your time at your work placement. Your job coach will work with you and support you and your employer to fulfil your training needs.

LLDD Customer Service Apprenticeship

This course is ideal if you're looking to progress into paid employment. You will have the opportunity to develop skills and knowledge in the workplace whilst earning a wage and working towards a Level 2 qualification in customer service.



on course to be...

- ★ an independent person
- ★ a more confident person
- ★ who you want to be.

MANUFACTURING ENGINEERING

Engineering courses at Newcastle College focus on giving you hands-on, practical experience and a sound understanding of the theory and principles behind everything you do. You'll join a group of curious and creative minds to spend time researching, designing, building and testing new technologies and products. Learning from expert tutors, you'll develop your skills using specialist equipment in our industry-standard workshops.

courses

Engineering	L2
Engineering (Academic)	L3
Engineering (Craft Engineering)	L3

You will begin studying on either a level 2 or level 3 course depending on your grades. Once you successfully complete your course you can progress to the next level in manufacturing engineering.

What's next?

Once you have completed your Level 3 course you can stay at Newcastle College to study a degree at the University Centre! We've got a range of degrees to choose from in Manufacturing Engineering, including Engineering with Applied Digital Technologies, Mechanical Manufacturing Engineering and Electrical Electronic Engineering.



Where will I study?

You'll study at our Rye Hill Campus with access to manufacturing equipment, including a full fabrication shop, manual machine shop, CNC area including 5 axis CNC mill, 3D printing and design software. We also house a PLC laboratory with Siemens systems and a PLC target training system as well as an instrumentation and control facility, electronics training facility and a process plant.

Which level will I study?

We have a course for everyone, regardless of your qualifications. Take a look at **page 30** for details on entry requirements and the level you'll begin at.



**scan
me** 
for information
on manufacturing
engineering
courses.



on course to be...

- ★ an Electrical Engineer
- ★ a Manufacturing Engineer
- ★ a Mechanical Engineer
- ★ a Military Engineer.

MUSIC

Our music courses will help you develop your technical, performance and creative skills as a musician, preparing you for a career in the industry. You'll have the chance to produce original music for possible release through our fully functioning record label. You'll also benefit from fantastic facilities and work experience opportunities and be able to collaborate with other students.

courses

Music Industry Skills

L2

Music Performance

L3

Electronic Music Production

L3

Music Technology

L3

Our music courses require you to demonstrate your talent through an audition. When you apply you'll be given further details on this.

What's next?

Once you have completed your Level 3 course you can stay at Newcastle College to study a degree at the University Centre! We've got a range of degrees to choose from in Music, including Music Production and Popular Music Performance.



Where will I study?

You'll study at our renowned Performance Academy, which houses an industry-standard music venue, recording studios, dedicated DJ and electronic music booth and rehearsal rooms. We also have a fully operational record label, with international distribution designed to showcase your original music.

Which level will I study?

We have a course for everyone, regardless of your qualifications. Take a look at **page 30** for details on entry requirements and the level you'll begin at.

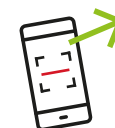


scan
me

for information
on music
courses.



Life as a music
student.



on course to be...

- ★ a Composer
- ★ a DJ
- ★ a Music Manager
- ★ a Music Journalist
- ★ a Music Producer
- ★ a Musician
- ★ a Songwriter
- ★ a Sound Engineer
- ★ a Writer/Composer.

PERFORMANCE AND PRODUCTION ARTS

Whether you're an actor, singer, dancer or musical theatre specialist, our performance and production arts courses will help you to develop your technical abilities. You'll learn from industry experienced tutors in fantastic facilities to help set you up for a career in the entertainment industry. You'll benefit from work experience opportunities and guest lectures from leading industry professionals. You will also have the chance to collaborate with students across college.

courses

Acting	L3
Dance	L3
Musical Theatre	L3
Performing and Production Arts	L2

Our performance and production arts courses require you to demonstrate your talent through an audition. When you apply you'll be given further details on this.

What's next?

Once you have completed your Level 3 course you can stay at Newcastle College to study a degree at the University Centre! We've got a range of degrees to choose from in Performance and Production Arts, including Dance, Musical Theatre, Acting and Stage Management.



Where will I study?

You'll study at our nationally-renowned Performance Academy, which houses a 200-seat theatre with fly-tower, a studio theatre, nine studios with sprung floors, barres and mirrors and an experimental theatre hub.

Which level will I study?

We have a course for everyone, regardless of your qualifications. Take a look at **page 30** for details on entry requirements and the level you'll begin at.



scan
me

for information on performance and production arts courses.



Performing arts students return to college.



on course to be...

- ★ an Actor
- ★ a Dancer
- ★ a Director
- ★ an Entertainer
- ★ a Performer
- ★ a Playwright
- ★ a Production Manager
- ★ a Screenwriter
- ★ a Stage Manager
- ★ a Stage Producer
- ★ a Teacher.

RAIL AND CIVIL ENGINEERING

Hands-on experience and industry support are at the centre of your learning when you study rail and civil engineering with us. You'll be based at our Rail and Civil Engineering Academy, the only training facility of its kind in the North East and have opportunities to undertake work experience with local employers. All of this is to help develop the skills and knowledge you need to succeed in the industry.

courses

Introduction to the Rail Industry

L2

Civil Engineering

L3

Customer Service for the Rail Industry

L2

Rail Engineering

L3

You will begin studying on either a level 2 or level 3 course depending on your grades. Once you successfully complete your course you can progress to the next level in rail and civil engineering.

What's next?

Once you have completed your Level 3 course you can stay at Newcastle College to study a degree at the University Centre! We've got a range of degrees to choose from in Rail and Civil Engineering, including Civil Engineering Practices and Rail Engineering.



Where will I study?

You'll be based at our specialist Rail and Civil Engineering Academy in Gateshead, which boasts overhead line equipment, multiple permanent way set-ups, signalling and mechanical workshops. It also has fully operating and interlocked switches and crossings, level crossing barriers and signalling equipment, as well as electronic and PLC testing and monitoring equipment. Civil engineering students have access to a soils laboratory, dedicated classrooms, surveying platform and facilities utilising surveying instruments including total stations.

Which level will I study?

We have a course for everyone, regardless of your qualifications. Take a look at **page 30** for details on entry requirements and the level you'll begin at.



scan
me

for information
on rail and civil
engineering
courses.



ON
COURSE
FOR
SUCCESS.

I enjoy the social side of the course. Everyone here helps each other. The course is closely mirrored to industry so you get a taste of what working in the environment would be like. I know what I have gained from coming to the College is what employers look for and it has set me up really well for a degree. After college my plan is to go to university. Anyone looking at the engineering industry as a career I would say if you enjoy how things work and why then this course is for you.

Olav Johnsen
Built Environment Student

on
course
to
be...

- ★ an Architect
- ★ a Civil Engineer
- ★ a Rail Engineer
- ★ a Site Manager
- ★ a Surveyor
- ★ a Technician.

RENEWABLE AND SUBSEA ENGINEERING

Our offshore renewables, subsea and welding courses have been developed with employers and offer exciting career opportunities within the wind energy, subsea, offshore, manufacturing or construction sectors. You'll benefit from links to employers, industry experienced tutors as well as develop your skills in specialist facilities, all to help prepare you for a career in one of the fastest growing industries in the North East.

courses

Engineering and Welding

L1

Engineering for Subsea and Renewable Energy

L3

Engineering (Renewable and Subsea Craft Technician)

L2

Offshore Renewables and Subsea Engineering

L3

Welding Fabrication

L2 L3

Your grades will determine which course level you start on. Once you successfully complete your course you can progress to the next level in renewable and subsea engineering.

What's next?

Once you have completed your Level 3 course you can stay at Newcastle College to study a degree at the University Centre! We've got a range of degrees to choose from in Renewable and Subsea Engineering, including Subsea and Offshore and Renewable Engineering.



Where will I study?

Depending on your chosen course you will either be based at our Energy Academy in Wallsend or at the Port of Blyth. The Energy Academy provides a dedicated space to train for a career in the sector. Take advantage of welding and fabrication facilities, industry standard software, wind turbine and solar panel testing, plus the world's most advanced Engineering for Subsea and immersive Hybrid Reality system.

Which level will I study?

We have a course for everyone, regardless of your qualifications. Take a look at **page 30** for details on entry requirements and the level you'll begin at.



scan me

for information on renewable and subsea engineering courses.



It's easy being green – become part of the initiative too!



on course to be...

- ★ an Energy Engineer
- ★ a Health and Safety Installation Manager
- ★ an Operations Supervisor
- ★ a Project Manager
- ★ a Site Manager
- ★ a Subsea Engineer
- ★ a Wind Turbine Technician.

SCIENCE

If you have a practical mind with a keen interest in the innovative and exciting world of science, then one of our science courses might just be for you. Our courses are career focused, with a strong emphasis on practical and vocational projects to help you develop your skills. You'll benefit from work experience opportunities with a range of local employers and be taught by industry experienced tutors to give you an insight into what it's like to work in the sector.

courses

Applied Science

L1 L2 L3

Forensic and Criminal Investigation
with Applied Psychology

L3

You will begin studying on either a level 2 or level 3 course depending on your grades. Once you successfully complete your course you can progress to the next level in science.



Where will I study?

You'll be based at our Rye Hill Campus in the heart of Newcastle. You'll have access to an instrumentation centre, fully equipped modern science labs, microbiology analysis labs and an automated process control room. We also house facilities for industrial chemical analysis equipment and a 'class 10,000' clean room.

Which level will I study?

We have a course for everyone, regardless of your qualifications. Take a look at **page 30** for details on entry requirements and the level you'll begin at.



scan
me

for information
on science
courses.



ON
COURSE
FOR
SUCCESS.

I knew someone who was coming here so that helped me make my decision. I have made a lot of friends not just in my class but across the College. The tutors are always there if you need help. The teaching here is very different to Italy, here the teaching environment is more comfortable and teachers are very approachable.

Ivana Odobo
Science Student

on course to be...

- ★ an Analytical Chemist
- ★ a Biomedical Scientist
- ★ a Forensic Scientist
- ★ a Pharmacist
- ★ a Psychologist
- ★ a Veterinarian.

SPORT

Study a sport course with us and you'll learn from world-class athletes and industry experienced tutors to develop skills in coaching, fitness and personal development. You will benefit from our strong industry links and work with local sports teams including Newcastle United Foundation, Newcastle Falcons and Newcastle Eagles and have the opportunity to train in their specialist facilities, all to enhance your learning experience.

courses

Sport	L1 L2
Sport and Exercise Science	L3
Sports Coaching and Development	L3
Sports Fitness and Personal Training	L3

Students studying sport can be part of The Newcastle United Foundation Football Development Programme and Durham Ladies Football Development Programme.*

* To be confirmed.

What's next?

Once you have completed your Level 3 course you can stay at Newcastle College to study a degree at the University Centre! We've got a range of degrees to choose from in Sport, including Sport and Exercise Rehabilitation and Sports Coaching.



Where will I study?

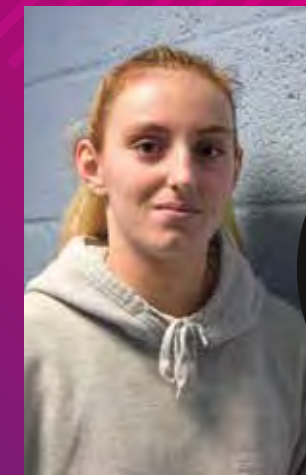
You'll be based at our Rye Hill Campus in the heart of Newcastle. You'll have access to fully equipped gyms, a sports hall, sports injury clinic, fitness studio, climbing wall and extensive IT suites along with access to Newcastle Eagles Community Arena with eight court basketball hall, gym and classrooms. You'll also have access to a biomechanics and physiology laboratory with motion analysis.

Which level will I study?

We have a course for everyone, regardless of your qualifications. Take a look at **page 30** for details on entry requirements and the level you'll begin at.



scan me
for information
on sport
courses.



**ON
COURSE
FOR
SUCCESS.**

When I was looking at what college to go to I came to Newcastle College's Open Event to find out more about the courses on offer. It was good to chat to tutors and get all the information about the courses. I enjoy the theory side of coaching and learning how to put this into practice, the tutors are great at supporting you with this.

Erin McIntosh
Sport student

on course to be...

- ★ a Performance Coach
- ★ a Personal Trainer
- ★ a Physical Education Teacher
- ★ a Physiotherapist
- ★ a Sports Coach.

TRAVEL AND TOURISM

If you're looking for a course that will broaden your horizons, our travel and tourism courses will help take you there. Designed with employers, you'll develop skills in customer service, hospitality and running your own business to prepare you for working in the travel industry. We have strong links with local travel agencies, hotels and attractions and you'll have the opportunity to gain work experience as well as undertake industry trips, to give you a real taste of what it takes to succeed in the sector.

courses

Aviation (Operations and Cabin Crew) **L2**

Aviation Operations **L3**

Travel and Tourism **L2 L3**

You will begin studying on either a level 2 or level 3 course depending on your grades. Once you successfully complete your course you can progress to the next level in travel and tourism.

What's next?

Once you have completed your Level 3 course you can stay at Newcastle College to study a degree at the University Centre! We've got a range of degrees to choose from in Travel and Tourism, including Tourism and Hospitality and Airline and Airport Management.



Where will I study?

On our Travel and Tourism courses you will be based at our Rye Hill Campus in the heart of Newcastle and work with our dedicated facilities which replicate real-working environments. For Aviation Operations you will learn in our Aviation Academy based at Newcastle International Airport where you will have access to commercial aircrafts for cabin crew training. You'll also gain experience outside of the classroom through employer partnerships, giving you invaluable opportunities to enhance your CV and prepare yourself for employment.

Which level will I study?

We have a course for everyone, regardless of your qualifications. Take a look at **page 30** for details on entry requirements and the level you'll begin at.



scan me

for information on travel and tourism.



ON COURSE FOR SUCCESS.

I researched what qualifications my career looked for and Level 3 Travel and Tourism was one of them. I saw the College offered this course so I came to an Open Day. I enjoyed the Open Day it was very informative. I met the course tutor and the information she gave me about the course was very appealing. I also spoke to Student Services they were helpful and provided me with financial information.

Courtney Dean
Travel student

on course to be...

- ★ a Cabin Crew Member
- ★ a Holiday Resort Representative
- ★ a Hotel Manager
- ★ a Resort Entertainer
- ★ a Travel Agent
- ★ a Travel Consultant
- ★ a Tour Manager
- ★ a Tourist Information Adviser.

Coming soon! T Levels

From September 2023 Newcastle College will begin to offer new and exciting T Level qualifications in Construction, Digital, Education, Childcare, Health and Science.

What are T Levels?

T Levels are two-year courses designed with businesses and combine college learning with a work placement.

These qualifications are for students who have just finished their GCSEs and want to develop the knowledge and skills which helps them get straight into employment, an apprenticeship or higher education.

T Levels are the equivalent to three A Levels and you'll spend 80% of your time in college and 20% on a 45-day placement with an employer.

What are the benefits of T Levels?

- **Created with employers** – more than 250 employers have helped design T Levels meaning they are aligned to the needs of industry.

- **Combine work and study** – students learn in college and undertake a placement with an employer where they will gain vital experience.

- **Progression opportunities** – when students pass they will be awarded a nationally recognised qualification supporting progression into further study or employment.

- **UCAS points** – T Levels are worth UCAS points and a T Level Distinction* is worth the same as 3 A levels at A*

For further information on T Levels, please visit: tlevels.gov.uk



HOW TO FIND US

By train or Metro

You can take a train or Metro to Central Station which is only a five to ten-minute walk away from our Rye Hill Campus. Just turn left out of Central Station and pass Centre for Life. Continue past the Discovery Museum until you come to our campus. A recommended walking route is available from our website. Visit www.ncl-coll.ac.uk/how-to-find-us

By car from the North or South

Take the A1 and follow directions to Newcastle and then pick up the A189 over the Redheugh Bridge. As you cross the Redheugh Bridge, move into the left hand lane and turn left immediately after you have crossed the bridge. At the first roundabout turn right into the Rye Hill Campus car park. Parking is free.

By car from Newcastle City Centre

Follow signs to Central Station, or Blaydon A695. Once past the station, bear left at the traffic lights beside the Centre for Life, go straight on at the next traffic lights and turn right at the next traffic lights into Railway Street. Pass under the Redheugh Bridge approach road, bend right with the road and then go straight on at the first roundabout on Scotswood Road into the College car park. Parking is free.

Once on campus

For general enquiries, make your way to Student Services.

Newcastle College
Armstrong House
Rye Hill Campus
Scotswood Road
Newcastle upon Tyne
NE4 7SA

0191 200 4000
enquiries@ncl-coll.ac.uk
www.ncl-coll.ac.uk

Further Newcastle College campuses can be found at:

Automotive Academy
Unit 36 Invincible Drive
Armstrong Industrial Park
Newcastle upon Tyne
NE4 7HX

Aviation Academy
Newcastle International Airport
Woolsington
Newcastle upon Tyne
NE13 8BT

Energy Academy
Hadrian Road
Wallsend
NE28 6HH

Rail Academy
William Street
Felling
Gateshead
NE10 0JP



This guide and other course information is available in alternative formats and large print. Call 0191 200 4000.

Safeguarding

We are committed to Safeguarding and ensuring all learners experience a secure, safe and welcoming environment in which they can fulfil their potential. Specific policies and procedures are in place to safeguard young people and vulnerable adults; these are robust and are reviewed regularly. Procedures are in place to take all reasonable measures to ensure risk is minimised and appropriate action is taken to address any welfare concerns.

Newcastle College welcomes diversity in its student population – valuing differences in race, gender, sexual orientation, disability, religion or belief, class and age. We actively oppose discrimination, aim to remove all conditions that put people at a disadvantage, strive to improve access and to provide outstanding support. We are committed to providing an inclusive learning environment. We have produced a Single Equality Scheme which sets out our response to statutory obligations and our approach to the active promotion of equality and diversity. Please discuss your support needs with us and we will make every reasonable effort to make adjustments to help you succeed.

Disclaimer

Newcastle College will take all reasonable steps to provide the educational services and courses as described in this prospectus and in further documents. However, it does not guarantee the provision of such services. The provision of courses is dependent on there being sufficient demand to make their operation viable. At the time of publication (September 2021) all course titles and information were correct.

NCG Guarantee

Newcastle College is proud to be part of NCG, one of the country's leading college groups.

We are one of seven colleges across the country that make up NCG, meaning we're a key part of providing education and training to learners, apprentices and employers across the UK.

Together, we share expertise, support each other to grow, help each other to innovate and accomplish real change for individuals, communities and economies across the country.

Student benefits

Students studying at any of our colleges benefit from the **NCG Guarantee**. This guarantee gives all our students access to a range of tools and initiatives centred around a core set of principles. Our courses, additional support services and enrichment activities will equip you with a wider set of skills, all of which aim to make you more employable.

Put simply, the NCG Guarantee gives students access to additional activities, resources and initiatives to help you achieve your ambitions and career goals.

The NCG Guarantee is centred around:

- Employability
- Community
- Enterprise
- Mental Fitness
- Digital.

Throughout your time with us you will be involved in a range of projects and initiatives focused on these principles. Coupled with excellent teaching and learning, you will complete your course with a unique set of skills which help set you up for your future.



Newcastle College
Rye Hill Campus
Scotswood Road
Newcastle upon Tyne
NE4 7SA

0191 200 4000
enquiries@ncl-coll.ac.uk
www.ncl-coll.ac.uk

