

**SKILLS  
FOR LIFE**

**APPRENTICESHIPS**



**Apprenticeship  
course  
guide  
2025**



# events

Choosing a college is a really important decision, and we know you'll probably have lots of questions before applying to study an apprenticeship with Newcastle College. We run events throughout the year to help give you as much information as possible about all we have to offer.

## Monthly Open Events

Visit one of our Open Events and get a feel for what it's like to study with us! We'll help to find the right apprenticeship for you!

## What happens at an Open Event?

Join us to see our fantastic facilities, meet staff and:

- speak to tutors about the courses you're interested in.
- find out what support services are available to you whilst you study.
- talk to our Apprenticeship Team to find the industry placement that's right for you.
- see our campus for yourself.
- get support with making an application.

Head to [www.ncl-coll.ac.uk/events](http://www.ncl-coll.ac.uk/events) to find out more about our events!

## Open Event Dates

WED	OCT 02 4.45PM – 7PM	NOV 06 4.45PM – 7PM	WED
WED	DEC 04 4.45PM – 7PM	JAN 08 4.45PM – 7PM	WED
WED	FEB 05 4.45PM – 7PM	MAR 05 4.45PM – 7PM	WED
WED	APR 02 4.45PM – 7PM	MAY 07 4.45PM – 7PM	WED
WED	JUN 04 4.45PM – 7PM		

## DISCLAIMER

Information and courses published in this guide is intended for guidance purposes only and does not constitute a contract.

Newcastle College makes every effort to ensure that the information on courses given in this guide is up to date and accurate. However, the information may be subject to change and we do not guarantee its accuracy. NCG and Newcastle College do not accept any liability for omissions, errors or changes.

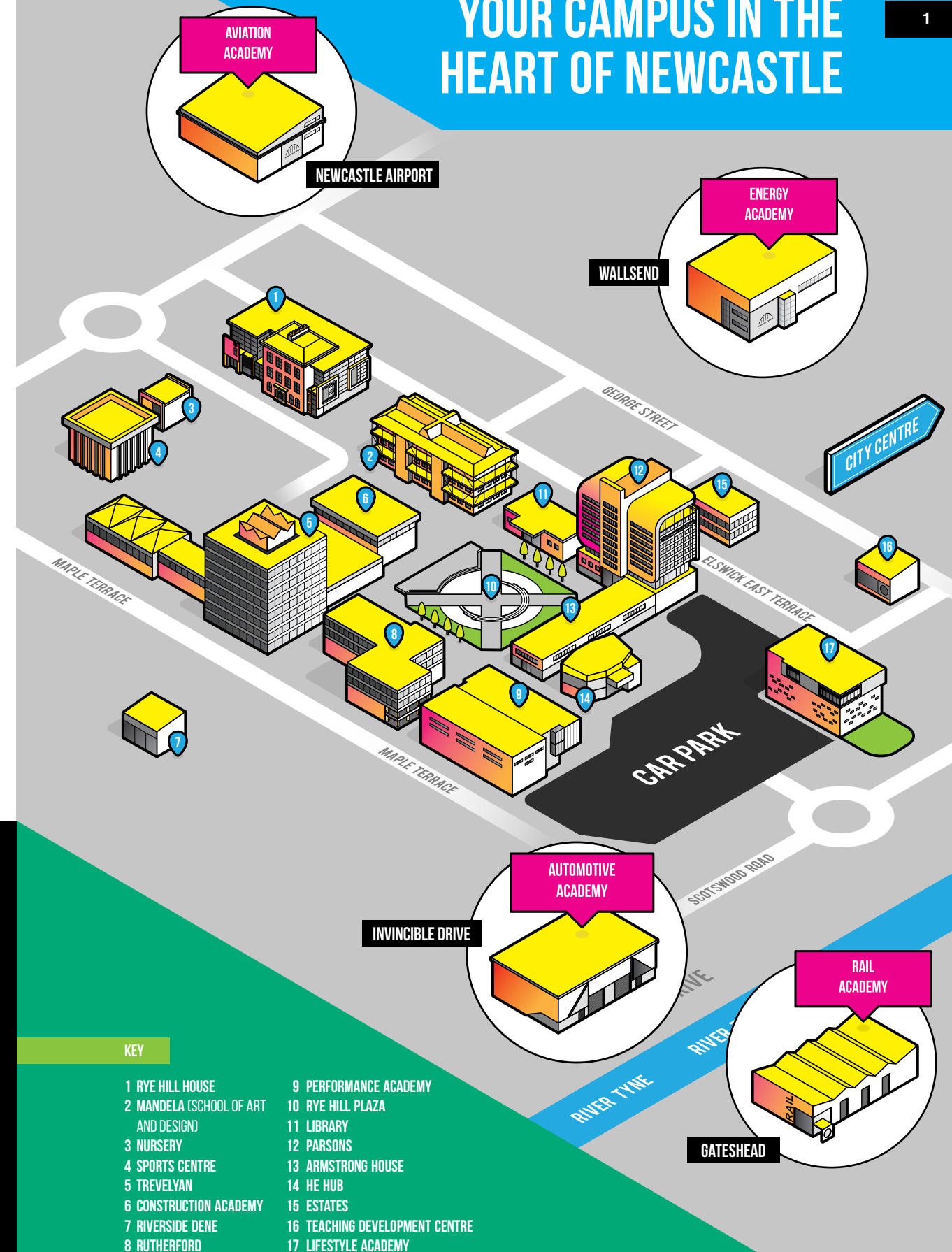
We reserve the right to review or amend entry requirements for any of our courses.

On occasion, it is necessary to move or withdraw courses owing to a variety of reasons. The College cannot, therefore, guarantee the provision of all courses advertised in this guide. Where a course is removed or amended, the college will make every effort to transfer students to a suitable and available alternative course.

Where applicable, we follow the guidelines set by funding authorities. Fees are subject to status and may change at short notice due to circumstances beyond our control. The fees payable are those in force at the time of enrolment, which supersedes any that may previously have been advertised.

# YOUR CAMPUS IN THE HEART OF NEWCASTLE

1





# Principal's welcome

## Hello from Newcastle College!

This is an important stage in your life as you consider your future and make decisions about your next steps.

As you think about what your passions are, or what you'd like your career to look like, I hope you choose Newcastle College to undertake your apprenticeship.

Newcastle College prioritises hands-on learning in first-class facilities, tutors with industry experience and opportunities to work with employers and industry experts throughout your apprenticeship. You'll split your time between your workplace and our campus, developing the skills and experience you need to develop your career.

I am proud to say that Newcastle College is an open and welcoming college with a vibrant student community at its heart. We always aim to give you an excellent learning experience and your wellbeing always comes first. When you choose us, you'll be welcomed by supportive staff who will offer you a safe space to be your best self whilst you study. Whether you're on campus or at work, you'll benefit from a Personal Tutor, Skills Trainer and our award-winning Student Support Team will be on hand to help you whenever you need them.

We insist apprentices give their best both on campus and in the workplace, and in return we will give you the skills and experience you need to succeed. We'll support you to achieve your goals and we'll give you every chance to progress. You may decide to continue to study higher education and follow in the footsteps of apprentices who have gone on to graduate from Newcastle College University Centre, and perhaps take your studies all the way to Masters Degree level.

I do hope you're interested to learn more and our friendly Student Services Team is on hand to answer your questions. Seeing is believing and I encourage you to come along to one of our Open Events, where you can meet lecturers face-to-face, get a feel for the College and find the right course for you.

**I hope that I'll be welcoming you to Newcastle College very soon!**

**Jon Ridley**  
Principal, Newcastle College



# student content

Principal's welcome	2
Apprenticeship overview	4
English, maths and Functional Skills	5
Becoming a Newcastle College apprentice	6
Inspirational facilities	8
Apprentice life	12
Student Services	14
Student support	15
Information for parents and guardians	16
Progression opportunities at Newcastle College	17
Apprentice employers	18
Funding and grants for employers	19
Becoming an apprentice employer with Newcastle College	20
Employer profiles	22

## Our Apprenticeships

Automotive – Motor Vehicle Services and Maintenance Technician (Light Vehicle)	28
Business – Business Administrator	29
Business – Customer Service Practitioner	29
Construction – Bricklayer	30
Construction – Carpentry and Joinery	30
Construction – Installation and Maintenance Electrician	31
Construction – Painter and Decorator	31
Construction – Plasterer	32
Construction – Plumbing and Domestic Heating Technician	32
Construction – Roofer	33
Digital – Creative Digital Design Professional (Integrated Degree)	34
Digital – Digital and Technology Solutions (Integrated Degree)	34
Energy – Metal Fabricator	35
Energy – Plate Welder	35
Engineering – Machining Technician	36
Engineering – Maintenance and Operations Engineering Technician	36
Hair – Hair Professional	38
Hospitality – Commis Chef	39

How to find us	40
NCG Guarantee	41

# APPRENTICESHIP OVERVIEW

An apprenticeship is an industry-driven, high-quality career pathway where you can get paid work experience, classroom learning and one-to-one mentoring while your employer can develop and prepare their future workforce.

**Apprenticeships span more than 1,000 occupations, including careers in:**

- Automotive
- Business
- Construction
- Digital
- Energy
- Engineering
- Hair
- Hospitality.

The length of an apprenticeship programme can vary depending on the occupation, the industry, the type of apprenticeship programme and your own previous knowledge and experience.

Alongside on-the-job training, you'll spend at least six hours per week on campus, gaining essential technical knowledge and developing practical skills and behaviours, which will help you to achieve a nationally recognised standard of qualification for when you enter your chosen industry.

**An apprenticeship with Newcastle College includes:**

- at least 30 hours per week of paid employment (including holiday leave).
- hands-on experience in a sector or role of interest to you.

- at least six hours per week off-the-job training on campus to develop your knowledge.
- regular workplace progress reviews with your employer (typically once every eight weeks).
- formal end-point assessments, leading to a nationally recognised apprenticeship standard.

Apprenticeship Level	Entry Requirements	Still unsure which level is right for you?
Level 6-7 (Higher Apprenticeship) L6 – L7	At least GCSE Grade 4 or Functional Skills Level 2 in English and maths	If you are still unsure which level to apply for come along to one of our Open Events to speak to our tutors or Student Advisors.
Level 4-5 (Degree Apprenticeship) L4 – L5		
Level 3 L3	At least GCSE Grade 3 or Functional Skills Level 1 in English and maths, with the requirement of studying for GCSE Grade 4 or Functional Skills Level 2	Alternatively, call Student Services on <b>0191 200 4000</b>
Level 2 L2		

\*Progression from apprenticeship to degree only applies in subject areas which offer both apprenticeships and degree courses.

# English + maths and functional skills

At Newcastle College, we place developing English, maths and Functional Skills at the heart of your programme of study to make sure you are confident and competent using the core skills you need to progress. English and maths skills are essential in job roles across all industries, for example:

- ★ **Car mechanics need to provide quotes and raise invoices.**
- ★ **Hairdressers need to be able to calculate prices and order stock.**
- ★ **Chefs need to be able to measure out ingredients and price up menus.**
- ★ **All workers need to be able to communicate effectively both verbally and in writing.**

If you're applying for an apprenticeship and don't already meet our entry requirements in English and maths, you will be invited to campus to complete an initial assessment to gauge your proficiency. If you pass the assessment, your timetable will include an additional half-day on campus each week for English and maths lessons, which you must attend to successfully complete your apprenticeship and progress onto the next level with us.

## DID YOU KNOW?

When you successfully complete your Level 3 apprenticeship with us, you'll be automatically offered a place at Newcastle College University Centre on a relevant degree course or integrated degree apprenticeship! See page 17 for more details\*.

# BECOMING A NEWCASTLE COLLEGE APPRENTICE

1

## Express your interest

Contact our Apprenticeship Team by completing the online form on our website and tell us what you're looking for in an apprenticeship. We'll contact you within two working days to chat about your options and invite you to an Assessment Day.

2

## Your Assessment Day

Come onto our campus and work with our dedicated Apprenticeship Team to make sure you've got the knowledge, skills and behaviours your employer will need. We'll then help you prepare for your interview and support you in arranging it.

3

## Your employer interview

If you pass your Assessment Day, you'll be invited to interview with an employer in your chosen industry about an apprenticeship vacancy in their organisation.

4

## Your Enrolment

If you're chosen by an employer to be their apprentice, you'll attend our Enrolment Event with your employer to formally become a Newcastle College apprentice and find out what your apprenticeship is all about.

5

## Your apprenticeship begins!

You'll attend your first day release with your employer and legally become an apprentice in your chosen business.

At this point, you and your employer will also receive copies of our Enrolment Form, which further outlines the details of the apprenticeship.

6

## On- and off-the-job training

Plan activities in your workplace to benefit you and develop your employer's business during your apprenticeship, alongside receiving at least six hours of training per week on Newcastle College campus and another two hours per week in your workplace. Log your training portfolio using Smart Assessor.

7

## English and maths

Level 3 apprenticeships require a minimum of GCSE Grade 4 or Functional Skills Level 2 in English and maths, with no scope for resits. If you are studying a Level 2 apprenticeship and achieved lower than the minimum English and maths grades, you will need to attend weekly English and/or maths sessions to prepare for resit exams at the end of your academic year.

8

## What happens if I fall behind?

If you fall behind in your apprenticeship, the Apprenticeship Team will produce a personalised development plan with your teacher, Skills Trainer and employer to get you back on track. This plan may include extra workplace visits, among other methods.

9

## Skills Trainer reviews, visits and support

After the first four weeks of your apprenticeship, we'll complete a 'right-choice review' with you and your employer. If your chosen apprenticeship is still suitable for you once you've had time to settle in, you'll have progress reviews with your Skills Trainer in your workplace once every four weeks for the rest of your apprenticeship. These visits will follow an alternating pattern of 'stretch and challenge' linked to what you've been learning at college, which will help you to put your knowledge into practice and plan your next steps on your apprenticeship.

10

## Gateway

Gateway is the beginning of your End Point Assessment (EPA), reached once you've gained the knowledge, skills and behaviours required as part of your apprenticeship, as well as spent six hours per week in off-the-job training and achieved any essential qualifications (if required), including English and maths qualifications.

11

## End Point Assessment (EPA)

Your final test to make sure you have the knowledge, skills and behaviours for the workplace. This usually involves a practical exam and a professional interview based on your portfolio evidence.

12

## Careers Information, Education, Advice and Guidance (CIEAG)

You'll discuss your next steps with your Skills Trainer throughout your apprenticeship. Our Apprenticeship Team will help you to complete a career plan during your 'right-choice review', which will be evaluated at the end of your apprenticeship with your teacher, employer and Skills Trainer to make sure you're achieving your goals. We'll also discuss career options with you during any employer reviews to support your progression into the company once you've completed your apprenticeship.

13

## End of the apprenticeship

Once you've completed your apprenticeship, you'll be offered the progression opportunities that best suit you. This can be either becoming a full-time employee at your apprenticeship workplace, based on your performance and the judgement of your employer; or you can progress onto a degree-level course with Newcastle College University Centre; or you can retrain and enter the workforce with a different employer. Whatever you decide to do, Newcastle College is here to support you and help you to be the best professional you can be!

## HOW CAN I BECOME AN APPRENTICE?

Our dedicated Apprenticeship Team is here to help you. **Enquire now** by clicking the links below. Once you complete your enquiry form, a member of our team will contact you **within two working days** to invite you to an Assessment Day.



click  
here

To see our current apprenticeship vacancies



click  
here

To enquire about an apprenticeship with  
Newcastle College



# inspirational facilities

See our  
subject area  
pages for  
more info  
on our  
facilities!

We've invested in our facilities to give you the best learning experience possible. Our real-working environments allow you to get a taste of what it's like to work in your chosen industry.

## Automotive Academy

Our Automotive Academy is a specialist facility, close to our Rye Hill campus, purpose-built for our Automotive students to learn skills for their future.



## Construction Academy

This is the place to learn bricklaying, carpentry and joinery, electrical installation, painting and decorating, plastering, plumbing and roofing apprenticeships. Our Construction Academy is in partnership with **Persimmon Homes**, who supply industry-standard equipment for our learners to use.



## Energy Academy

Strategically placed close to renewables industry partners in Wallsend, this facility is a hub for specialist engineering apprentices wishing to work in subsea and renewable energy engineering technologies.





# Lifestyle Academy

Specialist facilities can be found in our Lifestyle Academy, home to students studying Hairdressing and Hospitality apprenticeships.



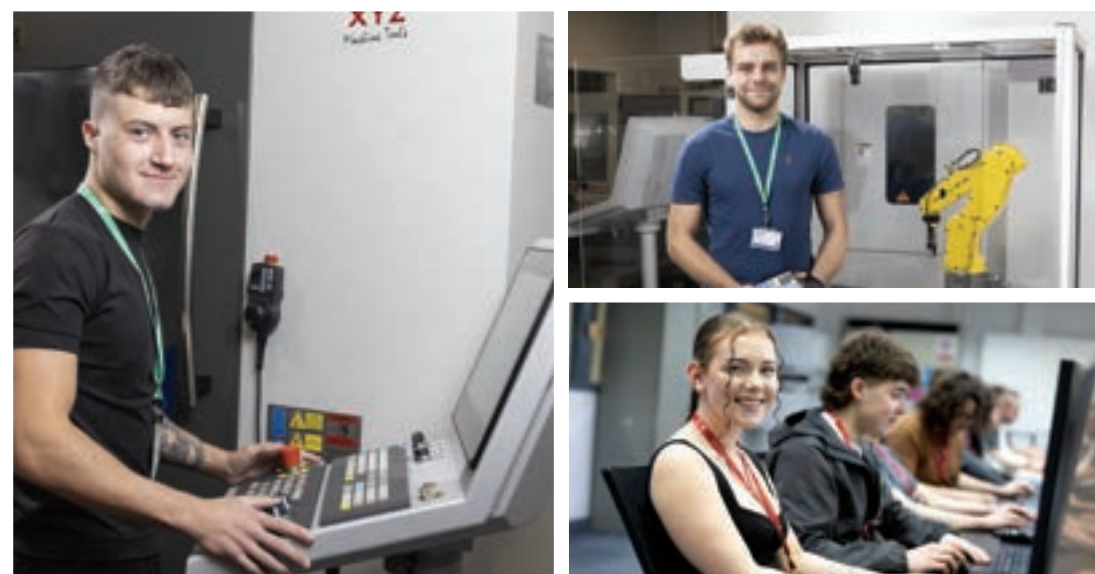
# Mandela (School of Art and Design)

Our dedicated School of Art and Design is based in the Mandela building and is our creative hub for Digital Arts apprentices to develop their craft.



# Rutherford

Rutherford is where our Engineering apprentices learn and have access to a range of specialist facilities and industry-standard equipment.



# Trevelyan

We have dedicated spaces and learning zones for our Business and Computing apprentices within the Trevelyan building.





# Apprenticeship life

## students' union

You automatically become a member of Newcastle College Students' Union (SU) when you become an apprentice at the College. Once you've enrolled, you can purchase an **NUS TOTUM** card which will give you a variety of **discounts and offers**.

The SU offers advice, campaigns on your behalf and works across the College to make your apprenticeship experience as strong as possible. Their social programme also includes trips, events, volunteering and opportunities to join clubs and societies.

At Newcastle College we want you to enjoy your time with us. We aim to give you as many opportunities as possible to have fun and make memories alongside your studies.



Click  
here

### Grab a glimpse of life on campus

Trips and visits

Student awards ceremonies

Exhibitions and theatre shows

A range of food and drink outlets.

# Apprenticeship Awards

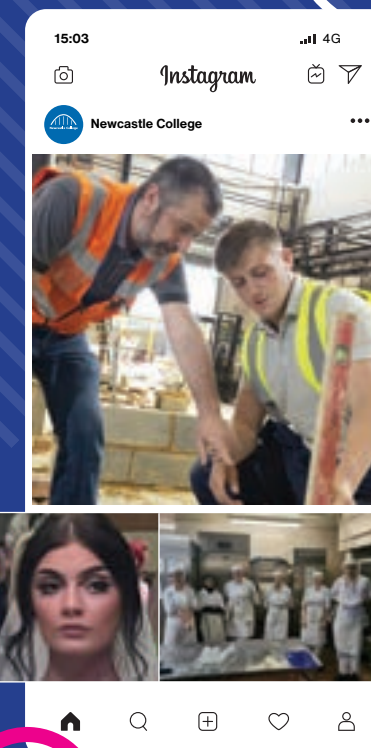


The Newcastle College Apprenticeship Awards are an annual evening where we celebrate the achievements of our fantastic apprentices. This annual Apprenticeship Week event is a brilliant opportunity to recognise the apprentices who go above and beyond and to share stories of how your apprenticeship makes a real difference to you and your employer.



Check out our official Newcastle College social media accounts. Find out more about our beautiful city, incredible talent and what our students get up to at college! #ImInNCL

## college social



Instagram



# student services

**starting your new journey at college can feel like a big step, but we're here to help you along the way. Whether you need support with travel costs or want to find out which apprenticeship is right for you, our Student Services Team is here to help.**

**Our centre is open Monday and Wednesday 9.30am - 4.30pm and Tuesday, Thursday and Friday 8.30am - 4.30pm (term time only).**

## Course information and advice

If you're looking for course information or impartial advice and guidance on your career choice and next steps, you can drop in or make a one-to-one appointment with our team. We work with you to develop a unique personal pathway to help you reach your full potential.

## Careers advice

We can offer careers advice, helping you make the right choice when choosing an apprenticeship at Newcastle College. For further careers advice, we can refer you to the National Careers Service.

## Finance information and advice

This includes:

- childcare, travel and accommodation costs
- assessments for college support funds and bursaries
- course fees (if applicable), study costs and college financial support (such as college meal entitlement or travel costs and bursaries)
- signposting you to agencies who can support with benefit advice and debt management
- student finance applications and queries.

## Wellbeing

We have an excellent college Central Support Team who we can refer you to. Our team offers a wide range of services including learning support, mentoring support, advice on sexual health and counselling.

## Contact our team

Email: [enquiries@ncl-coll.ac.uk](mailto:enquiries@ncl-coll.ac.uk)

Phone: 0191 200 4000

When calling our switchboard, call **Option 1** for employer enquiries or **Option 2** for learner enquiries.

# student support



**At Newcastle College, we aim to provide every apprentice with an outstanding experience. Our Central Support Service (CSS) offers a range of services that help apprentices like you to reach your full potential.**

## Learning support

We work closely with curriculum teams to provide an inclusive environment and support while you're studying at Newcastle College. We offer access support and individualised care plans; life skills sessions for all apprentices; and Special Educational Needs and Disability (SEND) specific advice, guidance and signposting.

## Assistive Technology and Exam Access Arrangements

The Assistive Technology Team can provide you with equipment, software and training should you have any additional support needs. The team is also home to the Transcription Service, which can provide you with expert conversion of course materials, exam papers and other documents into a variety of different formats, such as Braille, large print and audio.

## Pastoral support

The Pastoral Support Team works with you in a number of ways, including providing drop-in sessions, group work, one-to-one support and counselling to support your social, emotional and behavioural wellbeing.

The Pastoral Support Team provides specialist support for any apprentices with additional support requirements, including care-experienced apprentices, expectant mothers and young adult carers. We also provide Learning Mentors to advise you in health, wellbeing and personal safety, employability support and life skills, as well as Mental Health First Aiders to support any apprentices in mental health distress.

## Library and Learning Spaces

Our Library Team can support with accessing IT at college, research skills, finding the correct resources you need and a wide range of other useful services. The main Library on Rye Hill campus has over 40,000 physical resources and an extensive online catalogue, as well as a dedicated IT centre you can use to drop in and study.

## GET IN TOUCH

Talk to our Central Support Service Team on

**0191 200 4189**

or email [css@ncl-coll.ac.uk](mailto:css@ncl-coll.ac.uk) to discuss your support needs and how we can help.

# INFORMATION FOR PARENTS AND GUARDIANS

If your child, or someone you care for, is considering their next steps with Newcastle College, you can be assured that we're the right choice. Our priority is helping all our apprentices to aim high, achieve their goals and progress beyond them.

## Your involvement

Coming to college is an exciting step into the real world, with a new campus, new friends and the start of a new apprenticeship. We like to think we help all our apprentices gain their independence while they're with us. We expect them to turn up on time, work hard and strive to be their best every day.

We also know that you share our goals of wanting our apprentices to succeed. We'll keep you informed and up to date on progress and concerns, but we trust our apprentices to do the work to reach their goals.

## Keeping track of progress

All our apprentices are assigned a Personal Tutor, a Skills Trainer and an employer mentor to help them develop individual targets and progression plans both on campus and with their employer. We encourage our apprentices to take responsibility for their own success and focus on progressing to the next step. We'll support them in any way we can and they'll meet regularly with their Personal Tutor and Skills Trainer to help keep them on track.



**click  
here**



## Apprenticeships and vocational study – what's the difference?

While some college programmes (e.g. A Levels) focus exclusively on academic skills and learning, apprenticeships give you hands-on practical experience in the workplace, supported by time on campus learning key skills and knowledge. Academic courses focus more on written assessments and full-time academic study rather than developing the practical skills which are very beneficial when it comes to gaining experience and finding employment.

An apprenticeship also trains learners in specialist areas relevant to industry, so they can focus on an area that interests them. In fact, the Government is keen to develop even more apprenticeships to teach a generation of learners valuable professional skills, recognising the benefits of hands-on learning. Apprentices are still awarded UCAS points, so a Newcastle College apprentice can progress onto university too.

If your child or someone you care for is interested in securing an apprenticeship, please contact our dedicated Apprenticeship Team by emailing [apprenticeships@ncl-coll.ac.uk](mailto:apprenticeships@ncl-coll.ac.uk)

## Any questions?

Join us at an Open Event to speak to tutors, get course information and see what life on campus and life as an apprentice has to offer.

**NEWCASTLE  
COLLEGE  
UNIVERSITY  
CENTRE**

# PROGRESSION OPPORTUNITIES

## AT NEWCASTLE COLLEGE UNIVERSITY CENTRE

Your journey with us doesn't have to end after you complete your apprenticeship. If you successfully meet the published Level 3 entry requirements in an appropriate subject(s), you will be guaranteed a place on that course.

As an apprentice, you might not be thinking about moving to the next step just yet. However, it is always good to know what your future could bring and with Newcastle College, we can help you take that next step into higher education.

Many of our students choose to Step Up to a degree at Newcastle College University Centre, including our apprentices. Once they

successfully complete their apprenticeship, they choose to progress their studies and gain enhanced skills and knowledge before they pursue their chosen career.

We have over 60 degree courses to choose from, including several degree apprenticeships, which are multi-year higher apprenticeships where you study for a degree qualification

while being employed with a relevant business. Each of our degree courses come with excellent student support, industry links and leading-edge facilities.

You can find out more about Steppin' Up with Newcastle College University Centre by clicking the QR code below:



**click  
here**





# Apprentice Employers

At Newcastle College, we work with businesses across the region to deliver world-class training and open up employment opportunities as you develop essential professional skills during your apprenticeship.

Our Apprenticeship Team and Business Development Team work with employers across the North East. We specialise in vocational training and by working closely with our industry partners, we make sure that your apprenticeships are teaching you the knowledge, skills and behaviours that employers are really looking for, giving you the edge in employment while your employer can access a new generation of skilled and work-ready talent. For more information on our employer links, please email [employers@ncl-coll.ac.uk](mailto:employers@ncl-coll.ac.uk)

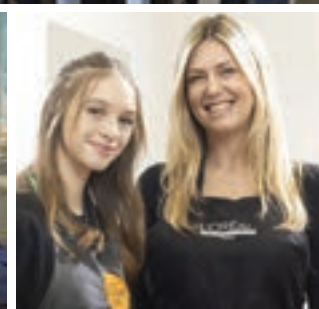
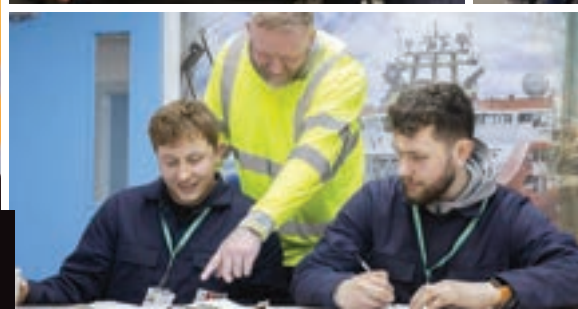
## What do apprentices bring to an employer?

- A chance to expand the workforce with motivated, skilled and qualified new talent
- An opportunity to upskill existing employees through mentorship opportunities
- Adaptable training to suit your employer's needs.

## What do employers think about hiring apprentices?

- 86% of employers agree apprenticeships helped them develop skills relevant to their organisation
- 78% of employers improved their productivity using apprentices
- 74% of employers felt their quality of service improved thanks to apprenticeships\*.

\*data sourced from [www.apprenticeships.gov.uk/employers](http://www.apprenticeships.gov.uk/employers)



# FUNDING AND GRANTS FOR EMPLOYERS

As a Newcastle College apprentice, your time as our learner is fully funded by the government and/or your employer. To help cover the cost of your apprenticeship, your employer may be eligible for the following cash incentives, depending on your circumstances.

## £1,000 incentive

An employer can receive a £1,000 cash incentive to hire you as an apprentice if you are:

- aged 16-18 years OR
- aged 19-24 years with an education, a healthcare plan (EHC) or if you're a care-experienced learner.

The payment will be halved, with £500 paid to your employer by the training provider **after 90 days** on your apprenticeship, while the final £500 is paid to your employer after completing **a full 12-month apprenticeship**.

## Full employer pay

If your employer is a levy-paying employer, they must pay the full apprenticeship fee themselves, which is drawn directly from their levy account. Any apprenticeship must be registered on your employer's Digital Apprenticeship Service account.

If your employer has fully utilised their funds, they will be required to pay 5% of the outstanding fee.

## Co-investment (5% employer pay)

Your employer must pay 5% of your apprenticeship fee (with the government paying the other 95%) if:

- you're a new apprentice aged 21 or over on your first day of learning.
- your levy-paying employer has used up their full levy provision.

## Full government funding

The full cost of your apprenticeship will be covered by the government if:

- you're a new apprentice aged 16-21 years (until the day before your 22<sup>nd</sup> birthday) on your first day of learning.

Full details are provided in the Service Level Agreement signed by your employer when they choose you to be their apprentice.





# BECOMING AN APPRENTICE EMPLOYER WITH NEWCASTLE COLLEGE

Just like you follow a set process to become an apprentice at Newcastle College, your employer will also follow a step-by-step path to recruiting you as their apprentice. The recruitment process for your employer is as follows:

## 1 Initial contact

An employer contacts Newcastle College via our website, by phone or email, or at an event to express interest in offering an apprenticeship. Our Business Development Team will call back **within 72 hours** to support the employer in creating a job description for their desired role, confirming their entry requirements and gathering essential documents.

## 2 Workplace visit

A member of our Business Development Team will visit the employer at their workplace to evaluate its suitability to provide you with an apprenticeship. With support and advice from our Business Development Team, the employer will complete an **Employer Initial Assessment** during this visit to make sure they can help you build the knowledge, skills and behaviours you'll need to progress.

## 3 Digital Apprenticeship Service

Once the employer passes the workplace visit, our Business Development Team will email them to set up a **Digital Apprenticeship Service (DAS)** account, which is required before an employer can offer an apprenticeship.

## 4 Advertise the apprenticeship

After the DAS account is set up, Newcastle College will advertise the apprenticeship vacancy on our website and via the National Apprenticeship Service.

## 5 Your Assessment Day

After you have expressed interest in becoming an apprentice with Newcastle College, we will invite you to campus for an **Assessment Day** to make sure you have the knowledge, skills and behaviours your employer will need. We'll pass the profiles of any candidates we think are suitable for the apprenticeship onto the employer, who'll then decide who to invite for an interview.

## 6 Your candidate interview

If you pass the Assessment Day, you'll be invited to interview with the employer about their apprenticeship vacancy. The employer will choose their preferred candidate to offer an apprenticeship, which will be formalised when the employer signs a **Service Level Agreement** (on funding, their responsibilities as your employer and the full terms and conditions of the apprenticeship) using **Smart Assessor**.

## 7 Your Enrolment

Our Business Development Team will confirm the Service Level Agreement is signed, then will invite you and your employer onto campus to complete the sign-up process for your apprenticeship. This process may take **up to three hours**, during which time you can both ask any questions you have about your apprenticeship with us.

## 8 Your apprenticeship begins!

You'll attend your first day release with your employer and legally become an apprentice in your chosen business. At this point, you and your employer will also receive copies of our **Enrolment Form**, which further outlines the details of the apprenticeship.





# Employer Profile

**Business:**  
Port of Blyth Training Services



I've found having an apprentice to be really beneficial to our business. It brings young people with fresh ideas and a whole host of new experience into my team. I would strongly recommend getting an apprentice, since it's a great way to expand your team with the support of Newcastle College – to help them to grow, develop and fit into your team and become a valuable employee.

**Olivia Smith**  
Port of Blyth Training Services



My apprenticeship with Newcastle College has absolutely opened doors for me. My tutors share lots of fantastic advice, which benefits me massively since I can put my knowledge into practice. I've made friends for life and gained invaluable knowledge and experience within the industry, which has led me to go on to study a degree apprenticeship in Digital Marketing fully funded by my employer next year!

**Niamh Dougan**  
L3 Business Administrator Apprentice

# Employer Profile

**Digital:**  
Waterstons Limited



Working with Newcastle College feels like a real partnership where we support each other to get the most out of our apprentices so they achieve their true potential. Having apprentices means our existing staff have more flexibility to visit clients, upskill and develop themselves, while we also get some amazing, fully-trained talent that understands our company's culture and values. Our past apprentices are now doing amazing work at every level of our business, in the UK and beyond!

**Phil Rhind**  
Waterstons Limited



The best thing about a degree apprenticeship compared to a standard degree course is that you can learn on the job as well! I spend four days a week in the office, earning a wage while learning from my colleagues and peers - the hands-on style of learning I get at work gives me loads of real-world experience to draw from when I do my degree assignments for Newcastle College University Centre.

**Aran Baker**  
L6 Digital and Technology Solutions Degree Apprentice



# Employer Profile

Energy:  
WD Close



Newcastle College is a well-established education provider within the North East who secure the best industry placements for their high calibre students. Their team has a wide skillset that can be adapted to suit our specific needs, and their apprentices become our young, hungry workforce, which plants the seeds for our business to grow and adapt into the future.

**Craig Playford**

*WD Close*



# Employer Profile

Engineering:  
Smulders UK



Newcastle College is a trusted partner with a proven track record in delivering high-quality apprentices to numerous companies for many years. Their Apprenticeship Team is always ready to help with questions and provide support, and their talented young apprentices help us retain the skills we need for the future while investing in the development of our existing workforce.

**Stijn Sterck**

*Smulders UK*





# Employer Profile

Hair:  
Gallery108



We chose to work with Newcastle College because their Apprenticeship Team is easy to communicate with and they fully support our business and our apprentices. From day one, our apprentices bring so much to the table – they're fully involved with all aspects of the salon, they build relationships with our clients immediately, and they're often ahead of us with the hairdressing technology they use and social media trends!

**Rebecca Watson**

*Gallery108*



# Employer Profile

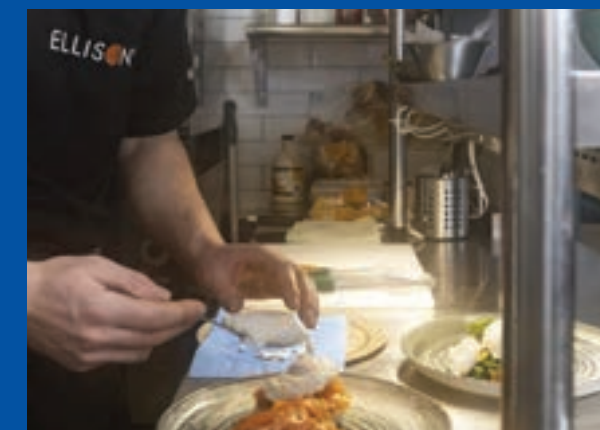
Hospitality:  
Ellison's of Low Fell



Bringing a Newcastle College apprentice into our business has brought a lot of benefits, since our apprentice has been able to grow their skills in a wide variety of areas tailored specifically to our business needs, all while working in a fast-paced environment. That gives our apprentice the skills they'll need for their future career in industry but having them work with us also increases our productivity in a big way. Our apprentice knuckles down, is always willing to learn new skills and techniques and puts 100% effort into all the work they do, every single day.

**Ryan Lemmon**

*Ellison's of Low Fell*



# Our Apprenticeships

## AUTOMOTIVE

### MOTOR VEHICLE SERVICE AND MAINTENANCE TECHNICIAN (LIGHT VEHICLE) STUDY LEVEL: L3

**DURATION: 36 MONTHS + 3 MONTHS FOR END POINT ASSESSMENT (EPA)**

#### Overview

Our Motor Vehicle Service and Maintenance Technician (Light Vehicle) apprenticeship will teach you how to service and repair light vehicles, such as cars and vans. You'll work either in a dealership focused on a particular manufacturer, or an independent garage which deals with different makes of vehicle.

This apprenticeship will help you to build a range of new skills, including procedures to set up a component (such as clutch and height adjustment), using a wide range of diagnostic and testing equipment, removing and fitting timing belts, connectors, tyres and handling fluids, and removing hoses, belts, gaskets, bearings and other vehicle parts. This apprenticeship also covers hybrid and electric vehicle operation.

Your apprenticeship tutors on this programme are industry practitioners who will make sure that you'll develop the key transferable skills relevant to the modern business.



click  
here

For more information about this apprenticeship

## BUSINESS

### BUSINESS ADMINISTRATOR STUDY LEVEL: L3

**DURATION: 15 MONTHS + 3 MONTHS FOR END POINT ASSESSMENT (EPA)**

#### Overview

If you're looking to build a highly transferable set of knowledge, skills and behaviours applicable to all areas of business, our Business Administrator apprenticeship is for you. Learn about small and large-scale business models in the public, private and charity sectors, as well as how to develop, implement, maintain and improve administrative services while working independently and in a team. By developing these key attributes, you'll support your own progression towards management responsibilities.

You'll be expected to deliver your responsibilities efficiently and with integrity, showing a positive attitude. Our Business Administrator apprenticeship requires strong written and verbal communication and a proactive approach to developing new skills. On this apprenticeship, you'll be expected to show initiative, manage your timetable and priorities, demonstrate your problem-solving and decision-making skills and show potential for managerial roles by mentoring and coaching others.

You'll attend Newcastle College Business Academy one full day per week on this apprenticeship. In addition, you'll also be expected to complete additional coursework, meeting the requirement of 20% off-the-job training.

### CUSTOMER SERVICE PRACTITIONER STUDY LEVEL: L2

**DURATION: 12 MONTHS + 3 MONTHS FOR END POINT ASSESSMENT (EPA)**

#### Overview

As a Customer Service Practitioner apprentice at Newcastle College, you'll learn how to provide a high-quality service to customers in line with organisational customer service standards and strategy, within appropriate regulatory requirements. You'll deliver these services from your workplace digitally or by going out into the home locality of customers, either on a one-off or regular basis. This could mean dealing with orders and payments, offering advice and support, performing meet-and-greet, sales, service recovery and after care, or gaining market insight by measuring customer satisfaction.

On this apprenticeship, you'll also learn how your actions influence the customer experience. Apprentices will demonstrate excellent customer service skills and behaviours, as well as knowledge of products and services when delivering to customers.

You'll spend one full day per week attending Newcastle College Business Academy. In addition, you'll also be expected to complete additional coursework, meeting the requirement of 20% off-the-job training.



click  
here

For more information about this apprenticeship



click  
here

For more information about this apprenticeship



## CONSTRUCTION

### BRICKLAYER STUDY LEVEL: L2

**DURATION: 24 MONTHS + 3 MONTHS FOR END POINT ASSESSMENT (EPA)**

#### Overview

Our Bricklayer apprenticeship will equip you with the skills and knowledge you'll need to work effectively in the construction industry.

This apprenticeship will teach you to lay bricks and blocks (as well as other types of building components) in mortar to construct and repair walls, foundations, partitions, arches and other structures. You'll also be able to refurbish brickwork and masonry on restoration projects. As an apprentice bricklayer, you'll work on a range of sites and projects which reflect the many areas of the construction industry, including large commercial developments, new builds in housing, alternations, extensions and restorations.

Our apprenticeship tutors at Newcastle College are industry practitioners with years of experience in construction, meaning you'll develop key transferable skills that are relevant to modern businesses. Your employer may also tailor the units of your programme of study to suit the specific needs of their organisation.



**click  
here**

For more information about this apprenticeship

### CARPENTRY AND JOINERY STUDY LEVEL: L2

**DURATION: 24 MONTHS + 3 MONTHS FOR END POINT ASSESSMENT (EPA)**

#### Overview

Our Carpentry and Joinery apprenticeship will teach you how to work with building materials (most often wood) to create and install building components. On this programme, you'll learn how to shape and cut materials, install finished materials (such as partitions, doors, staircases, window frames, moulding and timber floor coverings) and build structural components such as floor joists and roofs.

As an apprentice carpenter and joiner, you're expected to carry out work safely, using the appropriate tools to produce work to the quality specified.



**click  
here**

For more information about this apprenticeship

### INSTALLATION AND MAINTENANCE ELECTRICIAN STUDY LEVEL: L3

**DURATION: 48 MONTHS + 6 MONTHS FOR END POINT ASSESSMENT (EPA)**

#### Overview

As an Installation and Maintenance Electrician apprentice, you'll learn how to install, maintain and repair electrical systems in industrial, commercial and domestic environments, in both indoor and outdoor settings.

The role of an electrician will involve you working with electrical equipment and systems. These systems may include switchboards, motors, cables, fuses, thermal relays, fault current protection switches, heating, lighting, air conditioning and metering equipment, as well as crime and fire alarm systems and renewable energy technologies.

You must be comfortable working competently on your own without immediate supervision, completing any tasks in the most efficient and economical manner.



**click  
here**

For more information about this apprenticeship

### PAINTER AND DECORATOR STUDY LEVEL: L2

**DURATION: 24 MONTHS + 3 MONTHS FOR END POINT ASSESSMENT (EPA)**

#### Overview

On your Painter and Decorator apprenticeship with Newcastle College, you'll work in domestic and commercial properties to decorate and protect buildings. These properties may include houses, schools, offices, hospitals, factories and construction sites. Working internally or externally, you'll operate independently and as part of a team, applying water-borne or solvent-borne paint coatings and wall coverings.

You should have a good working knowledge of paint coatings and wall coverings, and you should understand and comply with statutory, safety and environmental requests. You'll be responsible for your own work and so be expected to achieve a high-quality finish at an appropriate pace. All Painter and Decorator apprentices should also be good problem-solvers and communicators, able to interact effectively with your colleagues, clients and associated trades.



**click  
here**

For more information about this apprenticeship

## PLASTERER STUDY LEVEL: L2

**DURATION: 24 MONTHS + 3 MONTHS FOR END POINT ASSESSMENT (EPA)**

### Overview

As a Newcastle College Plastering apprentice, you'll learn how to apply layers of plaster onto walls, floors and ceilings, as well as the requisite skills for any dry lining projects you may undertake in your future career. Although you may choose to specialise in dry lining, you must have a thorough grasp of the knowledge and skills needed to plaster effectively as well. Plastering serves both an aesthetic and protective function by making buildings more robust and you'll learn to consider both these purposes during your apprenticeship.

Our apprenticeship tutors on this programme are industry practitioners with years of experience in the construction industry, meaning you'll develop key transferable skills which are relevant to your job role.

## PLUMBING AND DOMESTIC HEATING TECHNICIAN STUDY LEVEL: L3

**DURATION: 48 MONTHS + 3 MONTHS FOR END POINT ASSESSMENT (EPA)**

### Overview

A Plumbing and Domestic Heating Technician apprentice at Newcastle College will plan, select, install, service, commission and maintain all aspects of plumbing and heating systems. These services will be delivered through working inside or outside of a property.

To be successful on this apprenticeship, you should demonstrate strong customer service skills, being approachable, enthusiastic and a clear communicator, as well as being tidy and respectful because you'll often find yourself working in a customer's home alongside building sites. You should also be comfortable working independently and as part of a team, which will help you to develop the essential transferable skills which are vital to your career progression.

## ROOFER STUDY LEVEL: L2

**DURATION: 24 MONTHS + 3 MONTHS FOR END POINT ASSESSMENT (EPA)**

### Overview

On your Roofer apprenticeship with Newcastle College, you'll be equipped with all the skills and knowledge you'll need to work in the roofing trade. As an apprentice, you'll work on building sites, as well as in domestic or commercial premises, delivering such services as slate installation, tile roof coverings and related products to both new and existing buildings.

Our apprenticeship tutors on this programme of study are industry practitioners with years of experience in the construction industry, meaning you'll develop the key transferable skills that are relevant to your job role.



**click  
here**

For more information about this apprenticeship



**click  
here**

For more information about this apprenticeship



**click  
here**

For more information about this apprenticeship



My tutor is brilliant, if I ever have any queries on a job or if I'm lone-working and I need some support, he's there! The facilities are also great at college, since I can use practice roofs to do the whole end-to-end process using any different techniques I want to try out, before using them on a live job. Thanks to my apprenticeship with Newcastle College, I've proven I'm more than 'just' an apprentice – I'm capable of creating really high-quality, skilled work.

**Bobby Young**  
L2 Roofer Apprentice



## DIGITAL

**CREATIVE DIGITAL DESIGN  
PROFESSIONAL (INTEGRATED DEGREE)  
STUDY LEVEL: L6**

**DURATION: 36 MONTHS + 6 MONTHS FOR END  
POINT ASSESSMENT (EPA)**

**Overview**

Our BA (Hons) Creative Digital Design Professional (Integrated Degree) apprenticeship is designed to equip you with the creative and technical skills that are in high demand in the digital design and creative industries. This role will involve learning how to design compelling digitally enabled solutions for audiences across various sectors and contexts, while staying up to date on emerging digital technologies and trends.

On this degree apprenticeship, you'll implement design concepts to develop and communicate new products and to provide design solutions using digital design technologies. To be successful in this programme of study, you should be a confident, competent and capable design professional able to operate in a range of related roles.

**DIGITAL AND TECHNOLOGY  
SOLUTIONS (INTEGRATED DEGREE)  
STUDY LEVEL: L6**

**DURATION: 36 MONTHS + 6 MONTHS FOR END  
POINT ASSESSMENT (EPA)**

**Overview**

This BSc (Hons) Digital and Technology Solutions (Integrated Degree) apprenticeship is perfect if you're looking for a career in the digital and technology sectors. This apprenticeship covers the key concepts and competencies in digital and technology management and is designed to focus on both the practical and core skills for the workplace.

This degree apprenticeship covers four of the main streams of digital technologies: Cyber Security Analytics, Data Analytics, Network Engineering and Software Engineering.

By gaining an Honours Degree through a degree apprenticeship, you'll gain the knowledge, skills and insight that are demanded by employers in industry today. You'll be guaranteed to be work-ready upon graduation from this programme of study, as you'll learn the skills needed in the workplace through contextualised teaching and collaboration with your employer.



**click  
here**

For more information about this apprenticeship



**click  
here**

For more information about this apprenticeship

## ENERGY

**METAL FABRICATOR  
STUDY LEVEL: L3**

**DURATION: 36 MONTHS + 3 MONTHS FOR END  
POINT ASSESSMENT (EPA)**

**Overview**

As a Metal Fabricator apprentice, you'll weld and fabricate metal structures and components. Based at our purpose-built Energy Academy and working mainly in manufacturing plants or at construction sites, you'll use a variety of tools to construct metal-based assembly components.

To be successful on this apprenticeship, you'll need to be able to take a product from its initial design to its finished components ready for assembly. To achieve this goal, you must combine technical skills with coordination and attention to detail, with the end goal of creating components and products that meet the designer's specifications.



**click  
here**

For more information about this apprenticeship

**PLATE WELDER  
STUDY LEVEL: L3**

**DURATION: 36 MONTHS + 3 MONTHS FOR END  
POINT ASSESSMENT (EPA)**

**Overview**

This advanced apprenticeship standard is designed to teach you how to manually weld plate and structural components to high standards of quality. This will involve fabrication, construction or repair of fabricated plate assemblies, extrusions and structural components (e.g. Channel, H-Beams or I-Beams) often used to fabricate larger components and assemblies.

On this apprenticeship, you'll gain workplace-specific knowledge, skills and behaviours relevant to the welding industry, alongside delivery at the Newcastle College Energy Academy to teach you the fundamental knowledge and skills you'll need within the workplace.



I'm so glad I got a second chance to find the right career for me with Newcastle College, I can't imagine doing anything else now! My tutors are so passionate and dedicated to unlocking our potential, and they bring a wealth of knowledge with them from their own welding careers. If you've got a passion for creativity, for making things, just give it a go!

**Courtney Newton**

*L3 Plate Welder Apprentice*



**click  
here**

For more information about this apprenticeship

## ENGINEERING

### MACHINING TECHNICIAN STUDY LEVEL: L3

**DURATION: 36 MONTHS + 3 MONTHS FOR END  
POINT ASSESSMENT (EPA)**

#### Overview

This advanced apprenticeship standard is designed to teach you how to produce complex, high-value, low-volume components or assemblies, either in full or in part. You'll use machines, equipment or systems to the required specifications, such as with turbines, cranes, gearboxes, production lines, rigs and platforms. Fitters may typically have mechanical, electrical or electronic control systems, alongside pipe fitting or instrumentation bias.

On this apprenticeship, you'll gain workplace-specific knowledge, skills and behaviours relevant to your chosen pathway, alongside a mandatory qualification which will provide you with the fundamental engineering knowledge you'll need within the industry.

### MAINTENANCE AND OPERATIONS ENGINEERING TECHNICIAN STUDY LEVEL: L3

**DURATION: 36 MONTHS + 6 MONTHS FOR END  
POINT ASSESSMENT (EPA)**

#### Overview

This advanced apprenticeship standard is designed to teach you how to maintain the safety, integrity and effective operation of plants and equipment in a range of industries which are part of (or have activities which are part of) the broader national infrastructure engineering sector. On this apprenticeship, you'll undertake installation, testing, servicing, removal, replacement, maintenance and repair of a range of equipment as part of planned preventative and reactive maintenance programmes.

As a Maintenance and Operations Engineering Technician apprentice, you'll gain workplace-specific knowledge, skills and behaviours relevant to your chosen pathway, alongside a qualification which will provide you with the fundamental engineering knowledge you'll need within the industry.



**click  
here**

For more information about this apprenticeship



**click  
here**

For more information about this apprenticeship



I had been looking for an electrical apprenticeship for a while before I saw this one. I was glad it was with Newcastle College because I had already studied here on a Level 3 course for three years. It's a good college and the tutors are very helpful if you're stuck on anything. I love working for Smulders and am looking forward to having a long career working for them.

**Kieron Denley**

*L3 Maintenance and Operations Engineering  
Technician Apprentice*





I've always learned better doing practical work, so I really enjoy how my apprenticeship is giving me more experience of working on the salon floor and building relationships with real clients, rather than styling heads! Thanks to the support I've received from my tutor and my employer, I feel like I'm well on my way to becoming a fully qualified hairdresser who is fully confident in all aspects of hair.

**Laila Batcheldor**

*L2 Hair Professional Apprentice*

## HAIR

### HAIR PROFESSIONAL STUDY LEVEL: L2

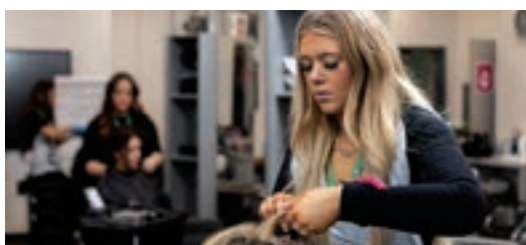
**DURATION: 24 MONTHS + 3 MONTHS FOR END POINT ASSESSMENT (EPA)**

#### Overview

This Hair Professional apprenticeship covers all aspects of hairdressing at a basic and advanced level. As a Hair apprentice, you'll be able to shampoo and condition hair, cut hair using a range of techniques, style and finish hair to create a variety of looks and colour and lighten hair for ladies and men.

Successful Hair Professional apprentices will also need to carry out consultations with clients, demonstrating your professionalism, values, behaviours, communication skills and the safe working practices associated with your role while doing so. You must also be able to work without supervision to a high level of precision, showing exceptional client care skills.

Our apprenticeship tutors on this programme of study at Newcastle College are industry practitioners with years of experience in the hair and beauty industry, meaning you'll develop key transferable skills that are relevant to modern business. Your employer may also tailor units on this apprenticeship to suit the needs of your host organisation.



**click  
here**

For more information about this apprenticeship

## HOSPITALITY

### COMMIS CHEF STUDY LEVEL: L2

**DURATION: 12 MONTHS + 4 MONTHS FOR END POINT ASSESSMENT (EPA)**

#### Overview

On our Commis Chef apprenticeship at Newcastle College, you'll learn how to support the kitchen to prepare, cook and finish a range of items. You'll work as part of a kitchen brigade, rotating around each section of the kitchen to ensure the quality of the food produced meets brand, organisational and legislative requirements, including the completion of food safety management documentation. In addition, you'll learn to receive, check and correctly store deliveries, as well as checking and reporting food items and stock levels and taking responsibility for maintaining high standards of personal, food and kitchen hygiene in your section.

All our Commis Chef apprentices will attend Newcastle College for one full day per week. In addition, you'll also be expected to complete additional coursework, meeting your apprenticeship requirement of 20% off-the-job training.



**click  
here**

For more information about this apprenticeship



I think that every day's a learning day when you do an apprenticeship with Newcastle College – I really enjoy the fluidity that comes from being able to earn a wage by working while studying at the same time, all on the same page, which has sharpened my skills and made my time as an apprentice really enjoyable.

**Matt Cooper**

*L2 Commis Chef Apprentice*

# HOW TO FIND US

## By train or Metro

You can take a train or Metro to Central Station which is only a five to ten-minute walk away from our Rye Hill campus. Just turn left out of Central Station and pass Centre for Life. Continue past the Discovery Museum until you come to our campus. A recommended walking route is available from our website. Visit [www.ncl-coll.ac.uk/how-to-find-us](http://www.ncl-coll.ac.uk/how-to-find-us)

## By car from the North or South

Take the A1 and follow directions to Newcastle and then pick up the A189 over the Redheugh Bridge. As you cross the Redheugh Bridge, move into the left hand lane and turn left immediately after you have crossed the bridge. At the first roundabout turn right into the Rye Hill campus car park. Parking is free.\*

## By car from Newcastle City Centre

Follow signs to Central Station, or Blaydon A695. Once past the station, bear left at the traffic lights beside the Centre for Life, go straight on at the next traffic lights and turn right at the next traffic lights into Railway Street. Pass under the Redheugh Bridge approach road, bend right with the road and then go straight on at the first roundabout on Scotswood Road into the College car park. Parking is free.

## Once on campus

For general enquiries, make your way to Student Services.

Newcastle College  
Armstrong House  
Rye Hill Campus  
Scotswood Road  
Newcastle upon Tyne  
NE4 7SA

**0191 200 4000**  
**enquiries@ncl-coll.ac.uk**  
**ncl-coll.ac.uk**

## campuses can be found at:

Automotive Academy  
Unit 36 Invincible Drive  
Armstrong Industrial Park  
Newcastle upon Tyne  
NE4 7HX

Energy Academy  
Hadrian Road  
Wallsend  
NE28 6HH

\* Subject to availability



**This guide and other course information is available in alternative formats and large print. Call 0191 200 4000.**

## Safeguarding

We are committed to Safeguarding and ensuring all learners experience a secure, safe and welcoming environment in which they can fulfil their potential. Specific policies and procedures are in place to safeguard young people and vulnerable adults; these are robust and are reviewed regularly. Procedures are in place to take all reasonable measures to ensure risk is minimised and appropriate action is taken to address any welfare concerns.

Newcastle College welcomes diversity in its student population – valuing differences in race, gender, sexual orientation, disability, religion or belief, class and age. We actively oppose discrimination, aim to remove all conditions that put people at a disadvantage, strive to improve access and to provide outstanding support. We are committed to providing an inclusive learning environment. We have produced a Single Equality Scheme which sets out our response to statutory obligations and our approach to the active promotion of equality and diversity. Please discuss your support needs with us and we will make every reasonable effort to make adjustments to help you succeed.

## Disclaimer

Newcastle College will take all reasonable steps to provide the educational services and courses as described in this prospectus and in further documents. However, it does not guarantee the provision of such services. The provision of courses is dependent on there being sufficient demand to make their operation viable. At the time of publication (January 2025) all course titles and information were correct.

## NCG Guarantee

Newcastle College is proud to be part of NCG, one of the country's leading college groups.

We are one of seven colleges across the country that make up NCG, meaning we're a key part of providing education and training to learners, apprentices and employers across the UK.

Together, we share expertise, support each other to grow, help each other to innovate and accomplish real change for individuals, communities and economies across the country.

## Student benefits

Students studying at any of our colleges benefit from the **NCG Guarantee**. This guarantee gives all our students access to a range of tools and initiatives centred around a core set of principles. Our courses, additional support services and enrichment activities will equip you with a wider set of skills, all of which aim to make you more employable.

**Put simply, the NCG Guarantee gives students access to additional activities, resources and initiatives to help you achieve your ambitions and career goals.**

The NCG Guarantee is centred around:

- Community
- Digital
- Employability
- Enterprise
- Mental Fitness.

Throughout your time with us you will be involved in a range of projects and initiatives focused on these principles. Coupled with excellent teaching and learning, you will complete your course with a unique set of skills which help set you up for your future.





# GET A HEADSTART IN YOUR CAREER

Newcastle College  
Rye Hill Campus  
Scotswood Road  
Newcastle upon Tyne  
NE4 7SA

0191 200 4000  
[apprenticeships@ncl-coll.ac.uk](mailto:apprenticeships@ncl-coll.ac.uk)  
[employers@ncl-coll.ac.uk](mailto:employers@ncl-coll.ac.uk)  
[ncl-coll.ac.uk](http://ncl-coll.ac.uk)

