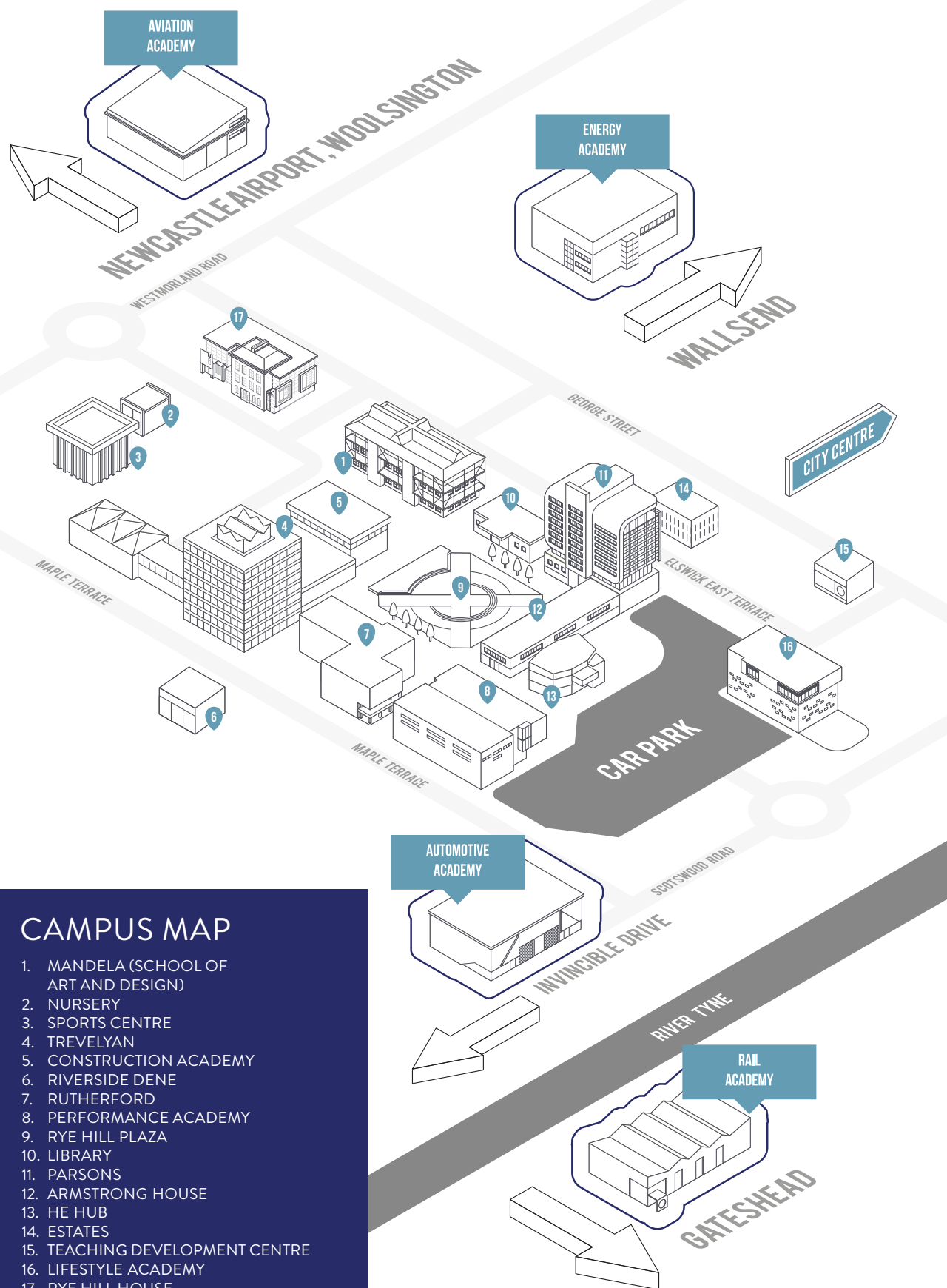


NEWCASTLE  
COLLEGE  
UNIVERSITY  
CENTRE

UNDERGRADUATE  
PROSPECTUS  
2024





## CAMPUS MAP

1. MANDELA (SCHOOL OF ART AND DESIGN)
2. NURSERY
3. SPORTS CENTRE
4. TREVELYAN
5. CONSTRUCTION ACADEMY
6. RIVERSIDE DENE
7. RUTHERFORD
8. PERFORMANCE ACADEMY
9. RYE HILL PLAZA
10. LIBRARY
11. PARSONS
12. ARMSTRONG HOUSE
13. HE HUB
14. ESTATES
15. TEACHING DEVELOPMENT CENTRE
16. LIFESTYLE ACADEMY
17. RYE HILL HOUSE

# A DEGREE WITH A DIFFERENCE

OUR PROSPECTUS IS INTERACTIVE!  
YOU CAN CLICK OUR QR CODES TO FIND OUT  
MORE INFORMATION ABOUT DEGREES AT  
NEWCASTLE COLLEGE UNIVERSITY CENTRE



# CONTENTS

Principal's Welcome	5
Our Degrees	6
A Degree that Works for You	8
A Degree with a Difference	10
Science, Technology, Engineering, Mathematics	12
Fantastic Facilities	14
Investing in Your Future	18
Student Wellbeing	20
Keeping You Safe	22
Your Student City	24
Student Life on Campus	26
Students in Partnership	28
Steppin' Up	30
Student Support	32
Open Events	34
Get Work Ready	36
Tuition Fees	37
Part-Time Study	39
Use Your Experience	40
Education and Teacher Training	42
Postgraduate Studies	45
International	46
Graduation	48
How to Apply	50
<b>COURSES</b>	
Aesthetics and Make-Up	52
Art and Design	56
Aviation	60
Business	64
Childcare	68
Computing	72
Criminology, Policing and Criminal Law	76
Digital Arts	80
Energy	86
Engineering	90
Health and Social Care	96
Hospitality and Tourism	100
Music	104
Performing Arts	108
Rail and Civil	112
Sport and Exercise	116
UCAS Tariff	120
Entry Requirements	121
What Else Do We Offer?	122
Contact Us	124



  
 10,000 GRADS  
 in  
 10 YEARS



WE WELCOME YOU



Hello and welcome to Newcastle College University Centre. Now is such an exciting time for you, and I know that you have lots of decisions to make as you take your next big step towards your future. I'm delighted that you're considering studying a degree with us and I hope you decide that we're the right place for you.

Supporting you through your studies and ensuring you have a brilliant student experience comes first here. Your time here will go beyond your studies and by choosing Newcastle College University Centre, you'll become part of a diverse and vibrant community, benefiting from smaller class sizes and unrivalled student support from a team who truly care about your wellbeing.

Preparing you for your future career is at the heart of everything we do. Whatever you choose to study, you'll benefit from our strong industry links, fantastic facilities and opportunities to work with employers and industry experts, which will help you to be ready for the world of work when you graduate.

You couldn't choose a better time to join us. We've recently invested £2million into brand new facilities across Aviation, Energy, Engineering and Digital Technologies and have plans to invest another £6million over the next three years, ensuring you have access to some of the best equipment around.

During your degree, we'll give you the tools you need to develop your skills and experience and you'll be challenged, inspired and supported to pursue your passion, harness your talent and achieve your full potential.

I hope to be welcoming you onto campus very soon.

**Scott Bullock**  
Principal





At Newcastle College University Centre we offer degree courses to help you realise your career aspirations. Industry-experienced tutors, exciting work placements, live briefs from industry and guest lectures are just some of the things you may experience when you study with us. We continually refresh and adapt the content of our degrees to ensure you study course content that meets the demands of industry.

## CERTIFICATE IN HIGHER EDUCATION (CertHE)

This higher education qualification is awarded after one year of full-time study. A Certificate in Higher Education aims to equip you with the knowledge, academic skills and contextualised understanding of theory, practice, trends and developments within the chosen subject area.

## FOUNDATION DEGREES

A Foundation Degree is a two-year career focused qualification that is equivalent to the first two years of an Honours Degree. The aim of a Foundation Degree is to provide you with the employment skills and professional knowledge that you will need to work in your chosen sector.

After completing your two-year degree, you will have acquired a whole range of skills that will help you when it comes to finding employment. Alternatively, you may wish to progress onto a one-year Honours Degree (Top-Up) at Newcastle College University Centre.



## HONOURS DEGREES

We create, design and validate our own degree programmes, just like a university. We have a number of three-year Honours Degrees in a variety of subject areas, all of which aim to set you up for employment. With an Honours Degree, you will study for three years with us and on completion you can start your career in industry or pursue postgraduate studies.

## HONOURS DEGREE (TOP-UPS)

We offer a wide range of one-year Honours Degree (Top-Ups), which offer natural progression from a Foundation Degree. These courses are a great way to build on what you have learnt during your Foundation Degree as well as achieving an Honours Degree qualification, to help you stand out in the competitive job market. Many of the Top-Up degrees that we offer allow you to specialise in a specific area, giving you a real edge on other graduates.

## DEGREE APPRENTICESHIPS

A Degree Apprenticeship is typically a three-year work-based qualification that combines invaluable on-the-job work experience with an Honours Degree. Designed in partnership with employers, you will be in full-time employment and combine working with studying at Newcastle College University Centre. Degree Apprenticeships are a professional pathway for your career development. If you are in employment and wish to discover the benefits of a Degree Apprenticeship, get in touch with our Apprenticeships Team by emailing [apprenticeships@ncl-coll.ac.uk](mailto:apprenticeships@ncl-coll.ac.uk)





# A DEGREE THAT WORKS FOR YOU

**At Newcastle College University Centre we pride ourselves on delivering high-quality practical education, enabling you to develop the professional skills demanded by industry. Our University Centre offers you a real alternative to university where you can study university-level degree courses that are designed in collaboration with employers. You'll be taught in smaller class sizes in specialist teaching facilities and have numerous opportunities to engage with employers to develop your professional skills.**

## STRONG INDUSTRY LINKS

Our University Centre has strong links with local organisations and partners in the region, meaning you directly benefit from these relationships. Access to industry is a key focus for us and as a student you will benefit from valuable work placement opportunities, live briefs set by employers as well as industry insight from guest speakers. Many of our graduates have gone on to forge successful careers in the region due to these strong industry links.

[ncl-coll.ac.uk](http://ncl-coll.ac.uk)



## RESEARCH AND SCHOLARLY ACTIVITY

We are proud of our vibrant academic community and place real emphasis on research, scholarship and professional practice. Throughout your time studying at Newcastle College University Centre, you will be offered numerous opportunities to undertake research projects, co-produce with peers and staff or undertake initial research-like activities within your discipline and across the University Centre.

## OUTSTANDING STUDENT SUPPORT

Unlike a traditional university, our students are usually taught in smaller class sizes, which means you will benefit from more one-to-one support from your course tutors. We have a dedicated team of Academic Support Coaches who are there to help, guide and support you to make the most of your academic studies. Our Higher Education Support Team work with students who have a disability, specific learning difficulty, mental health difficulty or long-term medical condition. The team is there to support you to achieve, regardless of your circumstances.

## NOT JUST EXAMS

At Newcastle College University Centre, we recognise that not everyone learns in the same way. We also understand that exams aren't for everyone and we strive to offer a full range of assessment methods where possible, from group projects to portfolios, presentations to reports, which mirror the tasks and projects you will undertake in your chosen career.

## INTERNATIONAL COMMUNITY

We have a thriving international community with a wide range of nationalities studying within our city centre campus, putting the North East firmly on the map as a top destination to study higher education.





# A DEGREE WITH A DIFFERENCE

**We are committed to ensuring you have an enjoyable and rewarding experience whilst studying at the University Centre. We pride ourselves on offering you an alternative university experience, so that you can really thrive and achieve your potential.**

## SMALLER CLASS SIZES

You will learn in a smaller class size compared to a university setting, benefiting from more one-to-one tutor support. Our students say that they enjoy learning in smaller class sizes as they get to know their tutor and classmates better and feel comfortable speaking out in class.

## PRACTICAL LEARNING

Unlike a traditional university you will be taught in a hands-on way, developing your skills in environments which replicate the workplace. This means that you gain the skills required by industry, ensuring you graduate ready for the world of work. Take a look at our fantastic facilities and learning environments on page 14.

## STUDENT SUPPORT

Our University Centre tutors offer support both in and out the classroom. During classes, workshops and one-to-one tutorials our staff are committed to supporting you in your studies. Our tutors really care and take the time to get to know you in order to fully support you to do your best and to fulfil your ambitions.

## DEDICATED SPACES FOR HIGHER EDUCATION

Our University Centre offers dedicated spaces for higher education students. Our HE Hub is an ideal place for you to study, socialise or collaborate with friends. You can also study in our new HE learning space on the ground floor of the HE Hub, with PCs and seating space – perfect for group projects. The tenth floor of our Parsons Building is a great place to study with stunning views of the city too. It is fully equipped with PCs, break-out areas for group work and a chill-out area to relax in between studying. As a degree student, you will also have access to laptops and tablets for use on campus.



## STUDENT PROFILE

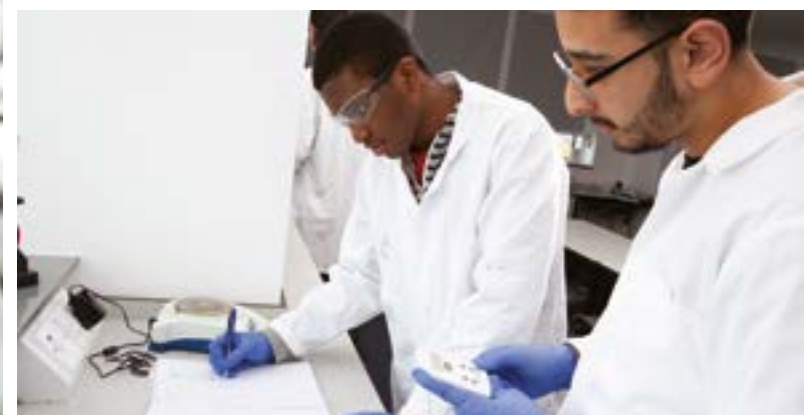
**PHILLIP HO**  
HOSPITALITY STUDENT

Studying my degree at Newcastle College University Centre means I've got great qualifications to back up the skills I've developed, the knowledge I've gained and the experiences I've had along the way, as well as having a top-notch CV for when I start applying for jobs.



10,000 GRADS  
in  
10 YEARS





# STEM

Science Technology Engineering Mathematics

AT NEWCASTLE COLLEGE  
UNIVERSITY CENTRE



STEM skills are highly desirable with UK-wide employers, with STEM graduates more likely to be working within innovative UK enterprises. STEM has been recognised as a major area for supporting economic development within the North East, sitting at the heart of the North East Local Enterprise Partnership strategy for delivering a projected 100,000 extra jobs within the region by 2024.

Newcastle College University Centre offers a broad range of STEM-related courses, including Cyber Security and Mechanical Engineering.

## OUR INDUSTRY SUPPORTERS







# FANTASTIC FACILITIES

OUR FANTASTIC FACILITIES WILL GIVE YOU AN EXCEPTIONAL LEARNING EXPERIENCE IN AN ENVIRONMENT BUILT AROUND INDUSTRY. OUR FACILITIES REPLICATE REAL-WORKING ENVIRONMENTS TO GIVE YOU AN INSIGHT INTO WHAT IT IS LIKE TO WORK IN YOUR CHOSEN INDUSTRY.

## AVIATION ACADEMY

This impressive training venue is based at, and supported by, Newcastle International Airport and includes engineering workshops kitted out with the very latest equipment, such as an IT suite equipped with modern Computer Based Training (CBT) equipment, a 1,500m<sup>2</sup> aircraft hangar housing two Jet Provost, an avionics laboratory and a BAE Jetstream 31 aircraft. We also have our own Boeing 737 aircraft. Check out page 18 to see how we're investing in our Aviation facilities.



## ENERGY ACADEMY

This is a multi-partner, cross-regional facility based on the north bank of the Tyne. Our award-winning academy provides a centre for innovation, training and development for the energy sector with engineering workshops, Computer Aided Design (CAD) and the world's most advanced Immersive Hybrid Reality (iHR) offshore wind training facility, a virtual reality system to help train future engineers. Check out page 18 to see how we're investing in our Energy facilities.



FIND OUT MORE  
ABOUT OUR  
FANTASTIC FACILITIES



## LIFESTYLE ACADEMY

Our leading facility for Aesthetics and Make-Up, Hospitality and Tourism students is also home to The Retreat, our very own beauty salon and The Chefs' Academy, our award-winning AA College Rosette restaurant. These real-working environments help you to develop the skills and experience that employers are looking for in graduates.



## MANDELA (SCHOOL OF ART AND DESIGN)

A purpose-built centre for innovation and creativity, our Mandela Building is where our Art and Design and Digital Arts students hone their skills. We have fully-equipped drawing, painting and sculpture studios, fashion and Mac suites, textile workshops, two gallery spaces and a digital photography suite including the largest infinity scoop and tethered capture facilities in the North East. We also have our brand-new Digital Hub located here where our Computing students study. We have invested over £1million in the specially-built digital space, offering a state-of-the-art facility for our higher education students. Our facilities include classrooms, immersive technology labs and cyber security practical rooms, as well as a Powerwall. Our facilities are equipped with the latest software, hardware and network equipment, all of which meet industry standards. Check out page 18 to see how we're investing in our Digital facilities.



## PARSONS

This impressive facility is home to our Childcare, Health and Social Care degree students. Facilities include childcare training rooms, a specialist counselling suite and hospital simulation wards which offer you a real-working environment experience.



## RAIL AND CIVIL ENGINEERING ACADEMY

Newcastle College's Rail and Civil Engineering Academy is a specialist facility in Gateshead which replicates the environments you would find in the rail and civil engineering industries. Facilities include indoor and outdoor overhead lines, signalling and mechanical workshops, level crossing barriers, a soils laboratory and dedicated civil engineering learning environments.



## PERFORMANCE ACADEMY

Our award-winning Performance Academy is a unique creative hub and provides outstanding facilities, whether you are studying Music or Performing Arts. Facilities include a 200-seat theatre, music venue with professional standard sound, PA, monitoring and lighting, 4K TV studio with pre and post production, recording studios, radio station, acting and dance studios with sprung floors and media production rooms. The Performance Academy is also home to our student-run record label, Push Puzzle Records and Creative Agency.





# INVESTING IN YOUR FUTURE



**We're investing almost £6million over the next three years into our higher education facilities in Aviation, Digital, Energy and Engineering, providing you with leading-edge equipment to support your studies. This funding, awarded by the Office for Students (OfS), follows last year's investment of £2million into STEM facilities, bringing our total investment to almost £8million. We're committed to making sure you have a great learning experience with us, and this investment will give you the chance to train with even more industry-standard equipment than ever before, so you can be confident that you'll graduate with the skills and experience you need in your future career.**

Students in Aviation, Digital, Energy and Engineering will benefit from leading-edge teaching facilities from new electric vehicles, wind turbine nacelles, drones, robots, VR and XR software and even a new jet.

Investing in fantastic facilities is really important to us. We are committed to making sure our students graduate with industry experience, be it through our links to employers, learning with the very best equipment or from our industry-standard tutors.

## WHAT DOES THIS MEAN FOR OUR STUDENTS?

Newcastle College University Centre is here to prepare the North East's future workforce for a successful career here in the region.

We want to provide our students with life-changing opportunities through quality, higher technical education and the chance to train and study in sector-standard, leading-edge facilities.

With this funding our students can be confident that they will graduate with the skills and experience needed to become digitally enabled, and really be able to meet the needs of employers right across our region and beyond.

# WHAT NEW FACILITIES CAN I LOOK FORWARD TO?

Across four of our STEM areas, you can look forward to working with:

## AVIATION

- Avionic training simulators
- A new training aircraft with cockpit and operational gas turbine engines.

## DIGITAL

- A 4m 3D Powerwall for interacting with 3D models configured for cross-faculty use cases with XR (Immersive Technology) capabilities, XR film production software, CAD and BIM 3D visualisation solutions, a head and hand motion tracking system and a camera tracking system.

## ENERGY

- Solar photovoltaic systems
- Resources for sustainable building methods and retrofit
- An electric vehicle and new EV charge points
- A brand-new wind turbine training nacelle
- An autonomous inspection robot to support inspection in confined/dangerous places
- An industrial drone to support inspection of wind turbine towers and blades at height
- A Subsea inspection ROV (Remote Operated Vehicle) to support inspection of subsea wind structures.

## ENGINEERING

- Smart Robot Car Kits for digital programming
- Computational fluid dynamics (CFD) software
- An industrial robot
- FLUID SIM to design and test hydraulic and pneumatic circuits
- Siemens PLC including HMI
- A 3D Industrial Printer
- A CNC Lathe Machine.

FIND OUT MORE ABOUT OUR INVESTMENT IN FACILITIES





**Fika** 

# STUDENT WELLBEING

**At Newcastle College University Centre we take the wellbeing of our students seriously.**

As we have all experienced in the Covid-19 pandemic, making sure we know what support is available and where we can get help is really important. Sometimes you just want some tips on how to unwind or switch off from your studies, and sometimes you may feel like you need some more support.

That's why, as a student at Newcastle College University Centre, you'll have access to help and support throughout your studies. We want to make sure you have the best possible experience with us, and that includes supporting you and your wellbeing whilst you study with us.

FIND OUT MORE ABOUT OUR STUDENT SUPPORT



# MENTAL HEALTH AND WELLBEING SUPPORT

**We aim to provide every student with an outstanding experience. Our Central Support Service (CSS) offers a range of services including support around mental health from our dedicated Wellbeing Team who support, advise and provide guidance for students on their wellbeing.**

**This could include:**

- support for low level concerns or situational stress such as exam anxiety
- provision of an Inclusion Plan which advises on reasonable adjustments
- study assistance support on a one-to-one or small group basis
- signposting and liaising with external specialist services
- mental health first aid for students in distress.

**Newcastle College University Centre Teams Channel**

This specially-created channel on Microsoft Teams provides helpful advice for looking after your mental health (which you can access when you start your degree). As a degree student at Newcastle College University Centre, you will be able to access this channel and get tips on how to look after your mental health during your studies, as well as finding out who you can contact if you ever need extra support.

**Urgent Support**

If you ever feel like you need urgent assistance, we can provide contact details of organisations who can support you when in need. Your wellbeing is important to us, and as a student at Newcastle College University Centre we will do our utmost to ensure that you always feel supported.

## SUPPORT AVAILABLE TO YOU

**Fika App**

We have partnered with mental fitness app Fika, which is a tool you can use to stay motivated, productive, focused and connected whilst you study with us. You can find out more about the app and how to download here [www.ncl-coll.ac.uk/fika](http://www.ncl-coll.ac.uk/fika)

**Counselling Team**

We provide a safe and private space for students to openly explore issues they may be experiencing. Counselling sessions normally last around 50 minutes and all information that is discussed is treated confidentially in accordance with the British Association of Counsellors and Psychotherapists (BACP).





# KEEPING YOU SAFE



**We strive to be as agile as possible in our teaching to help respond to any changes which may occur. Whilst we aim for 100% face-to-face delivery, there may be times when we have to move to online learning due to circumstances such as a global pandemic.**

As always, the health, safety and wellbeing of all our staff and students is our utmost priority. Should we ever need to change the way we teach our degrees due to government guidance, we will discuss this with you and make sure that you are supported in all aspects of your learning.

TO KEEP UPDATED ON OUR 'KEEPING YOU SAFE' INFORMATION, HEAD TO OUR WEBSITE



## STUDENT PROFILE

**LUCY HALL**  
**STUDENTS' UNION PRESIDENT**

Engaging with the Students' Union as a Student Representative or as an Officer can really boost your confidence. The Students' Union is always looking for new members, so anyone who's interested in joining us is more than welcome.

Being part of the Students' Union is great. There are so many opportunities available that it means you can shape the role to be whatever you want it to be. Whatever your interests, whatever your reasons, feel free to express yourself confidently and make the role your own!





# YOUR STUDENT CITY

**Newcastle is renowned as one of the best student cities in the UK. Whatever you are into, you will find it in Newcastle.**

## SHOPPING

From the famous Northumberland Street to Eldon Square, there are plenty of well-known brands, boutiques and high-end designer shops to keep you occupied. Fancy getting out of the city? One of Europe's largest shopping and leisure complexes, the Metrocentre, is only 10 minutes away by bus or train.

## SPORT

Geordies are famous for their sporting pride, be it their beloved Newcastle United playing at St James' Park, the Newcastle Falcons rugby team at Kingston Park or the city's basketball team, Newcastle Eagles, at the Vertu Motors Arena, only a stone's throw from Rye Hill campus!

## SOCIALISING

Whether you are looking for a café to meet friends or fancy a big night out, you could not choose a better city than Newcastle. Places like Pink Lane Café and Ernest are great locations to take visiting friends to. If a night of sophistication is more your thing, head to the Quayside or Grey Street. If pubs are more your vibe then there are plenty around – The Bridge Tavern and The Forth provide a local atmosphere.

## EATING OUT

There is no shortage of great places to eat in the city centre whatever your taste or budget. Eldon Square, the main shopping centre, has a number of popular chain restaurants including TGI Fridays, Chiquitos and Wagamama. Grey Street is also worth checking out and has a whole host of restaurants serving up a range of cuisines. More into the street food scene? Then be sure to check out Grainger Market, home to a range of independent food stalls offering reasonably priced culinary delights.

## CULTURE

Newcastle-Gateshead is one of the cultural hot spots of the North East. Stroll across the award-winning Millennium Bridge and you will find BALTIC Centre for Contemporary Art which hosts exhibitions from leading contemporary artists as well as those new to the art scene. Across from BALTIC is The Glasshouse – a landmark live music venue. If you are into comedy, head to The Stand on High Bridge Street, billed as 'the best place for comedy'. There's also plenty of museums and art galleries in the city to explore.



FIND OUT MORE ABOUT  
STUDENT LIFE





# STUDENT LIFE ON CAMPUS



**We think it is really important for you to experience all aspects of student life. There are plenty of ways for you to get involved in activities on campus, a chance to make new friends and boost your CV at the same time.**

## STUDENTS' UNION

When you enrol onto a degree course at Newcastle College University Centre, you automatically become a member of Newcastle College University Centre Students' Union, an affiliated member of the National Union of Students (NUS). You can apply for a NUS Totum card entitling you to a number of fantastic discounts in shops, restaurants and services nationwide. The Students' Union has a range of officer roles available to you as a student.

These officers help with the running of the Students' Union (SU) as a fair and exciting organisation and represent you around LGBT+ issues, disabilities, higher education and welfare. Officers are elected into post annually by students so make sure you look out for the elections, maybe you will be the next Students' Union President. Come and visit our dedicated SU Office in the Parsons Building for more information.



## STUDENT WELFARE

Student welfare is an extremely important part of the work of the Students' Union. We are here to help and support you in any way possible and both staff and volunteers are on hand to offer advice. We work with a number of external organisations including New Croft Centre, Newcastle City Council, International Newcastle and NECA to help you access support on sexual health, drugs and alcohol, homelessness, LGBT+ issues and mental health. We also work closely with Newcastle College Central Support Team including specialist higher education learning mentors and counsellors to offer you advice and guidance on any issues you may be experiencing.

## FRESHERS' FAIR

The Freshers' Fair is your introduction to undergraduate life at Newcastle College University Centre. It is also a chance to find out what the Students' Union can offer you, as well as discounts you can take advantage of by being an NUS Totum card holder. There are lots of social activities taking place throughout the week and freebies on offer so it is not one to be missed!

## STUDENT LEADERS

Our Student Leaders Programme gives you the opportunity to undertake research or similar activities within your discipline and across the University Centre. It also means you are able to make a positive impact on the student experience and contribute to the student community, all whilst gaining valuable employability skills and often a generous bursary.

## CLUBS AND SOCIETIES

Clubs and societies are a great way to meet new people and get involved in a range of activities. We encourage students to develop ideas and we may be able to support you in starting your own club or society. We also work closely with other Students' Unions in the local area so that you are able to access some of their facilities.

## HE HUB AND PARSONS 10

Our HE Hub is an ideal place for students to study, socialise or collaborate with friends. Our licensed bar serves hot food, drinks and snacks with a comfy seating area, perfect if you need a change of scenery. Up on the tenth floor of Parsons you will find your own break-out area and computer suite with the latest specialist software. Relax, unwind and take in the stunning views across Newcastle. If you'd like to try somewhere new, the HE learning space on the ground floor of the HE Hub is a great place to study and collaborate with friends too.

## DINE IN STYLE

Be sure to check out The Chefs' Academy, our Highly Commended AA College Rosette restaurant serving a delicious à la carte menu.

## NIGHT AT THE THEATRE

Our Musical Theatre, Acting and Dance degree students regularly showcase their talents in a range of productions on campus. Shows are held in the Peter Sarah Theatre at the Performance Academy.

## WORK OUT, RELAX AND UNWIND

As a degree student you'll have free access to our on-site gym, housing a range of cardio and weights machines, perfect for lunch breaks or after your studies. You can also treat yourself to some relaxation time in The Retreat, our beauty salon, which is located in the Lifestyle Academy. A range of treatments are available including facials, eye and nail treatments, waxing, massage and spa treatments. There is also a hair salon on site.

**DID YOU KNOW  
YOU COULD BECOME  
A STUDENT OFFICER  
TOO?**



## STUDENTS IN PARTNERSHIP



Throughout your course you will be part of a vibrant academic community that values research, scholarship and professional practice. Degree courses at Newcastle College University Centre embrace the concept of Students in Partnership and research-engaged teaching and learning. This means you will be offered opportunities to undertake research or research-like activities within your discipline and across the University Centre. A great way to meet new people, make a positive impact on student life and enhance your CV.

## STUDENT ENGAGEMENT

We actively encourage students to work in partnership with members of staff to enhance the learning experience of all our University Centre students. You will be given the opportunity to take a proactive role in the decision-making process that helps shape the curriculum.

### Student participation is encouraged through:

- cross-University Centre student meetings
- feedback relating to design and co-construction of teaching, learning and assessment
- student representatives and membership of higher education committees and Academic Board
- meetings with the University Centre Senior Management Team
- student representatives on course approval panels
- Student Partnership Engagement Committee (SPEC).

Through a Student Fellowship, you can gain skills and experience beyond the curriculum. Our student fellows can receive up to £1,000 per academic year\* and work on extracurricular enhancement projects in partnership with staff.

## STUDENT PUBLICATIONS

There are a range of opportunities to become part of our publications before you finish your degree and all of our publications are entirely student-led. **Seven Bridges** is an international, peer-reviewed, scholarly journal which gives you the opportunity to publish your research papers in a broad range of subject areas including business, engineering and education. **Folio** showcases our creative disciplines and publishes a selection of work from across our Creative Industries, featuring original artwork from art and design, photography, illustration and more. Finally, and brand new for this year, is **Canny Scran**, which brings you the best of our Culinary Arts students. All of our publications are published annually every summer and each issue is available online and in print.

## STUDENT CONFERENCE

As a student at Newcastle College University Centre you will be able to participate in our annual Higher Education Student Conference. This conference gives you the chance to develop your presentation skills, showcase your research to fellow students, staff and partners and celebrate your achievements at the end of the academic year.

## EXTERNAL CONFERENCES

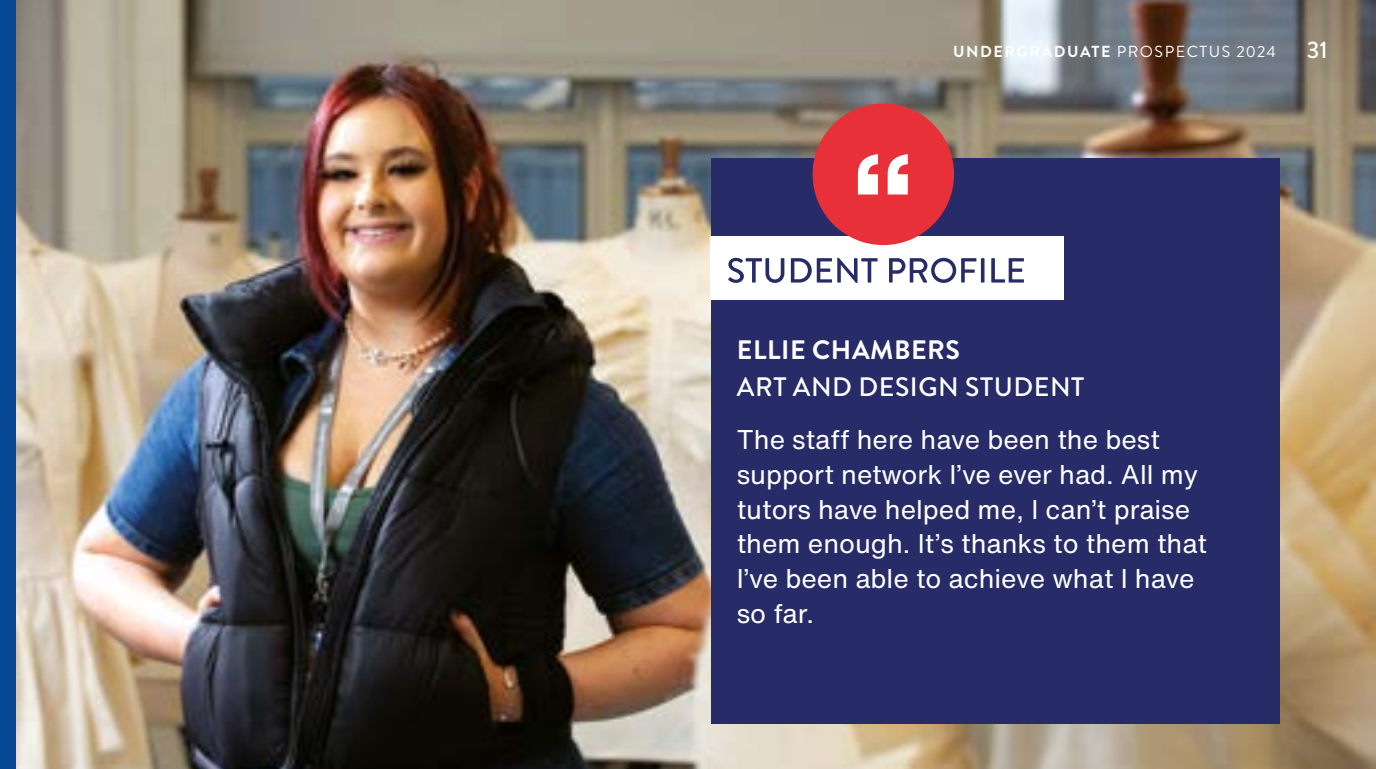
Newcastle College University Centre provides opportunities for students to attend and present their work at external conferences. These include the British Conference for Undergraduate Research and the prestigious Posters in Parliament event. This includes the British Conference for Undergraduate Research, so keep a look out for how you can get involved.

\*depending on level of involvement





# STEPPIN' UP TO A DEGREE WITH NEWCASTLE COLLEGE



“

## STUDENT PROFILE

**ELLIE CHAMBERS**  
ART AND DESIGN STUDENT

The staff here have been the best support network I've ever had. All my tutors have helped me, I can't praise them enough. It's thanks to them that I've been able to achieve what I have so far.

**Many of our students choose to continue their education with us and study at our University Centre once they have completed their Level 3 qualification. Upon completion they choose to progress their studies to undergraduate level to equip them with enhanced skills and knowledge before they pursue their chosen career.**

If you are a current Newcastle College student and successfully meet the published Level 3 entry requirements in an appropriate subject(s), you will be guaranteed a place on a relevant course.

This means you can build on your studies in your chosen area alongside friends and tutors you already know. You will continue to have access to industry-recognised facilities and learn in smaller class sizes, making your experience with us as enjoyable as possible.

**We'd love to see you Step Up with us too.**

If you are currently studying at Newcastle College and wish to apply for a full-time Foundation Degree, Honours Degree (Top-Up) or three-year Honours Degree you can apply to us directly. To find out more and apply visit [www.ncl-coll.ac.uk/steppin-up](http://www.ncl-coll.ac.uk/steppin-up)

KYLE TELLS US WHY HE'S STEPPIN' UP TO A DEGREE AT  
NEWCASTLE COLLEGE UNIVERSITY CENTRE



# STUDENT SUPPORT



**Our support services are here to offer advice and support to students when they need it. We are committed to providing an inclusive educational environment and offer support for students to ensure that the University Centre is a safe and positive learning environment for all.**

## LEARNING SUPPORT

The Special Educational Needs and Disabilities (SEND) Team works with students who have a disability, specific learning difference, mental health difficulty or long-term medical condition. Support may include:

- provision of an Inclusion Plan which advises on reasonable adjustments
- study assistance support on a one-to-one or small group basis
- support with personal care needs and accessibility
- Disabled Students' Allowances (DSA) advice and guidance
- Alternative Assessment Plans
- exam access arrangements
- support from our Life Skills Hub
- arranging screening and assessments for Specific Learning Differences.

## STUDENT SERVICES

Our Student Services Team provide impartial information, advice and guidance on course, finance and welfare issues such as:

- advice on progression routes
- accommodation options
- individual course and finance advice appointments
- finance and money management advice
- learner support fund assessments, including hardship
- signposting to careers information, advice and guidance
- DBS and Right to Work checks.

## ACADEMIC SUPPORT COACHES

We have a highly skilled team of Academic Support Coaches who are there to support you with all your academic needs. You can pop in to see them or book a one-to-one meeting. They can support you with skills such as:

- academic writing skills
- proofreading
- referencing
- critical thinking
- presentation skills.

## LEARNING MENTORS

Learning Mentors can work with you on a wide range of issues including health, wellbeing and signposting to external services and support, including:

- study skills
- mental health issues
- organisation and time management
- personal issues.

We also provide support for care-experienced students, young adult carers, student parents and pregnant students.

## ASSISTIVE TECHNOLOGY TEAM

The Assistive Technology Team support students who have a disability with:

- laptops/dictaphones/loop systems, etc.
- transcription services (braille/alternative formats)
- assistive technology training
- specialist software.

## LIBRARIES TEAM

The Libraries Team offer group workshops and one-to-one academic support on a drop in basis. Topics available include:

- plagiarism and copyright
- essay writing and structuring dissertations
- Harvard referencing
- literature review, research methods and research skills
- revision and exam preparation.

## CAREERS AND EMPLOYABILITY SUPPORT

The HE Careers and Employability Team support students by increasing their confidence and knowledge around their own individual employability and career management skills, whether this is working for an organisation or setting up their own business.

The team can help with:

- developing career plans
- one-to-one support and workshops about career management and employability skills
- how to search for jobs
- CV, cover letter and personal statement guidance
- interview skills.

You will be able to access support and guidance from the HE Careers and Employability Team for one year after graduation too.

**Please contact our Central Support Service (CSS) for more information on the support available:**

[css@ncl-coll.ac.uk](mailto:css@ncl-coll.ac.uk)

[www.ncl-coll.ac.uk/support/university-centre-support](http://www.ncl-coll.ac.uk/support/university-centre-support)





# OPEN EVENTS

**Open Events are held throughout the academic year and are a great opportunity for you to see our multi-million pound campus for yourself and get a feel for what it is like to study a degree at the University Centre. It is also your chance to speak to course tutors about the courses you are interested in studying to get answers to those all-important questions.**

We hold Open Events throughout the year which means you can come and visit us to see what life on campus is like.

Our Open Events are a great opportunity for you to chat to tutors, find out more about our course and take a tour of the fantastic facilities. If you've got a question, want to take a tour or chat to some of our current students to see what studying at the University Centre is all about, come along to an Open Event.

Head to [www.ncl-coll.ac.uk/events](http://www.ncl-coll.ac.uk/events) to find out more and book your place.

**If you are unable to attend an Open Event do not worry, you can still visit us anytime. To arrange a tour of the campus email [visit@ncl-coll.ac.uk](mailto:visit@ncl-coll.ac.uk)**

TAKE A LOOK AT WHAT HAPPENS AT AN ON-CAMPUS OPEN EVENT



# YOUR JOURNEY TO STUDYING WITH US

1

**MARCH – SEPTEMBER 2023**

View our degree courses on our website or via the Course Finder at [ucas.com](http://ucas.com). You can also visit one of our monthly Open Events or you can contact us directly if you have any queries by emailing [undergraduate@ncl-coll.ac.uk](mailto:undergraduate@ncl-coll.ac.uk)

2

**SEPTEMBER 2023**

UCAS begins to accept applications for undergraduate courses starting in September 2024. We also begin to accept applications from our current students directly.

3

**31 JANUARY 2024**

The deadline for applications made through UCAS is 31 January 2024. However, you can apply directly to us after this date. Visit our website after this date for further information.

4

**JANUARY – MARCH 2024**

If you've applied for a course before the UCAS January deadline, you will receive a response from us before the end of March. Some of our degree courses require you to attend an interview or an audition or produce a portfolio before an offer is made.

5

**MARCH 2024**

Begin to apply for your student finance. Further information can be found at [gov.uk/studentfinance](http://gov.uk/studentfinance)

6

**MARCH – JULY 2024**

When you accept your offer you will be sent more information about your studies with us. We will tell you everything you need to know about starting your course.

7

**JULY – AUGUST 2024**

If we have made you a conditional offer based on you achieving a certain level of grades, and you meet these requirements, we will confirm your place.

8

**SEPTEMBER 2024**

Your exciting journey with Newcastle College University Centre begins!

# GET WORK READY



**At Newcastle College University Centre we are committed to ensuring you are ready for the workplace by the time you graduate from your course. As part of our work experience opportunities you will benefit from:**

- exciting work placement opportunities to gain valuable professional experience.
- guest lectures from employers with industry insight.
- opportunities to undertake additional qualifications alongside your degree course.
- the chance to gain membership of professional bodies and/or associations.
- industry-experienced tutors who know what it takes to succeed.
- advice on CV building, interview tips and building a professional social media presence.
- networking events to meet prospective employers.
- accreditation from professional bodies.
- collaborative projects with students from other degree courses to get the most out of your learning experience.
- local, national and international field trips to enrich your studies.
- opportunities to exhibit at industry-relevant exhibitions to showcase your work.

# TUITION FEES AND FINANCIAL SUPPORT

## TUITION FEES

Our tuition fee for full-time undergraduate UK and EU students studying a degree starting in 2024\* will be £9,250 per year. There may be additional costs associated with your course such as field trips, equipment and printing. You can find out what's included in your Tuition Fee on our website and further information will be outlined by your tutor. You can choose to pay your tuition fees upfront or take out a Tuition Fee Loan from the Student Loans Company, which currently defers payment until you earn over £25,000 per year after you graduate. You can apply for student finance by registering your details at [www.gov.uk/student-finance](http://www.gov.uk/student-finance) or alternatively you can apply for student finance on your UCAS application form.

## GOVERNMENT MAINTENANCE LOAN

A Government Maintenance Loan is available to help with your living costs. The amount you can borrow depends on where you live, study and your household income. The maximum Government Maintenance Loan that will be available if you live at home will be up to £8,400 and £9,978 if you are living away from home.\*\*

## NEWCASTLE COLLEGE CASH BURSARY

A cash bursary of £1,000 will be offered to new full-time undergraduate home students paying full fees and who meet certain criteria. Eligibility to receive the bursary will be determined by their entitlement to elements of the Student Loan Company's finance packages (i.e. full Maintenance Loan) and will be revisited using this criteria annually.

The bursary is available for each year of the degree course and will help those students most in need with the costs associated with studying a degree, whether it's for accommodation, course materials or anything else that helps them with their studies.

Travel bursaries are also available for the first year of study for students living two miles or more away from college and is subject to you achieving 90% attendance.

## HIGHER EDUCATION HARDSHIP FUND

The Higher Education Hardship Fund may be available to full-time and part-time students who are experiencing financial disadvantages. We will assess student need for financial assistance before determining whether to award financial support. The funding allocated from the Higher Education Hardship Fund is a discretionary award and is conditional on a minimum attendance of 90%.

## ENGAGEMENT BURSARY

The Engagement Bursary supports our students' engagement with their studies. All students at Level 4 and Level 5 with a minimum of 90% attendance can apply to receive a monthly cash bursary to support travel or purchase resources to study at the University Centre.

*\*You should expect to pay tuition fees for every year in attendance and be aware these fees may increase annually. On the basis of current Government guidance any increase is unlikely to exceed the increase in inflation by reference to the Retail Price Index (RPI). \*\*Please check [www.gov.uk/student-finance](http://www.gov.uk/student-finance) for most up-to-date information on student loans.*



# A DEGREE THAT FITS AROUND YOU



## PART-TIME STUDY

**We offer a range of study modes which means you can study in a flexible way that fits around your current commitments. So whether you are looking to upskill in your current role, or retrain to pursue a new career, you can study in a way that best suits your needs.**

### EVENING STUDY

This mode of study is ideal for those who may be working full-time but would like to study a degree in the evening. Classes are typically three hours in duration and twice a week.

### MODULE STUDY

We understand you may not be able to commit to studying a full Foundation or Honours Degree, but you may wish to study certain modules of a programme. This mode of study allows you to select the modules that are most relevant to your continuous professional development (CPD).

### DAY-RELEASE

This enables those who are in full-time employment to study a degree one day a week.

### COMPETITIVE TUITION FEES

Our tuition fee for a part-time undergraduate degree starting in 2024\* is £4,625 per year. If you are studying your first degree you are likely to qualify for a Tuition Fee Loan to help cover the cost. This loan is not based on household income and there's no upper age limit for applying. To check your eligibility visit [www.gov.uk/studentfinance](https://www.gov.uk/studentfinance)

### HOW TO APPLY

Applications for part-time degrees are made through our website and **not UCAS**. You will be asked to include a personal statement, details of previous employment history and give details of a referee. Once you have applied, you will be contacted by a course team member to discuss your interest further.

**For more information on our courses and to apply go to:**  
[www.ncl-coll.ac.uk/part-time-degrees](https://www.ncl-coll.ac.uk/part-time-degrees)

*\*You should expect to pay tuition fees for every year in attendance and be aware these fees may increase annually. On the basis of current Government guidance any increase is unlikely to exceed the increase in inflation by reference to the Retail Price Index (RPI).*

# USE YOUR EXPERIENCE



**Recognise Me is a unique online service that considers your previous work experience and skills and analyses whether you may be exempt from studying certain modules of your degree, saving you valuable study time.**

**The service allows us to assess whether your experience in your job, previous qualifications or training can be translated into module credits (the elements that make up a degree course).**

## RECOGNITION OF PRIOR LEARNING (RPL)

The process of linking your previous skills and experience to university credit is referred to as Recognition of Prior Learning (RPL) and gives you the opportunity to gain recognition of your achievements outside of the classroom. If you would like to make an RPL claim, your tutor will inform you of the process.

10,000 GRADS  
in  
10 YEARS



### ALUMNI PROFILE

**ALEX KING**  
FdA AERONAUTICAL ENGINEERING

What makes Newcastle College University Centre more competitive is that they also provide technical teaching by simulating hangar or workshop experience, so whenever you enter industry you're not overwhelmed. You've already got all the skills needed to communicate using technical language all your professional peers will understand.







# EDUCATION AND TEACHER TRAINING

**Newcastle College University Centre has an excellent reputation for teacher training. We offer both full-time and part-time courses that fully meet the requirements for Initial Teacher Training for the education of people aged 14 years and over and lead to achievement of Qualified Teacher Learning and Skills (QTLS).**

## TEACHER TRAINING

Our Diploma of Higher Education and PGCE programmes are mapped to national standards and lead to Qualified Teacher Learning and Skills (QTLS). Candidates with QTLS have parity of esteem with holders of secondary QTS and can be employed in schools.

## DIPLOMA OF HIGHER EDUCATION: EDUCATION AND TRAINING

This course is aimed at those wishing to pursue a career in teaching, offering you the opportunity to work towards a professional teaching qualification. You will increase your knowledge of various teaching approaches and techniques as well as developing the skills and confidence you need to become a competent and reflective teacher in further education. This programme involves a minimum of 100 hours of teaching practice and can be studied part-time over two years.

**Choose from two routes:**

- working in the Education and Training Sector OR
- working with learners with Special Education Needs.

## POSTGRADUATE CERTIFICATE IN EDUCATION (PGCE)

Our PGCE programmes are aimed at graduates who are either currently in or seeking to pursue a career in the post-compulsory education sector. These programmes have been informed by the most recent developments in educational research and government policy and will help you to develop the skills you need to become an effective teacher and developing postgraduate-level research skills. These programmes involve a minimum 100 hours of teaching practice and can be studied full-time (one-year) or part-time (two years).

## CONTINUOUS PROFESSIONAL DEVELOPMENT (CPD)

We offer two degree courses aimed at those who are already working within the education sector and wish to broaden their professional knowledge.

## BA (HONS) EDUCATION AND PROFESSIONAL DEVELOPMENT (TOP-UP)

This course offers a progression route from our Foundation Degree programmes and other Level 5 post-compulsory teaching qualifications. It is aimed at teaching professionals and managers working in the education sector. The course has a wide variety of modules which provide opportunities to research specialist areas across a range of educational contexts. It allows education professionals to develop in-depth knowledge and a critical understanding of educational research and policy, to apply principled approaches to researching professional environments and to advance their professional practice. This programme is studied on a part-time basis over two years.

## MEd EDUCATION AND PROFESSIONAL DEVELOPMENT

This postgraduate programme aims to equip educational professionals with the skills to conduct independent research relating to a particular area of study or interest in their working environment or the wider education sector. Undertaking this programme has enhanced the career paths of past students. Core modules develop students' criticality and research skills whilst elective modules allow opportunities to investigate specialist areas. The course is aimed at teachers, teacher trainers, managers, administrative and service personnel. This programme is studied on a part-time basis over two years.

## STUDENT FINANCE

All of our higher education teaching programmes are eligible for funding from the Student Loans Company, even if you have already had a loan to support previous study. You may also be able to access subject specialist bursaries from the Department for Education to support your study.

## PLACEMENTS

Our Foundation Degrees and PGCE programmes involve a minimum of 100 hours of teaching practice over the duration of the course. These placements provide invaluable practical experience whilst you study. Our students secure teaching placements in colleges, schools and sixth forms, higher education institutions and universities, voluntary and community learning, professional education and training, prison and probation services and independent training providers.





## PROFESSIONAL DEVELOPMENT SUPPORT

We have a dedicated member of our team who liaises with students and employers to help secure teaching placements. Students are guided and encouraged throughout the course by tutors and mentors. We hold regular Teacher Recruitment Events to support our graduate teachers into employment and to secure placements for students due to start teaching programmes. We have strong links with employers and these events are well attended by local employers. We also invite all of our students to Professional Development Events throughout their course giving them the opportunity to widen their knowledge of the sector, take part in workshops and gain sector insight through guest speakers.

## PROGRESSION

Our students often secure paid teaching hours whilst studying their course. Our graduates have gone on to successfully secure employment at schools and sixth forms, colleges and higher education.

## HOW TO APPLY

All full-time and part-time applications need to be made online on our website and **not through UCAS**. All applicants will be invited to attend an interview to complete group tasks and individual writing tasks. We spend time with all of our applicants to ensure you join the course that is most suited to your educational background and career goals.

### Apply online:

[www.ncl-coll.ac.uk/nse](http://www.ncl-coll.ac.uk/nse)

### Contact us:

If you would like to find out more information about our courses please contact our team:

**0191 200 4565**

[nse@ncl-coll.ac.uk](mailto:nse@ncl-coll.ac.uk)

[www.ncl-coll.ac.uk/nse](http://www.ncl-coll.ac.uk/nse)

# POSTGRADUATE STUDIES

**At Newcastle College University Centre we do not just offer undergraduate degrees, Certificates in Higher Education and Degree Apprenticeships. We offer flexible, affordable and career-enhancing postgraduate degrees too.**

Whether you have studied with us before or are joining us for this next step in your life, you will have access to student support, our strong industry links and our commitment to an education that makes you work-ready.

We offer postgraduate courses in Art and Design, Business, Childcare, Computing, Education and Health and Social Care. You will receive high-quality practical education in a dedicated higher education college setting. So if you have thought about advancing your undergraduate degree and want to build your industry-ready skills, a postgraduate degree with Newcastle College University Centre is for you.



## STUDENT PROFILE

### JOANNA ILORI MBA STUDENT

Anybody who decides to come to Newcastle College University Centre is going to love it. You will love making friends, the buildings and the lecturers.

As an international student, it is a home away from home. It is such a great place to come and study.

FIND OUT MORE ABOUT  
OUR POSTGRADUATE  
DEGREES AT  
[WWW.NCL-COLL.AC.UK/  
POSTGRADUATE](http://WWW.NCL-COLL.AC.UK/POSTGRADUATE)





# INTERNATIONAL

**At Newcastle College University Centre we are delighted to welcome international students to study with us.**

When you study with us you will be welcomed by our dedicated International Team who is committed to offering you a personalised student experience in a friendly and supportive environment.

We pride ourselves on the support we provide for our international community. Our team will help you to adjust to life away from home and will provide welfare advice and guidance throughout your studies.

Our International Office services include:

- application advice including issuing Confirmation of Acceptance for Studies (CAS)
- pre-departure information
- accommodation advice
- visa application advice
- welcome and induction
- social activities
- information on living in Newcastle
- help with registering with a local doctor
- support with opening a bank account
- information on council tax.

If you are an international student you do not need to apply through UCAS. Please contact our International Team.

[international@ncl-coll.ac.uk](mailto:international@ncl-coll.ac.uk)  
 (+44) 191 226 6323

FIND OUT MORE ABOUT  
 INTERNATIONAL SUPPORT  
 AT NEWCASTLE COLLEGE  
 UNIVERSITY CENTRE



## STUDENT PROFILE

**DECLAN KATER**  
 ART AND DESIGN STUDENT

As an international student studying abroad, you just learn a lot more about life - about what life means to you personally and it can only benefit the way you look at the world for the next chapter of your life. I will never regret taking the opportunity to study at Newcastle College University Centre.







  
 10,000 GRADS  
*in*  
**10 YEARS**

## CELEBRATING 10,000 GRADUATES IN 10 YEARS

At Newcastle College University Centre we have reached a very exciting milestone. This year, we have celebrated helping 10,000 degree students to graduate over the past 10 years. It is a great achievement and one that we're very proud of.

We take great pride in giving our students the skills and knowledge they need for a successful career in industry. You can join our community too.

FIND OUT WHAT HAPPENS AT OUR GRADUATIONS





# HOW TO APPLY

If you are not currently a student at Newcastle College and wish to apply for a full-time CertHE, Foundation Degree, Honours Degree or Honours Degree (Top-Up) with us you will need to make an online application at [ucas.com](https://ucas.com)

## UCAS APPLICATIONS

The advantages of online UCAS applications are:

- support and advice is available from [www.ucas.com](https://www.ucas.com)
- it can be used by students in schools and colleges and those applying independently
- online applications are processed within 24 hours then sent to us.

## HELP WITH YOUR APPLICATION

If you are at school or college, members of our Student Services Team may be able to help you with the online application process.

Alternatively, you can contact UCAS directly:

0371 468 0468  
[enquiries@ucas.ac.uk](mailto:enquiries@ucas.ac.uk)

When you apply, you will need the UCAS code for your chosen course e.g. N200 (this is detailed on each course overview within this prospectus). You can also find this information at [www.ucas.com](https://www.ucas.com)

You will also need Newcastle College University Centre's institution name and code.

THE INSTITUTION NAME IS:  
**NCAST**  
THE INSTITUTION CODE IS: **N23**

## NEWCASTLE COLLEGE STUDENTS

If you are currently studying with us and wish to apply for a full-time Foundation Degree, Honours Degree or Honours Degree (Top-Up), you can apply to us directly. All you need to do is complete a short form on our website and a member of the team will be in touch to discuss your application and the next steps. Your tutor can also help you apply.

## PART-TIME APPLICANTS

If you would like to study one of our degree courses on a part-time basis you can also apply directly to us. Simply go to:

[www.ncl-coll.ac.uk/part-time-degrees](https://www.ncl-coll.ac.uk/part-time-degrees)

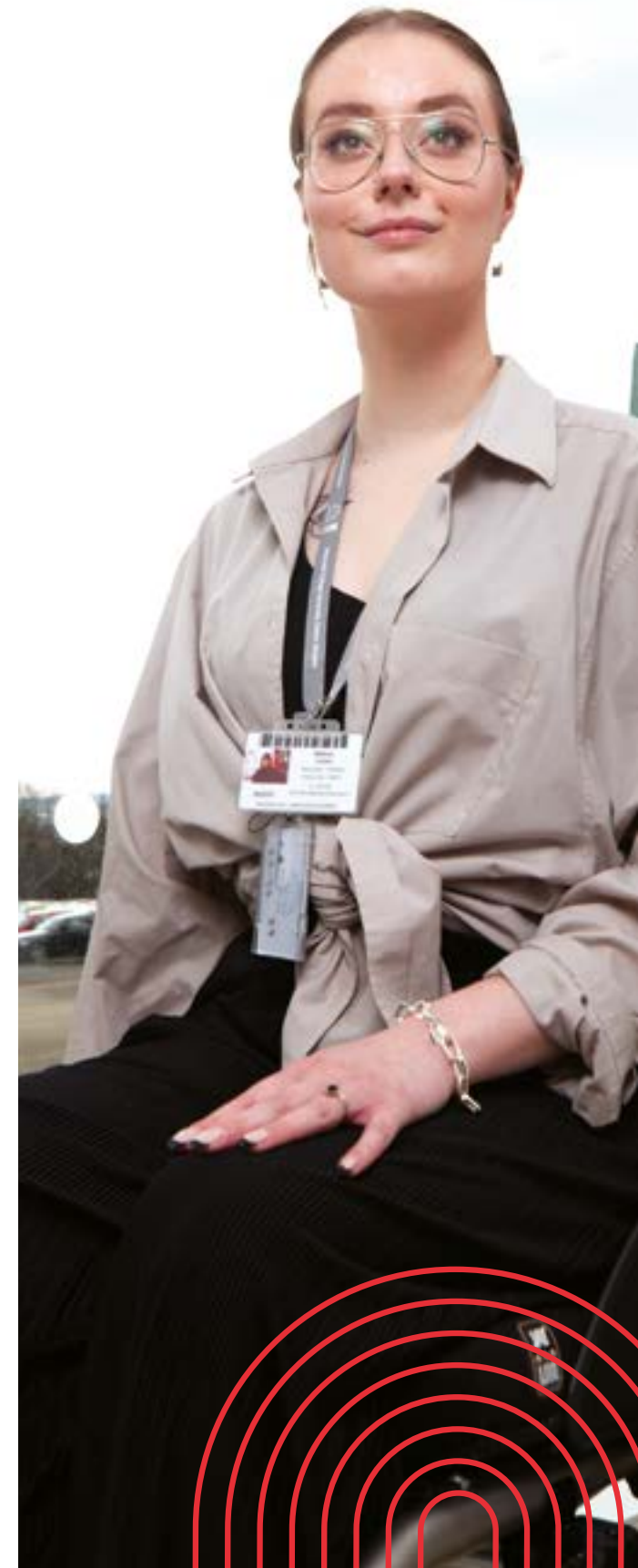
## INTERNATIONAL STUDENTS

International students can apply directly to our International Office. You will need to complete an International Application Form and submit copies of your passport, previous visas, academic documents and evidence of English language proficiency. Our International Team will support you through this process, please contact [international@ncl-coll.ac.uk](mailto:international@ncl-coll.ac.uk)

## NEED ASSISTANCE?

If you require more information on our degree courses, need help with making your application or require this guide in an alternative format then please contact us:

0191 200 4000  
[enquiries@ncl-coll.ac.uk](mailto:enquiries@ncl-coll.ac.uk)



# AESTHETICS AND MAKE-UP

**The aesthetics and make-up industry makes millions each year and is growing rapidly to meet the demands of evolving trends and emerging techniques. As an Aesthetics and Make-Up student you will know how important it is to have the right skills for industry and our degrees at Newcastle College University Centre are designed to help you stand out from the crowd.**

By studying with us, you will be joining a unique and highly-skilled group of undergraduates ready to take the aesthetics and make-up industry to the next level.

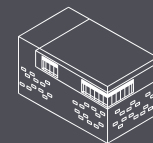
Our degrees have been designed to provide you with higher-level and specialised skills that are needed within the advanced aesthetic and make-up industry.

## STUDY WITH US AND YOU WILL:

- benefit from specialist industry training from leading providers.
- have access to specialist equipment to develop your technical skills.
- be taught by industry-experienced tutors who have specialised in clinic management, spa management and aesthetic practice.
- attend industry exhibitions to enrich your learning.
- be assessed in a variety of ways including case studies, presentations, reports and practicals.

## JOBS DIRECTLY RELATED TO AESTHETICS AND MAKE-UP QUALIFICATIONS INCLUDE:

SPA MANAGER  
 SALON OWNER  
 AESTHETICIAN  
 CLINIC MANAGER  
 BUSINESS OWNER  
 FREELANCE ARTIST  
 TV, MOVIE AND THEATRE HAIR AND MAKE-UP  
 ADVANCED MAKE-UP  
 SEMI-PERMANENT MAKE-UP  
 MEDICAL MICROPIGMENTATION  
 PROFESSIONAL



AESTHETICS AND MAKE-UP STUDENTS STUDY IN OUR LIFESTYLE ACADEMY.

## INDUSTRY SUPPORTERS:

 DERMAQUEST

discover better **sk:n**



## F&A AESTHETIC PRINCIPLES AND CLINICAL PRACTICE

DURATION: 2 YEARS

ENTRY REQUIREMENTS: LEVEL 3 BEAUTY THERAPY QUALIFICATION ALONGSIDE FACIAL AND BODY ELECTROTHERAPY  
UCAS CODE: BN32

Are you looking to enhance your practice within the non-medical aesthetic sector as a practising aesthetician? This degree has been developed with employers including SK:N, Laser Clinics UK, Myobody Aesthetics and Transform to ensure it reflects what skills are required to be employed within the non-medical aesthetics industry. You will study the theory behind aesthetic procedures and gain an understanding of why they are carried out in the way that they are to shape your clinical practice. You will cover topics such as laser and pulsed light for hair removal and skin rejuvenation, microneedling for collagen synthesis, scarring and pigmentation and superficial chemical peels for a range of skin concerns.

## F&A ADVANCED TECHNIQUES IN MEDIA AND SEMI-PERMANENT MAKE-UP

DURATION: 2 YEARS

ENTRY REQUIREMENTS: 32-64 UCAS POINTS  
UCAS CODE: BN34

This Foundation Degree in Advanced Techniques in Media and Semi-Permanent Make-Up degree is an ideal course for those with a passion for media and theatrical make-up and who are seeking to gain advanced semi-permanent make-up skills. This course will provide you with knowledge and skills to effectively manage the quality of services offered in the industry, the advanced capabilities of providing a range of progressive treatments and expertise in the field of advanced make-up. You will work with high-quality, specialised equipment and learn highly-advanced skills which will enhance your career prospects in the make-up industry. During this degree you will also work with industry-renowned brands to develop a unique skill set in cosmetic, theatrical and reconstructive make-up.

## BA (HONS) ADVANCED PRINCIPLES IN MEDIA MAKE-UP (TOP-UP)

DURATION: 1 YEAR

ENTRY REQUIREMENTS: FOUNDATION DEGREE OR EQUIVALENT IN RELATED AREA  
UCAS CODE: BN35

Whether your dream is to work in media and theatrical make-up or you're interested in introducing technology into your prosthetic work, this is the course for you. You will build expertise in making bespoke wigs from scratch, a skill which is highly sought-after within the film and theatre industry. Within the advanced prosthetics module you will focus on advanced sculpting skills as well as creation of full-face prosthetics, a lucrative and increasingly sought-after-skill. 3D sculpting and character design will focus on exploring various attributes that are necessary to create a believable character and translate visual research into a 3D character using organic modelling techniques with a digital sculpting tool. This will equip you with the necessary skills to begin your journey within the media sector.

## BA (HONS) ADVANCED SKIN TECHNIQUES (TOP-UP)

DURATION: 1 YEAR

ENTRY REQUIREMENTS: FOUNDATION DEGREE IN A RELEVANT AREA WITH PREVIOUS EXPERIENCE OF CHEMICAL PEELS, LASER AND PULSED LIGHT THEORIES, PHYSIOLOGY OF THE SKIN AND RESEARCH METHODS  
UCAS CODE: BN33

Are you currently working within the non-medical aesthetic industry and looking to further your practice? This is an exciting programme that has been developed to expand from the Foundation Degree in Aesthetic Principles and Clinical Practice, enhancing theoretical and vocational skills within the industry. Throughout this programme you will learn advanced procedures such as medium strength chemical peels, mixed modalities and advanced laser procedures such as tattoo removal, with theoretical principles to support. The intent of the programme is to expand on the underpinning knowledge of an aesthetician to ensure that you are competent to treat a wider range of complex conditions.

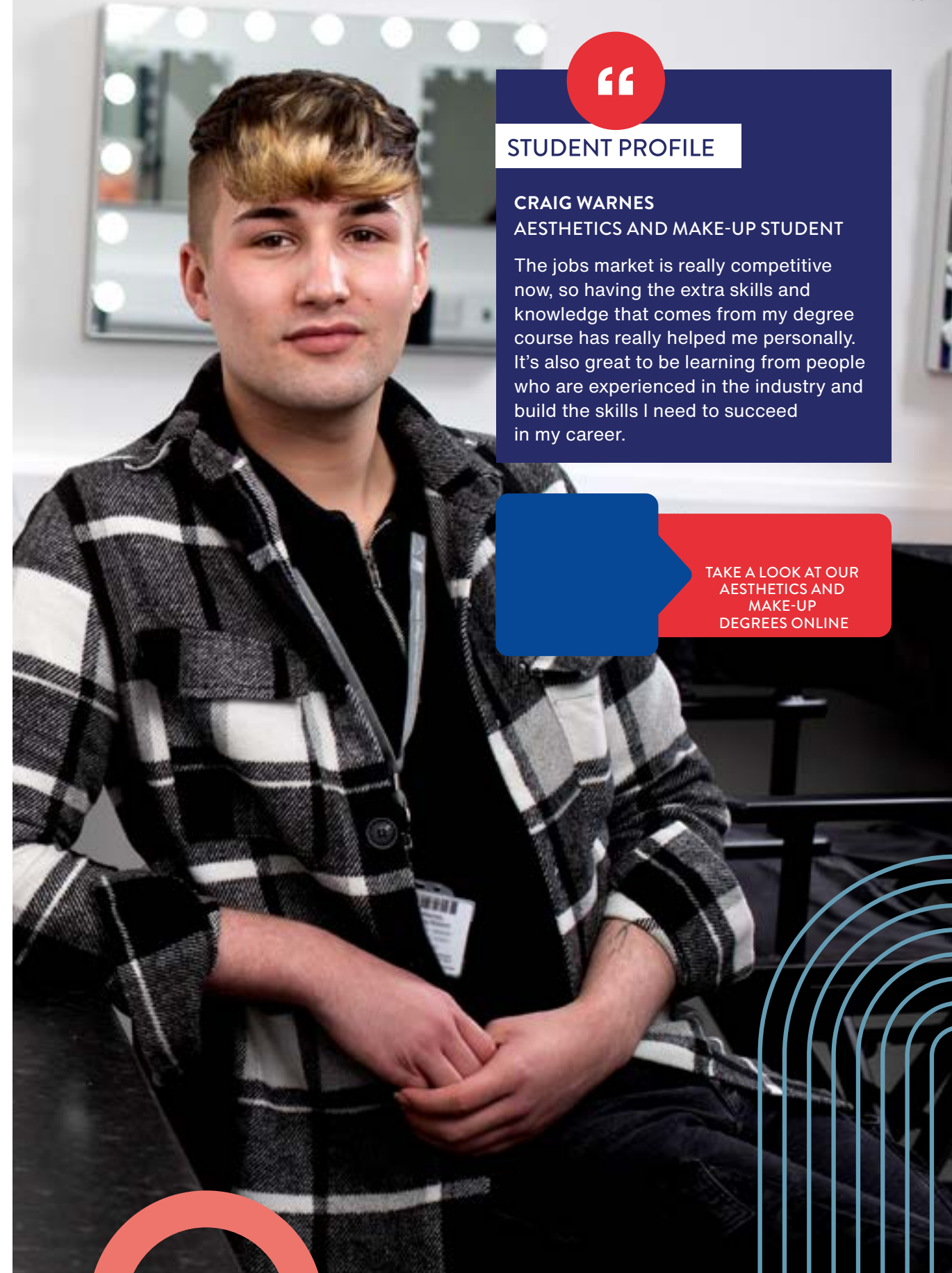


## STUDENT PROFILE

### CRAIG WARNES AESTHETICS AND MAKE-UP STUDENT

The jobs market is really competitive now, so having the extra skills and knowledge that comes from my degree course has really helped me personally. It's also great to be learning from people who are experienced in the industry and build the skills I need to succeed in my career.

TAKE A LOOK AT OUR  
AESTHETICS AND  
MAKE-UP  
DEGREES ONLINE





# ART AND DESIGN

**As a creative, you will know how important it is to study in an environment which will challenge and support you to thrive.**

With our Art and Design degrees you will be provided with a creative community offering you a safe space to explore ideas, develop your craft and collaborate with industry leaders.

Depending on your degree, you will have access to industry-standard equipment such as a digital fabric printer, laser cutter, 3D Printer, screen printing facilities, CNC router and knitting machines. You will also become a proficient user of the Adobe Suite, specialising in InDesign, Photoshop and Illustrator.

Our creative degrees will set you up for a rewarding career in the industry you love. Our industry partners that continue to work with, and support, our students to succeed include Jack Nockles from AND+ Studios, Louise Weeks from Trend Bible, renowned Fashion Stylist Jo Shippen and famed Surface Designer Charlotte Gaisford. If you are a forward-thinker who wants to find your voice as an artist or designer, you belong with us.

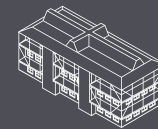
## STUDY WITH US AND YOU WILL:

- have the opportunity to undertake exciting work placements with regional, national and international organisations.
- be taught in smaller class sizes by industry-experienced tutors who know what it takes to succeed.
- work on live briefs set by employers and benefit from industry insight from guest speaker lectures.
- have the chance to go on national and international field trips to enrich your studies.
- exhibit your work at end of year shows.



## JOBS DIRECTLY RELATED TO ART AND DESIGN QUALIFICATIONS INCLUDE:

FASHION DESIGNER  
**FASHION RETAIL**  
 BUYER  
**MERCHANDISER AND STYLIST**  
 ART CURATOR  
**TEXTILE AND SURFACE DESIGNER**  
 VISUAL MERCHANDISER  
**ART MANAGEMENT**  
 INTERIOR DESIGNER  
**ARTIST**  
 DESIGNER/MAKER  
**PRODUCT DESIGNER**  
 MULTI-DISCIPLINED DESIGNER



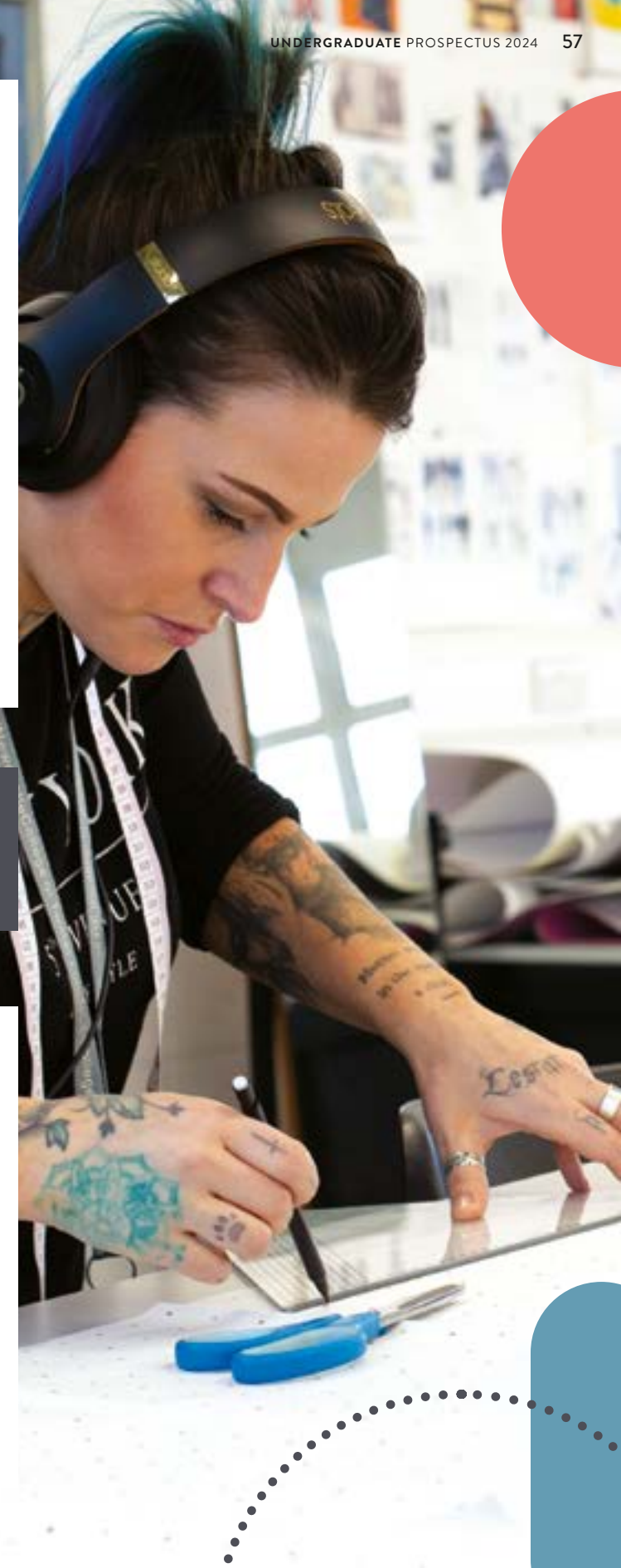
ART AND DESIGN STUDENTS STUDY IN OUR MANDELA BUILDING (SCHOOL OF ART AND DESIGN).

## INDUSTRY SUPPORTERS:

**TrendBible**

**JO SHIPPEN**

**AND+ STUDIOS LTD**





## FdA FASHION MARKETING AND COMMUNICATION\*

DURATION: 2 YEARS  
ENTRY REQUIREMENTS: 64 UCAS POINTS  
UCAS CODE: W234

If you are looking for a career in the fast-paced fashion world, this Fashion Marketing and Communication degree is for you. This degree will prepare you for a career in the fields of fashion retail, PR and brand marketing, buying, styling and creative direction. Working extensively with industry, you will learn skills in visual merchandising, branding and corporate image, range planning and distribution, and work on live briefs from local and national specialists in the sector such as Darkus Magazine, Sally Angnard and Second Skin. This uniquely designed course is ideal if you are interested in any of these areas of fashion, or if you are already working within the industry.

*\*subject to validation*

## FdA INTERIOR AND SPATIAL DESIGN

DURATION: 2 YEARS  
ENTRY REQUIREMENTS: 64 UCAS POINTS  
UCAS CODE: W250

Are you interested in a career in the design industry? Would you like to create your own designs? This Interior and Spatial Design degree will give you industry-aligned design skills and knowledge that respond to the changing shape of design. The course is unique in that you will learn a range of vocationally-focused design principles and practical skills. You will become proficient with equipment such as a laser cutter and digital applications like Sketchup and the Adobe Suite as well as having the opportunity to develop your own commercial and residential schemes.

## FdA SURFACE DESIGN PRACTITIONER

DURATION: 2 YEARS  
ENTRY REQUIREMENTS: 64 UCAS POINTS  
UCAS CODE: W231

Are you looking for a specialist course focusing on design for printed and constructed textiles? Throughout this degree, you will develop your own creativity and learn about the history, culture and sustainability of the industry. This Foundation Degree will allow you to find and express your personal philosophy of textiles and surface design and develop your own signature style. You will build your skills in areas such as drawing and painting, CAD surface design, hand and machine embroidery and fabric manipulation. Learning from industry-experienced tutors, you will get the opportunity to work with local and national companies such as Moonpig, Ostroy and Vamos using a range of traditional and contemporary techniques.

## FdA FASHION DESIGN AND INNOVATIVE TECHNOLOGIES

DURATION: 2 YEARS  
ENTRY REQUIREMENTS: 64 UCAS POINTS  
UCAS CODE: W235

During this degree you will develop an advanced knowledge of the fashion industry and, working with expert tutors, you will develop your own signature style and the essential skills to stand out to employers. You will become experienced using industry-standard tools like CAD which is used for design, pattern cutting, garment construction and product development. You will also gain practical experience in research, illustration, developing creative ideas, selecting fabrics and planning shop reports. This degree is hands-on and you will have a chance to undertake work experience as well as take part in national and international trips to places like Paris, New York and London.

## BA (HONS) FINE ART

DURATION: 3 YEARS  
ENTRY REQUIREMENTS: 64 UCAS POINTS  
UCAS CODE: W100

If you have a passion for fine art or art and design, this degree will allow you to explore your interests and build the skills you need for a successful career in the industry. Through practical studio sessions, you will become proficient in metal, ceramic, traditional and digital print, lensbased and sewing room skills. You will learn traditional and contemporary practices, such as drawing, painting, sculpture, installation and digital practice. As this art degree focuses on showcasing the work you create, you will be given the opportunity to exhibit throughout your time as a student and work with industry to develop external exhibition experience.

## BA (HONS) INTERIOR AND SPATIAL DESIGN (TOP-UP)

DURATION: 1 YEAR  
ENTRY REQUIREMENTS: FOUNDATION DEGREE OR EQUIVALENT IN A RELATED AREA  
UCAS CODE: W252

This degree will enable you to develop your management and project development skills, preparing you for life in industry. Learning from industry-experienced tutors, you will research and design your own project brief that responds to the needs of the sector and the changing shape of the interior, architectural and design industries. This design degree will give you the additional skills and knowledge you need to get you ready for a career in industry. Developed alongside employers, this degree will enable you to work on live briefs, giving you experience of industry demands and hands-on experience of the art and design sector.

## BA (HONS) DESIGN PRACTICE (TOP-UP)

DURATION: 1 YEAR  
ENTRY REQUIREMENTS: FOUNDATION DEGREE OR EQUIVALENT IN A RELATED AREA  
UCAS CODE: W212

If you're looking for a degree where you can design your own future, this is the course for you. During the BA (Hons) Design Practice (Top-Up) degree programme you will develop your own unique professional practice, pursuing an individual pathway into the industry. Learning from industry-experienced tutors, you will research and design your own project brief, linking closely to career aspirations and the needs of the industry. You will have the opportunity to undertake work experience with businesses such as O, Mario Minchella Architects and Master Debonair. You will have access to specialist industry equipment throughout your design degree, including an industrial sewing room, digital and traditional print room, 3D workshops and Adobe Suite programmes.

“

### STAFF PROFILE

#### DAN CIVICO LECTURER

I've worked here for almost 20 years so there have been many proud moments such as designing the HE Hub (a dedicated higher education space) with my students, to working with amazing industry professionals on live projects. Every year the biggest highlight is seeing my students graduate with outstanding portfolios of work and setting off on their careers.

TAKE A LOOK AT OUR  
ART AND DESIGN  
DEGREES ONLINE

# AVIATION

**The world of aviation is constantly evolving and demand for highly-skilled graduates is increasing. If you are looking for a fulfilling career in aircraft maintenance engineering, we have a degree for you.**

As an Aviation student you will benefit from studying at our specialist Aviation Academy. Based at Newcastle International Airport, you will have access to a wide range of industry-standard training aircraft and resources. Our aircraft include a fully functional Beechcraft Premier 1 business jet, a BAE Jetstream 3100 turbo-prop, a Piper Aztec and a Boeing 737-200. Training is further supported with resources such as our Flight Training and Navigation simulators plus a variety of gas turbine engines including a Rolls Royce RB-211 Turbofan.

Our Aircraft Maintenance Engineering degree will provide you with hands-on experience and our tutors are industry specialists. We pride ourselves on having tutors who have real-world experience of the industry you are passionate about and who will help send your future soaring.

## STUDY WITH US AND YOU WILL:

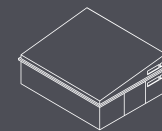
- have the opportunity to undertake industry visits to enrich your studies.
- be taught by industry-experienced tutors who know what it takes to succeed.
- really get to know your classmates through learning in smaller groups.
- be assessed in a variety of ways including projects, written assessments and presentations.
- build valuable employer contacts through networking events.



**WE'VE RECENTLY INVESTED IN A BEECHCRAFT PREMIER 1 BUSINESS JET!**

## JOBS DIRECTLY RELATED TO AVIATION QUALIFICATIONS INCLUDE:

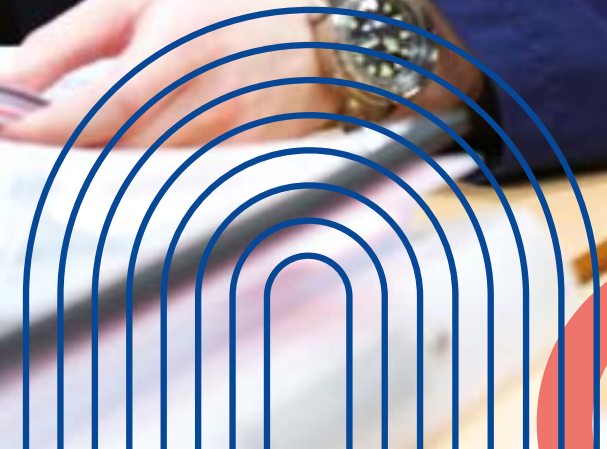
B1.1 LICENCED AIRCRAFT ENGINEER  
 LICENCED AIRCRAFT MECHANIC  
 UNLICENCED AIRCRAFT MECHANIC  
 AIRCRAFT INTERIOR FITTER  
 AIRCRAFT PLANNING  
 AIRWORTHINESS SURVEYING  
 TECHNICAL PUBLICATION  
 AUTHORIZING



AVIATION STUDENTS  
 STUDY IN OUR AVIATION  
 ACADEMY.

## INDUSTRY SUPPORTERS:

**BRITISH AIRWAYS**





## BSc (HONS) AIRCRAFT MAINTENANCE ENGINEERING

DURATION: 3 YEARS

ENTRY REQUIREMENTS: 80 UCAS POINTS

UCAS CODE: 4Q58

This Aircraft Maintenance Engineering degree is the only degree of its kind in the North East and the course content is in line with the UK Civil Aviation Authority (UK CAA) Part 66 category B1.1 Aircraft Maintenance Engineering license syllabus. You will be taught aerodynamics, aircraft systems and maintenance practices by tutors who have many years of experience in aircraft maintenance engineering as well as the military. You will study at Newcastle College Aviation Academy, a Part 147 training facility, audited and approved by the UK Civil Aviation Authority (CAA) based at Newcastle International Airport.



### STAFF PROFILE

**JIM KING**  
CURRICULUM LEADER

In my six years at Newcastle College I have seen many students go on to achieve great things. I love using the experiences I have had working in the Royal Air Force to inspire the next generation of aircraft engineers.

TAKE A LOOK AT OUR  
AVIATION  
DEGREE ONLINE





# BUSINESS

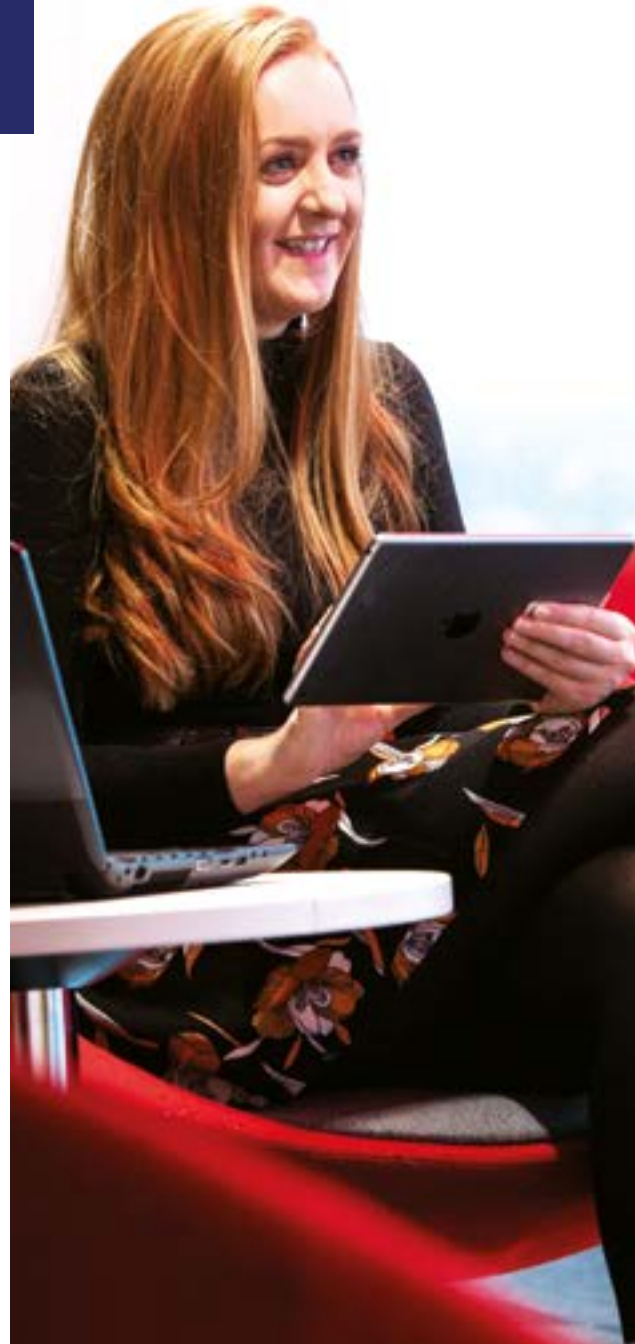
**Whether you want to strike out in business on your own, or work with global companies, start-ups or not-for-profit organisations, our business courses give you the ability and expertise to accelerate your career and gain a solid grounding in how to run a successful and sustainable business.**

Studying Business at Newcastle College University Centre will enable you to gain the knowledge and skills necessary to be a great business all-rounder. You will study a wide range of local and global business issues, developing key transferable skills such as strategic thinking, commercial problem solving and leadership. Each unit focuses on the theoretical knowledge, professional expertise and work-based learning relevant to a variety of areas including management, human resources, marketing, accounting, business strategy and business law.

Our tutors are industry-experienced and know how businesses work in practice, sharing the experience of real-world problems and solutions to enhance your learning.

## STUDY WITH US AND YOU WILL:

- be taught by industry-experienced tutors who know what it takes to succeed.
- benefit from the collaboration that comes from smaller class sizes.
- graduate with additional qualifications accredited by professional bodies alongside your studies to enhance your employability.
- benefit from industry expertise through our guest lecture series.
- be assessed in a variety of ways including case studies, workshops, reports, portfolios and presentations.
- gain the practical experience needed to impress potential employers.
- have access to a wide range of academic and pastoral support to help you succeed.



## JOBS DIRECTLY RELATED TO BUSINESS QUALIFICATIONS INCLUDE:

BUSINESS ADVISER  
**BUSINESS MANAGER**  
 PROJECT MANAGER  
**FINANCE MANAGER**  
 HR MANAGER  
**OFFICE MANAGER**  
 MARKETING MANAGER  
**TEAM LEADER**

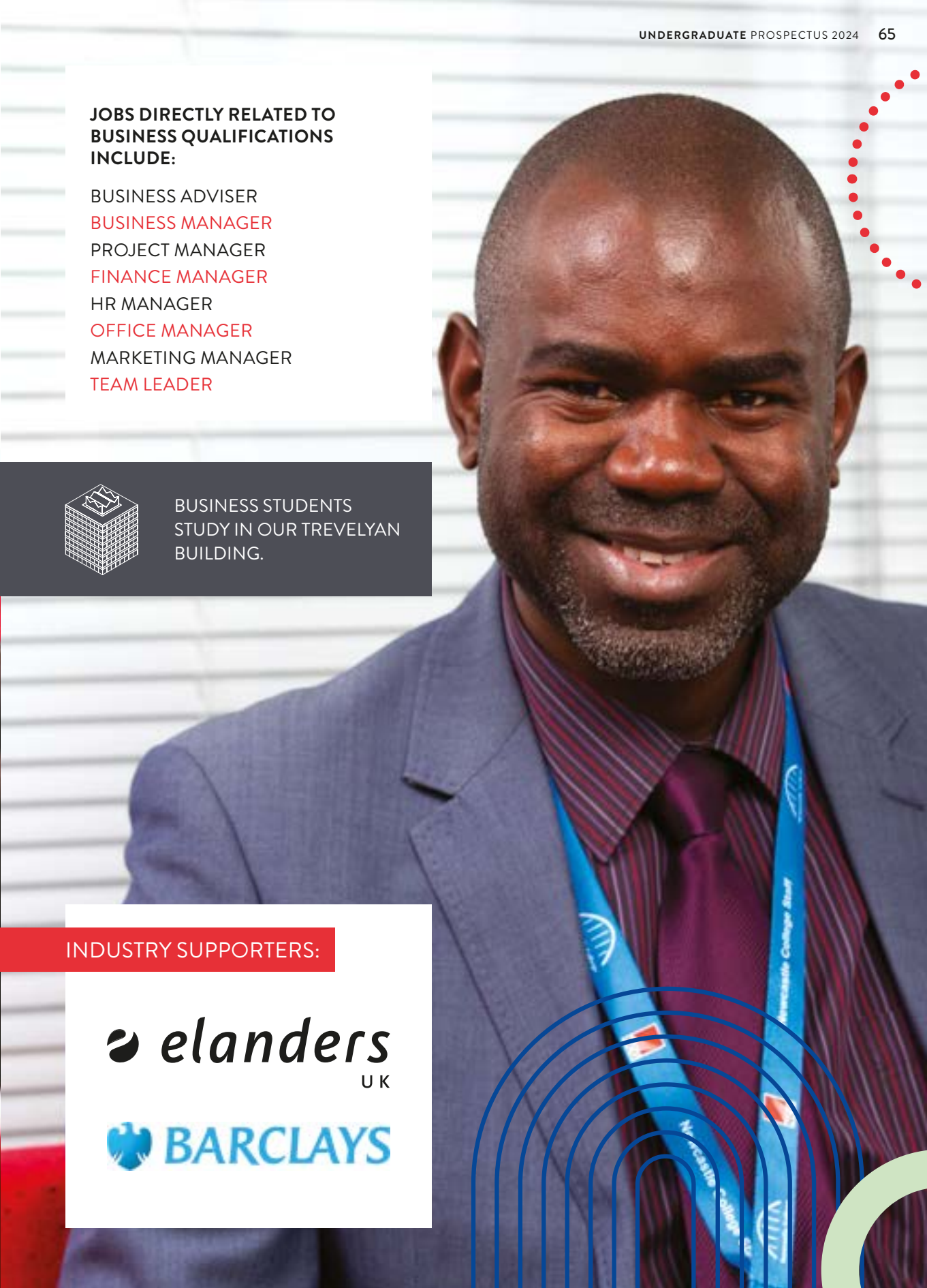


BUSINESS STUDENTS  
 STUDY IN OUR TREVELYAN  
 BUILDING.

## INDUSTRY SUPPORTERS:

 **elanders**  
 U K

 **BARCLAYS**





## F&A BUSINESS MANAGEMENT



**DURATION:** 2 YEARS  
**ENTRY REQUIREMENTS:**  
 64 UCAS POINTS  
 UCAS CODE: N190

A Business Management Foundation Degree from Newcastle College University Centre will give you the skills and knowledge you need to build a strong foundation for future success within the private, public and not-for-profit business sectors. This two-year degree will not only develop your ability to transform initial business ideas and concepts into innovative campaigns, but you will also work on live briefs from a variety of businesses to better understand the challenges of operating within a dynamic business environment.

This course has been designed in collaboration with local and national employers to ensure that the knowledge and employability skills that you gain will give you the edge when it comes to securing your first graduate job. You will cover the main areas of business including finance, marketing, human resources and leadership as well as specialist modules to give you a competitive edge in your career.

## BA (HONS) BUSINESS MANAGEMENT (TOP-UP)

**DURATION:** 1 YEAR  
**ENTRY REQUIREMENTS:** FOUNDATION DEGREE OR EQUIVALENT IN A RELATED AREA  
 UCAS CODE: N200

This BA (Hons) Business Management (Top-Up) degree will develop your individual management and business acumen, getting you ready for life in industry. You will cover a range of factors affecting businesses in the current climate, such as what drives firms to develop and grow, marketing techniques, the challenges of management, the impact of digital technologies, the challenges of leading organisations and the ethical standards of businesses. You will cover many key themes during this degree including entrepreneurship, ethical management, research skills and change management, enabling you to have the well-rounded knowledge and skills you need in the modern world of business.



### STAFF PROFILE

**EMILY WHITE**  
 CURRICULUM LEADER

In the Business Academy, we take pride in the fact that our lecturers are subject specialists. Our modules are developed and designed with local and national industry consultants. All of our sessions are devised to prepare students with the most important knowledge and skills to be successful within business.

TAKE A LOOK  
 AT OUR BUSINESS  
 DEGREES ONLINE



### STUDENT PROFILE

**GEORGIA O'NEILL**  
 BUSINESS STUDENT

Studying here has opened my eyes to the employment opportunities available to me, and helped me decide my future specialisms. I've also learnt life skills, like how to write academically and how to manage business finances effectively. I've also become more confident about going out and looking for job roles, since I know I have the skills and experience to support my applications thanks to my time at Newcastle College University Centre.



# CHILDCARE

**Providing opportunities and developing the skills and knowledge of children and young people is something that you are very passionate about.**

With a Childcare degree at Newcastle College University Centre, you will gain the skills you need to work with children in a range of environments, such as schools, early years' settings, youth centres and outreach centres.

If you are passionate about the development of children and young people and see your career in an industry that really makes a difference, our childcare degrees will help you take that next step.

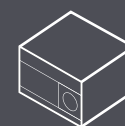
## STUDY WITH US AND YOU WILL:

- have access to our childcare training rooms, designed to train students in early years' settings and school age childcare.
- undertake a work placement to develop your personal and professional skills.
- benefit from industry expertise through our guest lecture series.
- work on live projects set by employers to give you an insight into your chosen sector.
- learn in smaller class sizes for more one-to-one tutor support.
- be taught by industry-experienced tutors who know what it takes to succeed.
- be assessed in a variety of ways including projects, examinations, reports and presentations.



### **JOBS DIRECTLY RELATED TO CHILDCARE QUALIFICATIONS INCLUDE:**

TEACHING ASSISTANT  
 EDUCATION CONSULTANT  
 FAMILY SUPPORT WORKER  
 LEARNING MENTOR  
 SPECIAL EDUCATIONAL NEEDS  
 CO-ORDINATOR  
 YOUTH WORKER  
 NURSERY MANAGER  
 SOCIAL WORKER  
 TEACHER  
 COUNSELLOR



CHILDCARE STUDENTS  
 STUDY IN OUR TEACHING  
 DEVELOPMENT CENTRE.



## F&A CHILDREN AND YOUNG PEOPLE

DURATION: 2 YEARS  
ENTRY REQUIREMENTS: 64 UCAS POINTS  
UCAS CODE: L590



This degree in Children and Young People will open up a range of career opportunities for you within schools, early years environments, youth work, outreach and working with children with additional needs. If you are passionate about working with children and child development, this degree is the perfect platform to a rewarding career. You will cover a variety of topics such as child development, safeguarding and the National Curriculum, all from tutors with many years of experience working in the sector.

## BA (HONS) CHILDREN AND YOUNG PEOPLE (TOP-UP)

DURATION: 1 YEAR  
ENTRY REQUIREMENTS: FOUNDATION DEGREE OR EQUIVALENT IN A RELATED AREA  
UCAS CODE: L591

This Children and Young People degree will allow you to build on the professional skills and knowledge you gained at Foundation Degree level. It is also the next step towards a PGCE qualification if you are looking to go into teaching. You will be committed, motivated, be passionate about working with children and want to make a positive impact on their development. You will cover topics such as safeguarding, young people in society and equality and diversity, learning from tutors who have worked in a variety of roles in nurseries, schools and education and youth settings. You will also develop enhanced research skills by completing a dissertation on an area of your choice.



### STAFF PROFILE

#### SONIA GRAY LECTURER

I have worked in the childcare sector for over 15 years as a Nursery Manager, SENCo and a Safeguarding Lead. Over this period, I have supported students within the sector to gain skills, experiences and knowledge which supported their placement experiences.



TAKE A LOOK  
AT OUR CHILDCARE  
DEGREES ONLINE



### STUDENT PROFILE

#### GEMMA THOMPSON CHILDCARE STUDENT

My degree has definitely given me the experience, the knowledge and the skills I need to progress onto my employment goals. Thanks to the placement I secured through the University Centre, it's also given me the experience of working within a classroom and seeing how the day-to-day life of a primary school class plays out.

I honestly couldn't ask for more from the University Centre staff, they've all been so helpful across the board in helping me to prepare for my future employment and to figure out my long-term career path as much as I can.





# COMPUTING

The computing and digital technologies industry is one of the most fast-paced and evolving industries in the world. As a Computing student, you will be creative, technical and know how to use your skills in a competitive field. Throughout your studies you will use your analytical, logical, creative and problem-solving skills to build, design and test networks, software, games technologies and digital solutions.

Our Computing degrees have been designed alongside industry specialists, giving you a critical insight into computing in the working world. Learning from industry-experienced tutors, you will build practical and analytical skills, readying you for a rewarding and exciting career in the industry you love.

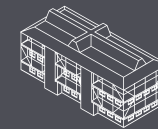
## STUDY WITH US AND YOU WILL:

- have the opportunity to undertake exciting placements with regional, national and international organisations.
- be taught in smaller class sizes by industry-experienced tutors who know what it takes to succeed.
- work on live briefs set by employers and benefit from guest speaker lectures. Previous students have worked on briefs for Proto, Zerolight, Sumo Digital, DXC and Four Fusion.
- have the chance to go on national and international field trips to enrich your studies.
- benefit from industry insight through our guest lecture series.
- meet potential employers through networking events.

**WE'VE RECENTLY  
INVESTED IN A 3D  
POWERWALL!**

## JOBS DIRECTLY RELATED TO COMPUTING QUALIFICATIONS INCLUDE:

APPLICATIONS DEVELOPER  
 CYBER SECURITY ANALYST  
 DATA ANALYST  
 GAMES DEVELOPER  
 NETWORK ENGINEER  
 MULTIMEDIA PROGRAMMER  
 SOFTWARE DEVELOPER  
 SYSTEMS ANALYST  
 UX DESIGNER  
 WEB DEVELOPER  
 PROJECT MANAGER  
 PENETRATION TESTER  
 SUPPORT TECHNICIAN



COMPUTING STUDENTS  
STUDY IN OUR MANDELA  
BUILDING.

## INDUSTRY SUPPORTERS:



w@terstons





## FdSc GAMES TECHNOLOGIES

DURATION: 2 YEARS  
ENTRY REQUIREMENTS: 64 UCAS POINTS  
UCAS CODE I161

This Games Technologies Foundation Degree allows you to explore your creative side as well as develop advanced technical skills to set you up for a rewarding career in programming, 3D design or games development. You will learn from highly skilled tutors with extensive experience of designing and developing games. You will have an interest in how the front-end and back-end of games are created and cover topics such as games design, animation and modelling. Developed with industry professionals including Tombola, Sumo Digital and Pocket Money Games, this degree will help you develop communication skills, project management and professionalism as you will be working with real clients on live projects set by employers. You will also have the opportunity to study an Adobe Qualification of your choice.

## FdSc NETWORKING AND CYBER SECURITY

DURATION: 2 YEARS  
ENTRY REQUIREMENTS: 64 UCAS POINTS  
UCAS CODE: 2B9L

This exciting Networking and Cyber Security Foundation Degree is the only one of its kind in the North East that focuses solely on networking and cyber security and has been developed with input from industry professionals. You will build secure networks, assess the vulnerability of networks and carry out open source investigation. You will use analytical, methodical skills and have a curious mind with the ability to make decisions and problem-solve. You will use industry-standard Cisco equipment as well as network simulation software and learn Python programming and Windows server administration, all from tutors with extensive knowledge and experience of networking and cyber security. You will also have the opportunity to study a Microsoft Technical Associate (MTA) qualification of your choice.



### STAFF PROFILE

#### MURRAY LAMBERT LECTURER

I enjoy delivering technical modules with a practical outcome. I get to use my experience working on industry projects to help students develop their skills in 3D modelling, texturing and animation. It's very rewarding to see students bring their own ideas to life, from a simple concept all the way to a character they can move around in a game.

## FdSc SOFTWARE ENGINEERING

DURATION: 2 YEARS  
ENTRY REQUIREMENTS: 64 UCAS POINTS  
UCAS CODE: G612

This Software Engineering Foundation Degree will prepare you for a fulfilling and exciting career within the ever-growing computing industry. The demand for talented and specialised employees who can design, develop and implement software applications and databases is growing, and this demand shaped the design and content of this degree. Working alongside industry-experienced tutors and with fantastic facilities, this practical degree will provide you with a strong foundation for your career ahead.

At Newcastle College University Centre we have collaborated with key industry contacts in the region so you will get relevant, career-focused training in a range of computing areas. Alongside this qualification, you will also be accredited with a Software Developer Higher Technical Qualification (HTQ).



## BSc (HONS) GAMES TECHNOLOGIES (TOP-UP)

DURATION: 1 YEAR  
ENTRY REQUIREMENTS: FOUNDATION DEGREE OR EQUIVALENT IN A RELATED AREA  
UCAS CODE: I600

This Games Technologies degree has been developed in collaboration with employers including Sumo Digital, Blazing Griffin and Pocket Money Games and is ideal if you are looking to pursue a career in the gaming industry. You will acquire specialist industry knowledge and learn how to produce blueprints for games, consider how mobile-friendly versions are made and gain the technical expertise to create them. You will have a passion for design and a creative flair, but also possess an analytical mind and want to gain a deeper understanding of the back-end of games and how they are developed. You will use industry-standard software and equipment such as VR headsets to support your studies.

## BSc (HONS) COMPUTING (TOP-UP)

DURATION: 1 YEAR  
ENTRY REQUIREMENTS: FOUNDATION DEGREE OR EQUIVALENT IN A RELATED AREA  
UCAS CODE: G500

This Computing (Top-Up) degree has been designed to lead you into an exciting career in computing or a more specialised career in networking and cyber security. Alongside the compulsory modules on this degree, you will have the opportunity to choose two further modules depending on your interests and career aspirations. The optional modules include systems development, web APIs, advanced networking and digital forensics. As a Computing student you will also have access to our dedicated networking lab with its own private internal network, allowing you to build your own network using the latest industry-standard hardware and software.

TAKE A LOOK  
AT OUR COMPUTING  
DEGREES ONLINE



### STUDENT PROFILE

#### KIERON WEST COMPUTING STUDENT

What I enjoy most about my Computing degree is the friendships I've made and knowledge I've gained along the way. I've always looked forward to coming onto campus to hang out with my friends while doing work that I absolutely love. It's a real win-win!

# CRIMINOLOGY, POLICING AND CRIMINAL LAW

**As a Criminology, Policing and Criminal Law student, you know how important it is to protect the public. You are a practical and logical thinker, looking to develop your skills and start a fulfilling career in the protection services.**

A Criminology, Policing and Criminal Law degree at Newcastle College University Centre will give you the foundation you need to kick-start your career in industry. Our practical courses are taught by former police officers and criminal justice workers, and have close links to industry specialists such as the Northumbria Police Crime Commissioner, the Violence Reduction Unit, British Transport Police and a range of North East law firms.

If you want a fulfilling and challenging career in a vital industry, start your journey with us.

## STUDY WITH US AND YOU WILL:

- be taught by industry-experienced tutors who know what it takes to succeed.
- really get to know your classmates through learning in smaller class sizes.
- have the opportunity to undertake additional qualifications such as first aid.
- benefit from industry expertise through our links to third sector organisations.
- have access to a fully-equipped sports hall and gym, to improve and develop your levels of fitness.
- have the opportunity to gain relevant and rewarding work experience in countries such as Italy, Malta and South Africa.

**JOBS DIRECTLY RELATED TO CRIMINOLOGY, POLICING AND CRIMINAL LAW QUALIFICATIONS INCLUDE:**

POLICE OFFICER  
 PRISON OFFICER  
 IMMIGRATION OFFICER  
 YOUTH OFFENDING OFFICER  
 CUSTOMS HANDLER  
 COMMUNITY DEVELOPMENT WORKER  
 YOUTH WORKER  
 NHS FRAUD INVESTIGATOR  
 PROBATION OFFICER  
 SECURITY SERVICES  
 BORDER AGENCY



CRIMINOLOGY, POLICING AND CRIMINAL LAW STUDENTS STUDY AT THE VERTU MOTORS ARENA AND RYE HILL CAMPUS.





## FdSc CRIMINOLOGY, POLICING AND CRIMINAL LAW

DURATION: 2 YEARS  
ENTRY REQUIREMENTS: 64 UCAS POINTS  
UCAS CODE: C610

This Criminology, Policing and Criminal Law Foundation Degree will provide you with the necessary knowledge, skills and behaviours needed for working within a variety of roles within the criminal justice system. Throughout the programme you will have the opportunity to explore different disciplines (both theoretically and practically) including policing, youth justice, prison services and the criminal prosecution service. You will learn in simulation rooms and be immersed in virtual reality as part of your studies, as well as benefiting from hearing first-hand experiences from guest speakers including the probation service, British Transport Police and third-sector charities.



### STUDENT PROFILE

**BRANDON EDWARDS-JARY**  
CRIMINOLOGY, POLICING  
AND CRIMINAL LAW STUDENT

The tutors here are so supportive. They've been behind me every step of the way, making sure I get through my course and succeed. If you'd said to me, say five years ago, that I'd be graduating with a degree I'd have laughed at you, but here I am!



TAKE A LOOK AT OUR  
CRIMINOLOGY, POLICING  
AND CRIMINAL LAW  
DEGREE ONLINE



# DIGITAL ARTS

If you want to turn your passion for creativity into a fulfilling and exciting career, a degree in Digital Arts from Newcastle College University Centre will boost your skills, refine your flair and give you a creative environment where you will thrive with like-minded peers.

Our degrees will give you a broad experience of the digital arts industry where you will access first-class facilities and software such as Cinema 4D and VR headsets, Mac suites, animation, illustration and visual FX workshop, green screen facilities and screen print studios.

Getting you ready for a thrilling career in the digital industry is one of our top priorities. Not only will you learn from industry-experienced tutors, but our previous students have worked with specialists on live briefs and campaigns for companies such as Channel 4, Live Theatre and Penguin Books.

If you are a creative who thrives on telling stories through their work, you will love studying with us.

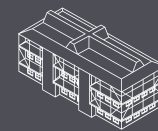
## STUDY WITH US AND YOU WILL:

- have the opportunity to undertake exciting placements with regional, national and international organisations.
- be taught in smaller class sizes by industry-experienced tutors who know what it takes to succeed.
- work on live briefs set by employers and benefit from guest speaker lectures.
- have the chance to go on national and international field trips to enrich your studies.
- exhibit your work at end of year shows.
- benefit from industry insight through our guest lecture series.
- meet potential employers through networking events.



## JOBS DIRECTLY RELATED TO DIGITAL ARTS QUALIFICATIONS INCLUDE:

ANIMATOR  
 GRAPHIC DESIGNER  
 ILLUSTRATOR  
 WEB DESIGNER  
 3D MODELLER  
 EFFECTS ANIMATOR  
 DIGITAL DESIGNER  
 MOTION GRAPHICS DESIGNER  
 UI/UX DESIGNER  
 PHOTOGRAPHER  
 RETOUCHER



DIGITAL ARTS STUDENTS STUDY IN OUR MANDELA BUILDING (SCHOOL OF ART AND DESIGN).

## INDUSTRY SUPPORTERS:

**TrendBible**

**PICTO PLASMA**

**SIEMENS Gamesa**  
RENEWABLE ENERGY





## F&A GRAPHIC COMMUNICATION

**DURATION:** 2 YEARS  
**ENTRY REQUIREMENTS:** 64 UCAS POINTS  
**UCAS CODE:** W213

Explore emerging trends and technologies on this Graphic Communication degree. This degree will help you build a solid foundation in graphic design, advertising and interactive design such as web design, app design and related digital design. Learn traditional design principles and values, specialist technical skills and develop your creative excellence by responding to real client briefs with imaginative solutions. In your second year, you will have the opportunity to focus more on where your passions lie and develop your personal style while creating a specialist portfolio of work. If you are an innovative problem solver, love to take creative risks and throw yourself into every aspect of design, this is the degree for you.

## F&A CREATIVE VIDEO CONTENT PRODUCTION

**DURATION:** 2 YEARS  
**ENTRY REQUIREMENTS:** 64 UCAS POINTS  
**UCAS CODE:** W6P3

If you are a natural storyteller, this degree will help you turn your ideas into creative content which sells. Learn how to shoot, edit and produce engaging videos for business, TV and film using industry tools and software. You will have access to facilities including an editing suite, 4K TV studio, photography studio and rehearsal rooms. You will engage with creative agencies, responding to live briefs to put your skills into practice and develop your entrepreneurial skills through freelance work and a social endeavour project, producing content to help market a local business or charity. This degree is supported by Trend Bible, Siemens and Ramsdens.

## BA (HONS) ANIMATION

**DURATION:** 3 YEARS  
**ENTRY REQUIREMENTS:** 64 UCAS POINTS  
**UCAS CODE:** WW27

This BA (Hons) Animation degree has been designed with organisations including Arcus Studios, Novak and Three Motion to meet the growing need for skilled animators in the sector. If you are passionate about digital and traditional animation, enjoy working with technology and are a natural problem solver, this is the degree for you. You will explore a broad range of animation techniques and processes to develop your practice and bring your ideas to life. You will learn from tutors with many years' experience of the animation industry and cover topics such as character design and development, storytelling and principles of design. You will use industry-standard software such as Cinema 4D and VR headsets.

## BA (HONS) PHOTOGRAPHY

**DURATION:** 3 YEARS  
**ENTRY REQUIREMENTS:** 64 UCAS POINTS  
**UCAS CODE:** W640

This practical degree is affiliated with the Association of Photography and will teach you fundamental technical and studio skills, such as lighting, camera operation, dark room practice and location photography. Developed in consultation with photographer Christine Harding, Mark Taylor and Mike Baster, this degree is focused on commercial photography and 'capturing a moment'. You will be passionate about the visual world and have strong communication skills, vital on any photo shoot. You will study topics such as composition and the history of photography as well as covering areas of photography, including still life, portraiture, food and editorial to help you become a well-rounded photographer.

TAKE A LOOK  
 AT OUR DIGITAL ARTS  
 DEGREES ONLINE



## STUDENT PROFILE

**CAITLIN ORRIDGE**  
 DIGITAL ARTS STUDENT

My highlight isn't so much one single moment as it has been my personal growth and development. When I first came to Newcastle College University Centre, I was shy, lacking in confidence and unsure of my path in photography.

I now know exactly what I want to do and my best friends are people that I met through studying at the University Centre.





## BA (HONS) ILLUSTRATION

DURATION: 3 YEARS

ENTRY REQUIREMENTS: 64 UCAS POINTS

UCAS CODE: WW28

Our Illustration degree prides itself on innovation and new approaches to working with narrative visualisation through a host of personal and client-based projects. The practical techniques that are delivered develop both traditional and digital skills with the emphasis on drawing and visualisation techniques as a foundation for studio practice. You will be introduced to alternative methods of working that allow a free flow of creative and experimental work to be produced, as well as a clear understanding of industry practice and workflows that will benefit you in your future career within the creative industries. During this degree, you will have experience working with print making, digital visualisation in 2D and 3D as well as traditional drawing and painting.

## BA (HONS) AUDIO VISUAL PRODUCTION (TOP-UP)

DURATION: 1 YEAR

ENTRY REQUIREMENTS: FOUNDATION DEGREE OR EQUIVALENT IN A RELATED AREA

UCAS CODE: W6P6

Get ready for action with this degree, which will help you put the skills you developed at Foundation level into practice. Spend your year self-directing a creative project of your own by developing, producing and distributing a commercially viable drama, documentary or corporate video production. You will have the freedom to explore your own ideas and will blog about your journey, all with the support of creative industry and business networks who will encourage you to submit your work to local and national film festivals. Underpinning your experience will be practical workshops and masterclasses to help you continue to develop your production skills.

## BA (HONS) GRAPHIC COMMUNICATION (TOP-UP)

DURATION: 1 YEAR

ENTRY REQUIREMENTS: FOUNDATION DEGREE OR EQUIVALENT IN A RELATED AREA

UCAS CODE: W214

This hands-on, practical Graphic Communication degree will teach you the fundamental processes and principles of graphic communication, digital design and creative advertising. You will study topics such as branding, user design and user interface and apply your learning in a real-life working context by solving communication-based issues for clients. You will be highly creative, a problem solver and enjoy drawing as well as digital techniques. You will be taught by tutors with many years of experience working in the industry who will support you to develop your professional skills and your ability to work as part of a multi-disciplinary team.



### STAFF PROFILE

**PAUL SMITH**  
LECTURER

I run my own 3D animation company and I'm one of the lecturers on the BA (Hons) Animation course. I try to not only bring in industry skills but also push experimentation with new technologies to further our students' skills.





# ENERGY

**The energy industry is growing at a rapid pace and the need for experienced graduates with the skills for industry is increasing year-on-year. An Energy degree at Newcastle College University Centre will give you the experience, knowledge and skills to become a multi-skilled and proficient graduate.**

As a technical and methodical thinker, you will be passionate about building a career within the energy sector. Our Energy degrees have been designed alongside our industry supporters including Offshore Renewable Energy Catapult, Royal IHC, Subsea North East and Port Training Services, and will give you experience of energy engineering in a real-working environment.

Learning at our purpose-built Energy Academy, you will have access to industry-standard facilities such as a working wind turbine and develop your knowledge of design, subsea equipment, hydraulics, electrics, mechanics and maintenance.

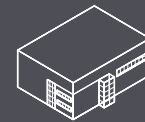
## STUDY WITH US AND YOU WILL:

- study at our Energy Academy – a centre for innovation, training and development for the offshore renewables and energy sector.
- have the opportunity to undertake industry visits to enrich your studies.
- prepare for work in the energy sector with facilities including a working wind turbine as well as industry-standard equipment.
- be taught by industry-experienced tutors who know what it takes to succeed.
- build valuable employer contacts through networking events.

**WE'VE RECENTLY  
INVESTED IN AN  
INDUSTRIAL  
DRONE!**

## JOBS DIRECTLY RELATED TO ENERGY QUALIFICATIONS INCLUDE:

ENERGY ENGINEER  
**ENERGY MANAGER**  
 SUSTAINABILITY CONSULTANT  
**ANALYSIS ENGINEER**  
 MARINE CONTRACTOR  
**SUBSEA FIELD ENGINEER**  
 SUBSEA INSTALLATION ENGINEER



ENERGY STUDENTS  
STUDY AT OUR ENERGY  
ACADEMY.

## INDUSTRY SUPPORTERS:



**CATAPULT**  
Offshore Renewable Energy



## FdEng ENERGY ENGINEERING

DURATION: 2 YEARS

ENTRY REQUIREMENTS: 64 UCAS POINTS\*

UCAS CODE: H221

The £250million investment in the wind sector is set to triple the number of jobs by 2030. To help meet this demand, this Energy Engineering degree aims to produce multi-skilled work-ready graduates who are able to make an impact within the energy sector. The only one of its kind in the North East and taught from our specialist Energy Academy, you will develop core hand-tool skills and become knowledgeable in solar, geothermal, hydro and tidal power. Supported by Offshore Renewable Energy Catapult, Royal IHC, Subsea North East and Port Training Services, you will gain an in-depth understanding of the industry whilst also having access to a working wind turbine.

*\*must be in engineering/maths and/or science disciplines.*

## BEng (HONS) ENERGY ENGINEERING (TOP-UP)

DURATION: 1 YEAR

ENTRY REQUIREMENTS: RELEVANT FOUNDATION

DEGREE IN ENGINEERING, MATHS AND/OR

SCIENCE SUBJECTS

UCAS CODE: HH42

This Top-Up degree will allow you to develop your understanding of deeper engineering theories and practices within the renewables and subsea sector and add to knowledge you already have by exploring current industry concepts and problems. You will explore a variety of core vocational modules and take the opportunity to take theory and put it into engineering practice. You will study modules in Fuels and Energy Systems, Smart Grid Technologies and Energy Management and Economics. Alongside this, an industry-focused dissertation will be completed to allow you to focus on a unique specialism of your interest, focusing your engineering passion towards a specific set of problems.



TAKE A LOOK  
AT OUR ENERGY  
DEGREES ONLINE



# ENGINEERING

**You are a technical and methodical thinker with a desire to find solutions to any problems you come across. As an Engineering student at Newcastle College University Centre, you will thrive as you develop the skills you need for a successful career in industry.**

Learning in our industry-standard facilities, you will have access to our state-of-the-art CAD suites and equipment such as CNC, robotics, 3D printers, 3D scanners, metalwork lathes and fabrication tools. You will be encouraged to apply for and work towards EngTech status, giving you the edge as an Engineering graduate. Our degrees are linked extensively with industry. You will have the opportunity to work with big names in the industry throughout your studies including IHC, Renolit IMechE and Siemens.

If you seek to build a rewarding career, start your engineering journey with us.

## STUDY WITH US AND YOU WILL:

- access equipment including a full fabrication shop, a manual machine shop, CNC area including a five axis CNC mill, 3D printing and industry-standard design software including SolidWorks.
- have access to manufacturing equipment including PLCs, microprocessors, electronic circuit construction equipment and software including MATLAB and Multisim.
- have the opportunity to undertake industry visits to enrich your studies.
- be taught by industry-experienced tutors who know what it takes to succeed.
- build valuable employer contacts through networking events.

**WE'VE RECENTLY  
INVESTED IN  
A CNC LATHE  
MACHINE!**

**JOBS DIRECTLY RELATED TO  
ENGINEERING QUALIFICATIONS  
INCLUDE:**

AUTOMATION ENGINEER  
**MECHANICAL ENGINEER**  
 DESIGN ENGINEER  
**ELECTRICAL ENGINEER**  
 ELECTRONICS ENGINEER  
**MECHATRONICS ENGINEER**



ENGINEERING  
STUDENTS STUDY IN OUR  
RUTHERFORD BUILDING.

## INDUSTRY SUPPORTERS:







## FdEng ENGINEERING

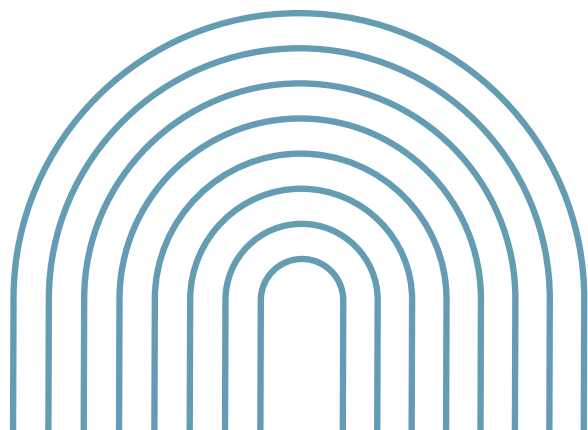
DURATION: 2 YEARS

ENTRY REQUIREMENTS: 64 UCAS POINTS\*

UCAS CODE: HH40

The FdEng Engineering course is designed to kick-start your engineering career, developing your skills in a specific discipline and providing a strong engineering foundation. You will build upon your basic engineering knowledge and develop advanced practical and theoretical skills in preparation for employment or further study. This Engineering course offers progression for those who have studied a related course during further education and provides an excellent balance of academic and industrial knowledge. It offers a pathway into mechanical or electrical engineering for those who may not have any previous experience of engineering as a subject but do have a strong maths or physics background.

*\*must be in engineering/maths and/or science disciplines.*



## STUDENT PROFILE

### GRACE LILLEY ENGINEERING STUDENT

I've learnt and developed so many transferable skills that employers are looking for, especially in graduate positions. Skills like clear and effective communication, time management and self-motivation are all important for employers.





## BSc (HONS) ENGINEERING MANAGEMENT (TOP-UP)

DURATION: 1 YEAR

ENTRY REQUIREMENTS: RELEVANT FOUNDATION DEGREE IN ENGINEERING, MATHS AND/OR SCIENCE SUBJECTS  
UCAS CODE: H190

This Engineering Management degree is designed to challenge the norm when it comes to efficient engineering solutions, whilst enhancing and developing your skills in various management and leadership techniques. You will use your engineering knowledge and skills to investigate and analyse areas such as product development, project management, productivity and competitiveness in preparation for employment and/or further study. The course is delivered by tutors with a wealth of experience in a diverse range of sectors and you will benefit from industry-experienced guest speakers including Royal IHC, Renolit, Port of Blyth and IMech E. If you already work within engineering and are ready to take your career to the next level, this course is designed to help you progress into a management or leadership role.

If you successfully complete the BSc (Hons) Engineering Management (Top-Up) degree you will also receive a Chartered Management Institute (CMI) accreditation.

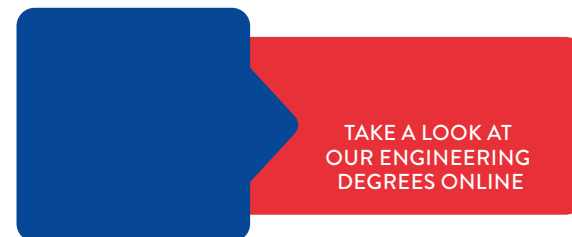


## BEng (HONS) ELECTRICAL ELECTRONIC ENGINEERING (TOP-UP)

DURATION: 1 YEAR

ENTRY REQUIREMENTS: RELEVANT FOUNDATION DEGREE IN ENGINEERING, MATHS AND/OR SCIENCE SUBJECTS  
UCAS CODE: H601

The BEng (Hons) Electrical Electronic Engineering (Top-Up) degree will give you advanced practical experience working with specialist facilities including simulation software such as MATLAB and, as an Engineering student at Newcastle College University Centre, you will have access to a range of industry-standard equipment in practical environments. During this practical degree you will study programming embedded microcontrollers using C Language, and enhance practical and theoretical concepts of digital electronics and electrical power systems by studying and building digital electronic circuits used in industrial environments. You will also learn about HVDC, synchronous and asynchronous machines and single and three phase power systems used in electrical power industrial applications. This Top-Up degree will also provide you with a balance of interpersonal skills and industrial knowledge from using an industrial approach to electrical electronic, control and industrial engineering techniques.



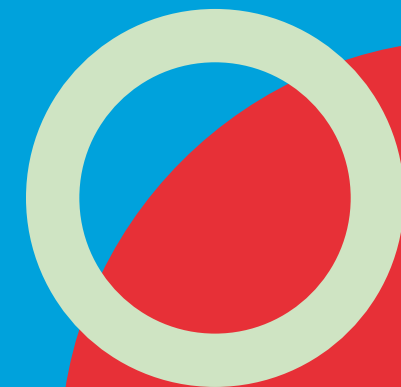
## BEng (HONS) MECHANICAL MANUFACTURING ENGINEERING (TOP-UP)

DURATION: 1 YEAR

ENTRY REQUIREMENTS: RELEVANT FOUNDATION DEGREE IN ENGINEERING, MATHS AND/OR SCIENCE SUBJECTS  
UCAS CODE: HH3R

The BEng (Hons) Mechanical Manufacturing Engineering (Top-Up) degree has been developed to offer a balance of academic and industrial knowledge to meet the needs of key employers within the North East region, along with national and international businesses. During this degree you will explore engineering principles in a range of applied mechanical applications, manufacturing systems and processes, modelling and analysis and product development, as well as gaining practical experience of destructive and non-destructive testing, finite element analysis and fracture mechanics.

This course is mapped against the academic requirements of the Engineering Council UK-Spec for Incorporated Engineering (IENG) status and students are encouraged to join the Institute of Mechanical Engineering (IMechE) as a student affiliated member.





# HEALTH AND SOCIAL CARE

**Our mission is to inspire the next generation of care workers in the UK, developing our graduates to deliver outstanding service, compassion and an unwavering dedication to good practice.**

This is your first step into the world of health and social care and as you join the community at Newcastle College University Centre, you will have the opportunity to collaborate with like-minded peers. You will learn all of the skills and knowledge you need to become an outstanding healthcare professional.

We prepare our students for careers in the health and social care sectors and provide exceptional facilities in simulated environments such as our Counselling Suite and in-house hospital ward.

If you are passionate about making a difference to the lives of others, a degree in Health and Social Care at Newcastle College University Centre will provide you with the expertise to be that change.

## STUDY WITH US AND YOU WILL:

- be encouraged to undertake a work placement to develop your personal and professional skills.
- benefit from industry expertise through our guest lecture series.
- work on live projects set by employers to give you an insight into your chosen sector.
- be assessed in a variety of ways including peer assessments, portfolios, presentations and essays.
- be taught by industry-experienced tutors in smaller class sizes so you will really get to know your classmates.



**JOBS RELATED TO HEALTH AND SOCIAL CARE QUALIFICATIONS INCLUDE:**

CARE WORKER  
 HEALTHCARE ASSISTANT  
 COUNSELLOR  
 FAMILY SUPPORT WORKER  
 CASE MANAGER  
 NURSING ASSOCIATE  
 HEALTH SERVICE MANAGER  
 SOCIAL WORKER



HEALTH AND SOCIAL CARE STUDENTS STUDY IN OUR PARSONS BUILDING.

## INDUSTRY SUPPORTERS:

**PARKINSON'S<sup>UK</sup>**

**NHS**



Care and support through terminal illness



## CertHE COUNSELLING SKILLS AND THERAPEUTIC COMMUNICATION

DURATION: 1 YEAR  
ENTRY REQUIREMENTS: 64 UCAS POINTS  
UCAS CODE: L513

The Counselling Skills and Therapeutic Communication course is the first step on your path to becoming a counsellor. This degree provides hands-on, practical learning for those who want to practise counselling or open their own counselling service and is taught by practising counsellors. The CertHE provides excellent progression opportunities and will enable you to develop an understanding of the principles and practices of communication and counselling approaches and will allow you to consolidate learning in practical counselling techniques, informed by the theory of counselling practice.

## CertHE HEALTHCARE PRACTICE

DURATION: 1 YEAR  
ENTRY REQUIREMENTS: 64 UCAS POINTS  
UCAS CODE: L512

This CertHE Healthcare Practice is your first step towards studying a nursing degree. Learning in a simulated hospital environment, this vocational healthcare degree will give you the foundation clinical and nursing skills to progress into further nursing studies and you will benefit from the industry experience of the qualified nurses who teach the degree programme. You will study topics such as psychology, sociology and safeguarding, giving you a foundation knowledge in nursing.

## FdA INTEGRATED HEALTH, SOCIAL CARE AND WELLBEING

DURATION: 2 YEARS  
ENTRY REQUIREMENTS: 64 UCAS POINTS  
UCAS CODE: L540

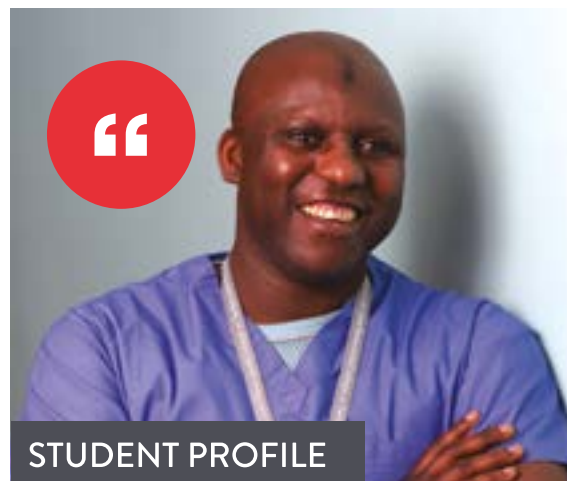
This Foundation Degree in Integrated Health, Social Care and Wellbeing will help you to understand the principles and practices of health, social care and wellbeing in the 21st century. You will study a range of subjects to prepare you for the diverse opportunities within the health and social care sector, as well as learning from the current industry expertise of our extensive range of staff, guest speakers and lecturers.

## FdSc HEALTHCARE PRACTICE

DURATION: 2 YEARS  
ENTRY REQUIREMENTS: 64 UCAS POINTS  
UCAS CODE: L511



This Healthcare Practice degree is an ideal course if you are interested in the health sector and are hoping to pursue a career in a professional healthcare role. This degree will give you the clinical and nursing skills you need to become a nursing practitioner and you will benefit from the industry experience of the qualified nurses who teach on this programme. You will focus on health promotion and learn in a simulated hospital environment. This course has been validated by health professionals and you will benefit from industry insight through guest lectures from the NHS.



### STUDENT PROFILE

#### DAWDA SARJO HEALTH STUDENT

What I enjoy the most is the way I've developed while studying at Newcastle College University Centre. My knowledge has grown significantly while I've studied here, which has really helped me to improve my skills and experience for the workplace. I know that when I enter the nursing field I'll be able to put what I know straight into practice to help people, especially if it were practical clinical work, like knowing PPE policies, maintaining hygienic standards in wards or having good bedside manner.

## FdSc PSYCHOLOGY WITH SOCIOLOGY

DURATION: 2 YEARS  
ENTRY REQUIREMENTS: 64 UCAS POINTS  
UCAS CODE: L541

A Foundation Degree in Psychology with Sociology will help you develop a new understanding of how humans think and why they behave as they do, individually and societally. Learn from our industry-specialist lecturers about diverse topics such as psychological and social theory and research, the impacts of crime, media and intimacy, the psychology of childhood and youth, quantitative research methods and statistics and how contemporary social issues shape childhood psychology.

## BA (HONS) INTEGRATED HEALTH, SOCIAL CARE AND WELLBEING (TOP-UP)

DURATION: 1 YEAR  
ENTRY REQUIREMENTS: FOUNDATION DEGREE OR EQUIVALENT IN A RELATED AREA  
UCAS CODE: L510

This BSc (Hons) Integrated Health, Social Care and Wellbeing (Top-Up) course is an ideal progression route for those looking to further their Foundation Degree in the fields of health, social care and wellbeing. Learn from tutors with extensive industry experience while you build the skills and knowledge needed to gain higher-level jobs in the healthcare industry. You will learn how to respond proactively to changes in the health and social care sector, including developing new strategies for improving community health and wellbeing, while gaining experience to lead and manage healthcare sector workers across a range of disciplines.

TAKE A LOOK  
AT OUR HEALTH  
AND SOCIAL CARE  
DEGREES ONLINE

## BSc (HONS) COUNSELLING SKILLS AND THERAPEUTIC COMMUNICATION (TOP-UP)

DURATION: 1 YEAR  
ENTRY REQUIREMENTS: LEVEL 5 FdSc COUNSELLING SKILLS AND THERAPEUTIC COMMUNICATION  
UCAS CODE: L514

This Counselling Skills and Therapeutic Communication (Top-Up) degree will help you to develop an understanding of the principles and practices of communication and counselling approaches. This health course will allow you to consolidate learning in practical counselling techniques, informed by the theory of counselling practice. This degree will prepare you to help others to cope with their problems, such as mental health issues, and family/relationship issues and the modules you will study will focus on person-centred counselling, current issues and best practice within the sector. Throughout this course you will benefit from current industry expertise through our extensive range of guest speakers and lectures.

## BSc (HONS) PUBLIC HEALTH AND HEALTH IMPROVEMENT (TOP-UP)

DURATION: 1 YEAR  
ENTRY REQUIREMENTS: FOUNDATION DEGREE OR EQUIVALENT IN A RELATED AREA  
UCAS CODE: C2U8

This BSc (Hons) Public Health and Health Improvement (Top-Up) degree will equip you with the skills and knowledge to improve and protect public health and the wellbeing of individuals, communities and populations. You will develop an understanding of the principles and practices of public health and health improvement in the 21st century to tackle major health challenges and reduce inequalities at global, national and local levels. As part of this course, you will have the opportunity to work on live briefs from the Newcastle Public Health Team as well as the opportunity to shadow Public Health Practitioners at work to give you an idea of what it is really like to work in the sector.



# HOSPITALITY AND TOURISM

**Study a Hospitality, Tourism or Aviation Operations degree at Newcastle College University Centre and benefit from 80 years of expertise and excellence.**

As part of our Hospitality degrees, we work with some of the North East's top restaurants such as 21 Group, House of Tides and Six at Baltic, giving our students work placement opportunities and enhanced career prospects.

Our Tourism and Aviation Operations students work with the best too. Throughout your degree you will have the opportunity to work with some of the best names in the business with previous collaborators including NGI, Ramside Estates Ltd, the National Trust, Northumberland County Council and Northumbrian Water at Kielder.

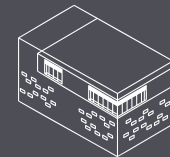
## STUDY WITH US AND YOU WILL:

- have the opportunity to undertake exciting work placements to gain practical work experience.
- really get to know your classmates through learning in smaller class sizes.
- be taught by industry-experienced tutors who know what it takes to succeed.
- be assessed in a variety of ways including written assignments, portfolios and reports.
- benefit from industry insight through our guest speaker lecture series.
- have the chance to work on live projects set by employers.



**JOBS DIRECTLY RELATED TO HOSPITALITY, TOURISM AND AVIATION OPERATIONS QUALIFICATIONS INCLUDE:**

- CHEF
- CATERING MANAGER
- COMMIS CHEF
- CHEF DE PARTIE
- EVENTS MANAGEMENT
- HOTEL MANAGER
- TRAVEL AGENCY MANAGER
- RESTAURANT MANAGER
- CABIN CREW
- PASSENGER SERVICES



HOSPITALITY AND TOURISM STUDENTS STUDY IN OUR LIFESTYLE ACADEMY.

## INDUSTRY SUPPORTERS:



National Trust



RAMSIDE HALL HOTEL • GOLF • SPA  
★★★★

VISIT Northumberland

Newcastle International  
Your Airport



NORTHUMBRIAN WATER living water



North East Hotels Association

maldron HOTEL  
NEWCASTLE





## FdA CULINARY ARTS

DURATION: 2 YEARS

ENTRY REQUIREMENTS: 32-64 UCAS POINTS

UCAS CODE: N850

If you are an aspiring chef or looking to pursue a career in hospitality management or food development, this Culinary Arts degree will help you get there. Building on your existing cookery skills, you will develop advanced culinary knowledge and techniques, as well as the skills needed to market and manage a range of food businesses. You will explore gastronomy and innovation in food, the latest food trends and expand your understanding of issues including dietary requirements, menu planning and managing finances. This degree was developed with the support of local chefs including Norman Bradford and Kyle Greenwood and you will learn from tutors with experience working in Michelin Star environments.

## FdA AIRLINE AND AIRPORT MANAGEMENT

DURATION: 2 YEARS

ENTRY REQUIREMENTS: 64 UCAS POINTS

UCAS CODE: N853

Watch your career soar with an Airline and Airport Management degree. This degree is perfect if you have a passion for the aviation industry and are looking to work in an airport setting within management or at an operational level. You will study topics such as aviation safety and security, air transport operations and aviation regulations from tutors who have many years of experience of the industry, working at commercial and military airports and airlines including Virgin Atlantic, Jet2 and Air France. Through studying this degree, you will develop your professional skills such as communication, leadership and teamwork.

TAKE A LOOK  
AT OUR HOSPITALITY  
AND TOURISM  
DEGREES ONLINE

## FdA TOURISM AND EVENTS MANAGEMENT

DURATION: 2 YEARS

ENTRY REQUIREMENTS: 64 UCAS POINTS

UCAS CODE: N890

This Tourism and Events Management degree will help you to develop the knowledge and skills needed to succeed in the global tourism and events industry. You will learn about cultures, lifestyles and economies across the world and develop skills to navigate the industry within different countries. You will gain the practical management tools you need to manage and market a range of tourism and events businesses and benefit from close working links with local industry, including Hays Business Travel, NGI, ACAS and Northumbrian Water at Kielder. If you have a passion for people, enjoy experiencing different cultures and want to combine work and travel, this Tourism and Events Management degree is for you.



## BA (HONS) AIRLINE AND AIRPORT MANAGEMENT (TOP-UP)

DURATION: 1 YEAR

ENTRY REQUIREMENTS: FOUNDATION DEGREE OR EQUIVALENT IN A RELATED AREA

UCAS CODE: N855

Do you have a passion for the aviation industry? Are you looking to develop a career in leadership and management? If so, this Airline and Airport Management degree is the perfect way to elevate your future. Developed in collaboration with Swissport and Newcastle International Airport, this degree will help you build on the knowledge and professional skills you gained at Foundation Degree level. You will cover key topics such as sustainability within the aviation industry, crisis management and the principles of HR, as well as strategy and change management from tutors with extensive experience working in management positions within the industry.

## BA (HONS) TOURISM AND HOSPITALITY MANAGEMENT (TOP-UP)

DURATION: 1 YEAR

ENTRY REQUIREMENTS: FOUNDATION DEGREE OR EQUIVALENT IN A RELATED AREA

UCAS CODE: N891

This degree in Tourism and Hospitality Management will help you to develop your existing skills and knowledge of the industry and learn how to manage a business from a strategic and operational point of view. You will explore strategy, crisis management and people management before undertaking independent research, examining a topic of your choice within Tourism and Hospitality to complete a dissertation. You will also have the opportunity to gain a leadership and management qualification approved by the Chartered Management Institute (CMI), equipping you with the skills you need to manage teams of people and organisations.



## STUDENT PROFILE

### KIAN MARSHALL HOSPITALITY STUDENT

Studying at the University Centre has made me more confident in my ability and my vision as a chef. In the past, I would never have gone for a job if I thought there was a chance I wouldn't be able to do it, but now, I'm far more confident to put myself out there and apply for jobs that I really want and dream about getting. For me, the training and support I've received at Newcastle College University Centre has helped teach me to never hold myself back from going for my goals.



# MUSIC

**As a Music student at Newcastle College University Centre, you will be joining a creative community with a passion for developing and refining their talent.**

Our Music courses are hands-on, giving you that practical experience to set you apart from the rest. Our facilities will help you to build and establish your skills ready for an exciting career in industry.

During your studies you will have access to 10 recording studios, an in-house record label and our gig space, The Venue, as well as working in industry-standard facilities with industry-experienced tutors. There will also be guest lectures from some of the biggest names around.

## STUDY WITH US AND YOU WILL:

- have the opportunity to gain valuable work experience at our own in-house record label, PushPuzzle Records, in a variety of roles such as A&R, promotions and productions.
- be taught by industry-experienced tutors who know what it takes to succeed.
- benefit from guest speaker lectures to gain industry insight.
- be assessed in a variety of ways including portfolios, projects and reports.
- learn in smaller class sizes so you really get to know your classmates and tutors.

## JOBS DIRECTLY RELATED TO MUSIC QUALIFICATIONS INCLUDE:

MUSIC PRODUCER  
**MUSICIAN**  
 MUSIC TEACHER  
**SOUND DESIGNER**  
 SOUND ENGINEER  
**SESSION MUSICIAN**  
 FRONT OF HOUSE ENGINEER  
**MONITOR ENGINEER**



MUSIC STUDENTS STUDY IN OUR PERFORMANCE ACADEMY.

## INDUSTRY SUPPORTERS:





## FdA MUSIC AND SOUND PRODUCTION

DURATION: 2 YEARS

ENTRY REQUIREMENTS: 48-64 UCAS POINTS

UCAS CODE: W300

The FdA Music and Sound Production degree is for anyone who is serious about being a multi-skilled and highly-employable electronic music producer, live sound engineer or recording engineer. During this degree you will gain core skills in audio analysis and production, synthesisers, samplers, events planning and promotions, an understanding of the music industry and the impact of music within society. There are also two specialist pathways through the programme, Electronic Music Production and Live Sound and Studio Recording. In addition to the core skills, Electronic Music Production students will gain skills and knowledge of electronic music production, remixing, DJ technology, modular synthesis and live electronic performance. Live Sound and Studio Recording students will gain additional skills in sound reinforcement, studio and venue maintenance, advanced audio production, rigging and advanced audio recording techniques. You will also join an exciting community of creatives, helping to take your skills to the next level.

## BMUS (HONS) POPULAR MUSIC PERFORMANCE

DURATION: 3 YEARS

ENTRY REQUIREMENTS: 48-64 UCAS POINTS

UCAS CODE: W340

Thinking about studying a music degree? Want to specialise in popular or modern music? This BMus (Hons) Popular Music Performance degree will help you develop as a live or studio performer, session musician, composer or songwriter. As a Popular Music Performance student you will gain a deep knowledge of music and will cover topics like studio performance and production, digital media and promotion. You'll join our vibrant, creative community where you will have the chance to collaborate with like-minded students to host gigs, develop your own music and produce videos and album artwork. Whether you want to record the next hit single, write score for film and TV or work as a pit-band musician, our innovative degree can help you on your way.



“

### STAFF PROFILE

**JONNY BURGESS**  
LECTURER

My favourite modules to teach are studio-based. My area of expertise is working with musicians in recording studios and helping them to develop their material. It's great to hear students come in with raw ideas and then see them develop over time.

TAKE A LOOK  
AT OUR MUSIC  
DEGREES ONLINE





# PERFORMING ARTS

**As a dancer, actor or musical theatre performer with a Performing Arts degree at Newcastle College University Centre, you will develop your skills for an exciting and successful career in industry.**

Our degrees are all about providing you with the practical skills necessary to thrive within your chosen industry. You will study in our state-of-the-art Performance Academy to hone your craft and learn from tutors who will bring their industry experience and in-depth knowledge of life on stage, in front of the camera and behind the scenes.

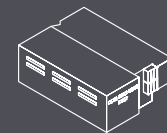
Our alumni have gone on to have fulfilling and successful careers as performers, choreographers, directors, writers, teachers and performing arts producers. You will be joining an array of artists, performers and stage managers who have tread the boards before you, showcasing the very best talent Newcastle College University Centre has to offer.

## STUDY WITH US AND YOU WILL:

- enjoy a range of workshops with organisations/ industry professionals such as Northern Stage, Alphabetti Theatre, Fertile Ground, Elliot Smith Dance and Mark Hedges, resident Director of The Phantom of the Opera.
- learn in smaller groups so you will really get the support you need from your course tutors and classmates.
- benefit from guest lectures and workshops with leading industry figures.
- study and create in our specialist facilities including a 200-seat theatre, TV studio, music venue, recording studios, production areas and dance studios with sprung floors.

## JOBS DIRECTLY RELATED TO PERFORMING ARTS QUALIFICATIONS INCLUDE:

ACTOR  
 CHOREOGRAPHER  
 DANCER  
 PERFORMER  
 MUSIC PRODUCER  
 LIGHTING DESIGNER  
 THEATRE DIRECTOR  
 THEATRE TECHNICIAN  
 TOURING MANAGER



PERFORMING ARTS STUDENTS STUDY IN OUR PERFORMANCE ACADEMY.

## INDUSTRY SUPPORTERS:

alphabetti  
T H E A T R E



N  
NORTHERN  
STAGE



## CertHE DANCE

**DURATION:** 1 YEAR  
**ENTRY REQUIREMENTS:** 64 UCAS POINTS  
**UCAS CODE:** W502

Put your best foot forward with this practical dance course, designed by professional dance practitioners. Develop the skills and knowledge required to become a performer, choreographer or teacher through technical training, creative workshops and performance. You will undertake continuous training in contemporary, ballet, jazz, urban and commercial techniques and be encouraged to explore a variety of dance processes and movement styles to become a versatile performer. You will experience working as a simulated dance company in creative and collaborative projects led by expert teachers, professional choreographers and external dance companies.

## CertHE MUSICAL THEATRE

**DURATION:** 1 YEAR  
**ENTRY REQUIREMENTS:** 64 UCAS POINTS  
**UCAS CODE:** W390

Prepare to enter the spotlight with this exciting and highly practical one-year Musical Theatre course. You will be trained to sing, dance and act as you build your talents by developing a broad range of skills in line with West End productions. At Newcastle College University Centre we offer comprehensive training classes in singing ensemble and solo performance, jazz and tap dance, along with choreography and staging musical theatre workshops to make sure you're just as comfortable taking centre stage as directing from offstage. Learn from our highly experienced tutors and their expansive professional networks to cultivate a range of skills as you are guided through audition techniques that will give you the edge in your future development portfolio to support your progression.

TAKE A  
 LOOK AT OUR  
 PERFORMING ARTS  
 DEGREES ONLINE

## FdA LIVE PERFORMANCE TECHNICAL PRODUCTION

**DURATION:** 2 YEARS  
**ENTRY REQUIREMENTS:** 64 UCAS POINTS  
**UCAS CODE:** W451

This Live Performance Technical Production Foundation Degree will help you develop the knowledge, skills and behaviours needed to become a Live Event Technician. This course has been informed by a team of industry experts to give you the unique opportunity to study on a course with a holistic approach to technician training. This degree covers systems and processes within live sound and lighting for live events, providing experience of theatre processes, the moving image and video conferencing. Throughout this degree you will refine your technical skills through work-based situations, studying in our dedicated music and theatre venues. You will learn how to do written investigations, presentations, observation witness statements and developing workplace documentation on policies and procedures in line with industry requirements.

## FdA MUSICAL THEATRE

**DURATION:** 2 YEARS  
**ENTRY REQUIREMENTS:** 64 UCAS POINTS  
**UCAS CODE:** W391

Be a part of the greatest show and combine dancing, singing and acting in this highly practical, industry-integrated Musical Theatre degree. Alongside theory and academic studies of musical theatre genres and industry processes, you will take part in intensive, performance-based classes, developing skills for the stage. Learning from highly experienced and well-connected tutors, you will experience a range of classes, workshops and audition techniques, enabling you to expand your solo repertoire. You will be given the opportunity to take on leading roles within our musical theatre productions and perform alongside our Level 6 students in their innovative musical theatre works, performed in a variety of regional theatre venues such as Boulevard.

## BA (HONS) ACTING FOR STAGE AND SCREEN

**DURATION:** 3 YEARS  
**ENTRY REQUIREMENTS:** 64 UCAS POINTS  
**UCAS CODE:** W410

Tread the boards and prepare for a career in theatre or on television by combining practical performance training with academic and creative study on our industry-integrated course. Whether you wish to perform, write or direct for stage or screen, this degree will help develop your knowledge and technique whilst developing industry contacts. With performances at venues both on and off campus and a range of workshops from professional actors, directors and agencies, you will experience diverse opportunities which will prepare you for industry. Working with a casting agent, you will create self-tapes, present yourself in auditions and gain work experience. During this degree you will benefit from strong links and opportunities with companies and venues such as Northern Stage, Alphabetti Theatre and Live Theatre.

## BA (HONS) DANCE

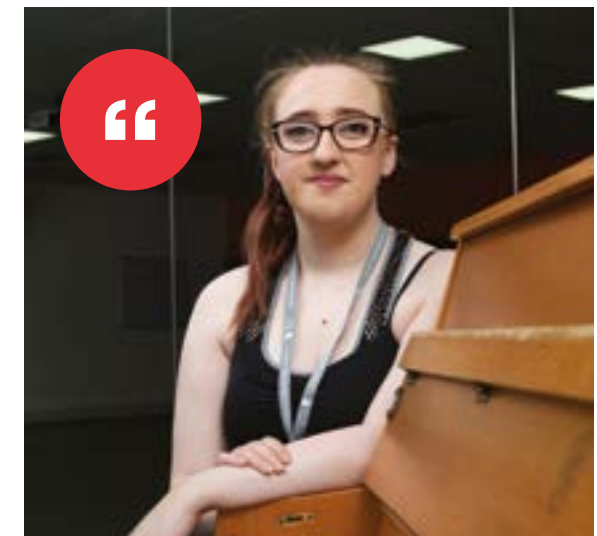
**DURATION:** 3 YEARS  
**ENTRY REQUIREMENTS:** 64 UCAS POINTS  
**UCAS CODE:** W500

Designed by professional dance practitioners with industry-integrated experience, this degree combines dance training and performance with creative workshops and academic study to help you develop the skills you need to become a versatile performer, choreographer or teacher. Based in our Performance Academy, a regional centre for dance and performance, you will explore a range of dance techniques and styles, with continuous training in contemporary, ballet, jazz and commercial techniques, undertaking industry-based workshops in urban dance, musical theatre preparation and aerial skills. Working in a simulated dance company, you will work with professional choreographers to create new and innovative dance works. Learning from course tutors with extensive dance experience and engaging with industry, you will grow your creative skills and leadership abilities to prepare you for a career in industry.

## BA (HONS) MUSICAL THEATRE (TOP-UP)

**DURATION:** 1 YEAR  
**ENTRY REQUIREMENTS:** FOUNDATION DEGREE OR EQUIVALENT IN A RELATED AREA  
**UCAS CODE:** W393

Put your career centre stage and advance your professional skills in acting, singing and dancing with this practical, industry-integrated Musical Theatre degree. You will become a member of 'The Company', our inter-dependent performance company, in which you will create, direct, choreograph and perform a new innovative musical theatre work for a regional venue such as Boulevard. Offering you hands-on experience and insight into every area of theatre work, this project will prepare you for a range of musical theatre careers. You will build on your existing musical theatre knowledge, audition techniques and solo repertoire, learning from expert industry professionals to develop your own performance skills and style ready for the industry.



### STUDENT PROFILE

#### ELLIE STURROCK PERFORMING ARTS STUDENT

The support I received from my tutors was brilliant, they always want us to succeed. They all really wanted me to do the best I could and, for me, the environment I have learned in and the people I learned with has made me enjoy my degree even more.



# RAIL AND CIVIL

**Our Rail and Civil Engineering Academy is renowned for delivering some of the UK's most in-depth training in the rail and civil engineering sectors.**

Whether you have a keen interest in the rail and civil industries or have a technical problem-solving mind, a degree from Newcastle College University Centre will provide you with an excellent foundation for a rewarding career in these vital sectors.

As a degree student, you will learn from industry-experienced tutors in our simulated Rail and Civil Engineering Academy. Our facilities feature an indoor and outdoor track, overhead lines, level crossings and signalling infrastructure as well as being equipped with a soils laboratory, surveying structure and electronics lab.

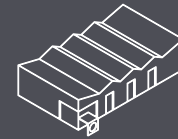
Our employer partnerships will help you to thrive. Our rail and civil degrees have been created alongside some of the biggest names in industry and provide you with the opportunity to experience and problem-solve real-life scenarios.

## STUDY WITH US AND YOU WILL:

- have the opportunity to undertake industry visits to enrich your studies.
- be taught by industry-experienced tutors who know what it takes to succeed.
- build valuable employer contacts through networking events.
- develop your skills in state-of-the-art facilities at the Rail and Civil Engineering Academy, providing you with industry-standard equipment and insight.

## JOBS DIRECTLY RELATED TO RAIL AND CIVIL QUALIFICATIONS INCLUDE:

CIVIL ENGINEER  
**RAIL TECHNICIAN**  
 RAILWAY MANAGER  
**TRACK MAINTENANCE**  
 TRANSPORT MANAGER  
**TRANSPORT PLANNER**  
 ENGINEERING TECHNICIAN



RAIL AND CIVIL STUDENTS STUDY AT OUR RAIL AND CIVIL ENGINEERING ACADEMY.

## INDUSTRY SUPPORTERS:





## HNC IN CIVIL ENGINEERING

**DURATION:** 1 YEAR  
**ENTRY REQUIREMENTS:** 64 UCAS POINTS  
**UCAS CODE:** H203

If you have an interest in how the world around us is designed, created and connected, this Civil Engineering course is perfect for you. Supported by CECA North East and Robertson Civil Engineering, you will focus on construction and civil engineering techniques, maths and structures, technical drawing and design and strategy management. You will be taught by civil engineers who are still active in industry and will broaden your understanding whilst developing your management and strategic thinking skills. You will have access to a soils lab, electronics lab, surveying equipment, total stations and a CAD suite to help develop your practical skills.

## FdEng RAIL ENGINEERING

**DURATION:** 2 YEARS  
**ENTRY REQUIREMENTS:** 64 UCAS POINTS  
**UCAS CODE:** H201

It is estimated that the rail industry will need 50,000 new workers by 2033. This Rail Engineering degree will equip you with multi-disciplinary rail engineering and management skills to help you enter the industry. The only degree of its kind in the North East, the course will enable you to develop knowledge and practical skills in track maintenance, overhead lines, electrification and signalling, coupled with management skills so you are able to pursue high-level roles within the rail industry. You will be taught by tutors who actively work within the rail industry and will be based at our dedicated Rail and Civil Engineering Academy, benefiting from links with Nexus, Network Rail and Ganymede.



### STAFF PROFILE

**DAN HEGARTY**  
 CURRICULUM LEADER

The courses have been written with the needs and wants of industry in mind. Our Rail and Civil degrees have been informed by industry leaders, ensuring our students are studying the most up-to-date and relevant modules. Furthermore, the support students receive both academically and personally is outstanding.

TAKE A  
 LOOK AT OUR  
 RAIL AND CIVIL  
 DEGREES ONLINE





# SPORT AND EXERCISE

**As a Sport and Exercise student, you understand what it means to harness the transformative power of sport and exercise, whether you are supporting local communities, coaching elite performance athletes or helping people discover their hidden strengths through exercise and rehabilitation.**

Sport and Exercise courses at Newcastle College University Centre are your opportunity to immerse yourself in sport and exercise and pursue your dream career, learning from leading sport and exercise professionals. During your studies you will have the unrivalled opportunity to learn alongside three of the UK's biggest clubs: Newcastle Eagles, Newcastle Falcons and Newcastle United Foundation. Our tutors are also top-class. Among their ranks include a professional sports performance analyst, a Premier League nutritionist, an international futsal player and a Northern Ireland Women's Football captain with over 50 caps.

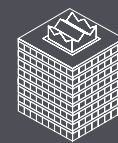
You will study in fantastic facilities, including those of our professional sports partners, alongside like-minded students, developing your skills and knowledge ready for a fulfilling career in the sport and exercise industry.

## STUDY WITH US AND YOU WILL:

- have the opportunity to undertake exciting work placements.
- be taught by industry-experienced tutors who know what it takes to succeed.
- really get to know your classmates through learning in smaller class sizes.
- have the chance to undertake additional qualifications such as first aid awards to enhance your employability.
- have the opportunity to gain relevant and rewarding work experience in countries such as Italy, Malta and South Africa.

## JOBS DIRECTLY RELATED TO SPORT AND EXERCISE QUALIFICATIONS INCLUDE:

PERSONAL TRAINER  
 SPORTS COACH  
 SPORTS THERAPIST  
 SPORTS ADMINISTRATOR  
 PE TEACHER  
 PHYSIOTHERAPIST  
 SPORTS NUTRITIONIST  
 STRENGTH AND CONDITIONING COACH  
 EXERCISE REHABILITATOR



SPORT AND EXERCISE STUDENTS STUDY AT THE NEWCASTLE EAGLES VERTU ARENA.

## INDUSTRY SUPPORTERS:





## FdSc PHYSICAL EDUCATION AND SPORTS COACHING



DURATION: 2 YEARS  
ENTRY REQUIREMENTS: 64 UCAS POINTS  
UCAS CODE: CX61

Do you have an interest in working with children and young people in a sport or education setting? We have worked closely with organisations such as North East SCITT, Newcastle United Foundation and The Percy Hedley Foundation to develop this Physical Education and Sports Coaching degree to ensure it gives you the experience of working in industry. You will study topics including the national curriculum, coaching and teaching styles, child development and SEN and gain event management experience as you plan and deliver a sporting event. You will develop valuable skills such as teamwork, leadership and organisation through planning coaching sessions.

## FdSc SPORTS PERFORMANCE CONDITIONING AND REHABILITATION

DURATION: 2 YEARS  
ENTRY REQUIREMENTS: 64 UCAS POINTS  
UCAS CODE: CB70

Do you have the drive and passion needed to work in the sports sector? Our FdSc Sports Performance Conditioning and Rehabilitation course could be the ideal degree for you. During this degree you will study a range of subjects including an in-depth introduction to the fundamentals of performance conditioning and injury rehabilitation, and an exploration of some core components of sports science such as anatomy and physiology. You will benefit from learning in fantastic facilities, including a biomechanics lab, conditioning suite, sports hall and therapy clinic and learn from staff with a wealth of experience working within amateur and professional sports. You will also benefit from current industry expertise through guest speakers and lectures.

## BSc (HONS) APPLIED PHYSICAL EDUCATION AND SPORTS COACHING (TOP-UP)

DURATION: 1 YEAR  
ENTRY REQUIREMENTS: FOUNDATION DEGREE OR EQUIVALENT IN A RELEVANT AREA  
UCAS CODE: 7F3M

As a student on the BSc (Hons) Applied Physical Education and Sports Coaching (Top-Up) degree you will become an effective team player, grow your passion for physical education and sports coaching as well as being committed to improving the health and fitness of young people. This degree has been developed in response to recommendations from industry partners in the sector, such as Newcastle United Foundation, to ensure you study a degree that is relevant to industry and what it needs. Within this degree, you will gain higher-level knowledge and cover topics including the psychology of sport and concepts of teaching and learning.



### STAFF PROFILE

**GARY HALL**  
LECTURER

I still work in the industry; it is important to me and my students that I am always up to date with current ways of working. I work together with my industry contacts and students to organise additional training, which complements their studies.



### STUDENT PROFILE

**LEWIS JAMES**  
SPORTS STUDENT

What I love most about my degree is the community spirit between my fellow students and peers, and the staff who teach, support and encourage us. I honestly can't speak highly enough of the staff in the Sport and Exercise department who've given me additional help and built up my confidence throughout my degree.

Every department here is full of people who are so passionate about what they do, be it teaching or learner support, but the dedication my own tutors have shown me in the last six years has been inspirational to me. The staff who've worked with me have without doubt been the driving force behind my degree and are a major reason why I've enjoyed it so much.

TAKE A  
LOOK AT OUR  
SPORT AND EXERCISE  
DEGREES ONLINE



**A Levels**

Qualification and grade	UCAS Tariff Points
*A Level grade A*	56
A Level grade A	48
A Level grade B	40
A Level grade C	32
A Level grade D	24
A Level grade E	16

**Pearson BTEC Subsidiary Diploma (QCF)**

Grade	UCAS Tariff Points
D*	56
D	48
M	32
P	16

**Pearson BTEC Level 3 Diploma (QCF)**

Grade	UCAS Tariff Points
D*D*	112
D*D	104
DD	96
DM	80
MM	64
MP	48
PP	32

**Pearson BTEC Extended Diploma (QCF)**

Grade	UCAS Tariff Points
D*D*D*	168
D*D*D	160
D*DD	152
DDD	144
DDM	128
DMM	112
MMM	96
MMP	80
MPP	64
PPP	48

**Pearson BTEC 90 Credit Diploma (QCF)**

Grade	UCAS Tariff Points
D*D*	84
D*D	78
DD	72
DM	60
MM	48
MP	36
PP	24

# ENTRY REQUIREMENTS

We believe in lifelong learning and are committed to encouraging and expanding widening participation opportunities at Newcastle College University Centre. Our entry requirements outlined below give an indication as to what may be required for your chosen course.

We consider A Levels, T-Levels, BTECs, International Baccalaureate, Scottish Advanced Highers, Access to Higher Education Diploma Courses (approved by the Quality Assurance Agency (QAA)), Diploma in Foundation Studies (Art and Design), NVQ Level 3 qualifications and Level 3 Advanced Apprenticeships. For specific entry requirements, please email [undergraduate@ncl-coll.ac.uk](mailto:undergraduate@ncl-coll.ac.uk)

We would also encourage applications from students studying a Foundation Degree, HND or Diploma in Higher Education at other institutions, or Level 4/5 of a Degree Apprenticeship, to apply for the third and final year of an Honours Degree OR a one-year Honours Degree (Top-Up). Overseas qualifications will also be considered and for specific entry requirements please email [undergraduate@ncl-coll.ac.uk](mailto:undergraduate@ncl-coll.ac.uk)

## UCAS TARIFF

We use the UCAS Tariff system to assess your qualifications in order to make the most appropriate offer on your application. In addition to tariff information, all qualifications are assessed on the basis of their suitability for your intended degree course. It is recommended that you check the individual UCAS Programme Profile for the most up-to-date information. For some courses it may be necessary to include a number of points from certain subjects within the overall tariff score.

## TYPICAL ENTRY REQUIREMENTS

Typical entry requirements are given for guidance only. Please view the individual Programme Profile at [www.ucas.com](http://www.ucas.com) for more detailed information.

**Certificate in Higher Education (CertHE)**  
48 UCAS Tariff Points.

**Foundation Degree**  
48 – 64 UCAS Tariff Points.

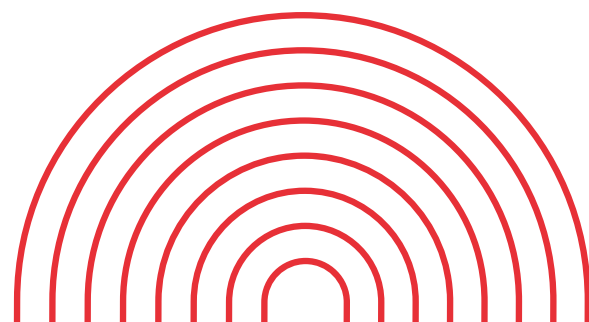
**Honours Degree**  
48 – 80 UCAS Tariff Points.

**Honours Degree (Top-Up)**  
Applicants are expected to achieve a pass or higher in a relevant Level 5 qualification.

## GCSE

We normally expect applicants to have achieved or be working towards grade 4 (C) in English Language and Mathematics at the time of enrolment. We will also accept Functional Skills Level 2 or Adult Numeracy and Literacy Certificates in place of GCSE English Language and GCSE Mathematics for some programmes.

Please note: certain professions, for example those within Childcare, Sport, Engineering and Teaching, require degree graduates to have achieved a minimum of grade C (4) in both GCSE English Language and GCSE Mathematics.





# WHAT ELSE DO WE OFFER?

Newcastle College offers hundreds of courses at a range of different levels so you are sure to find something to suit your career aspirations.

## PART-TIME UNDERGRADUATE STUDY

To find out more about our part-time degree offer visit [www.ncl-coll.ac.uk/part-time-degrees](http://www.ncl-coll.ac.uk/part-time-degrees) or call 0191 200 4000

## EMPLOYER TRAINING

We offer a comprehensive range of business solutions that enable your business to maximise the development of your workforce. Whether you are looking to recruit and train new staff, upskill existing employees or develop your senior managers, we have options that will suit your business. For further information visit [www.ncl-coll.ac.uk/employers](http://www.ncl-coll.ac.uk/employers) or call 0191 200 4757.

## ADVANCED AND HIGHER LEVEL APPRENTICESHIPS

Newcastle College offers a wide range of Apprenticeships covering many industries and sectors. Advanced Apprenticeships are Level 3 qualifications, which are equivalent to two A Levels and Higher Level Apprenticeships are a Level 4-5 qualification, equivalent to a Foundation Degree. To find out more visit [www.ncl-coll.ac.uk/advanced-apprenticeships](http://www.ncl-coll.ac.uk/advanced-apprenticeships)

## DEGREE APPRENTICESHIPS

A Degree Apprenticeship is a three-year work-based qualification that combines invaluable on-the-job work experience with studying for an Honours Degree. For more information email [apprenticeships@ncl-coll.ac.uk](mailto:apprenticeships@ncl-coll.ac.uk)

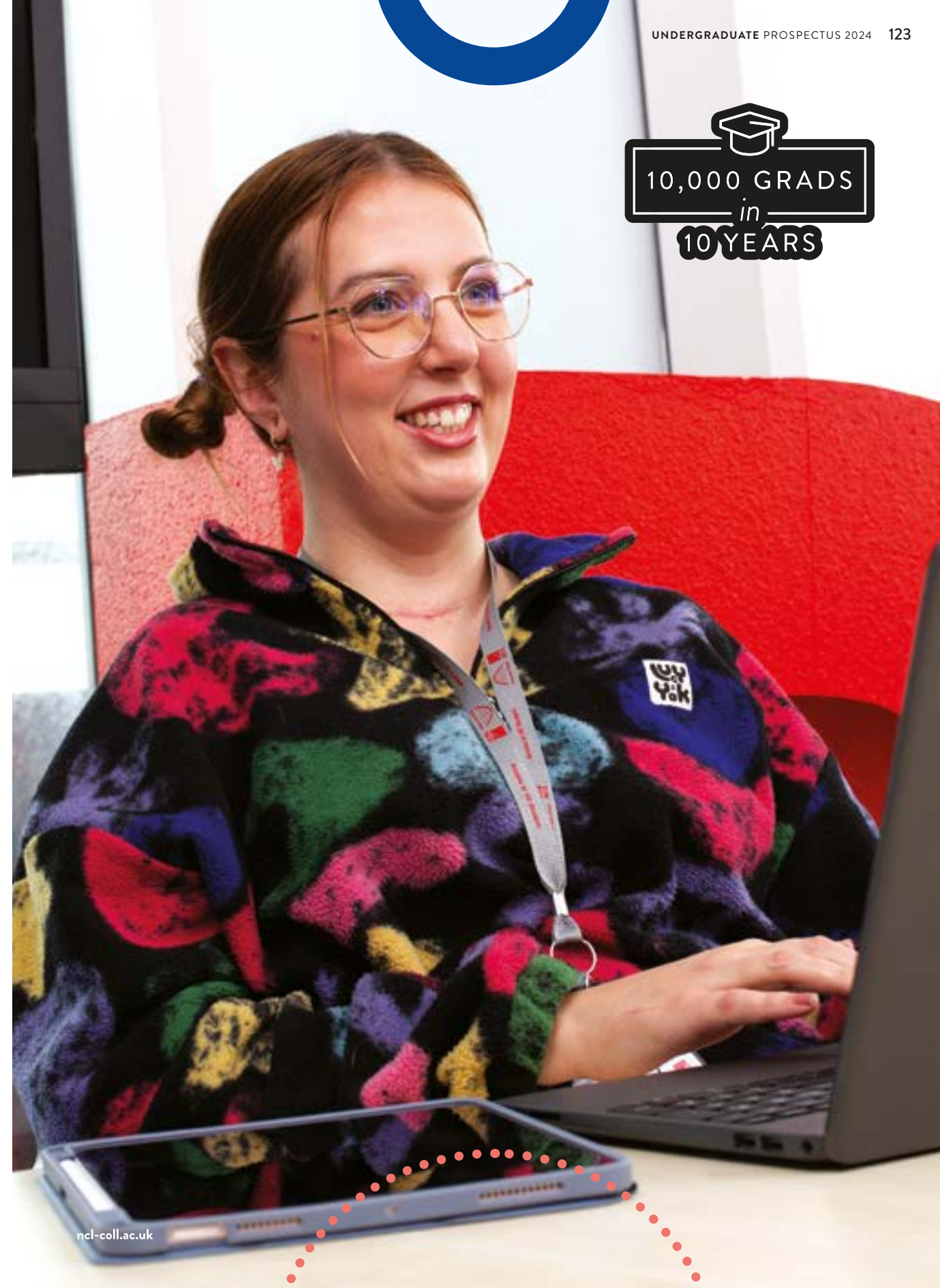
## SCHOOL LEAVERS

Newcastle College offers a wide full-time 16-18 provision. Our courses range from First Diplomas, National Diploma Qualifications, BTECs and National Vocational Qualifications (NVQs). The level you study depends on your GCSE results, however you are sure to find a course that matches your skills and interests. To find out what it's like to study at the College, as well as information on the courses, visit [www.ncl-coll.ac.uk/school-leavers](http://www.ncl-coll.ac.uk/school-leavers)

## POSTGRADUATE STUDY

Designed for graduates and/or experienced professionals and usually involve one or two years study, full-time or part-time. We offer postgraduate courses in Business, Childcare, Digital Arts, Education and Health and Social Care. For more information on our courses visit [www.ncl-coll.ac.uk/postgraduate](http://www.ncl-coll.ac.uk/postgraduate)

10,000 GRADS  
in  
10 YEARS





# CONTACT US

For details on any of our courses visit [ncl-coll.ac.uk](http://ncl-coll.ac.uk) where you can find information and download prospectuses. If you are unsure about which level to study at or would like advice about finding the right course for you, simply call our Student Services Team on **0191 200 4000** or email [enquiries@ncl-coll.ac.uk](mailto:enquiries@ncl-coll.ac.uk) and a member of the team will talk you through your options.

This guide and other course information is available in alternative formats and large print. Call **0191 200 4000**

## SAFEGUARDING

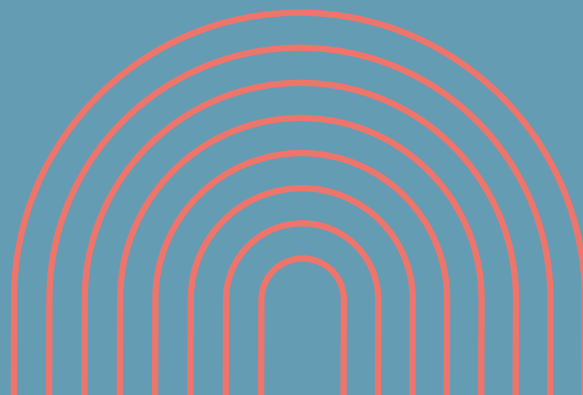
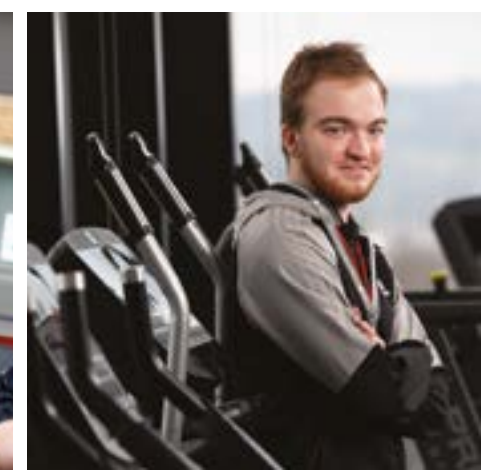
We are committed to safeguarding and ensuring all learners experience a secure, safe and welcoming environment in which they can fulfil their potential. Specific policies and procedures are in place to safeguard young people and vulnerable adults; these are robust and are reviewed regularly. Procedures are in place to take all reasonable measures to ensure risk is minimised and appropriate action is taken to address any welfare concerns. Newcastle College welcomes diversity in its student population – valuing differences in age, race, religion or belief, disability, sex, sexual orientation, gender reassignment, marriage and civil partnership and pregnancy and maternity.

## DISCLAIMER

Newcastle College University Centre will take all reasonable steps to provide the educational services and courses as described in this publication and in further documents. The contents of this publication relate to 2024 entry and are correct at the time of publishing (October 2023).

Any changes to our provision or services will be communicated to applicants at the earliest opportunity and updates will be made to our website ([www.ncl-coll.ac.uk](http://www.ncl-coll.ac.uk)) and our provision on UCAS ([ucas.com](http://ucas.com)).

There may be additional costs associated with your course such as field trips, equipment and printing. You can find out what's included in your Tuition Fee on our website and further information will be outlined by your tutor.





Newcastle College  
Rye Hill Campus  
Scotswood Road  
Newcastle upon Tyne  
NE4 7SA

0191 200 4000  
[enquiries@ncl-coll.ac.uk](mailto:enquiries@ncl-coll.ac.uk)  
[ncl-coll.ac.uk](http://ncl-coll.ac.uk)



*Responsibly sourced,  
please recycle*